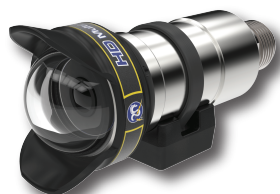


# Flexlink<sup>®</sup>

## System Overview

Apex<sup>™</sup> SeaCam<sup>® 1</sup>  
 HD Zoom SeaCam<sup>®</sup>  
 HD Multi SeaCam<sup>®</sup>



**Connector Options:**  
 SEACON MCBH8M-NET  
 SubConn DBH8M-NET  
 SubConn DLPBH  
 Teledyne Impulse MHDG NetG  
 AK Industries LP Ethernet

UTP Cable

**Interconnect Cable**  
**Qualified Options (Tested to 10 m):**  
 Falmat XtremeCAT FMXCAT50000  
 Falmat XtremeNET FM022208-05  
 SubConn D-P4TP24#/4C18#<sup>2</sup>

Wetside Female  
 Bulkhead Connector

MCB Enclosure

RJ-45

SFP Module

**Flexlink**  
**Media Converter**  
**Board (MCB)**  
 Apex SeaCam requires two MCBs

**Flexlink (MCB)**  
**with SFP Installed**



**SFP Available from DSPL**

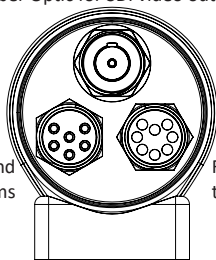
1 atm. rated CWDM, 0-5dBm Tx Power.  
 1270-1610 nm in 20 nm increments  
 excluding 1390 nm and 1410 nm.  
 SM LC connector.

1 atm. rated Coax, HD BNC connector  
 Refer to Flexlink Wiring Schematic for  
 connector pinouts and specifications.

MCB Enclosure Options

**DSPL Housing**

Fiber Optic for SDI video output



Power and  
 comms

Flexlink  
 to camera

**Your Housing**

A one atm.  
 environment with  
 suitable connections  
 for the Flexlink MCB.

<sup>1</sup>The Apex SeaCam uses two 3G-SDI signals to transmit video. This setup requires two Flexlink media converters and corresponding 3G-SDI data channels.

<sup>2</sup>Only available with SubConn.