

# Solenoid operated valves pilot operated poppet type

## 2-way normally closed

## Common cavity, Size 10

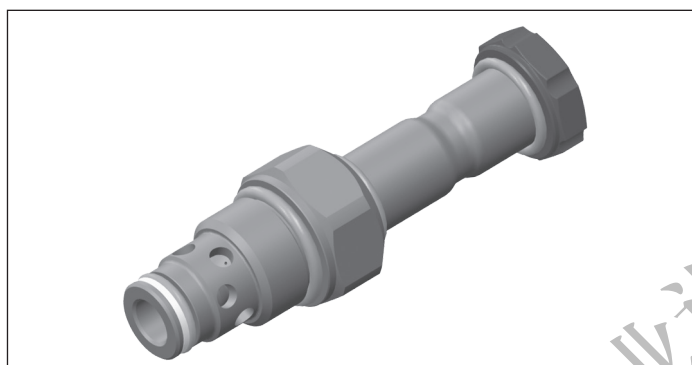
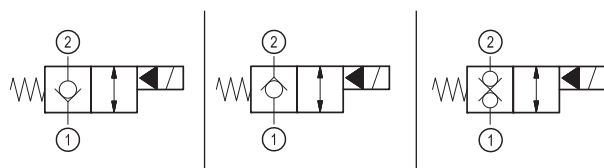
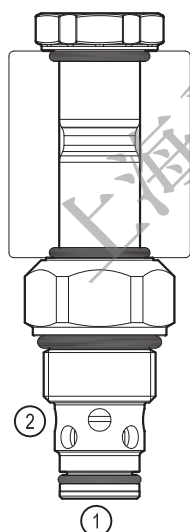
VEI-16-10A-NC

OD.15 - X - 36 - Y - Z

**RE 18323-32**

Edition: 11.2017

Replaces: 10.2017

**PATENT PENDING****Technical data**

New VEI-16 family incorporates a new solenoid concept providing excellent performance and enables cartridges to work in severe environment. Cartridges also incorporates advanced design of hydraulic parts providing excellent hydraulic performance.

**Technical data**

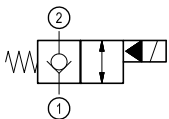
General	
Weight	0.25 kg (0.55 lbs)
Installation orientation	Unrestricted
Ambient temperature range	-30 to 90 °C (-22 to 194 °F)
Hydraulic	
Max. operating pressure	350 bar (5000 psi)
Flow range	2 - 70 l/min (0.53 - 18 gpm)
Fatigue cycle life	2 million cycles at 350 bar
Max. internal leakage:	20 drops/min.
Switching time	Opening ≤ 50 ms Closing ≤ 100 ms
Fluid temperature range	-20 to 80 °C (-4 to 176 °F)
Fluids: Mineral-based or synthetics with lubricating properties at viscosities of 20 to 380 mm <sup>2</sup> /s (cSt)	
Installation torque	44 - 56 Nm (33 - 41 ft-lbs)
Recommended degree of fluid contamination	Nominal value max. 10 µm (NAS 8) ISO 4406 19/17/14
MTTFd	150 years see RE 18350-51
Cavity	CA-10A-2N see 18325-70
Seal kit for X=05	code material no. RG10A2010520100 R901111363
Seal kit for X=03, 31	code material no. RG10A2010530100 R901111366
Seal kit coil and standard cap	code material no. RG02Z0010000100 R930067869
Seal kit coil and protective cap only for Y=D	code material no. RG03Z0010000100 R930067870
Other technical data	See data sheet 18350-50
Electrical	
Type of voltage	DC voltage
Coil type	D36
Supply voltage	See data sheet 18325-90
Voltage tolerance against ambient temperature	See characteristic curve
Power consumption	20 W
Type of protection	See data sheet 18325-90
Note: Coils must be ordered separately	

Ordering code

<b>OD.15</b>	<b>X</b>	<b>36</b>	<b>Y</b>	<b>Z</b>	<b>0000</b>	<b>*</b>
--------------	----------	-----------	----------	----------	-------------	----------

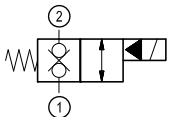
Solenoid operated valves  
pilot operated poppet type  
2-way normally closed

bidirectional type



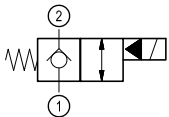
**05**

bidirectional type



**31**

bidirectional type



**03**

Series O/A to L  
unchanged performances and dimensions

0 = With buna seal  
8 = With buna seal and extra spring  
V = With Viton seal  
P = With buna seal and protective cap for override version **D**  
T = With Viton seal and protective cap for override version **D**

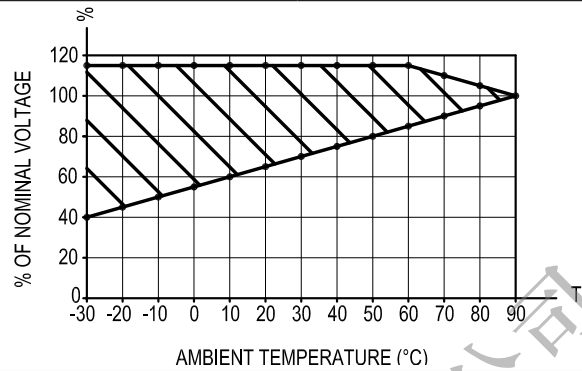
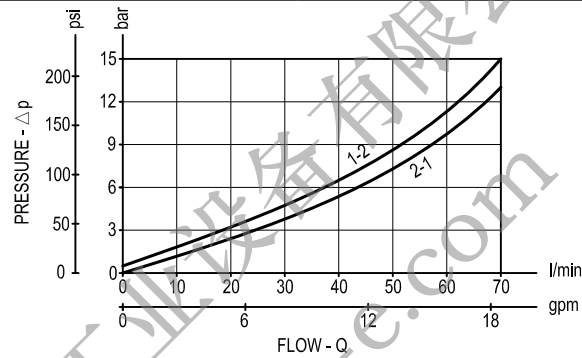
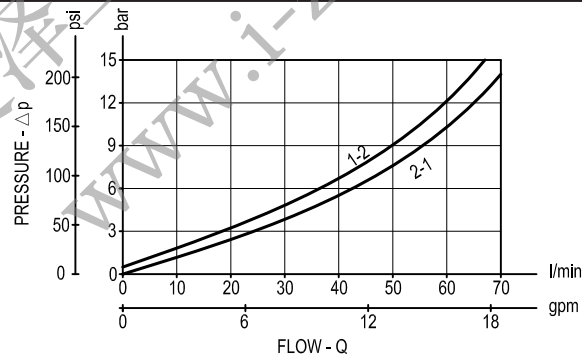
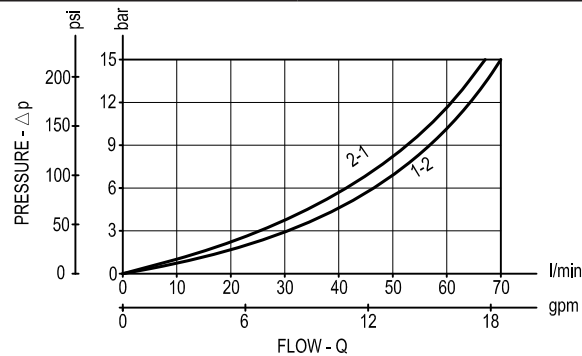
A = Standard  
D = Knob style manual override  
E = Pull style manual override  
F = Hand operated pull style manual override

Common cavity: CA-10A-2N

Preferred types

Type	Material number
OD150536A000000	R930063002
OD150536D000000	R930062969
OD150536E000000	R930062947
OD150536F000000	R930062967
OD150536DP00000	R930062946
OD153136A000000	R930065511
OD153136D000000	R930066658
OD150336A000000	R930065691

Type	Material number

**Characteristic curves****All Versions - Admissible supply voltage Vs. Ambient temperature at 100% duty cycle****Version 05****Version 31****Version 03**

Dimensions

Solenoid operated valves, poppet 2-way  
normally closed

