

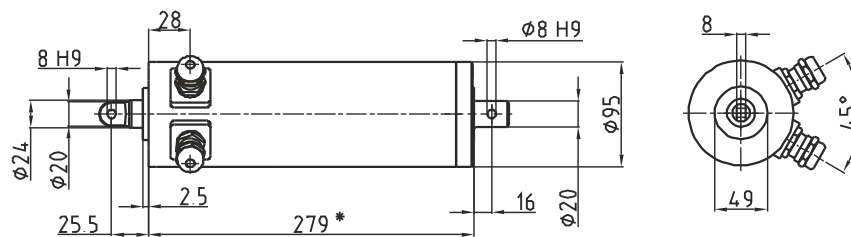
# Mini 1



### ***Dimensions of standard drive and fixing versions***

**[mm]**

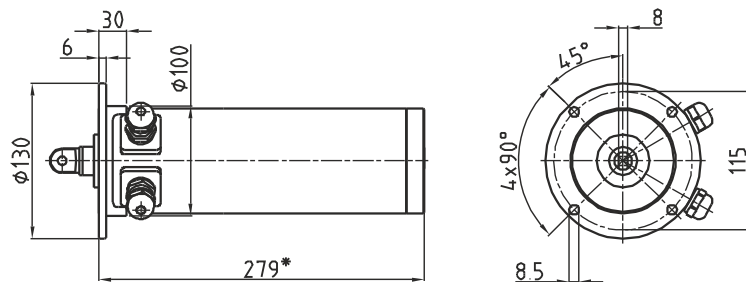
**Standard version: Three-phase/AC, stroke 150 mm, transmission 1-stage, fixing A**



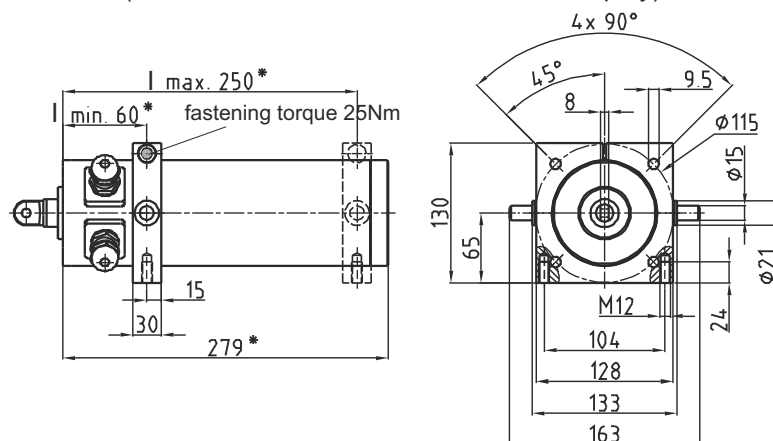
The \* marked dimensions specify the drive length of a standard drive (that means stroke length 150mm and transmission ratio 1-stage). For longer stroke length and/or different gear stages please add the corresponding dimensions **x** and **y** from the table below.

Gear	1:1	1-stage	2-stage	3-stage	<b>+</b>	Stroke length	150	200	250	300	350	400
<b>x</b>	0	0	20	40		<b>y</b>	0	50	100	150	200	250

## Fixing version C



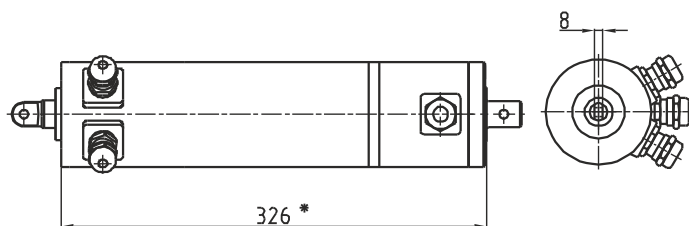
**Fixing version D, E, F** (Please define dimension I in order or inquiry)



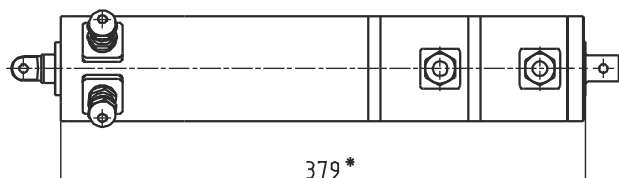
## Dimensions options

[mm]

Brake or  
Encoder or  
Potentiometer



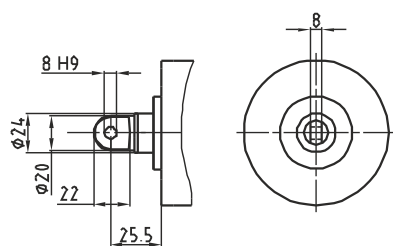
Brake and Encoder or  
Brake and Potentiometer



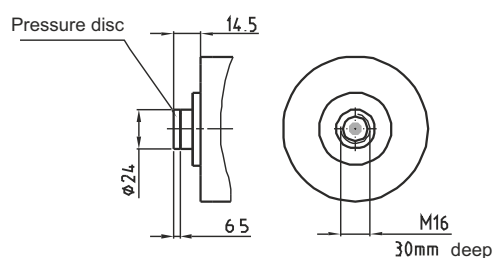
## Dimension connection heads

[mm]

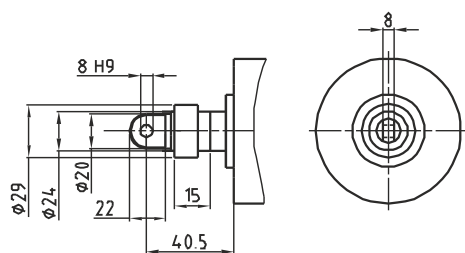
Standard connection head



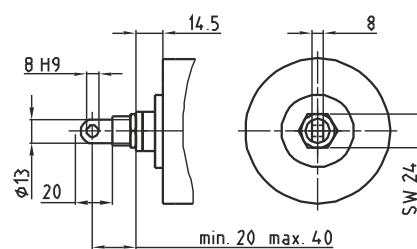
Without connection head



Adjustment ring



Adjustable connection head



## Power tables

### AC 3 x 230 / 400 V - 50 Hz

Motor speed min <sup>-1</sup>	Motor power kW	Duty cycle %	Planetary gear	Trapezoidal thread	Stroke speed mm/s	maximum stroke force [N] at stroke length [mm]			
						150	200	250 300	350 400
1360	0,18	15	1:1	12x6 So	136*	600	600	600	600
1360	0,18	15	1:1	12x3 Sd	68*	850	850	850	850
1360	0,18	15	1:1	12x2 Sd	45*	900	900	900	900
1360	0,18	15	1-st.	12x6 So	32*	2200	2200	1560	940
1360	0,18	15	1-st.	12x4 Ss	21*	2500	2500	2500	1640
1360	0,18	15	1-st.	12x3 Sd	16	2510	2510	1560	940
1360	0,18	15	1-st.	12x2 Sd	10,5	3300	3300	2740	1640
1360	0,11	40	2-st.	12x6 So	7	3500	3000	1560	940
1360	0,11	40	2-st.	12x4 Ss	5	3500	3500	2740	1640
1360	0,11	40	2-st.	12x2 Sd	2,5	3500	3500	2740	1640
1360	0,06	50-60	3-st.	12x4 Ss	1	3500	3500	2740	1640
1360	0,06	50-60	3-st.	12x2 Sd	0,5	3500	3500	2740	1640

### AC 1 x 230 V - 50 Hz

Motor speed min <sup>-1</sup>	Motor power kW	Duty cycle %	Planetary gear	Trapezoidal thread	Stroke speed mm/s	maximum stroke force [N] at stroke length [mm]			
						150	200	250 300	350 400
1360	0,14	15	1:1	12x6 So	136*	360	360	360	360
1360	0,14	15	1:1	12x3 Sd	68*	500	500	500	500
1360	0,14	15	1:1	12x2 Sd	45*	540	540	540	540
1360	0,14	15	1-st.	12x6 So	32*	1300	1300	1300	940
1360	0,14	15	1-st.	12x4 Ss	21*	1500	1500	1500	1500
1360	0,14	15	1-st.	12x3 Sd	16	1500	1500	1500	940
1360	0,14	15	1-st.	12x2 Sd	10,5	2300	2300	2300	1640
1360	0,11	15/40	2-st.	12x6 So	7	3500/2100	3000/1800	1560/940	940
1360	0,11	15/40	2-st.	12x4 Ss	5	3500/2100	3500/2100	2740/1640	1640
1360	0,11	15/40	2-st.	12x2 Sd	2,5	3500/2100	3500/2100	2740/1640	1640
1360	0,05	15/50-60	3-st.	12x4 Ss	1	3500/2100	3500/2100	2740/1640	1640
1360	0,05	15/50-60	3-st.	12x2 Sd	0,5	3500/2100	3500/2100	2740/1640	1640

So = no self-locking; Ss = static self-locking; Sd = dynamic self-locking

1-stage = 4,3:1

2-stage = 18,9:1

3-stage = 82,3:1

\* Starting at stroke speed of 20 mm/sec. a brake is requested.

Duty cycle applies to 10 min. duty time.

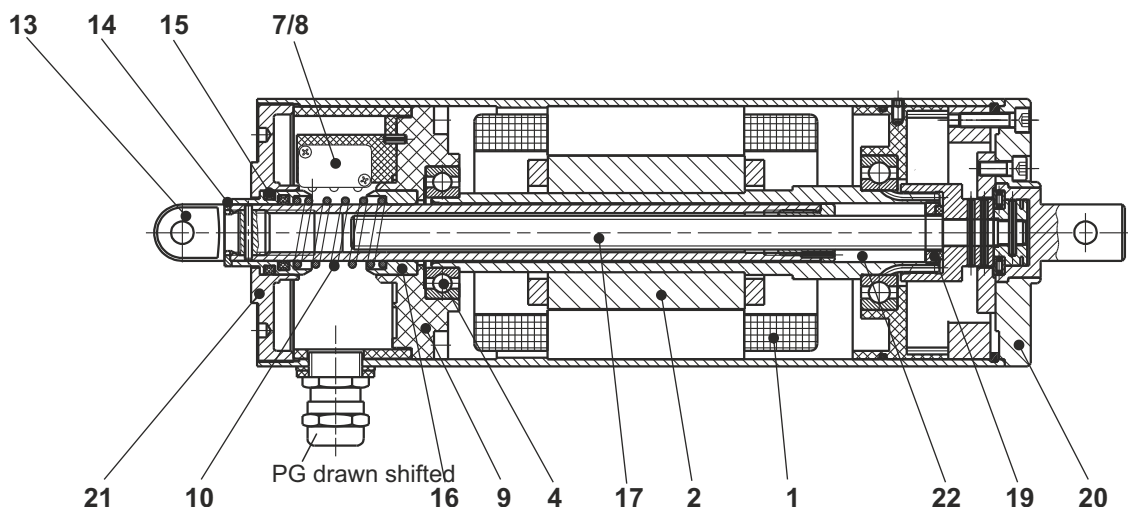
For tensile loading applies the maximum stroke force of the particular stroke speed.

Actuators with single phase motors reach only 60% of the force and motor power of those with 3-phase motors and 15 % stated duty cycle.

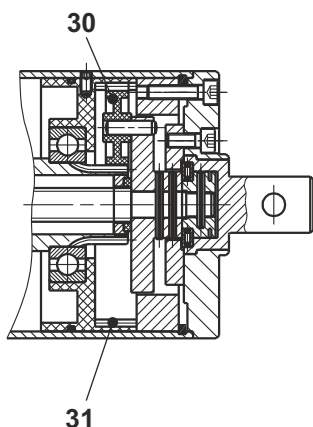
The force and motor power stated at 40% and 60% won't change if the actuator is operated at 15% duty cycle.

## Spare parts list

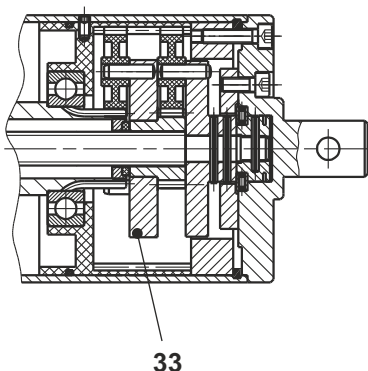
AC 3x230V / 110V, transmission ratio 1:1



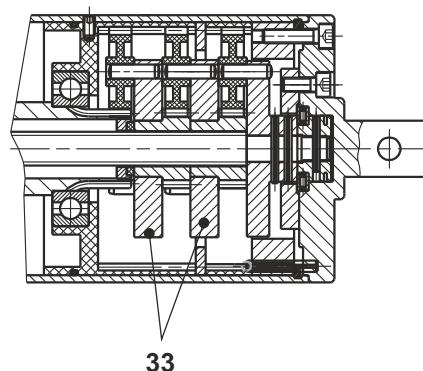
1-stage planetary gear



2-stage planetary gear



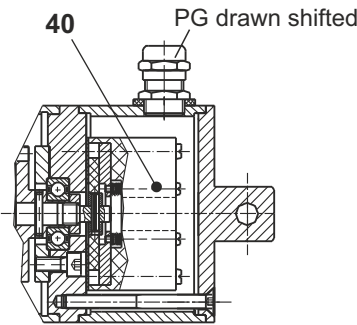
3-stage planetary gear



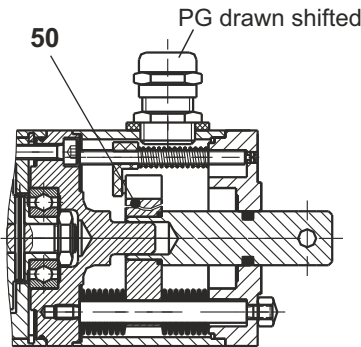
Item	Part name	Article-No.
1	Stator .....	Serial-No.
2	Rotor cpl.....	Serial-No.
4	Grooved ball bearing .....	00300100600583
7	Limit switch .....	02450100000600
8	Safety limit switch .....	02450100000250
9	Terminal board cpl.....	Serial-No.
10	Pressure spring .....	8-2010-01.12
13	Connection head .....	Serial-No.
14	Pressure disc .....	Serial-No.
15	Switch jack 1 with quadrings .....	8-2010-01.05N
16	Switch jack 2 .....	Z8-2010-01.06A
17	Spindle cpl.....	Serial-No.
19	Feltring .....	8-2010-01.13
20	Gear cover .....	Serial-No.
21	Bearing plate .....	8-2010-01.07N
22	Spindlenut, piston tube .....	Serial-No.
30	Planet wheel .....	8-2010-130.04
31	Internal ring gear cpl.....	Serial-No.
33	Planet wheel carrier toothed .....	Serial-No.

**Spare parts list**

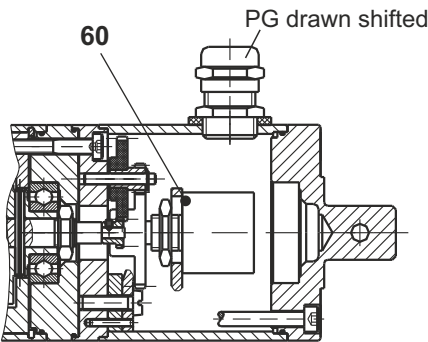
**Spring applied single disc brake**



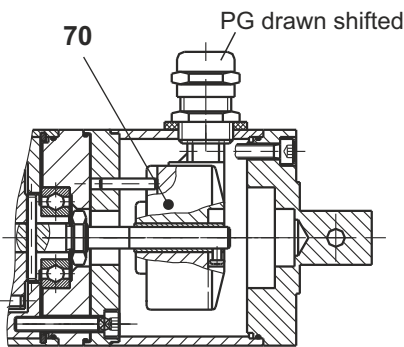
**Force dependent shut off**



**Potentiometer**



**Encoder**



Item	Part name	Article-No.
40	Spring applied single disc brake .....	Serial-Nr.
50	Force dependent shut off .....	Serial-Nr.
60	Potentiometer .....	Serial-Nr.
70	Encoder .....	Serial-Nr.