



SP120 SUPER PURITY PRESSURE SWITCH SERIES

Industry leading customers have depended upon the reliability and performance of the SP120 Series since 1989. This series features an all stainless steel sensor in addition to an all welded construction. The SP120 Series incorporates Wasco's proprietary manufacturing method which eliminates all leak paths.

This series is a perfect switch to handle corrosive media with high accuracy and tight tolerance.



SP120 SERIES HIGHLIGHTS

We've designed these switches for high purity applications such as semiconductor equipment. The SP120 Series does not contain any elastomer or an O-ring. All switches are helium leak tested to $\leq 1 \times 10^{-9}$ std cc/sec Helium per SEMI F1.

TYPICAL APPLICATIONS

- Gas Boxes
- Ozone Systems
- Gas Distribution Systems
- Semiconductor Equipment
- Medical Equipment

SP120 SERIES PERFORMANCE CHART

Sensor	Max. System Pressure* (PSIG)	Set Point Range* (PSIG)	Set Point Tolerance (PSI)	Reset Band (PSI)
3	30	1 - 30	± 0.7	0.7 - 2.3
5	125	3 - 125	± 2.0	1.3 - 3.8
8	250	8 - 250	± 5.0	2.0 - 10.0
15	500	18 - 500	± 10.0	5.0 - 21.0

* Other ranges available

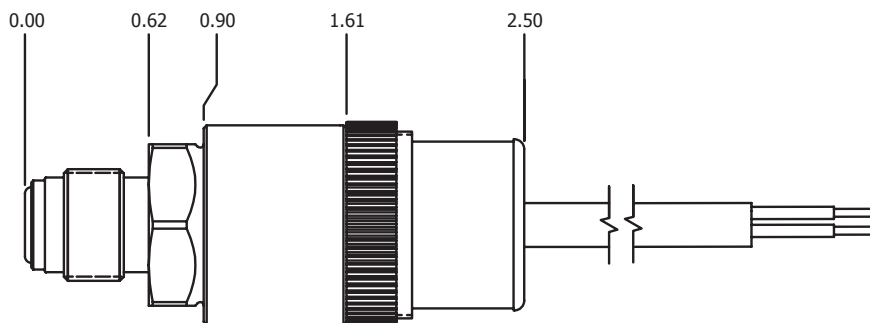
MATERIAL SPECS

	Wetted Components
Fitting	316L SS
Diaphragm	17-7PH SS

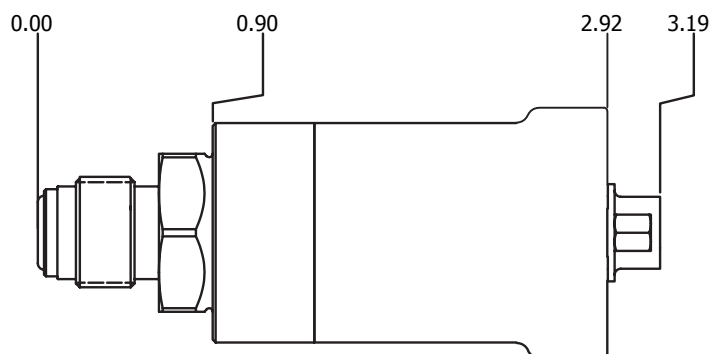
TECHNICAL SPECS

Life Cycle	≥1,000,000 cycles
Ingress Protection	IP65
Leak Rate	100% Helium Leak Tested to $\leq 1 \times 10^{-9}$ std cc/sec
Operating Temp	-65° to 225°F -54° to 107°C

SP120 DIMENSIONS



Typical SP120 with 1/4" male face seal and flying leads (other configurations available)



Typical SP120 with 1/4" male face seal and 9 pin enclosure (other configurations available)

We understand how difficult the specifying process is, but we believe it shouldn't be so confusing. Wasco has specified over 6000 unique pressure sensors for thousands of customers since 1963.