

HIGH POWER HPRING

HIGH POWERFUL RING - 12 LEDS

▷ LED RING LIGHT

▷ MACHINE VISION APPLICATIONS

▷ HIGH POWERFUL LED

▷ DIRECT LIGHTING

▷ QUALITY CONTROL WITH CAMERA

▷ SOLID BODY

POWERFUL DIRECTIVE LIGHTING, ADAPTED TO MOST CAMERAS.

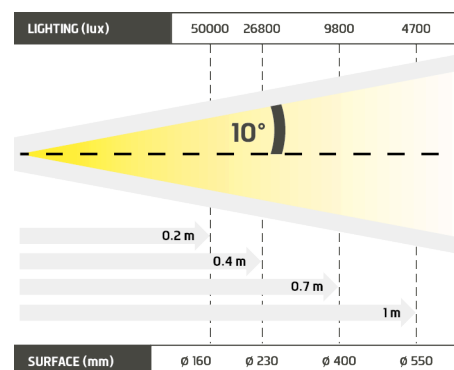


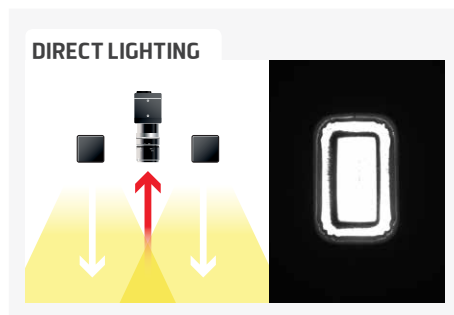
- ✓ 12 high powerful leds,
- ✓ continuous and strobe modes,
- ✓ fits the biggest cameras.

The HPRING is a solid ring, equipped with 12 high powerful leds, very useful for the directive lighting of a circular area. Among TPL Vision's products range, it definitely appears to be one of the most powerful lightings. At a distance of 1m, the standard version of the HPRING can light up a circular area of 550mm. Its large internal diameter make it compatible with the largest camera's objectives. The HPRING reveals all its potential in the field of robotics (for example, to locate the products during the packing process) and also in the field of quality control.

Distance	0.2m		0.4m		0.7m		1m	
HPRING	50000 lux	ø 160 mm	26800 lux	ø 230 mm	9800 lux	ø 400 mm	4700 lux	ø 550 mm

Minimum guaranteed values (white lighting measures)





TECHNICAL SPECIFICATIONS

Electronics	
Power supply	24 VDC $\pm 10\%$
Functioning mode	Continuous or strobe according to wiring
Maximum rising time	1.5ms
Maximum falling time	1ms
Wiring	M8 3 poles male connector
Max. Consumption	15 W
Optics	
Colour	White, Red, Green, Blue, Infrared (UV 405 available)
Number of Leds	12
Standard lens	$\pm 10^\circ$
Mechanics	
Dimensions	\varnothing Int : 58 mm - \varnothing Ext : 112 mm
Width	28 mm
Weight (g)	400
Materials	Black anodized aluminum
Diffuser	Transparent diffuser
Fixing	4 M3 screws
Environment	
Operating temperature	0 - 40°C
Storage temperature	0 - 60°C
IP protection	IP 40
Labels	RoHS-CE-WEEE

HOW TO BUILD YOUR REFERENCE

REQUIRED SETTINGS			OPTION	
HPRING	COLOUR	OPTIC ANGLE	DIFFUSER OPTION	IP OPTION
	WHI	7 $\pm 7^\circ$	DT TRANSPARENT	IP40 RATED
	630	10 $\pm 10^\circ$	DO OPAQUE	IP65 IP65 RATED
	525	17 $\pm 17^\circ$	DS SATIN	
	470	25 $\pm 25^\circ$	POL POLARISER*	
	850	NL NO LENS		

EXAMPLES :

HPRING WHITE LED $\pm 10^\circ$ OPAQUE DIFFUSER IP40 RATED:
HPRING RED LED $\pm 17^\circ$ TRANSPARENT DIFFUSER IP65 RATED:
HPRING BLUE LED $\pm 25^\circ$ POLARISER IP40 RATED:

RESULTS :

→ HPRING-WHI-10-DO
→ HPRING-630-17-DT-IP65
→ HPRING-470-25-POL

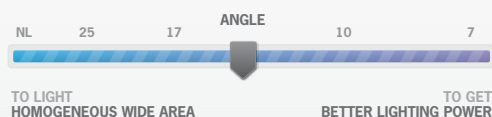
* EXCEPT FOR INFRARED 850

IT IS STRONGLY ADVISED TO USE THE HPRING IN **STROBE MODE** TO PROLONG THE LIFETIME OF THE MATERIAL.
POLARISERS ARE **NOT COVERED** BY WARRANTY.



INFORMATION ABOUT LENSES

NARROW ANGLE = GIVE PRIORITY TO LIGHTING POWER
WIDE ANGLE = GIVE PRIORITY TO HOMOGENEITY AND WIDE AREA



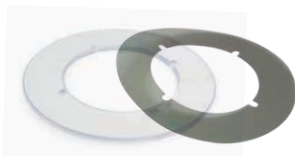
ACCESSORIES

M8 female – 3 pins cable



2 meters	Ref: C-M8-3P-2M
5 meters	Ref: C-M8-3P-5M
10 meters	Ref: C-M8-3P-10M

Diffusers & Polariser



Opaque diffuser	Ref: DO-HPRING
Satin diffuser	Ref: DS-HPRING
Transparent diffuser	Ref: DT-HPRING
Polariser	Ref: POL-HPRING

Safety glasses



Ref: EYE-PROTECT

MOUNTING DEVICES

LRMOUNT V1



Ref: LRMOUNT V1

LRMOUNT V2



Ref: LRMOUNT V2

LRMOUNT V3



Ref: LRMOUNT V3

LRMOUNT V4



Ref: LRMOUNT V4

LRMOUNT V5



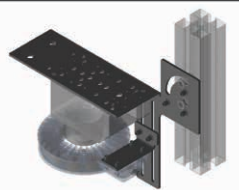
Ref: LRMOUNT V5

LRMOUNT V6



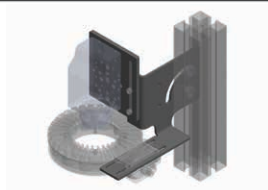
Ref: LRMOUNT V6

TPL-MOUNT-HPRING-H1



Ref: TPL-MOUNT-HPRING-H1

TPL-MOUNT-HPRING-V1



Ref: TPL-MOUNT-HPRING-V1

FOR CAMERA COMPATIBILITY, PLEASE VISIT OUR WEBSITE AT:
www.tpl-vision.com/product-category/accessories/