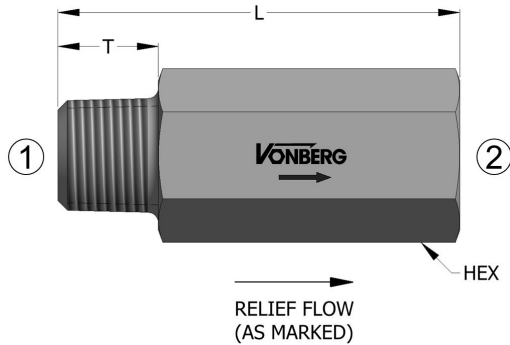
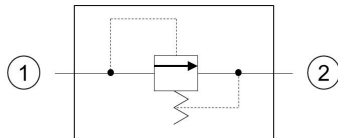


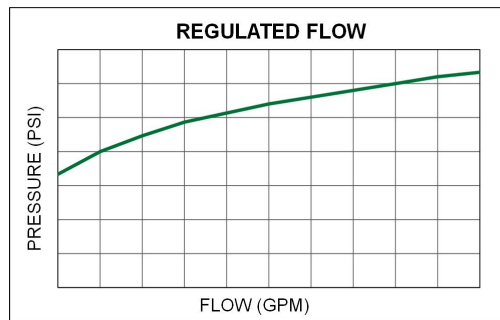
### PRODUCT



### SCHEMATIC



### TYPICAL PERFORMANCE



### DESCRIPTION

AN IN-LINE, DIRECT ACTING RELIEF VALVE THAT LIMITS MAXIMUM SYSTEM PRESSURE OR MAINTAINS A DESIRED PRESSURE WITHIN A CIRCUIT.

### OPERATION

- FLOW FROM (2) TO (1) IS ALWAYS BLOCKED.
- FLOW FROM (1) TO (2) IS BLOCKED UNTIL THE SPECIFIED RELIEF PRESSURE SETTING HAS BEEN EXCEEDED.

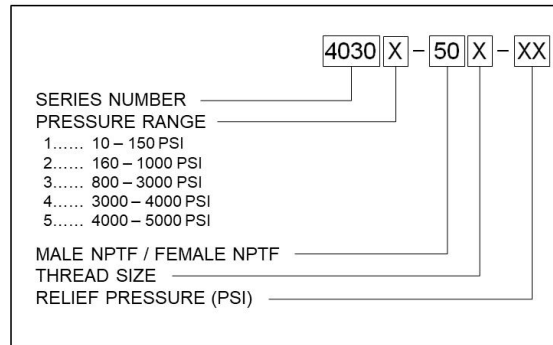
### FEATURES

- LOW INTERNAL LEAKAGE.
- CHROME STEEL BALL / HARDENED SEAT.
- STEEL COMPONENTS.

### SPECIFICATIONS

OPERATING PRESSURE	5000 PSI
RELIEF TOLERANCE	+/- 10%
TEMPERATURE RANGE	250°F TO -40°F

### ORDERING INFORMATION



MODEL	INLET 1	OUTLET 2	L	T	HEX
4030X-502	1/4-18 NPTF	1/4-18 NPTF PORT	3.70	0.563	0.750
4030X-503	3/8-18 NPTF	3/8-18 NPTF PORT	2.94	0.625	0.875
4030X-504	1/2-14 NPTF	1/2-14 NPTF PORT	3.50	0.750	1.125