

# Data sheet

N° :

Date : 17 juil. 2024

## Gearbox Compabloc Cb3032 8.59 S S B3 AP

Utilisation : Environment Common ; Ambiance Non corrosive ; Zone Non specific



Gearbox characteristics : Aluminium alloy housing ; Aluminium alloy endshield

### Motor definition

Gearbox input power (kW)      Gearbox input speed (min-1)

### Gearbox definition

Protection type	-	Fixing form	S
Gearbox series	Cb	Position of the fixation	-
Gearbox size	30	Operation position	B3
Capacity code	3	Low speed shaft	S
Number of stages code	2	Input interface	AP
Exact ratio	8.59	PreMounting	L

### Common definitions

Paint shade	RAL6000	Finish	-
Paint system	C3L (1 x acrylic polyurethane finish (50µm +/- 20%))		

### Gearbox mechanical interface

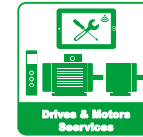
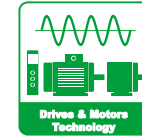
Dimension of gearbox output flange	-	Input type	AP
Diameter output shaft (mm)	20j6	Gearbox input flange	FF155
Lenght output shaft (mm)	40	Diameter gearbox input shaft	
Shaft material type	Steel shaft	Lenght gearbox input shaft (mm)	-
Nuance of shaft material	-	Diameter AP shaft (mm)	14j6
		Lenght AP shaft (mm)	30

### Gearbox options

Lubricant type	Mineral oil EP ISO VG 220	Back stop	-
Lubrication oil pump	-	Direction of rotation of Output shaft	-
Screw material	Steel screw	Silent block	-
Nameplate material	Aluminium nameplate		
Cooling system	-	External cooling required	-
ATEX data sheet	- -		

### Gearbox characteristics (on mains supply)

Exact output speed (min-1)		Index of reduction	9
Available torque on the output shaft (N.m)		Lubrication quantity (l)	0.6
K factor		Input thermic power (kW)	-
ReNum / ReDen	2680/312	Backlash (° dec.)	0.2500000
Ratio type	Undefined ratio	Gearbox mass (kg)	6.1

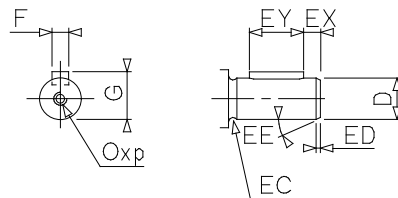
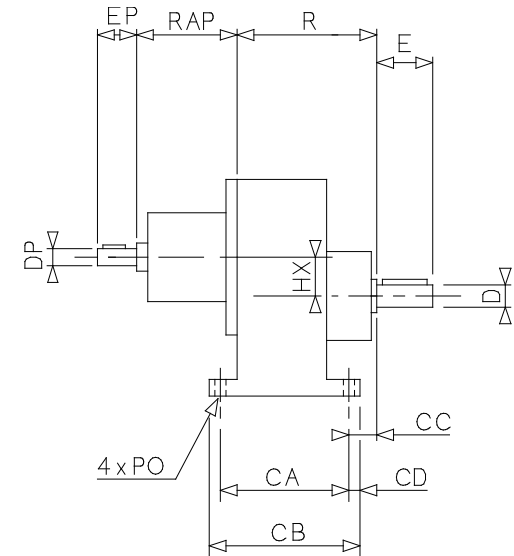
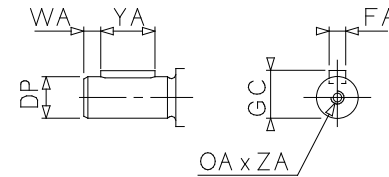
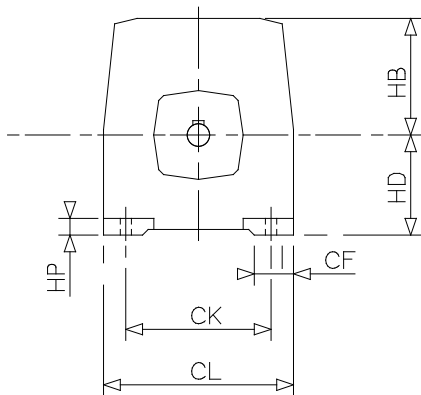


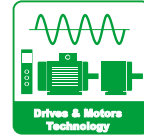
# Data sheet

N° :

Date : 17 juil. 2024

Gearbox Compabloc - Cb3032 8.59 S S B3 AP





# Data sheet

N° :

Date : 17 juil. 2024

## Gearbox Compabloc - Cb3032 8.59 S S B3 AP

### Gearbox (° & mm)

a	-	M1	-	ED	-
a1	-	M2	-	EE	-
a2	-	M3	-	EP	30
a3	-	n	-	EX	7
a4	-	N	-	EY	30
a5	-	O	M6	F	6
a6	-	OA	M5	FA	5
a7	-	Os	-	G	22.5
CA	105	p	16	GC	16
CB	125	P	-	GD	-
CC	22.0	PO	9	HB	78
CD	10	ps	-	HC	-
CE	-	PU	0.00	HD	75
CF	28	R	107.00	HF	-
CK	125	RAP	69	HP	13
CL	150	RC	-	HX	7
CL1	-	RR	-	LA	-
CM	62.5	RU	0.0	M	-
CN	150	S	-		
CO	-	S1	-		
CP	75	S4	-		
CQ	75	S8	-		
CX	-	T	-		
D	20j6	W1	-		
DP	14j6	WA	3		
E	40	YA	20		
EC	-	ZA	14		