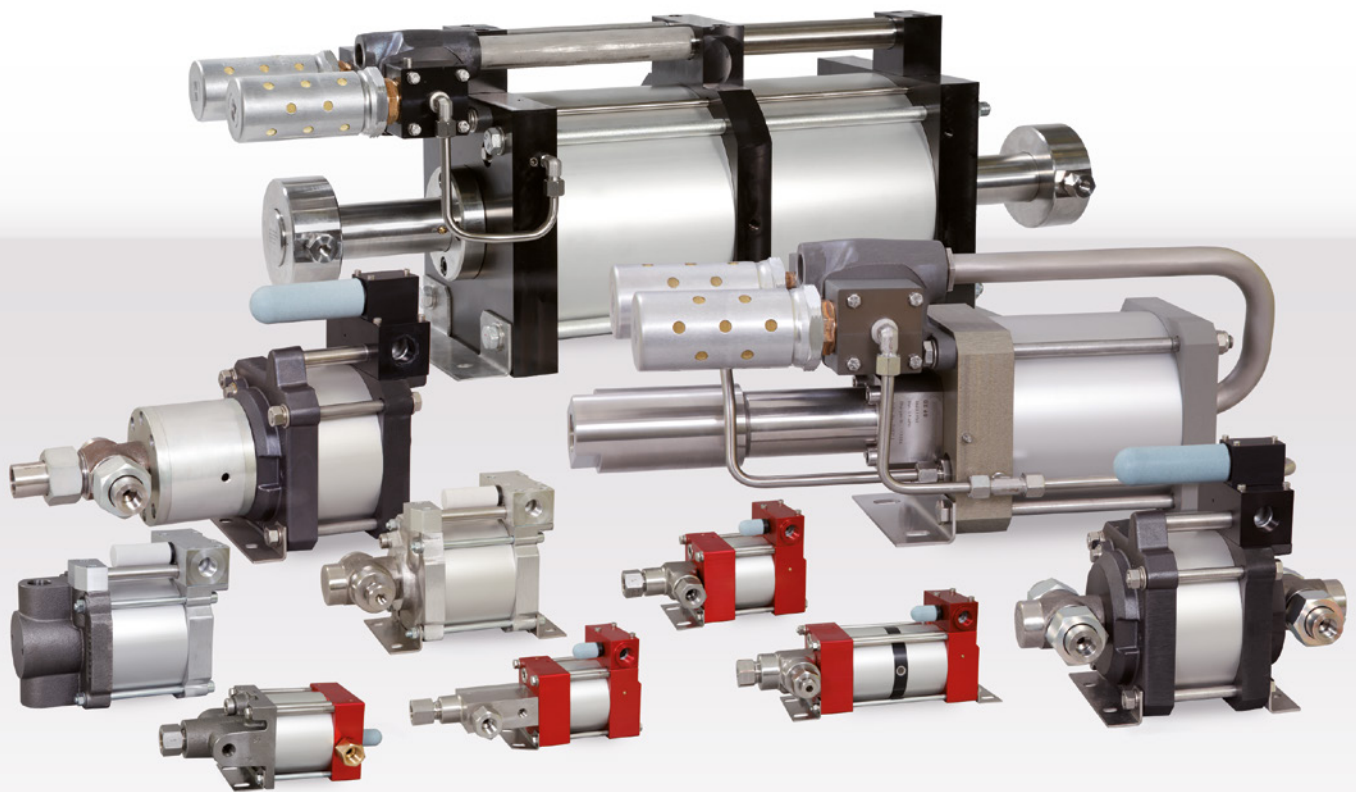


# **MAXIMATOR®**

## **Maximum Pressure.**



High Pressure Technology • Testing Equipment  
Hydraulics • Pneumatics



» Air driven high pressure pumps  
up to 7,000 bar (101,000 psi).

# Oil operation – S series up to 1,000 bar

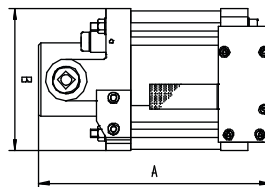
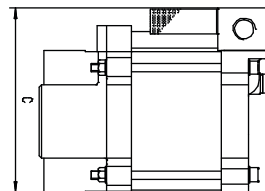
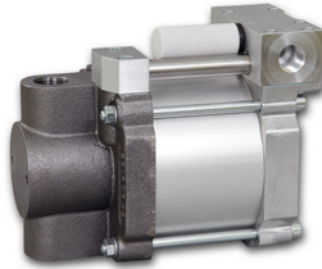
**Maximator pumps of the S series** are available in single- or double-acting design with one air drive piston. They are suitable for use in zone 1, category 2G/2D IIB TX explosion-proof areas (temperature class depending on medium temperature).

## S-Pumps

- » **Single-acting**
- » **With one air drive piston**
- » **Operating pressures of up to 1,000 bar (14,500 psi)**

The light and compact S pumps can be used with units for steady operation and in mobile applications. They already start at an air drive pressure of 1 bar (14.5 psi) and can be used for precision work.

- Material: Pump heads made of cast iron, pistons made of tool steel and seal made of polyurethane
- Only available with side inlet
- Maximum air drive pressure: 10 bar (145 psi)



## Options for S pumps

- Special connections, e.g. with NPT thread
- Order code: S35(D) - NPT**

Type	Pressure ratio*	Displ. Volume **		Outlet pressure ***		Flow capacity l/min ****	Connections			Dimensions in mm			Weight kg
		cm <sup>3</sup>	cu.inch	bar	psi		Air Drive L	Inlet A	Outlet B	A	B	C	
S15	1:17	28.3	1.73	170	2465	9.38	1/2 BSPP	3/4 BSPP	3/4 BSPP	221	135	175.5	9.1
S25	1:25	19.6	1.20	250	3625	6.72	1/2 BSPP	3/4 BSPP	3/4 BSPP	221	135	175.5	9.1
S35	1:39	12.6	0.77	390	5655	4.31	1/2 BSPP	3/4 BSPP	3/4 BSPP	221	135	175.5	9.1
S60	1:61	8.0	0.49	610	8845	2.75	1/2 BSPP	1/2 BSPP	3/8 BSPP	221	135	175.5	9.1
S100	1:108	4.5	0.27	1000	14500	1.55	1/2 BSPP	1/2 BSPP	3/8 BSPP	221	135	175.5	9.1
S150	1:156	3.1	0.19	1000	14500	1.08	1/2 BSPP	1/2 BSPP	3/8 BSPP	221	135	175.5	9.1

\* Ratio – driving surface air drive piston / driven surface high pressure piston (calculated)

\*\* Displacement volume per double stroke (calculated).

\*\*\* Static outlet pressure (calculated and maximum allowed)

\*\*\*\* Approximate flow at an air drive of 6 bar / 87 psi and an outlet pressure of 0 bar/psi.