

# Dual counterbalance

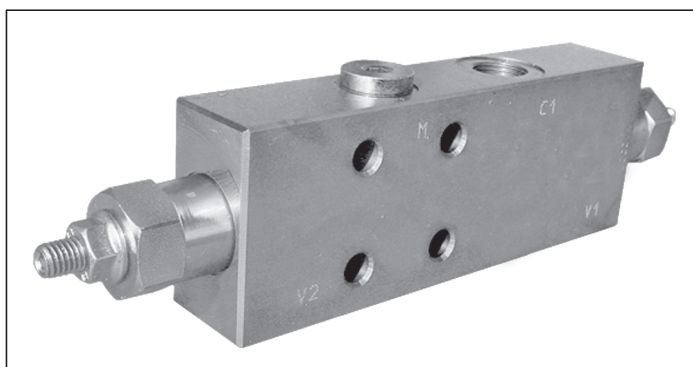
A-VBSO-DE-30-FC1

08.44.30 - X - Y - Z

**RE 18307-60**

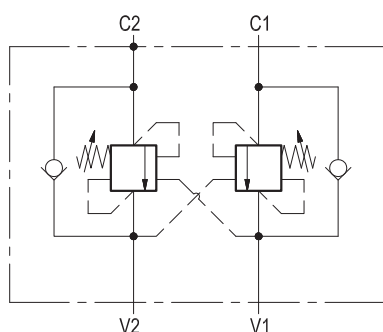
Edition: 02.2022

Replaces: 05.2017



## Description

It provides static and dynamic control of load by regulating the flow IN and OUT of the actuator, through ports C1 and C2. This valve module includes 2 sections, each one composed by a check and a relief valve pilot assisted by pressure in the opposite line: the check section allows free flow into the actuator, then holds the load against reverse movement; with pilot pressure applied at the line across, the pressure setting of the relief is reduced in proportion to the stated ratio until opening and allowing controlled reverse flow. Back-pressure at V1 or V2 is additive to the pressure setting in all functions. For better safety and compact assembly, the C2 port is gasket mounted directly on the actuator.



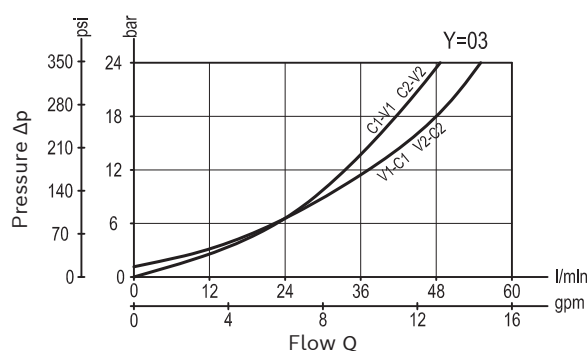
## Technical data

Max. operating pressure	410 bar (5945 psi)
Max. flow	60 l/min. (16 gpm)
Weight	see "Dimensions"
Manifold material	Zinc plated steel
Flange seal kit <sup>1)</sup>	E00000000000056 (R930060579)
Fluid	Mineral oil (HL, HLP) according DIN 51524
Fluid temperature range	-30 °C to 100 (-22 to 212 °F)
Viscosity range	5 to 800 mm <sup>2</sup> /s (cSt)
Recommended degree of fluid contamination	Class 19/17/14 according to ISO 4406
MTTFd	150 years see data sheet 18350-51
Other technical data	see data sheet 18350-50
Relief setting: at least 1.3 times the highest expected load.	

Note: for applications outside these parameters, please consult us.

<sup>1)</sup> Seals for 10 valves.

## Characteristic curve



08.44.30	X	Y	Z
----------	---	---	---

Pilot ratio

**03**      4.2 : 1

Port sizes	V1 - V2 - C1	C2	M
<b>02</b>	G 3/8	Ø 9 (0.35)	G 1/4
<b>03</b>	G 1/2	Ø 9 (0.35)	G 1/4

	SPRINGS		
	Adj. pressure range bar (psi)	Pres. increase bar/turn (psi/turn)	Std. setting Q=5 (l/min) bar (psi)
<b>20</b>	60-210 (870-3000)	63 (914)	200 (2900)
<b>35</b>	180-350 (2610-5000)	138 (2001)	350 (5000)

Pressure setting up to 410 bar: code on request.

Tamper resistant cap  
ordering code 11.04.23.002  
Mat. no. R930000752

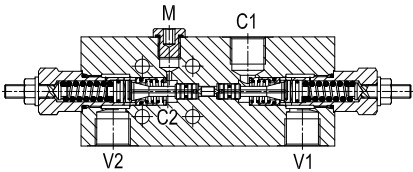
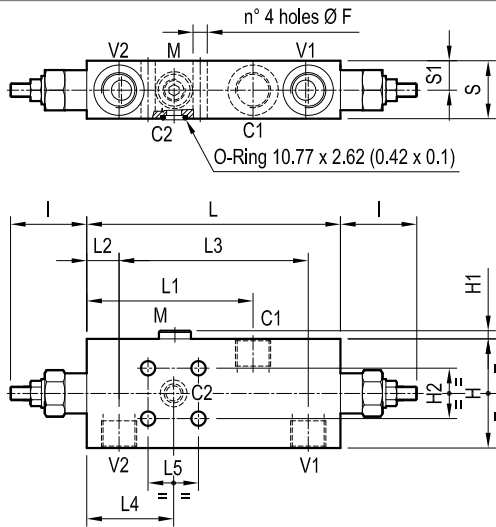


## Preferred types

Type	Material number
084430030220000	R930003428
08443003023500B	R930003429

Type	Material number
08443003033500A	R930003432

## Dimensions



17.5 (0.69)	34.6 (1.36)	30 (1.18)	51.7 (2.04)	112.6 (4.43)	19.2 (0.76)	99.3 (3.91)	151 (5.95)	45.5 (1.79)	30 (1.18)	5 (0.2)	65 (2.56)	8.5 (0.34)			G 1/2	2.2 (4.9)
14.8 (0.58)	29.5 (1.16)	30 (1.18)	51.7 (2.04)	109.6 (4.32)	20.7 (0.82)	99.3 (3.91)	151 (5.95)	45.5 (1.79)	30 (1.18)	5 (0.2)	55 (2.17)	8.5 (0.34)			G 3/8	1.7 (3.8)
S1	S	L5	L4	L3	L2	L1	L	I	H2	H1	H	F			Y	Weight kg (lbs)