

Specifications

For other materials or modifications, please consult TESCOM.

OPERATING PARAMETERS

Pressure rating per criteria of ANSI/ASME B31.3

Maximum Inlet Pressure

8000 psig / 552 bar

Outlet Pressure Ranges¹

1500, 3000, 5000, 6000, 8000 psig
103, 207, 345, 414, 552 bar

Design Proof Pressure

150% maximum rated

Leakage (maximum)

2 drops/min at 150 S.U.S at 2500 psig / 172 bar

Ambient Operating Fluid Media Temperature²

-40°F to 200°F / -40°C to 93°C

Flow Capacity

Main Valve: $C_v = 2.0$

Vent Valve: $C_v = 1.6$

MEDIA CONTACT MATERIALS

Body

303 or 316 Stainless Steel

Seat, Main Valve and Sensor

17-4 PH Stainless Steel

O-Rings

Nitrile, Buna-N, FKM (Viton®-A), FFKM, Perfluoroelastomer (Kalrez®), Ethylene Propylene

Back-up Rings

PTFE

Bonnet

303 Stainless Steel

Remaining Parts

303 Stainless Steel

OTHER

Cleaning

CGA 4.1 and ASTM G93

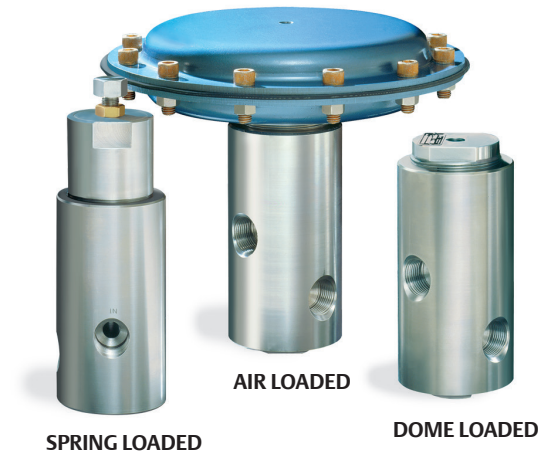
Weight (approximately)

15 lbs / 6.8 kg

Teflon®, Viton® and Kalrez® are registered trademarks of E.I. du Pont de Nemours and Company.

1. Regulator VENTS to 0 psig in all pressure ranges.

2. Varies with sealing material selected, please consult Tescom.



TESCOM 54-2200 Series pressure reducing regulator is designed for high flow and high pressure hydraulic applications. Inlet and outlet pressure is rated up to 8000 psig / 552 bar with $C_v = 2.0$ for flows up to 60 GPM / 127 LPM. Spring, air and dome loaded versions are available. Hardened Stainless Steel seat and poppet delivers excellent wear resistance.

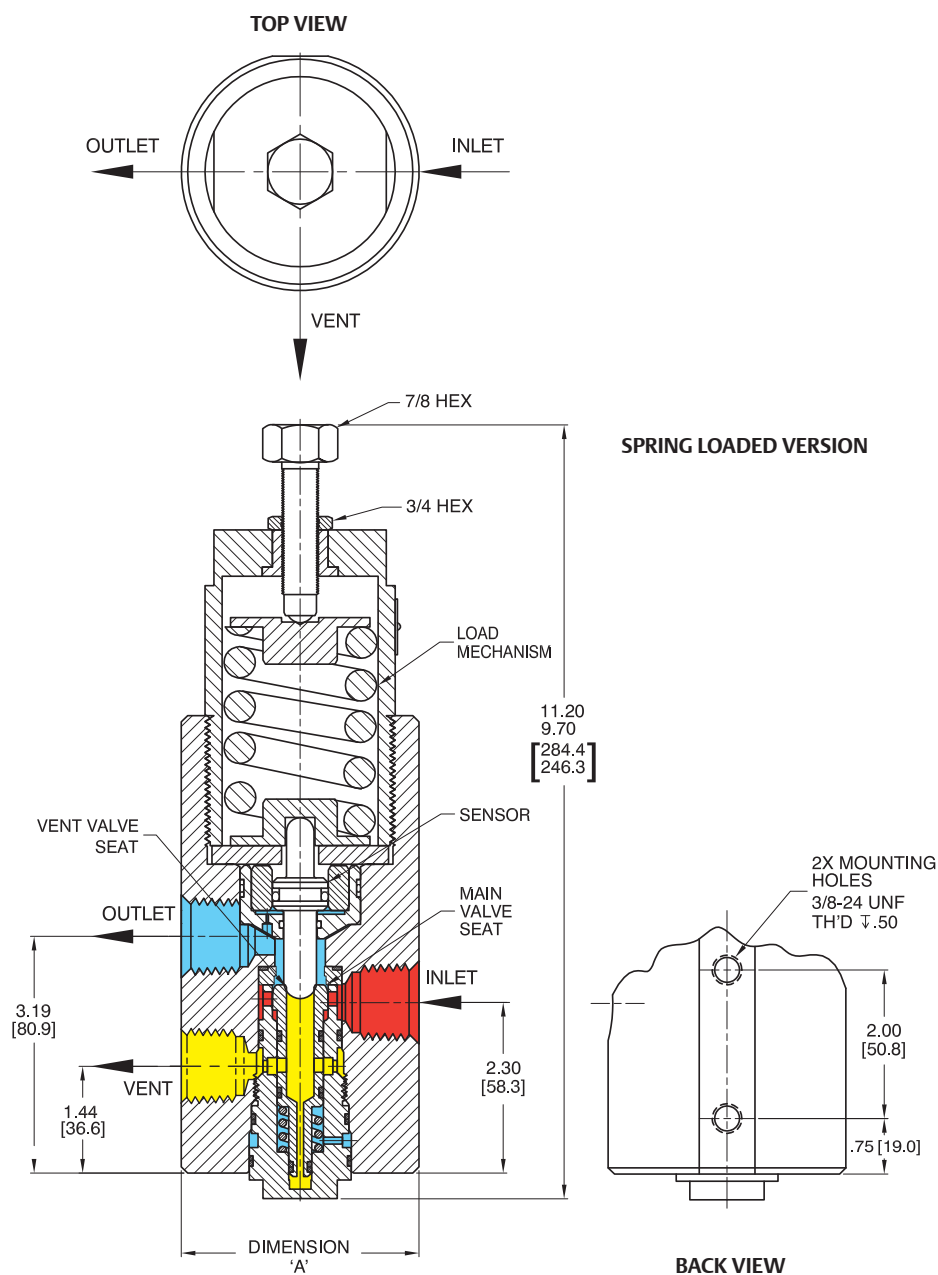
Applications

- Hydraulically operated blowout preventers (BOP)
- Hydraulic power units (HPUs)
- Hydraulic component testing

Features and Benefits

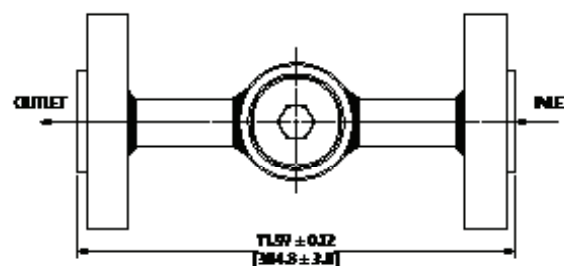
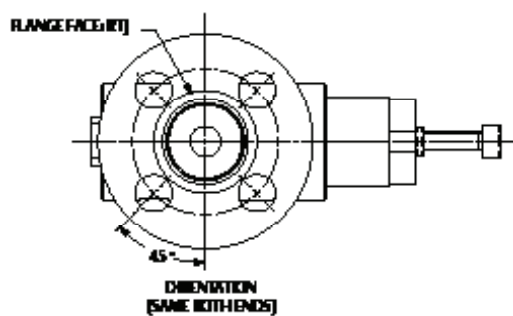
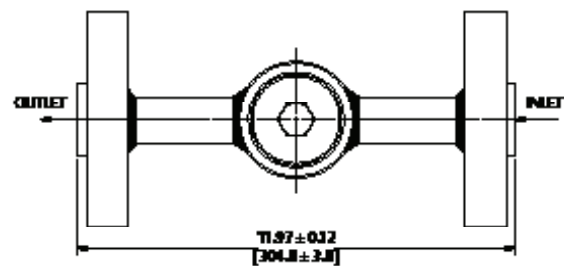
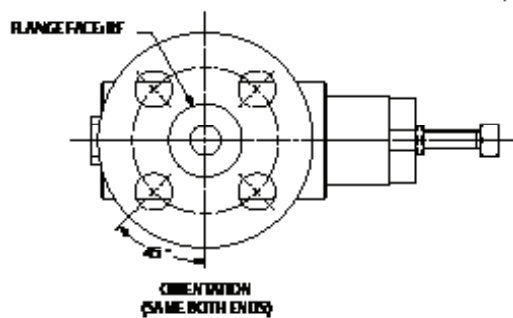
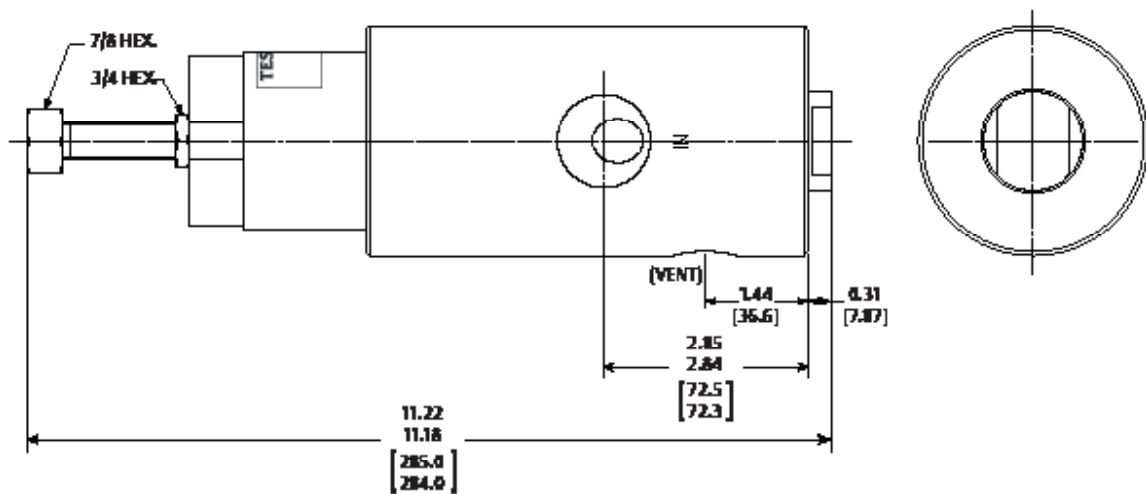
- Rugged design for tough conditions
- Pressure dampening orifice improves stability
- Features piston-style sensor, balanced main valve poppet and a non-adjustable manual vent system
- Hardened 17-4 Stainless Steel seats help provide long service in abrasive hydraulic applications
- Side mounting is standard
- Available in spring, hydraulic/dome and air loaded versions
- Compatible with TESCOM ER5000 Electropneumatic Controllers
- Flanged end connections available

54-2200 Series Regulator Drawing



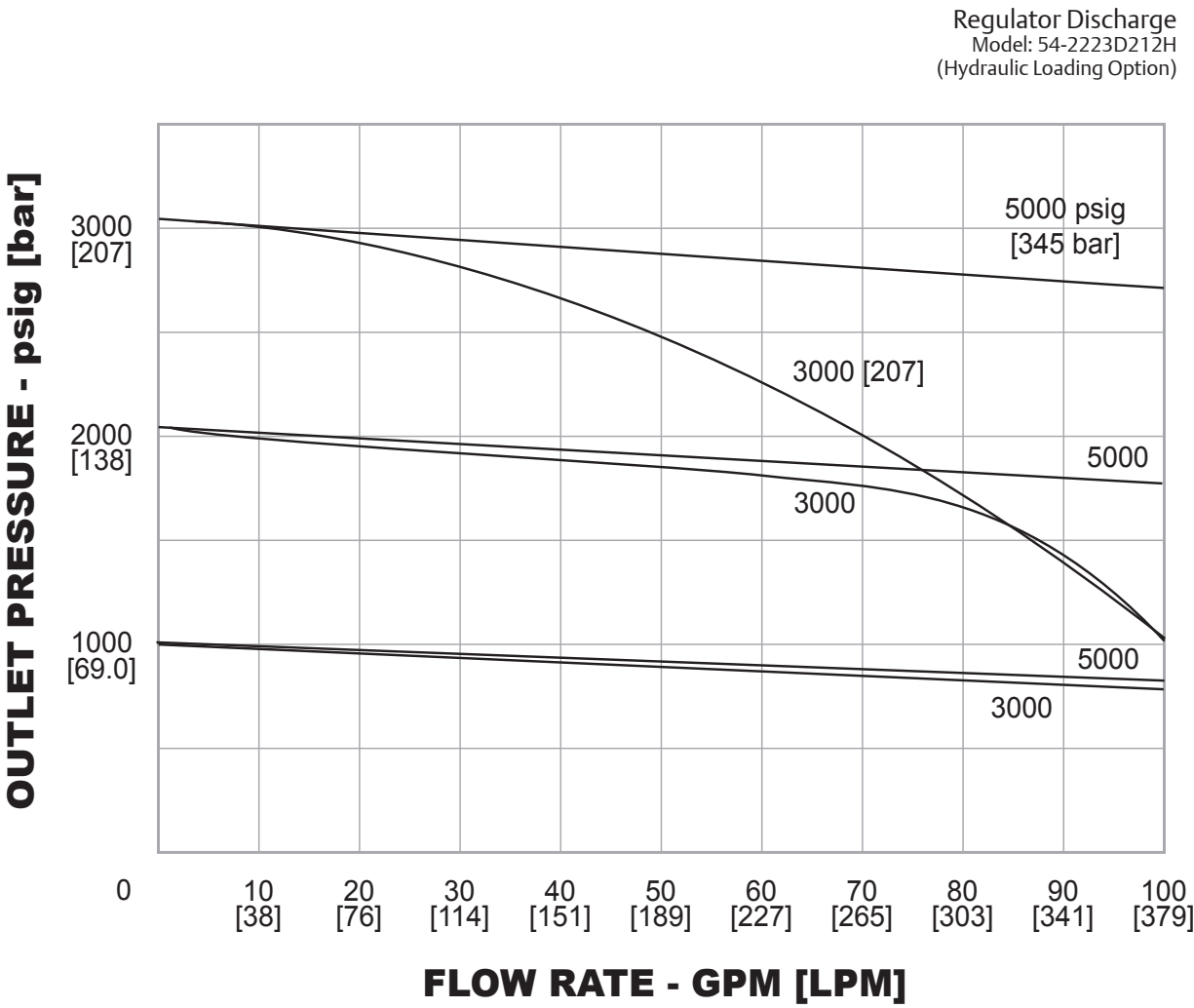
All dimensions are reference & nominal
Metric [millimeter] equivalents are in brackets

54-2200 Series Regulator with Flanges Drawing

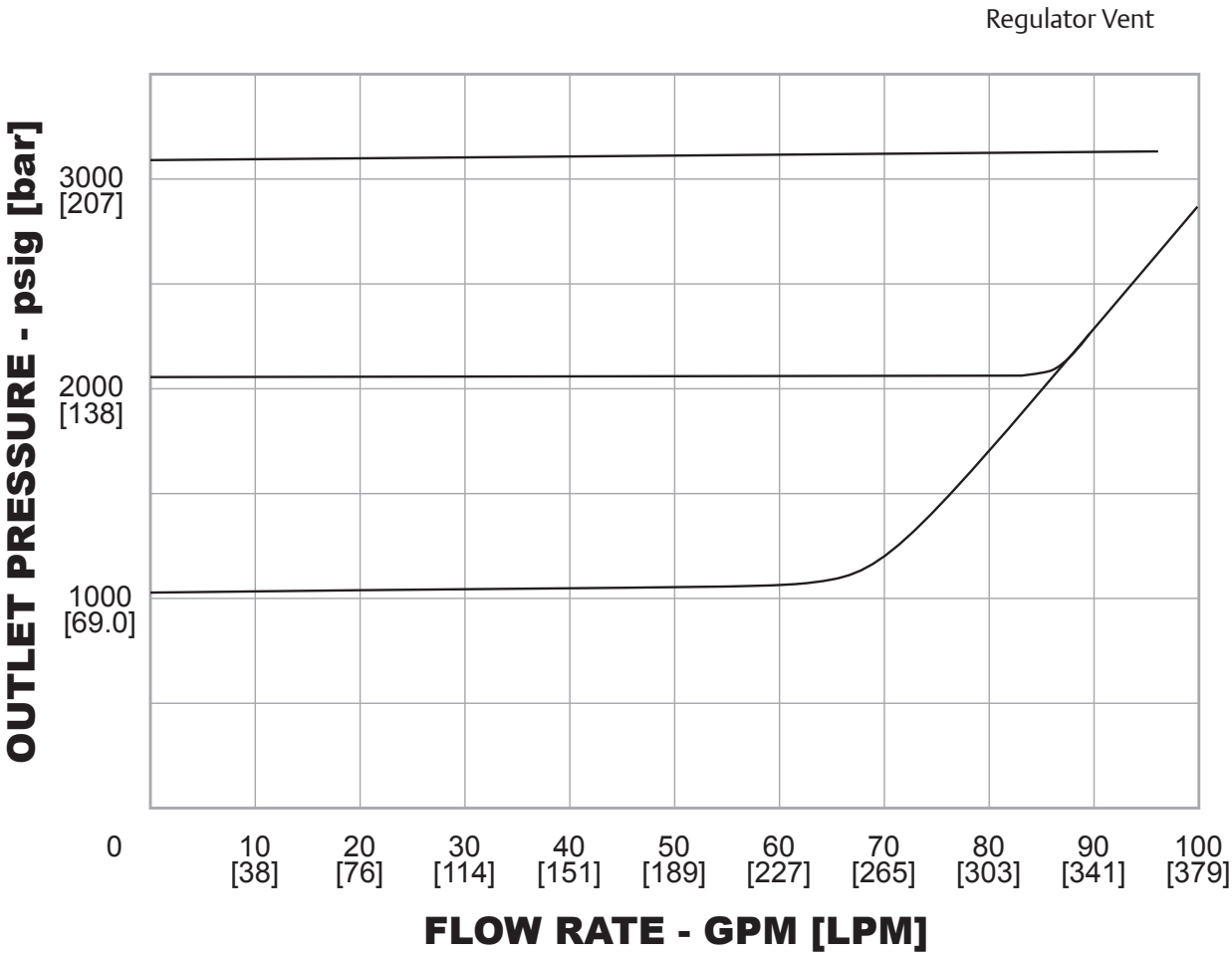


All dimensions are reference and nominal
Metric [millimeter] equivalents are in brackets

54-2200 Series Regulator Flow Charts



54-2200 Series Regulator Flow Charts



54-2200 SERIES

TESCOM Regulators - Pressure Reducing

54-2200 Series Regulator Part Number Selector



Learn more about common options.

For modifications, repair kits and accessories, contact factory.

Threaded End Connection Part Number Selection

54-22	2	3	D			2	12	S	
BASIC SERIES	BODY MATERIAL	OUTLET PRESSURE RANGES	SOFT GOODS MATERIAL			PORT TYPE	DI- MEN- SION "A"	PORT SIZE	LOADING OPTIONS
			O-RING						
			DYNAMIC	STATIC	SEAT				
54-22	2 – 303 Stainless Steel	1 – 1500 psig 103 bar	D – Nitrile, Buna-N	Nitrile, Buna-N	17-4 Stainless Steel	1 – SAE	3.95"	12 – 3/4"	S – Spring H – Hydraulic/ Dome A – Air
	6 – 316 Stainless Steel	(spring only)	T – FKM (Viton®-A)	FKM (Viton®-A)	17-4 Stainless Steel	2 – NPTF	3.20"		
		3 – 3000 psig 207 bar			17-4 Stainless Steel	3 – MS33649	3.95"		
		(35:1 air only)	V – FFKM, Perfluoroelastomer (Kalrez®)	FFKM, Perfluoroelastomer (Kalrez®)	17-4 Stainless Steel				
		3 – 3500 psig 241 bar	Z – Ethylene Propylene	Ethylene Propylene					
		(spring only)							
		5 – 5000 psig 345 bar							
		(spring and 65:1 air)							
		6 – 6000 psig 414 bar							
		(spring only)							
		8 – 8000 psig 552 bar							
		(hydraulic/ dome and 105:1 air)							

Flanged End Connector Part Number Selection:

54-22W	6	1	0	A					1	52	1
BASIC SERIES	BODY, PIPE & FLANGE MATERIAL	OUTLET PRESSURE psig / bar	VENT PORT	SOFT GOOD MATERIAL					FLANGE SIZE	FLANGE CLASS	FLANGE FACE
				Dash No.	O-Rings		Seat	Operating Temperature			
					Dynamic	Static					
54-22W	6 – 316 SST	0 – 0-1120 0-77 1 – 0-1500 0-103 3 – 0-3500 0-241 5 – 0-5000 0-345	0 – Non venting 1 – 1/2 NPT 2 – 3/4 NPT	A	PTFE	FKM	17-4 SST	0 to 165°F / -17 to 74°C	1 – 1/2" 3 – 1"	41 – 1 - 600# 52 – 1 - 900# / 1500# 63 – 1 - 2500#	1 – RF 2 – RTJ
				B	Nitrile, Buna-N	Nitrile, Buna-N	17-4 SST	-20 to 165°F / -29 to 74°C			
				C	FKM	FKM	17-4 SST	0 to 200°F / -17 to 93°C			
				D	EP	EP	17-4 SST	-20 to 200°F / -29 to 93°C			
				E	PTFE	EP	17-4 SST	-20 to 200°F / -29 to 93°C			