



CR

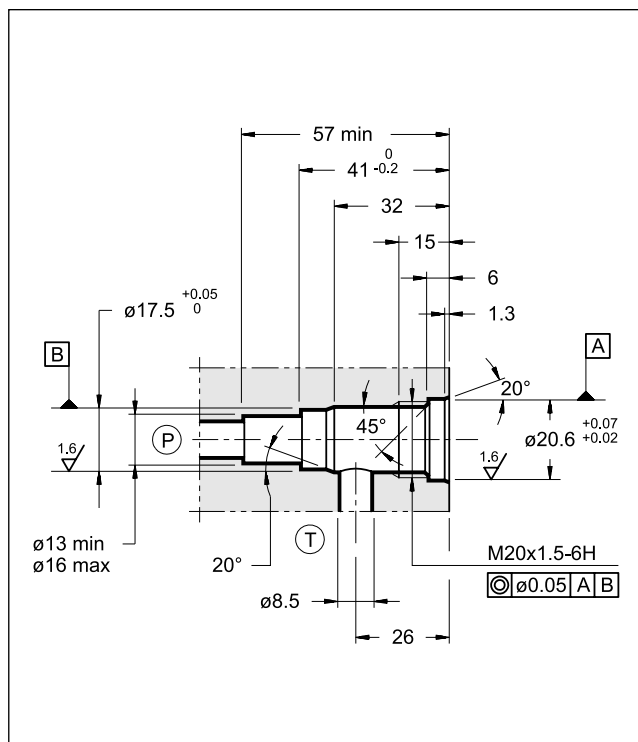
DIRECT OPERATED PRESSURE CONTROL VALVE SERIES 22

CARTRIDGE TYPE

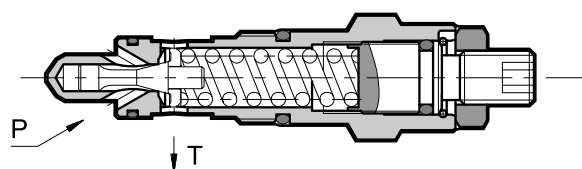
p max **350** bar

Q max **50** l/min

SEAT DIMENSIONS: D-10B



OPERATING PRINCIPLE

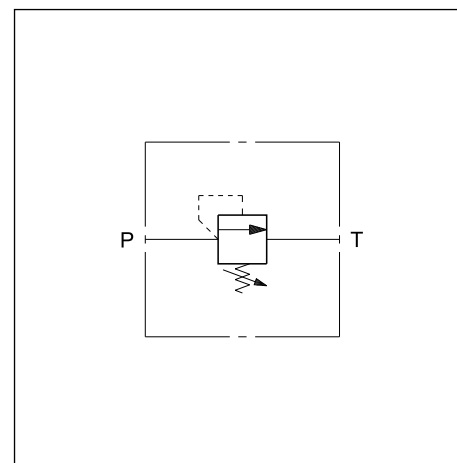


- The CR valve is a direct operated pressure control valve cartridge type that can be used in blocks or panels with type D-10B seat.
- It is normally used to control the maximum pressure in the hydraulic circuits or as a limiting device for pressure peaks generated during hydraulic actuator movement variation.
- It is available in five different pressure control ranges up to 350 bar.
- The circuit pressure acts on the shutter which is directly loaded by a spring on the opposite side. Once the set pressure is reached, the shutter opens, and discharges the excess flow in port T connected directly to the reservoir.
- The pressure can be adjusted by a screw, usually supplied as the countersunk hex type, equipped with locking nut and maximum adjustment limiter.

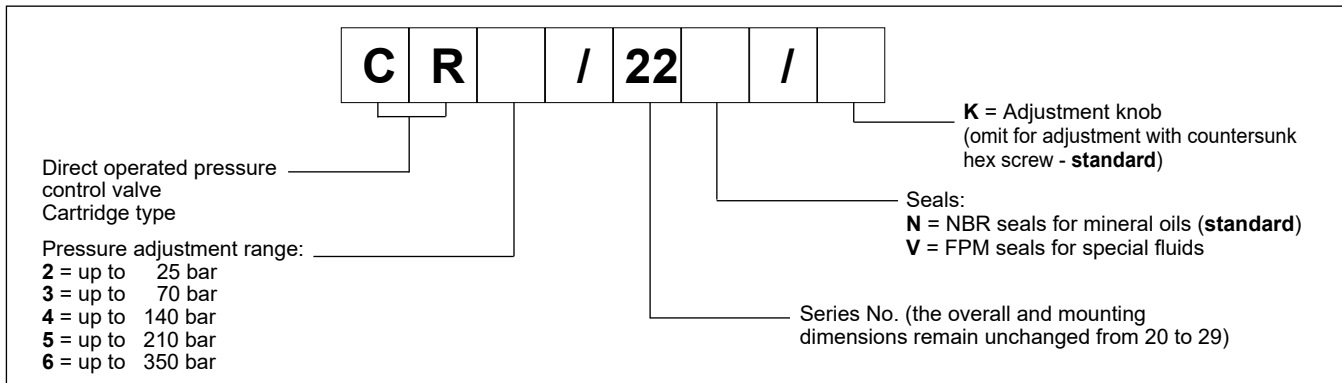
PERFORMANCES (measured with mineral oil of viscosity 36 cSt at 50°C)

Max working pressure	bar	350
Minimum controlled pressure and pressure drop	see diagram	
Maximum flow rate	l/min	50
Ambient temperature range	°C	-20 / +60
Fluid temperature range	°C	-20 / +80
Fluid viscosity range	cSt	10 ÷ 400
Fluid contamination degree	According to ISO 4406:1999 class 20/18/15	
Recommended viscosity	cSt	25
Mass	kg	0,16
Surface treatment: electrolytic zinc covering	Fe/Zn8/B ISO 2081	

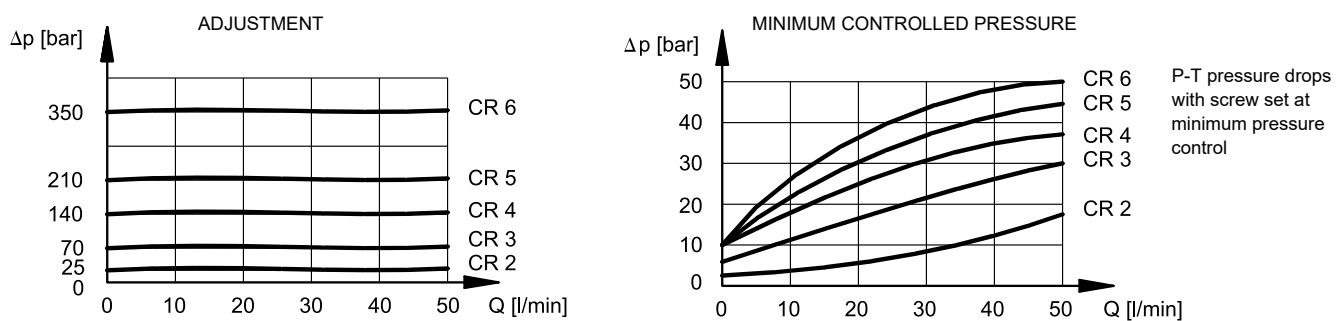
HYDRAULIC SYMBOL



1 - IDENTIFICATION CODE



2 - CHARACTERISTIC CURVES (values obtained with viscosity of 36 cSt at 50°C)



3 - HYDRAULIC FLUIDS

Use mineral oil-based hydraulic fluids HL or HM type, according to ISO 6743-4. For these fluids, use NBR seals (code N). For fluids HFDR type (phosphate esters) use FPM seals (code V). For the use of other kinds of fluid such as HFA, HFB, HFC, please consult our technical department. Using fluids at temperatures higher than 80 °C causes a faster degradation of the fluid and of the seals characteristics. The fluid must be preserved in its physical and chemical characteristics.

4 - OVERALL AND MOUNTING DIMENSIONS

