
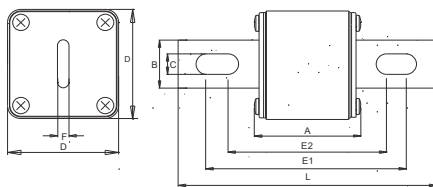
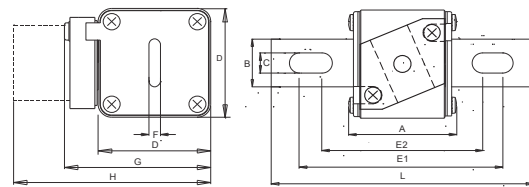


URS - SQB1	Rated Voltage [U <sub>n</sub> ]	Rated Breaking Test Capacity	Class aR	Standard(s)
	700V <sub>AC</sub> - UL 690V <sub>AC</sub> - IEC	200kA		UL 248-13 IEC 60269-4 VDE 0636-4
UL File E180276				

Rated current I <sub>n</sub> [A]	UL rec	US - Blade Short With fitting for microswitch Article Number	US - Blade Short Without indicator Article Number	US - Blade Long With fitting for microswitch Article Number	US - Blade Long No indicator Article Number
50	✓	2061632.50	2061731.50	2061832.50	2061931.50
63	✓	2061632.63	2061731.63	2061832.63	2061931.63
80	✓	2061632.80	2061731.80	2061832.80	2061931.80
100	✓	2061632.100	2061731.100	2061832.100	2061931.100
125	✓	2061632.125	2061731.125	2061832.125	2061931.125
160	✓	2061632.160	2061731.160	2061832.160	2061931.160
200	✓	2061632.200	2061731.200	2061832.200	2061931.200
250	✓	2061632.250	2061731.250	2061832.250	2061931.250
315	✓	2061632.315	2061731.315	2061832.315	2061931.315
350	✓	2061632.350	2061731.350	2061832.350	2061931.350
400	✓	2061632.400	2061731.400	2061832.400	2061931.400
450	✓	2061632.450	2061731.450	2061832.450	2061931.450
500	✓	2061632.500	2061731.500	2061832.500	2061931.500
550	✓	2061632.550	2061731.550	2061832.550	2061931.550
630	✓	2061632.630	2061731.630	2061832.630	2061931.630
700	✓	2061632.700 <sup>1</sup>	2061731.700 <sup>1</sup>	2061832.700 <sup>1</sup>	2061931.700 <sup>1</sup>
800	✓	2061632.800 <sup>1</sup>	2061731.800 <sup>1</sup>	2061832.800 <sup>1</sup>	2061931.800 <sup>1</sup>
900		2061632.900 <sup>2</sup>	2061731.900 <sup>2</sup>	2061832.900 <sup>2</sup>	2061931.900 <sup>2</sup>
<sup>1)</sup> Tested @ 1.05U <sub>n</sub> 690V-IEC, 700V-UL, <sup>2)</sup> Tested @ 1.05U <sub>n</sub> 600V-IEC, No-UL					
Weight [kg / 1]					
0.54      0.54      0.63      0.63					
Dimensions [in / mm]					
A		1.87 / 47.5	1.87 / 47.5	1.87 / 47.5	1.87 / 47.5
B		1.02 / 26	1.02 / 26	1.02 / 26	1.02 / 26
C		0.55 / 14	0.55 / 14	0.55 / 14	0.55 / 14
D		1.97 / 50	1.97 / 50	1.97 / 50	1.97 / 50
E <sub>1</sub>		4.29 / 109	4.29 / 109	5.04 / 128	5.04 / 128
E <sub>2</sub>		2.87 / 73	2.87 / 73	3.62 / 92	3.62 / 92
F		0.24 / 6	0.24 / 6	0.24 / 6	0.24 / 6
G		2.60 / 66	—	2.60 / 66	—
H		3.50 / 89	—	3.50 / 89	—
L		5.28 / 134	5.28 / 134	6.06 / 153	6.06 / 153



2061731 / 2061931



2061632 / 2061832

### Accessories

Article Description	Article Number	Page	Article Description	Article Number	Page
			Microswitch - NO-NC, UL E309038		
			Standard level	2800114	541
			Low level	2801114	

URS - SQB1

Rated Voltage

Rated Breaking Test

Class

Standard(s)

[U<sub>n</sub>]

Capacity

Voltage

aR

700V<sub>AC</sub> - UL

200kA

660V<sub>AC</sub>

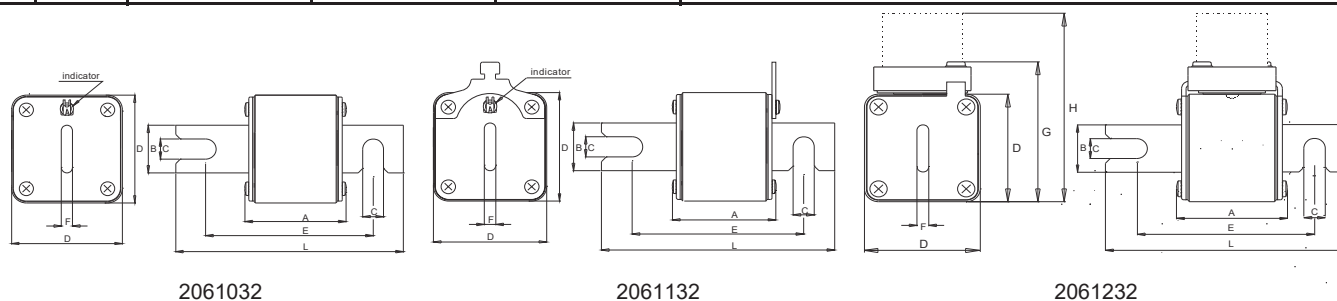
UL 248-13

IEC 60269-4

VDE 0636-4

UL File E180276

Rated current I <sub>n</sub> [A]	UL rec	DIN 80mm With flap indicator Article Number	DIN 80mm With fitting for microswitch Article Number	DIN 80mm With fitting for microswitch Article Number	
50	✓	2061032.50	2061132.50	2061232.50	
63	✓	2061032.63	2061132.63	2061232.63	
80	✓	2061032.80	2061132.80	2061232.80	
100	✓	2061032.100	2061132.100	2061232.100	
125	✓	2061032.125	2061132.125	2061232.125	
160	✓	2061032.160	2061132.160	2061232.160	
200	✓	2061032.200	2061132.200	2061232.200	
250	✓	2061032.250	2061132.250	2061232.250	
315	✓	2061032.315	2061132.315	2061232.315	
350	✓	2061032.350	2061132.350	2061232.350	
400	✓	2061032.400	2061132.400	2061232.400	
450	✓	2061032.450	2061132.450	2061232.450	
500	✓	2061032.500	2061132.500	2061232.500	
550	✓	2061032.550	2061132.550	2061232.550	
630	✓	2061032.630	2061132.630	2061232.630	
700	✓	2061032.700 <sup>1</sup>	2061132.700 <sup>1</sup>	2061232.700 <sup>1</sup>	
800	✓	2061032.800 <sup>1</sup>	2061132.800 <sup>1</sup>	2061232.800 <sup>1</sup>	
900		2061032.900 <sup>2</sup>	2061132.900 <sup>2</sup>	2061232.900 <sup>2</sup>	
<sup>1</sup> ) Tested @ 1.05U <sub>n</sub> 690V-IEC, 700V-UL, <sup>2</sup> ) Tested @ 1.05U <sub>n</sub> 600V-IEC, No-UL					
Weight [kg / 1]					
0.44      0.45      0.45					
Dimensions [in / mm]					
	A	1.87 / 47.5	1.87 / 47.5	1.87 / 47.5	
	B	1.02 / 26	1.02 / 26	1.02 / 26	
	C	0.43 / 11	0.43 / 11	0.43 / 11	
	D	1.97 / 50	1.97 / 50	1.97 / 50	
	E	3.00 / 76	3.00 / 76	3.00 / 76	
	F	0.24 / 6	0.24 / 6	0.24 / 6	
	G	—	—	2.60 / 66	
	H	—	—	3.50 / 89	
	L	4.29 / 109	4.29 / 109	4.29 / 109	



### Accessories

Article Description	Article Number	Page	Article Description	Article Number	Page
Fuse base, UL E180276			Microswitch - NO-NC, UL E309038		
Fuse base - 80mm center, 900V, 630A	2131301	545	Standard level	2800201	540
Fuse base - 80mm center, 900V, 1250A	2131302		Low level	2800203	
			Standard level	2800114	541
			Low level	2801114	

URS - SQB1



Rated Voltage

[U<sub>n</sub>]700V<sub>AC</sub> - UL690V<sub>AC</sub> - IEC

Rated Breaking Test Class

Capacity

200kA

Voltage

660V<sub>AC</sub>

aR

Standard(s)

UL 248-13

IEC 60269-4

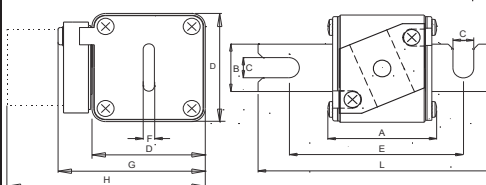
VDE 0636-4

UL File E180276

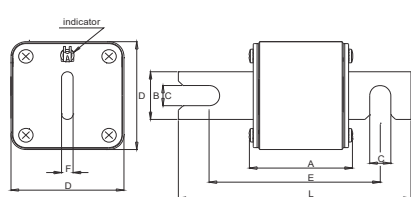
Rated current I <sub>n</sub> [A]	UL rec	DIN 110mm With flap indicator Article Number	DIN 110mm With fitting for microswitch Article Number	DIN 110mm With fitting for microswitch Article Number	DIN 110mm With fitting for microswitch Article Number
50	✓	2061332.50	2061432.50	2061532.50	2066632.50
63	✓	2061332.63	2061432.63	2061532.63	2066632.63
80	✓	2061332.80	2061432.80	2061532.80	2066632.80
100	✓	2061332.100	2061432.100	2061532.100	2066632.100
125	✓	2061332.125	2061432.125	2061532.125	2066632.125
160	✓	2061332.160	2061432.160	2061532.160	2066632.160
200	✓	2061332.200	2061432.200	2061532.200	2066632.200
250	✓	2061332.250	2061432.250	2061532.250	2066632.250
315	✓	2061332.315	2061432.315	2061532.315	2066632.315
350	✓	2061332.350	2061432.350	2061532.350	2066632.350
400	✓	2061332.400	2061432.400	2061532.400	2066632.400
450	✓	2061332.450	2061432.450	2061532.450	2066632.450
500	✓	2061332.500	2061432.500	2061532.500	2066632.500
550	✓	2061332.550	2061432.550	2061532.550	2066632.550
630	✓	2061332.630	2061432.630	2061532.630	2066632.630
700	✓	2061332.700*	2061432.700*	2061532.700*	2066632.700*
800	✓	2061332.800*	2061432.800*	2061532.800*	2066632.800*
900		2061332.900*	2061432.900*	2061532.900*	2066632.900*

<sup>1)</sup> Tested @ 1.05U<sub>n</sub> 690V-IEC, 700V-UL, <sup>2)</sup> Tested @ 1.05U<sub>n</sub> 600V-IEC, No-UL

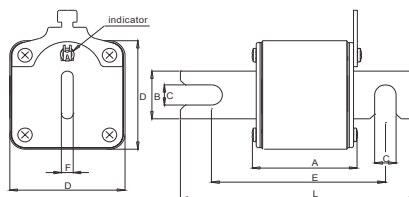
Weight [kg / 1]					
		0.48	0.49	0.49	0.49
Dimensions [in / mm]					
A	1.87 / 47.5	1.87 / 47.5	1.87 / 47.5	1.87 / 47.5	1.87 / 47.5
B	1.02 / 26	1.02 / 26	1.02 / 26	1.02 / 26	1.02 / 26
C	0.43 / 11	0.43 / 11	0.43 / 11	0.43 / 11	0.43 / 11
D	1.97 / 50	1.97 / 50	1.97 / 50	1.97 / 50	1.97 / 50
E	4.17 / 106	4.17 / 106	4.17 / 106	4.17 / 106	4.17 / 106
F	0.24 / 6	0.24 / 6	0.24 / 6	0.24 / 6	0.24 / 6
G	—	2.60 / 66	2.60 / 66	2.60 / 66	2.60 / 66
H	—	3.50 / 89	3.50 / 89	3.50 / 89	3.50 / 89
L	5.28 / 134	5.28 / 134	5.28 / 134	5.28 / 134	5.28 / 134



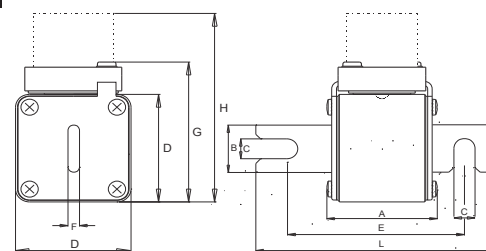
2066632 - "Special" - Microswitch rotated 90°



2061332



2061432



2061532

### Accessories

Article Description	Article Number	Page	Article Description	Article Number	Page
Fuse base, UL E180276			Microswitch - NO-NC, UL E309038		
Fuse base - 110mm center, 1400V, 630A	2132301	545	Standard level	2800201	540
Fuse base - 110mm center, 1400V, 1250A	2132302		Low level	2800203	
			Standard level	2800114	541
			Low level	2801114	

URS - SQB1

Rated Voltage

Rated Breaking Test

Class

Standard(s)

[U<sub>n</sub>]

Capacity

Voltage

aR

700V<sub>AC</sub> - UL

200kA

660V<sub>AC</sub>

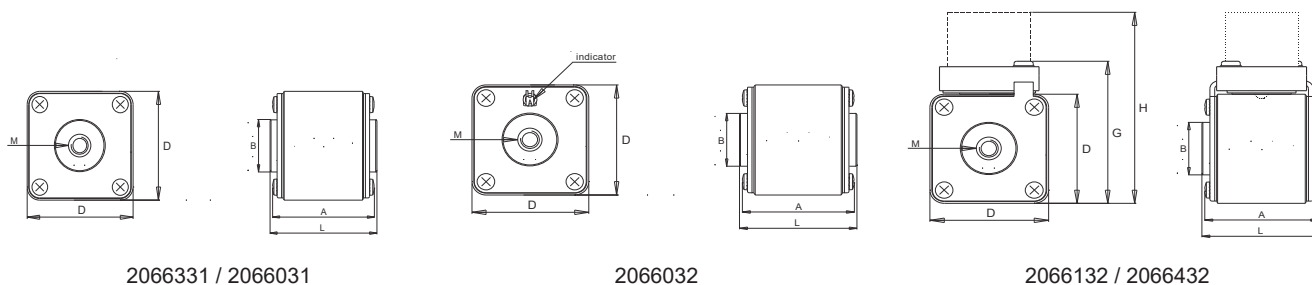
UL 248-13

IEC 60269-4

VDE 0636-4

UL File E180276

Rated current I <sub>n</sub> [A]	UL rec	US - 5/16" UNC Without indicator Article Number	US - 5/16" UNC With fitting for microswitch Article Number	DIN M8 Without indicator Article Number	DIN M8 With flap indicator Article Number	DIN M8 With fitting for microswitch Article Number	
50	✓	2066331.50	2066432.50	2066031.50	2066032.50	2066132.50	
63	✓	2066331.63	2066432.63	2066031.63	2066032.63	2066132.63	
80	✓	2066331.80	2066432.80	2066031.80	2066032.80	2066132.80	
100	✓	2066331.100	2066432.100	2066031.100	2066032.100	2066132.100	
125	✓	2066331.125	2066432.125	2066031.125	2066032.125	2066132.125	
160	✓	2066331.160	2066432.160	2066031.160	2066032.160	2066132.160	
200	✓	2066331.200	2066432.200	2066031.200	2066032.200	2066132.200	
250	✓	2066331.250	2066432.250	2066031.250	2066032.250	2066132.250	
315	✓	2066331.315	2066432.315	2066031.315	2066032.315	2066132.315	
350	✓	2066331.350	2066432.350	2066031.350	2066032.350	2066132.350	
400	✓	2066331.400	2066432.400	2066031.400	2066032.400	2066132.400	
450	✓	2066331.450	2066432.450	2066031.450	2066032.450	2066132.450	
500	✓	2066331.500	2066432.500	2066031.500	2066032.500	2066132.500	
550	✓	2066331.550	2066432.550	2066031.550	2066032.550	2066132.550	
630	✓	2066331.630	2066432.630	2066031.630	2066032.630	2066132.630	
700	✓	2066331.700 <sup>1</sup>	2066432.700 <sup>1</sup>	2066031.700*	2066032.700*	2066132.700*	
800	✓	2066331.800 <sup>1</sup>	2066432.800 <sup>1</sup>	2066031.800*	2066032.800*	2066132.800*	
900	✓	2066331.900 <sup>2</sup>	2066432.900 <sup>2</sup>	2066031.900*	2066032.900*	2066132.900*	
<sup>1)</sup> Tested @ 1.05U <sub>n</sub> , 690V-IEC, 700V-UL, <sup>2)</sup> Tested @ 1.05U <sub>n</sub> , 600V-IEC, No-UL							
Weight [kg / 1]							
0.40      0.41      0.40      0.41      0.40							
Dimensions [in / mm]							
A      1.87 / 47.5      1.87 / 47.5      1.87 / 47.5      1.87 / 47.5      1.87 / 47.5							
B      0.94 / 24      0.94 / 24      0.94 / 24      0.94 / 24      0.94 / 24							
D      1.97 / 50      1.97 / 50      1.97 / 50      1.97 / 50      1.97 / 50							
G      —      2.60 / 66      2.60 / 66      —      —							
H      —      3.50 / 89      3.50 / 89      —      —							
L      2.00 / 51      2.00 / 51      2.00 / 51      2.00 / 51      2.00 / 51							
M      5/16" UNC      M8							
Thread depth 0.39 / 10							
Torque max. - 22N•m / 16.2lb•ft							




2066331 / 2066031

2066032

2066132 / 2066432

### Accessories

Article Description	Article Number	Page	Article Description	Article Number	Page
			Microswitch - NO-NC, UL E309038		
			Standard level	2800114	541
			Low level	2801114	

URS - SQB1	Rated Voltage [U <sub>n</sub> ]	Rated Breaking Test Capacity	Class aR	Standard(s)
	700V <sub>AC</sub> - UL 690V <sub>AC</sub> - IEC	200kA		UL 248-13 IEC 60269-4 VDE 0636-4
UL File E180276				

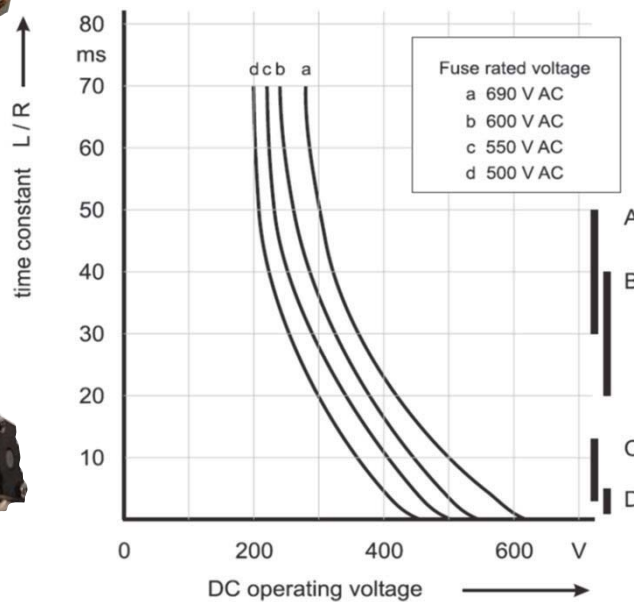
Rated current I <sub>n</sub> [A]	Rated voltage [U <sub>n</sub> ] IEC 60269-4 [V]	Rated voltage [U <sub>n</sub> ] UL 248-13 [V]		Pre-arcing i <sup>2</sup> t [A <sup>2</sup> s]	Total i <sup>2</sup> t @ 660V <sub>AC</sub> [A <sup>2</sup> s]	Power loss [W]
50	690	700		110	590	12
63	690	700		160	850	19
80	690	700		260	1 400	24
100	690	700		420	2 300	30
125	690	700		600	3 100	35
160	690	700		1 400	7 500	40
200	690	700		2 400	13 000	44
250	690	700		3 700	21 000	51
315	690	700		6 600	39 000	59
350	690	700		9 900	55 000	61
400	690	700		17 000	96 000	65
450	690	700		22 000	130 000	70
500	690	700		31 000	180 000	72
550	690	700		41 000	250 000	75
630	690	700		61 000	370 000	80
700	690*	700		86 000	490 000	85
800	690*	700		120 000	750 000	99
900	600*	—		170 000	990 000	105

\* Tested @ 1.05xU<sub>n</sub>

## Coefficients for Heavy Duty Applications

a	A2	B1 <sub>max</sub>	B2	Cf3
130	0.6	1.25	0.6	0.8

## DC Application



The use under DC-Voltage needs to consider the following

- the DC-Circuit voltage
- the time constant
- the smallest fault current

## typical applications

- A Traction
- B DC-Drives
- C Battery circuits
- D DC-Link, VSI, USV, PV

As a first assumption the minimum fault current should be 10 times the planned fuse rating. If smaller fault currents are expected our application engineers should be consulted.

URS - SQB1



UL File E180276

Rated Voltage

[U<sub>n</sub>]700V<sub>AC</sub> - UL690V<sub>AC</sub> - IEC

Rated Breaking Test

Capacity

200kA

Voltage

660V<sub>AC</sub>

Class

aR

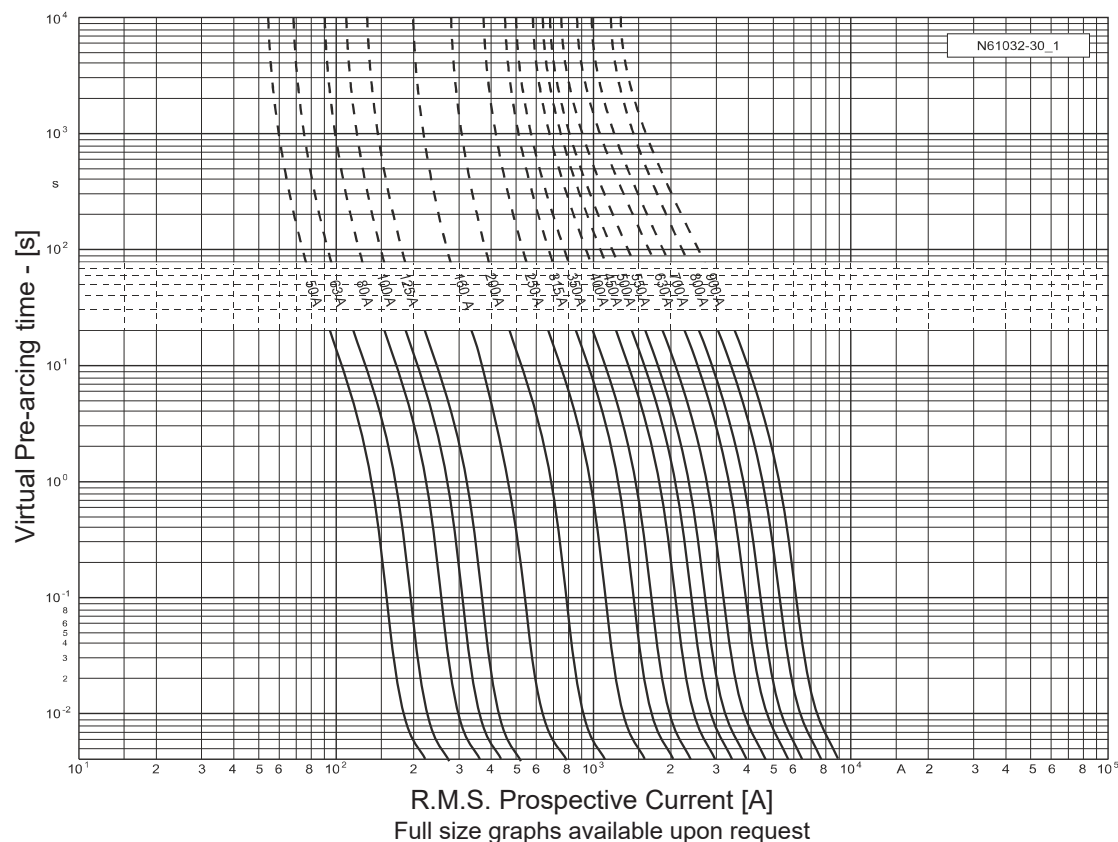
Standard(s)

UL 248-13

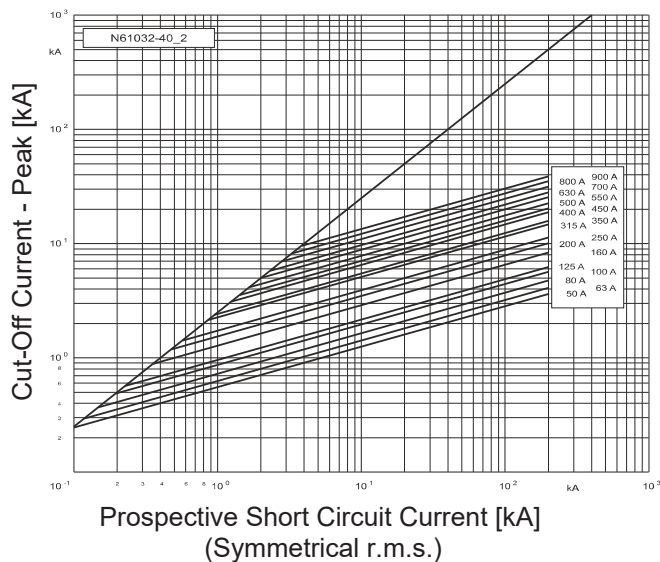
IEC 60269-4

VDE 0636-4

## Time-Current Characteristics



## Cut-Off Current Characteristics



## Correction Curves

