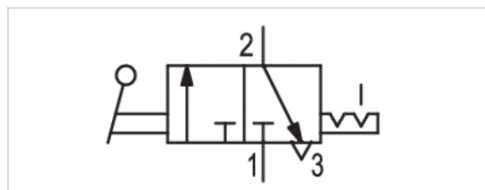


# 3/2-directional valve, Series A-Pilotair®

- 2-HA-1 2-HA-1L
- Qn = 1308.72 l/min
- Compressed air connection output Ø 1/4"



Version	Poppet valve
Activation	Manual
Sealing principle	Soft sealing
Nominal flow Qn	1308.72 l/min
Working pressure min./max.	0 ... 13.7 bar
Control pressure min./max.	0 ... 17.3 bar
Ambient temperature min./max.	-40 ... 71 °C
Medium temperature min./max.	-40 ... 71 °C
Medium	Compressed air
Max. particle size	50 µm
Oil content of compressed air	0 ... 1 mg/m³
Weight	0.68 kg



## Technical data

Part No.	Type	Version	Compressed air connection Input	Compressed air connection Output
R431004994	with detent	2-HA-1	Ø 1/4"	Ø 1/4"
R431004996	with detent	2-HA-1	Ø 1/4"	Ø 1/4"
R431006456	with detent	2-HA-1	Ø 1/4"	Ø 1/4"
R431004997	With latch	2-HA-1L	Ø 1/4"	Ø 1/4"
R431004999	With latch	2-HA-1L	Ø 1/4"	Ø 1/4"
R431004998	With latch	2-HA-1L	Ø 1/4"	Ø 1/4"

Part No.	Housing material	
R431004994	Die-cast aluminum	-
R431004996	Die-cast aluminum chromated	-
R431006456	Die-cast aluminum	1)
R431004997	Die-cast aluminum	-
R431004999	Die-cast aluminum chromated	-
R431004998	Die-cast aluminum black painted	-

1) With long handle

## Technical information

The model 2-HA-1 valve is a panel mounted, handle operated 3-way valve with 1/4" NPT inlet and outlet ports. It contains a spring opposed detent cam to hold the handle in either of its two extreme positions.

The 2-HA-1L model is with an additional external handle latch which requires manual release to insure against unintentional operation.

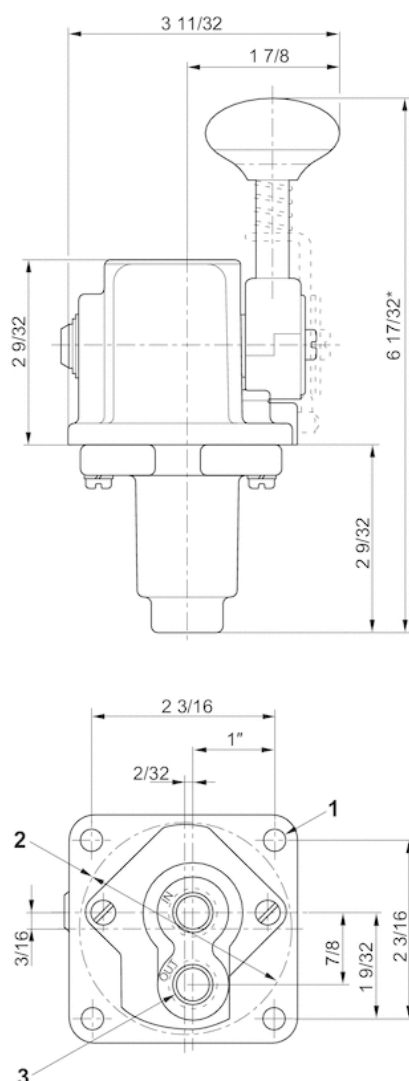
## Technical information

### Material

Housing	Die-cast aluminum Die-cast aluminum, chromated Die-cast aluminum, black painted
Front cover	chromated black painted

## Dimensions

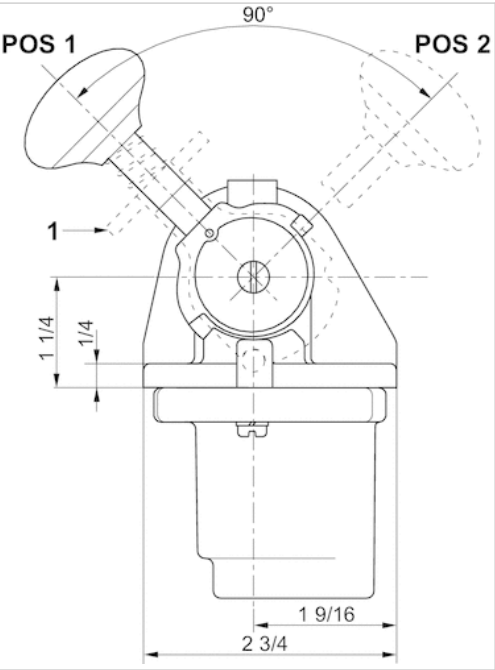
### Dimensions in inches



1) 9/32 diameter (4) places

- 2) Mounting hole Ø2 9/16  
3) 1/4 - 18 NPTF  
\* \*Also available with handle 2" longer

Handle position



1) Optional Handle Latch

Handle position

Handle position	Out Port Supplied
1	
2	X

X denotes port supplied in that position. Empty block denotes port exhausted in that position.