

## 1667, 1669 Series Visicounter

For the most demanding applications, indoors or outside . . . withstands dust, moisture, oil, grease, shock, and vibration.

Combines excellent performance with practically indestructible construction. The counter of choice where only the most durable can survive. Commonly used on construction equipment, cement mixers, paving equipment, stokers, agricultural machinery, and other applications in extremely hostile environments. Available in both ratchet and geared drives, the 1667, 1669 Series features highly visible white-on-black figures, quick rotary-reset, rugged die cast case, and steel shaft.



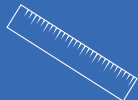
- Unaffected by harsh application environments
- Die cast metal and steel external components
- 6 figures – large, easy-to-read numerals
- Oversized 0.3125 (7.9 mm) plated steel shaft
- Ratchet drive and geared drive models
- Geared drive available in 1:1 and 3:1 ratio
- Ratchet drive has positive stop and internal return spring
- Quick, rotary reset
- Long life – no lubrication required
- Shaft accepts standard measuring wheels



TIME



COUNT



MEASURE

8:43

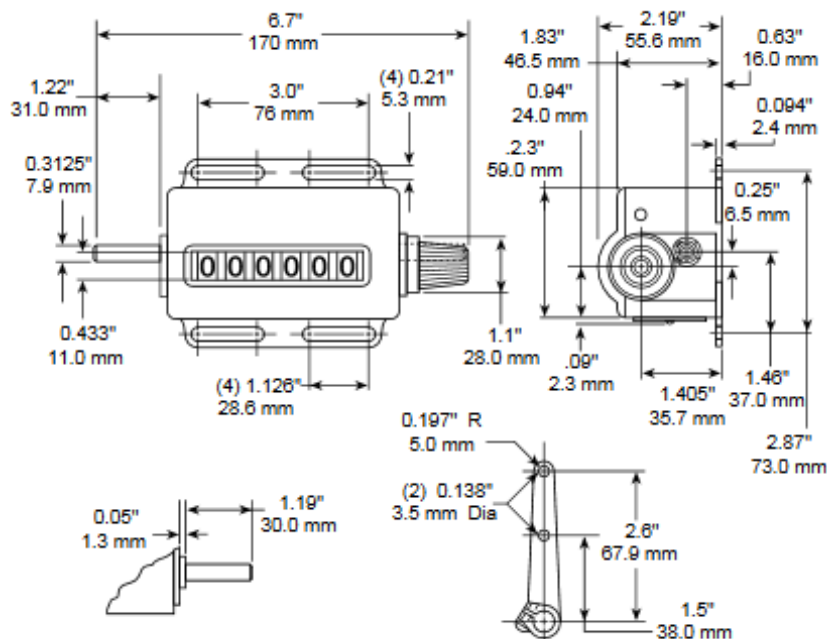
DISPLAY

ESVR1023-0001 Rev.A

## SPECIFICATIONS

SPEED	Ratchet: 500 cpm Geared: 1500 rpm or 5000 cpm whichever is limiting
DRIVE	Ratchet Drive (1667 Series) adds one count for each drive shaft actuation, arc of 26° to 45° for rotations 1 and 3, arc of 42° to 67° for rotations 2 and 4, maximum travel limited internal lever return spring;
DRIVE TORQUE	Geared Drive (1669 Series) adds one count for specified number of drive shaft revolutions in specific rotation, will not subtract past zero on right hand wheel, standard gear ratio is 1:1 or 3:1
NUMBER OF FIGURES	6
SIZE OF FIGURES	0.345" high x 0.250" wide (8.8mm x 6.4mm)
COLOR OF FIGURES	White on Black
RESET	Manual Knob (standard). Lock and Key Option Available.
MOUNTING	Base
CONSTRUCTION	Case: Zamak Base: Steel Wheels, Pinions: Acetal resin Shaft: Plated steel
WEIGHT	1 lb. 4 oz. (0.9 kg)

## DIMENSIONS



## ORDERING INFORMATION

### Standard Models

166716-006	Ratchet Drive
166916-006	Gear Drive, 3:1 Ratio
166726-006	Ratchet Drive
166736-006	Ratchet Drive
166936-005	Gear Drive, 1:1 Ratio
166746-006	Ratchet Drive
166946-005	Gear Drive, 1:1 Ratio

Special Variations Available. Please consult factory.

### Obsolete parts

166916-004	Gear Drive 1:1 Ratio
------------	----------------------

### Rotation Diagram

