



WA-800 Product Family

Technical Specifications

Indicators

- WA-801
- WA-802
- WA-802r
- WA-810

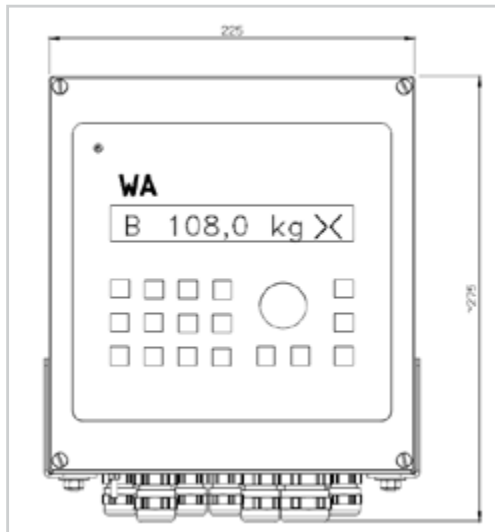
Controllers

- WA-804
- WA-805
- WA-806
- WA-807



WA-800 Product Family

System dimensions

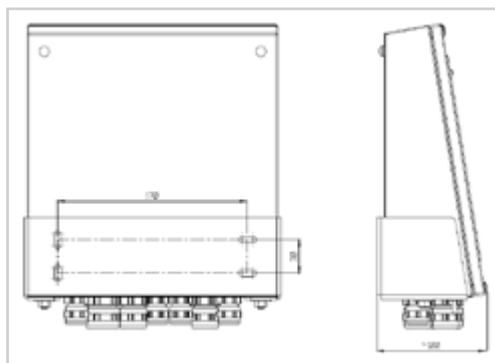


WA-801...WA-807: System dimensions

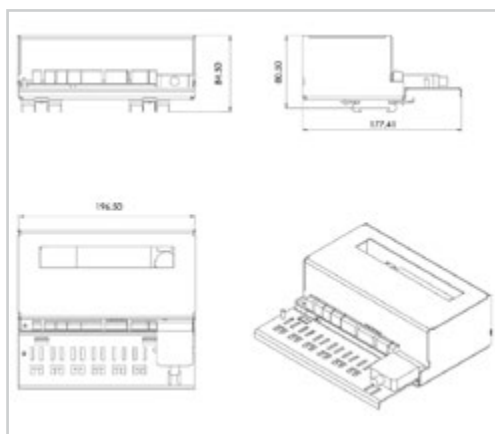
The WA-800 is a complete weighing indicator for a variety of applications.

The WA-800 Product Family offers two housing options, which include a tabletop device and a wall-mounted device both in stainless steel design. The protection class of these devices are IP65.

Protection class of the WA-802r is IP20. It's housing material is also stainless steel. WA-802r is installed to DIN-rail.



WA-801...WA-807: Wall mounting



The dimensions of the WA-802r top-hat rail mounting

WA-800 Product Family

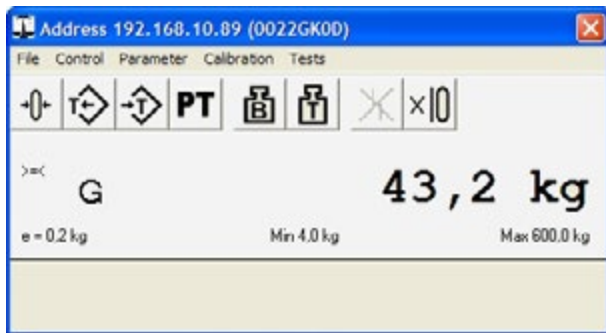
WA-plan

OPERATING SYSTEMS

The WA-plan PC program is available for conveniently configuring and parametering the WA-800 Product family scales.

Acceptable operating systems are:

- WINDOWS 2000
- WINDOWS XP
- WINDOWS 7



Following operations can be configured with WA-plan

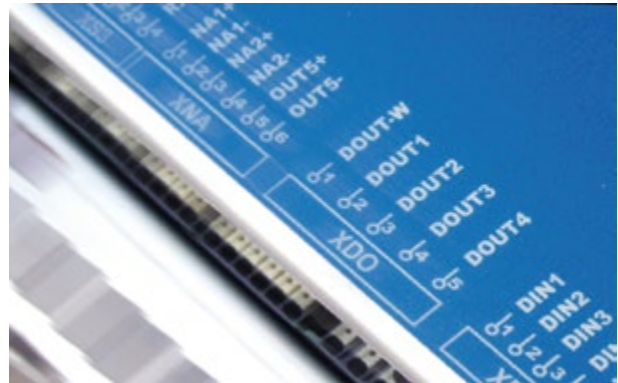
- Assign subscriber addresses to the serial bus
- Calibrate the instrument
- Configure interfaced instruments
- Conveniently configure the print pattern
- Read-out and display of weight signals
- Edit and load the language files into WA-800
- Read out the entire system configuration (back-up) and store in the PC
- Load stored data into a WA-800 (restore) for fast substitute system set-up.

LANGUAGES

Standard WA-800 operation is in Finnish and English. All operator guidance is carried out and data is entered in clear text.

PARAMETER STORING

All parameter and calibration data are stored power failure safe in the instrument. The real-time clock runs at least 7 days without a power supply.



WA-800 Product Family

Weight Indicators and Controllers

Technical Data

	WA-801	WA-802 WA-804 - 807	WA-802r	WA-810
Display	LCD with backlight, 1 row 20 characters, character height 12mm			
Keyboard	9 keys	21 keys	no keyboard	6 keys
Supply voltage	85-250 VAC, 47-63 Hz, max. 10 VA		18-36 VDC, max. 10 W	85-250 VAC, 47-63 Hz, max. 10 VA
Temperature range	Operating temperature: -30 to +60 °C, storage: -40 to +80 °C Legal for trade operating temperature: -20 to +40 °C			
Measuring channels	1			
Load cell supply	5 VAC			
Input signal	0 to 15 mV			-20 mV...+20 mV
Sensitivity	0,6 µV/d			
Measuring units	kg, g, t, lb, N, kN			kg/h, t/h, lb/h
Increment value	1, 2 and 5, etc. adjustable from 0.01 - 5000			
Number of digits	Legal-for-trade operation (EN45501, OIML III) Max. 6000 d Multi-range scale 3 x 6000 d, Multi-interval scale 3 x 6000 d No limitation to resolution in non legal-for-trade operation			
Taring	To 100 % of the weighing range			
Zero setting device	Can be set max. 20%. Automatic zero tracking 0.5 d/sec, can be selected; automatic zero setting can be selected			
Load cell impedance	Min 43 Ω (8 x 350 Ω load cell) Max. 4500 Ω			
Date/time	Real time clock (RTC), Back-up time at least 7 days			
Housing	Stainless steel 1.4301; Protection class IP65, suitable for desktop and wall mounting		DIN rail mounting, IP20	Stainless steel 1.4301; Protection class IP65, suitable for desktop and wall mounting
Digital inputs	-	4 x optocoupler, 18 - 36 VDC, typ. 5 mA		WA-802 inputs + 1 x NAMUR, max. 5 VDC, 0.04-3000Hz
Digital outputs	-	4 x relay, 50 VAC/30 VDC, max. 60 W		WA-802 outputs + 1 x optocoupler, 18 - 36 VDC, max. 50 mA
Analog output	1 x 0(4) – 20 mA, 12 Bit, max. load 500 Ω			
Ethernet interface	-	10/100 Mbit/s, integrated		
Standard fieldbus interfaces	Modbus RTU	Modbus RTU, Modbus TCP		
Optional fieldbus interfaces	Profibus DP-V0 DeviceNet	Profibus DP-V0, DeviceNet, Ethernet/IP		
Serial interfaces	1 x RS-232	2 x RS-232, 1 x RS-485 2/4 wire		1 x RS-485 2/4 wire
EDP protocols	Siemens 3964R, S5 (RK512), DDP8672, DDP8785, MODBUS, SB03			-
USB interface	-	Integrated, for PC keyboard		-

WA-800 Product Family

Weight Indicators and Controllers

Technical Data

Devices	
WA-801 Weight Indicator	Basic Weighing Applications
WA-802 Weight Indicator	Advanced Weighing Solutions
WA-802r Weight Indicator	Top-hat Rail Installations
WA-804 Totalizing Scale Controller	Receiving and Load-out Scales
WA-805 Filling Scale Controller	Automatic Filling Scale Applications
WA-806 Discharge Scale Controller	Automatic Discharge Scale Applications
WA-807 Catch Weighing Controller	Automatic Check Weighers
WA-810 Totalizing Belt Scale Indicator	Stand Alone Belt Weighers

Options
Profibus interface module
DeviceNet interface module
PC keyboard (USB)
Legal-for-trade memory module

