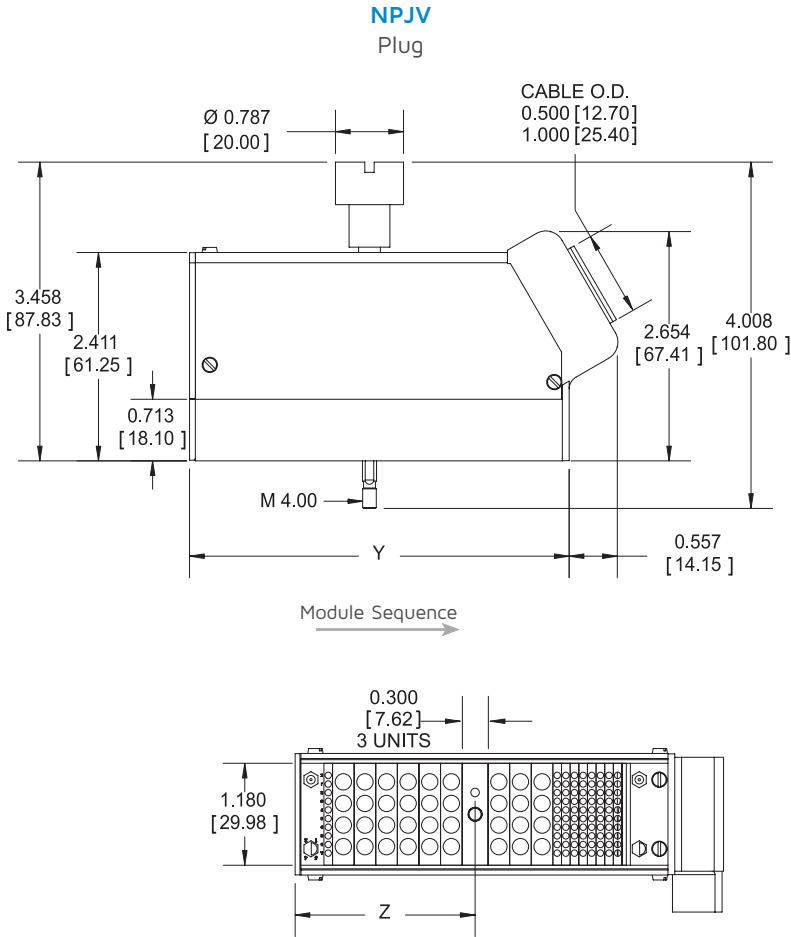


Frame JV Plug

Up to 775 Contacts

- Hooded with cable clamp
- Threaded Jackscrew extractor
- Single row, rack and panel with keying
- Built-in pin protection on the plug frames
- 36 possible keying combinations
- Standard sizes: 11, 15, 19, 23, 27, 31 and 35 unit lengths
- Up to 350 contacts on 0.100 x 0.100 [2.54 x 2.54] centers
- Jackscrew uses 3 units
- Adjustable cable clamp will hold 80 to 320 conductors of 22 to 28 AWG; adjusts 0.500 [12.70] to 1.00 [25.40] min.
- Refer to NEBV or NEPJV frame for mating receptacle
- Up to 320 contacts on 0.100 x 0.100 [2.54 x 2.54] centers

Units	Y	Z	Plug	Receptacle
11	1.993 [50.64]	0.884 [22.47]	NPJV11	NEJV11
15	2.393 [60.80]	1.084 [27.55]	NPJV15	NEJV15
19	2.794 [70.96]	1.284 [32.63]	NPJV19	NEJV19
23	3.194 [81.12]	1.484 [37.71]	NPJV23	NEJV23
27	3.594 [91.28]	1.684 [42.79]	NPJV27	NEJV27
31	4.000 [101.44]	1.884 [47.87]	NPJV31	NEJV31
35	4.393 [111.60]	2.084 [52.95]	NPJV35	NEJV35



Notes: 1. Frame JV mates with NEBV or NEPJV. 2. Protective dust cover part number: YHD0369-XX (XX = number of units). Dimensions are in inches [mm].