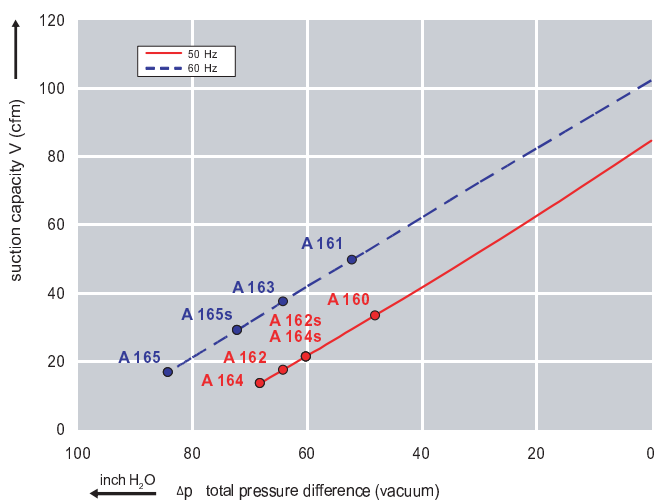




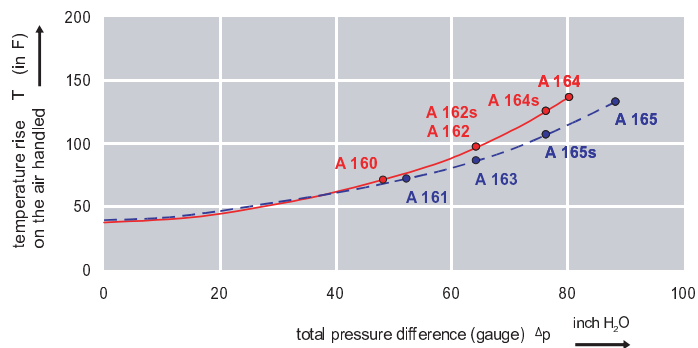
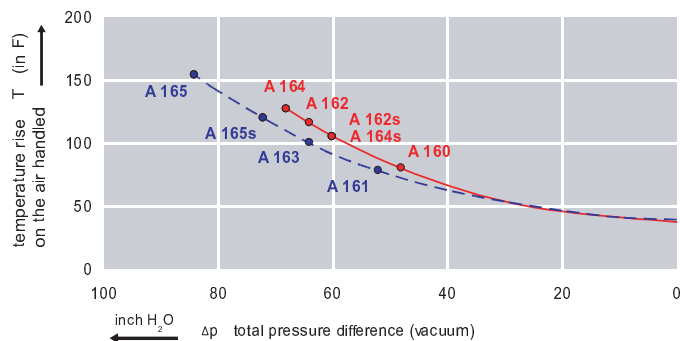
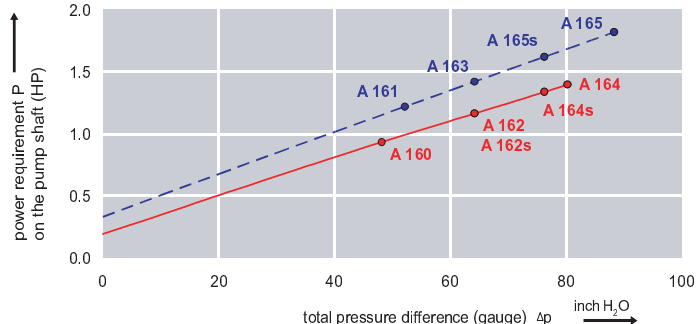
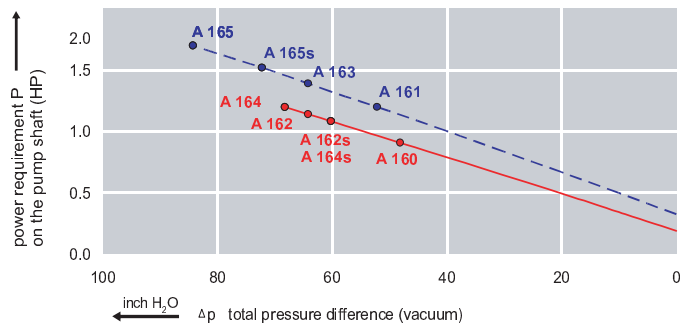
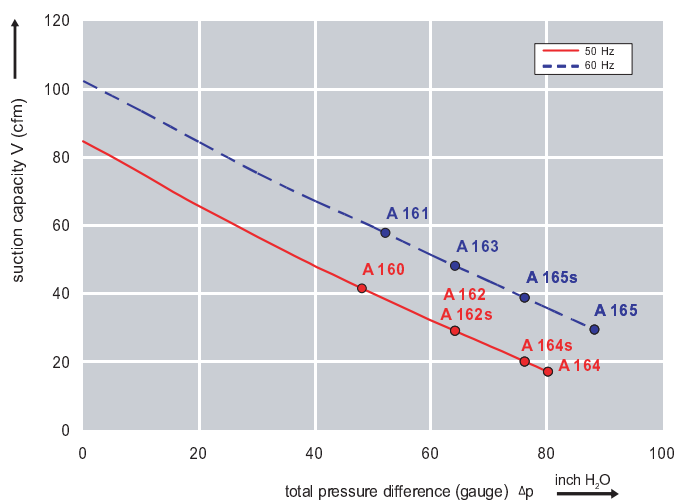
Features:

- Cooler running, outboard bearing provides maintenance-free operation
- Environmentally friendly oil-free technology
- Extremely quiet operation
- All motors are standard TEFC with Class F insulation, UL recognized, CE Compliant
Explosion-Proof motors available
- Custom construction blowers are available
- Rugged die cast aluminum construction

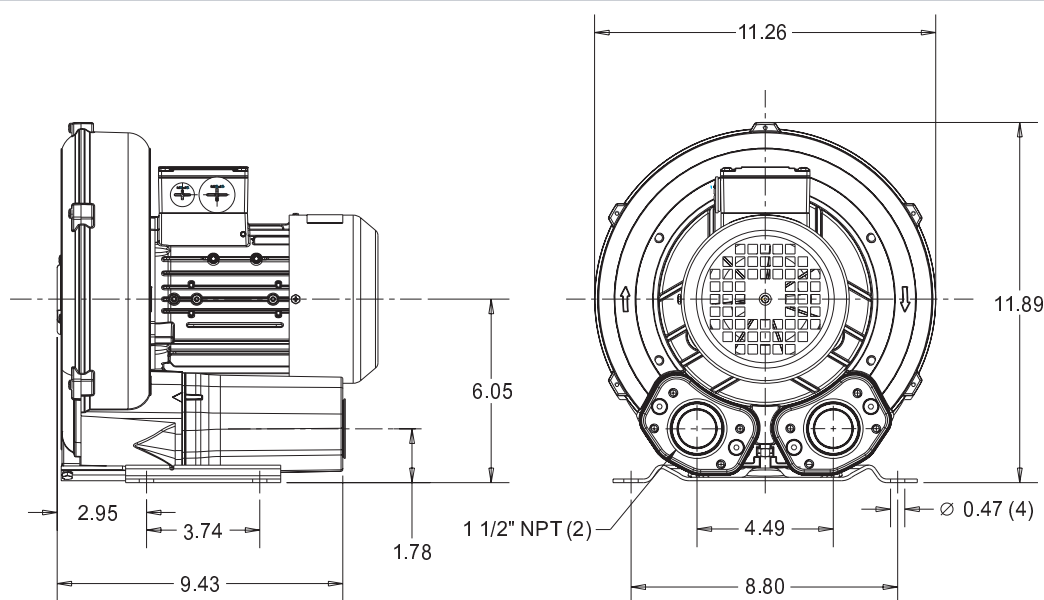
Performance curve for Vacuum pump



Performance curve for Compressor



AFS-20-150-10
(Pressure)



Curve No.	Order No.	Fre- quency	Rated power	Input voltage		Input current		Permissible total differential pressure		Sound pressure level dB(A)	Weight lbs
		Hz	HP					Vacuum inch H2O	Compressor inch H2O		
3~ 50/60 Hz IP55 insulation material class F											
A 160	3BA1400-7AT06	50	0.94	200D ... 240D	345Y ... 415Y	3.8 D	2.2 Y	-48	48	63	29
A 161	3BA1400-7AT06	60	1.11	220D ... 250D	415Y ... 460Y	3.75D	2.15Y	-52	52	64	29
A 162	3BA1400-7AT16	50	1.14	200D ... 240D	345Y ... 415Y	4.2 D	2.4 Y	-64	64	63	33
A 163	3BA1400-7AT16	60	1.27	220D ... 250D	415Y ... 460Y	4.0 D	2.3 Y	-64	64	64	33
A 164	3BA1400-7AT26	50	1.74	200D ... 240D	345Y ... 415Y	5.7 D	3.3 Y	-68	80	63	35
A 165	3BA1400-7AT26	60	2.01	220D ... 250D	415Y ... 460Y	5.5 D	3.2 Y	-84	88	64	35
1~ 50/60 Hz IP55 with capacitor for continuous operation											
A 164s	3BA1400-7AS25	50	1.47	115	230	13	6.5	-60	76	63	35
A 165s	3BA1400-7AS25	60	1.74	115	230	14	7.0	-72	76	64	35