

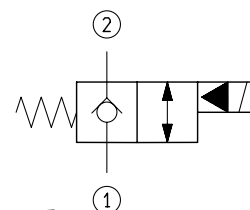
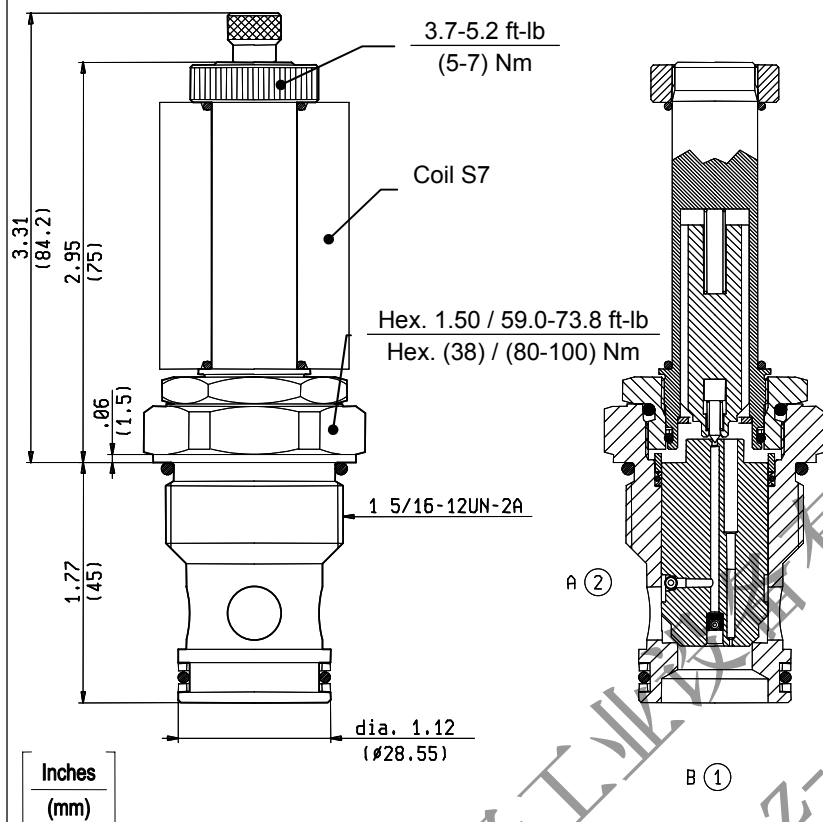


**SOLENOID OPERATED VALVES**  
**POPPET 2-WAY NORMALLY CLOSED**  
**COMMON CAVITY**

**VEI-7A-2B-16A-NC-S**

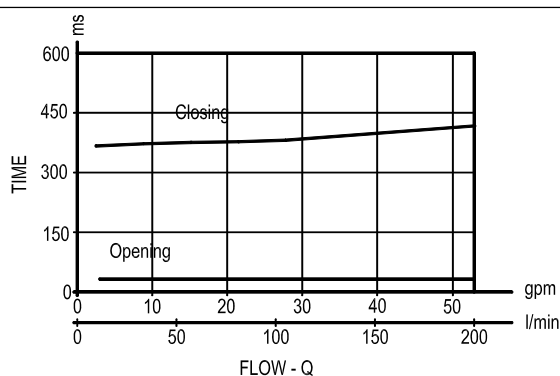
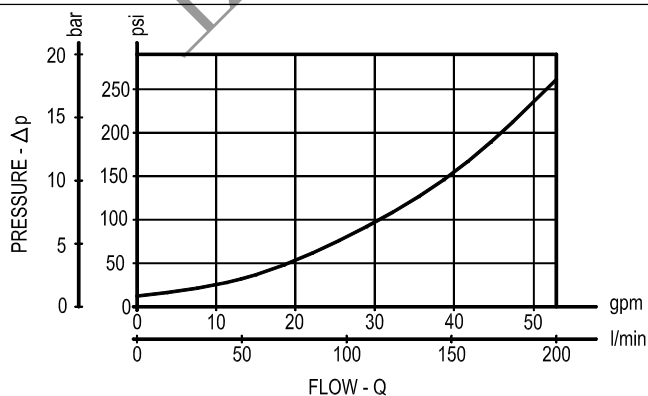
**SIZE 16**

**OD.15.03.75 - Y - 00**



**TECHNICAL DATA**

Maximum Operating Pressure	5000 psi (350 bar)
Rated Flow	52 gpm (200 l/min)
Cavity - Tooling (CA-16A-2N)	page CT.A.001.U
Weight	0.882 lbs (0.400 kg)
Fluids - Temperatures	page 7.01.040
Testing Conditions - Seals	page 7.01.040
Internal Leakage	page 7.01.040
Filtration : 25 $\mu$ m nominal or better	page 7.01.050
Minimum Voltage Required	90% of nominal
<b>Coils must be ordered separately</b>	<b>page 1.71.070</b>
Mounting Position	unrestricted



**Y**

**ORDERING OPTIONS**

**75** Standard



**76** Knob Style Manual Override

