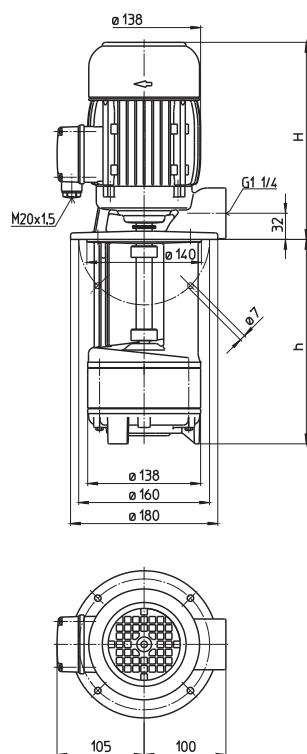


Immersion Pumps

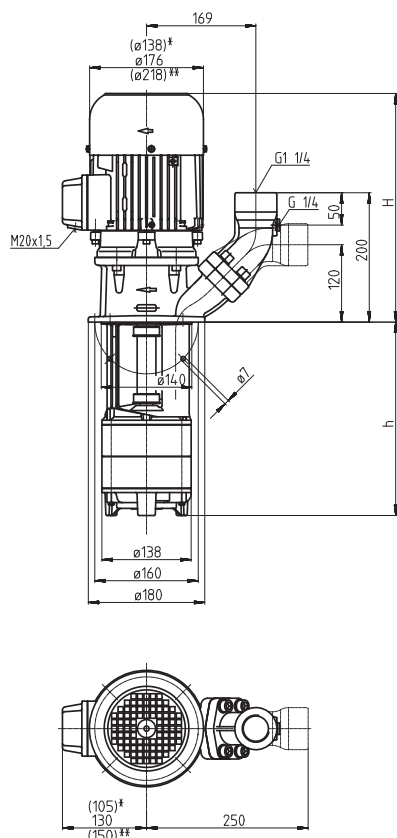
TA/STA301...306

Semi-open impellers

TA302



STA301...306



*) Dimensions for STA301, 302
**) Dimensions for STA306

Type	Vol. del. at manom. del. head l/min / m	Height H mm	Depth of im- mersion h mm	Weight kg	Power kW	Voltage 3 ~ V	Fre- quen- cy Hz	Current A	Speed 1/min
TA302/170	160/12	291	170	18	1.1	220-240	50	4.33	2850
250			250	19		380-415	50	2.50	2850
320			320	20					
400			400	21	1.27	460	60	2.4	3440
490			490	22					
600			600	24					
STA301/120	160/8	334	120	20.5	0.63	220-240	50	2.70	2850
200			200	21.5		380-415	50	1.56	2850
270			270	22.5					
350			350	23.5	0.725	460	60	1.46	3425
440			440	25.0					
550			550	26.5					
STA302/170	160/12	361	170	26	1.1	220-240	50	4.33	2850
250			250	27		380-415	50	2.50	2850
320			320	28					
400			400	29	1.27	460	60	2.4	3440
490			490	31					
600			600	33					
STA303/220	160/18	380	220	36	1.5	220-240	50	5.5	2880
300			300	37		380-415	50	3.2	2880
370			370	38					
450			450	39	1.75	460	60	3.1	3470
540			540	40					
650			650	42					
850			850	48					
1000			1000	50					
STA304/270	160/24	439	270	45	1.9	220-240	50	6.84	2900
350			350	46		380-415	50	3.95	2900
420			420	47					
500			500	49	2.18	460	60	3.9	3500
590			590	50					
700			700	52					
900			900	58					
1050			1050	60					
STA305/320	160/29	439	320	50	2.6	220-240	50	9.30	2880
400			400	51		380-415	50	5.35	2880
470			470	52					
550			550	53	2.94	460	60	5.1	3480
640			640	54					
750			750	56					
950			950	63					
1100			1100	65					
STA306/370	160/37	478	370	63	3.3	220-240	50	11.6	2930
450			450	64		380-415	50	6.7	2930
520			520	65					
600			600	66	3.8	460	60	6.4	3520
690			690	67					
800			800	69					
1000			1000	76					

Immersion Pumps

are plain centrifugal pumps with the impeller fitted on the driving shaft extension. They are mounted on top of the container, the pump extension being immersed in the coolant.

The maximum coolant level must stay a few mm/inches below the mounting flange.

The STA series offers a **(SAE) flange** with pressure gauge connection port.

The flange can be rotated for either horizontal or vertical pipe connections.



All types are also available as quick-suctioning immersion pumps equipped with "**BRINKMANN's Suction De-aeration System**". See series TAL/SAL.



All types are also available as suction immersion pump with a connection to the vacuum filters on the suction side. See series STS.

Applications

Types of fluid

coolants

cooling/cutting oils

Kinematic viscosity

...45 mm²/s (45 cSt)

Pumping temperature

0...80° C

0...60° C (TA302)

higher temperatures upon request

Construction

Pump body

cast iron

Cover

cast iron

Impellers

POM (TA302)

brass

POM (TA302)

Shaft

steel

Optional:

Suction cover

with threaded inlet

Impeller

cast steel

Other materials

on request

Noise level

TA302...STA302

60 dBA

STA303...STA305

66 dBA

STA306

71 dBA

