

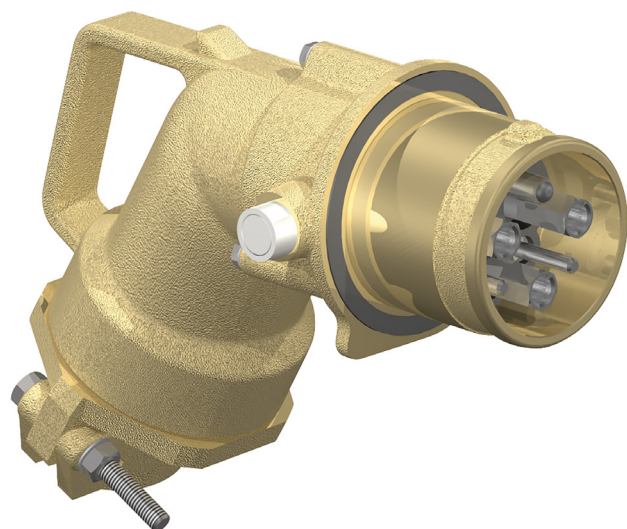
## X4PR395

PROCONNECT 3PX4 Plug - Angled, 3P+E+2p, 250A, suits 95mm<sup>2</sup> cable, w/ Crimp Terminals



Component type	Round socket/plug for high currents
Range	3PX/3PV
Model	N/A
Product status	Existing

The Proconnect 3PX and 3PV range of high current plugs and sockets suit a variety of industries including mining, marine, transportation and commercial applications. Available in either a screw ring (3PV) or push-pull connection (3PX) type. Current ratings of 160A to 660A (at 3.3 kV) and corrosion proof aluminium construction make it ideal for the harsh Australian environment.



ELECTRICAL	Amperage	250.0 A
	Voltage	1 - 3300 V
	Contact configuration	3P+E+2P
CONSTRUCTION	Construction type	Plug
	Material insulation body	Other
	Degree of protection (IP)	IP67
DIMENSIONS	Weight	2.1 kg
ENVIRONMENT	Operating temperature	-30 - 60 °C