

Relief, direct acting poppet type

Special cavity, Size 348

VS-5-C

04.11.44 - X - Y - Z

Description

Flow is blocked from 1 to 2 until pressure increases to meet the selected valve setting, lifting the poppet from its seat and allowing relief flow through 2 to tank. Pressure at 2 is additive to the relief setting of the valve. The cartridge is suitable only for pilot or thermal relief applications.

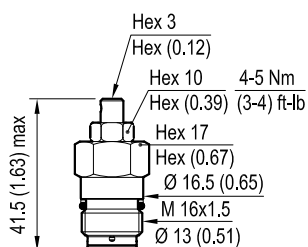
Technical data

Max pressure	bar (psi)	400 (5800)
Max flow	l/min (gpm)	1.5 (0.4)
Installation torque	Nm (ft-lb)	27-33 (20-24)
Special Cavity		348
Weight	kg (lbs)	0.05 (0.11)
Fluid temperature range	°C (°F)	between -30 (-22) and +100 (+212)

The pressure setting must be done after installation, because the spring cannot be compressed while the threaded adjuster must be fully released prior to unscrewing the cartridge from cavity.

Dimensions

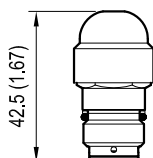
Leakproof hex socket screw



OPTION

Sealing cap

ordering code 030501012
R930000473



mm (Inches)

Ordering code

04.11.44	X	Y	Z
----------	---	---	---

Relief, direct acting poppet type

Adjustments

= 03 Leakproof hex. socket screw

Special cavity Size 348

SPRINGS

	Adj. press. range bar (psi)	Press. increase bar/turn (psi/turn)	Std. setting cracking pressure bar (psi)
= 05	25-50 (363-725)	24 (348)	50 (725)
= 10	50-100 (725-1450)	47 (682)	100 (1450)
= 20	100-210 (1450-3045)	97 (1407)	200 (2900)
= 40	200-400 (2900-5800)	215 (3118)	350 (3500)

Type	Material number
041144039905000	R930000196
041144039910000	R930000199
041144039920000	R930000200

Type	Material number
041144039940000	R930000201