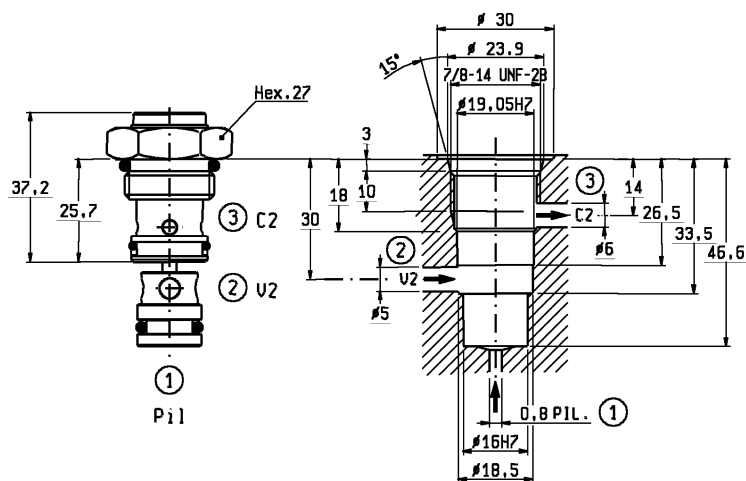
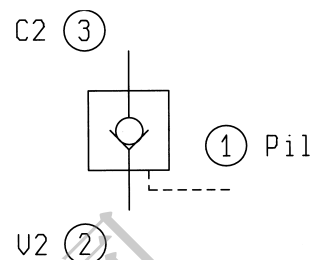
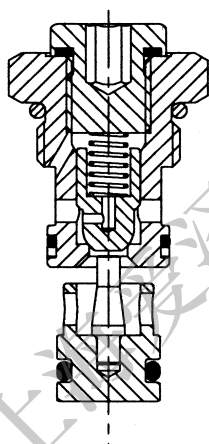


**VU-38-P**

**04.31.14 - X - Y - Z**



CAVITA' - CAVITY N.058



**DATI TECNICI / TECHNICAL DATA**

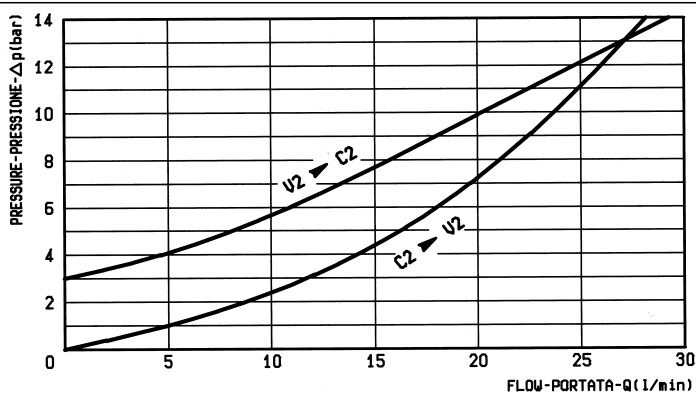
Coppia di serraggio  
Installation torque 75-87 Nm

Pressione di lavoro max.  
Max. working pressure 350 bar

Portata max.  
Flow max. 30 l/min

Rapporto di pilotaggio  
Pilot ratio 7 : 1

Peso  
Weight 0.1 kg



**X**

**GUARNIZIONE SUL PISTONE  
DI PILOTAGGIO  
O-RING ON PILOT PISTON**

**10**

**con guarnizione  
with o-ring**

**Z**

**MOLLE / SPRINGS**

Inizio apertura  
(bar)  
Cracking pressure  
(bar)

Cod. ordinazione  
Ordering code

Colore  
Colour

**00**

**3**

**03.51.01.024**

**01**

**8**

**03.51.01.051**

**Y**

**ATTACCHI / PORT SIZE**

**99**

**Cartuccia/Cartridge**