

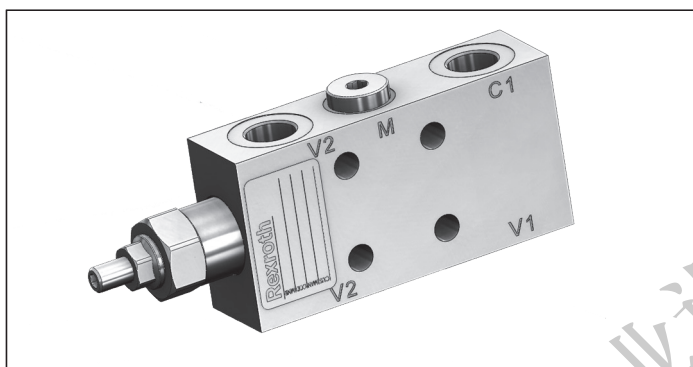
Single counterbalance

A-VBSO-SE30-FC1

08.39.62 - X - Y - Z

RE 18307-31

Edition: 04.2015



Technical data

General	
Manifold material	Steel
Fluid temperature range	-30 °C to 100 (-22 to 212 °F)
Other technical data	see data sheet 18350-50
Hydraulic	
Max. operating pressure	350 bar (5000 psi)
Max. flow	see performance graph
Relief setting: at least 1.3 times the highest expected load	

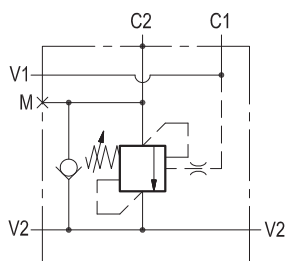
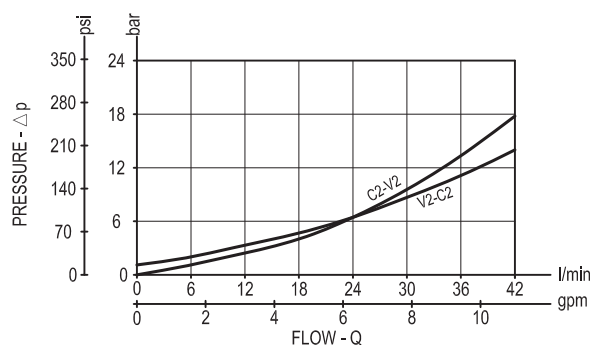
Note: for applications outside these parameters, please consult us.

Description

When pressure at V2 rises above the spring bias pressure, the check seat is pushed away from the piston and flow is allowed from V2 to C2. When load pressure at C2 rises above the pressure setting, the direct operated relief function is activated and flow is relieved from C2 to V2. With pilot pressure at V1-C1, the pressure setting is reduced in proportion to the stated ratio of the valve, until opening and allowing flow from C2 to V2. The spring chamber is drained to V2, and any back-pressure at V2 is additive to the pressure setting in all functions. For safety and compactness, the C2 port is gasket mounted the actuator.

Note: port identified with M are not protected with calibrated orifice but in direct connection with pressure channels.

Characteristic curve



Ordering code

08.39.62	X	Y	Z
----------	---	---	---

Single counterbalance, vented

Pilot ratio

= 03 4.2:1

SPRINGS		
Adj. pressure range bar (psi)	Pres. increase bar/turn (psi/turn)	Std. setting Q=5 (l/min) bar (psi)
= 35 100-350 (1450-5000)	138 (2042)	350 (5000)

Tamper resistant cap code
11.04.23.002
R930000752



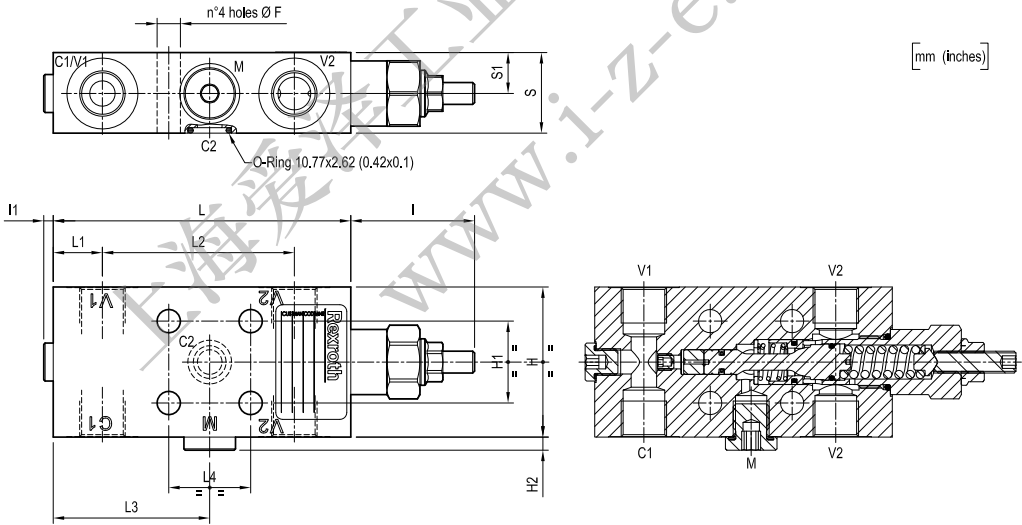
Port sizes	V1-V2-C1	C2	M
= 02	G 3/8	Ø 9	G 1/4
= 03	G 1/2	Ø 9	G 1/4

Preferred types

Type	Material number
083962030235000	R930007078
083962030335000	R930007081

Type	Material number

Dimensions



17.5 (0.69)	34.5 (1.36)	30 (1.18)	57 (2.24)	71.8 (2.83)	18 (0.71)	109 (4.29)	3.5 (0.14)	47 (1.85)	4.8 (0.19)	30 (1.18)	65 (2.56)	8.5 (0.34)		G 1/2	1.68 (3.7)
15 (0.59)	29.5 (1.16)	30 (1.18)	57.3 (2.25)	70.3 (2.77)	18 (0.71)	109 (4.29)	3.5 (0.14)	45.5 (1.79)	4.8 (0.19)	30 (1.18)	55 (2.17)	8.5 (0.34)		G 3/8	1.26 (2.78)
S1	S	L4	L3	L2	L1	L	I1	I	H2	H1	H	F		Y	Weight kg (lbs)