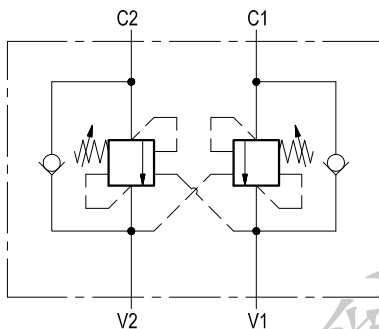


# Dual counterbalance

A-VBSO-DE-30-PI

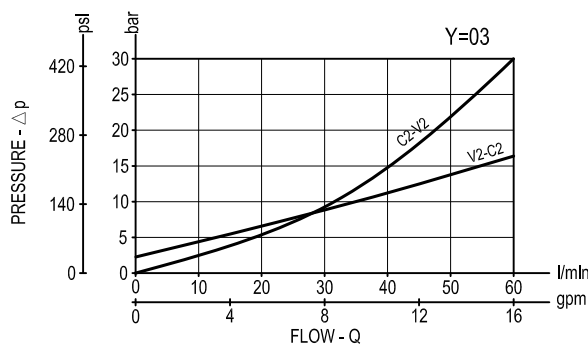
08.48.11 - X - Y - Z



## Description

It provides static and dynamic control of load by regulating the flow IN and OUT of the actuator, through ports C1 and C2. This valve module includes 2 sections, each one composed by a check and a relief valve pilot assisted by pressure in the opposite line: the check section allows free flow into the actuator, then holds the load against reverse movement; with pilot pressure applied at the line across, the pressure setting of the relief is reduced in proportion to the stated ratio until opening and allowing controlled reverse flow. Back-pressure at V1 or V2 is additive to the pressure setting in all functions.

## Performance



## Technical data

### Hydraulic

|                         |             |            |
|-------------------------|-------------|------------|
| Max. operating pressure | bar (psi)   | 350 (5000) |
| Max. flow               | l/min (gpm) | 60 (16)    |

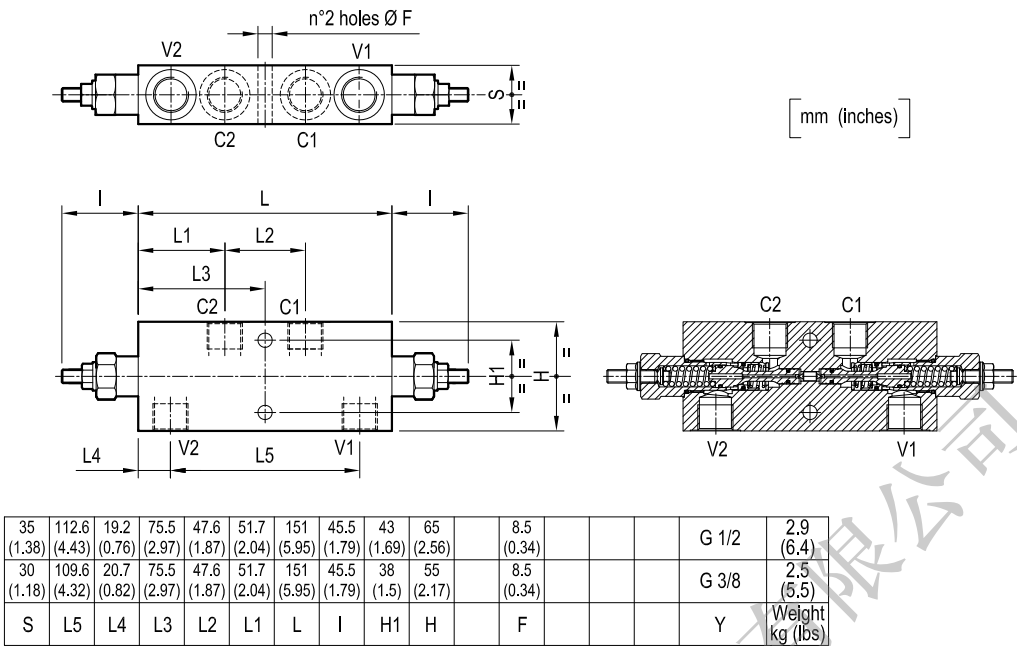
Relief setting: at least 1.3 times the highest expected load.

### General

|                         |  |
|-------------------------|--|
| Manifold material       | Steel                                    |
| Weight                  | see "Dimensions"                         |
| Fluid temperature range | °C (°F) between -30 (-22) and +100 (212) |
| Other technical data    | see data sheet RE 18350-50               |

**Note:** for applications outside these parameters, please consult us.

Dimensions



Ordering code

08.48.11

X

Y

Z

Dual counterbalance

Pilot ratio

= 03    4.2:1

| Port sizes | V1-V2 | C1-C2 |  |
|------------|-------|-------|--|
| = 02       | G 3/8 | G 3/8 |  |
| = 03       | G 1/2 | G 1/2 |  |

Tamper resistant cap  
code 11.04.23.002  
R930000752

| SPRINGS                             |  |   |
|-------------------------------------|--|---|
| Adj. pressure<br>range<br>bar (psi) | Pres. increase<br>bar/turn<br>(psi/turn) | Std. setting<br>Q=5 (l/min.)<br>bar (psi) |
| = 20<br>60-210<br>(870-3000)        | 63<br>(914)                              | 200<br>(2900)                             |
| = 35<br>100-350<br>(1450-5000)      | 138<br>(2001)                            | 350<br>(5000)                             |

| Type            | Material number | Type | Material number |
|-----------------|-----------------|------|-----------------|
| 084811030220000 | R930006936      |      |                 |
| 084811030235000 | R930006445      |      |                 |
| 084811030320000 | R930006817      |      |                 |
| 084811030335000 | R930006818      |      |                 |
|                 |                 |      |                 |
|                 |                 |      |                 |
|                 |                 |      |                 |