



***MODEL: HCT10  
HYDRAULIC CONTROLLER***

OVERVIEW / OPERATION:

THE HC10 IS A 3 WAY, NORMALLY CLOSED, BLOCK BEFORE BLEED, PILOT OPERATED, AUTOMATIC HYDRAULIC CONTROLLER. IT IS NORMALLY INSTALLED IN A CONTROL PANEL. IT RECEIVES INSTRUMENT PRESSURE FROM A SAFETY SYSTEM COMPONENT SUCH AS A MASTER RELAY AND HYDRAULIC SUPPLY PRESSURE FROM A PUMP.

DURING NORMAL OPERATION, INSTRUMENT PRESSURE HOLDS THE CONTROLLER IN THE OPEN POSITION. THE SUPPLY PRESSURE PASSES THROUGH THE OUTLET AND THE HYDRAULIC SYSTEM WILL MAINTAIN THE REQUIRED WORKING PRESSURE. \*INSTRUMENT PRESSURE IS PROPORTIONATE TO SUPPLY PRESSURE\*

WHEN THE MASTER RELAY IS ACTUATED, IT WILL BLEED INSTRUMENT PRESSURE FROM THE CONTROLLER AND THE CONTROLLER WILL RETURN TO THE CLOSED POSITION. THE SUPPLY PRESSURE BECOMES BLOCKED, THE OUTLET IS EXHAUSTED AND RETURNED TO THE RESERVOIR; THUS CLOSING THE SDV OR ACTUATOR.

SHOULD HYDRAULIC WORKING PRESSURE BE REQUIRED TO OPEN THE SDV OR SYSTEM BEFORE INSTRUMENT PRESSURE (PORT P) IS RETURNED, THE MANUAL OVERRIDE MAY BE USED. THE OVERRIDE HANDLE IS MANUALLY SCREWED IN; THIS ALLOWS SUPPLY PRESSURE (PORT A) TO PASS THROUGH THE OUTLET (PORT C) AND THE HYDRAULIC SYSTEM TO MAINTAIN ITS WORKING PRESSURE. WHEN INSTRUMENT PRESSURE (PORT P) IS RETURNED, THE MANUAL OVERRIDE MUST BE MANUALLY RELEASED FOR THE CONTROLLER TO RESUME NORMAL OPERATING CONDITIONS.

FEATURES:

- ALL VITON O-RINGS
- 316/316L STAINLESS STEEL MATERIALS
- 10,000 PSI (689.48) MAWP
- 1/4" NPT CONTROL PORTS

CONNECTIONS:

PORT A  
SUPPLY PRESSURE INLET  
500 - 10,000 PSI (34.47 - 689.48 bar)

PORT B  
EXHAUST (VENT) PORT

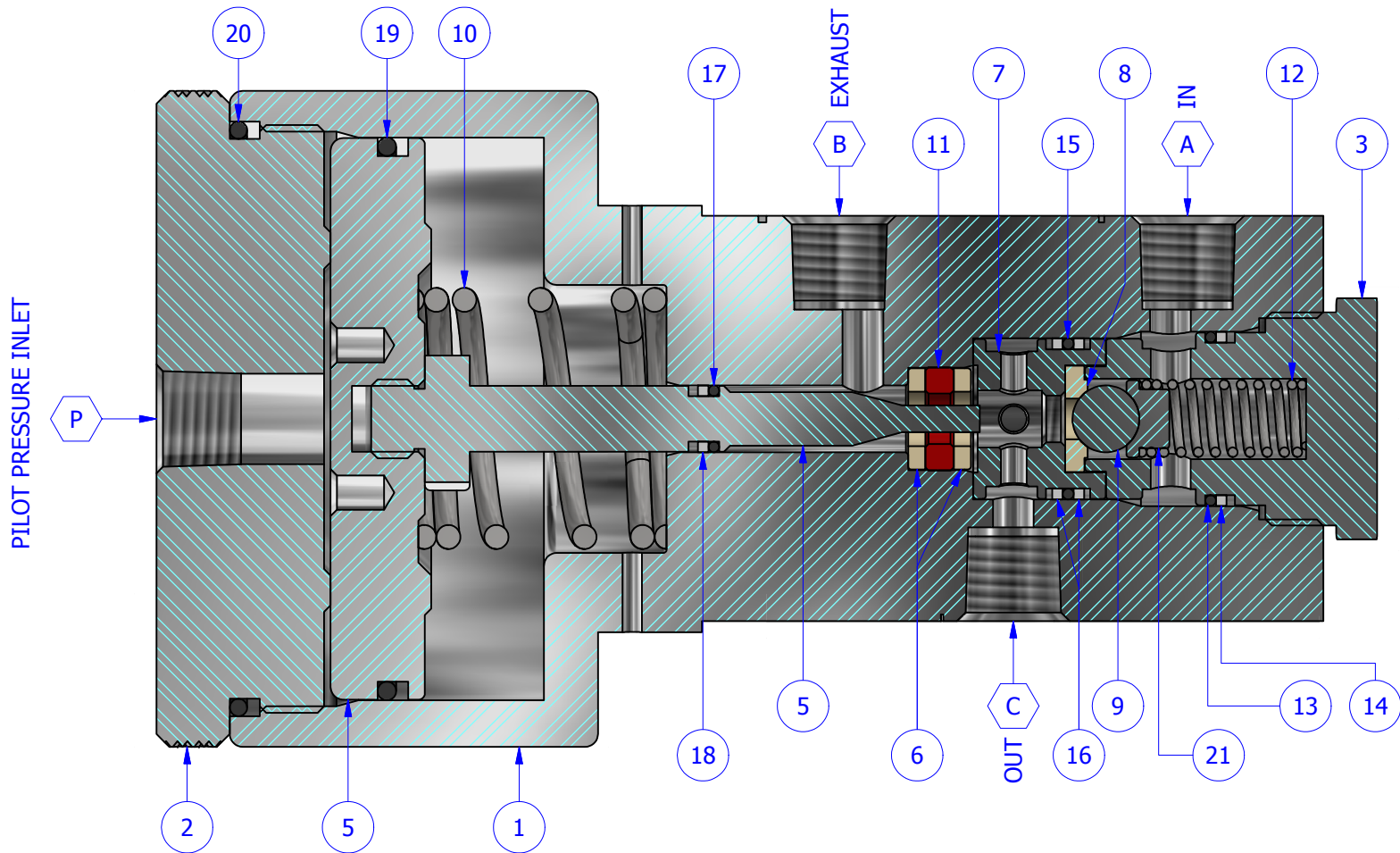
PORT C  
SUPPLY PRESSURE OUTLET

PORT P  
INSTRUMENT PRESSURE INLET  
30 - 250 PSI (2.07 - 17.23 bar)

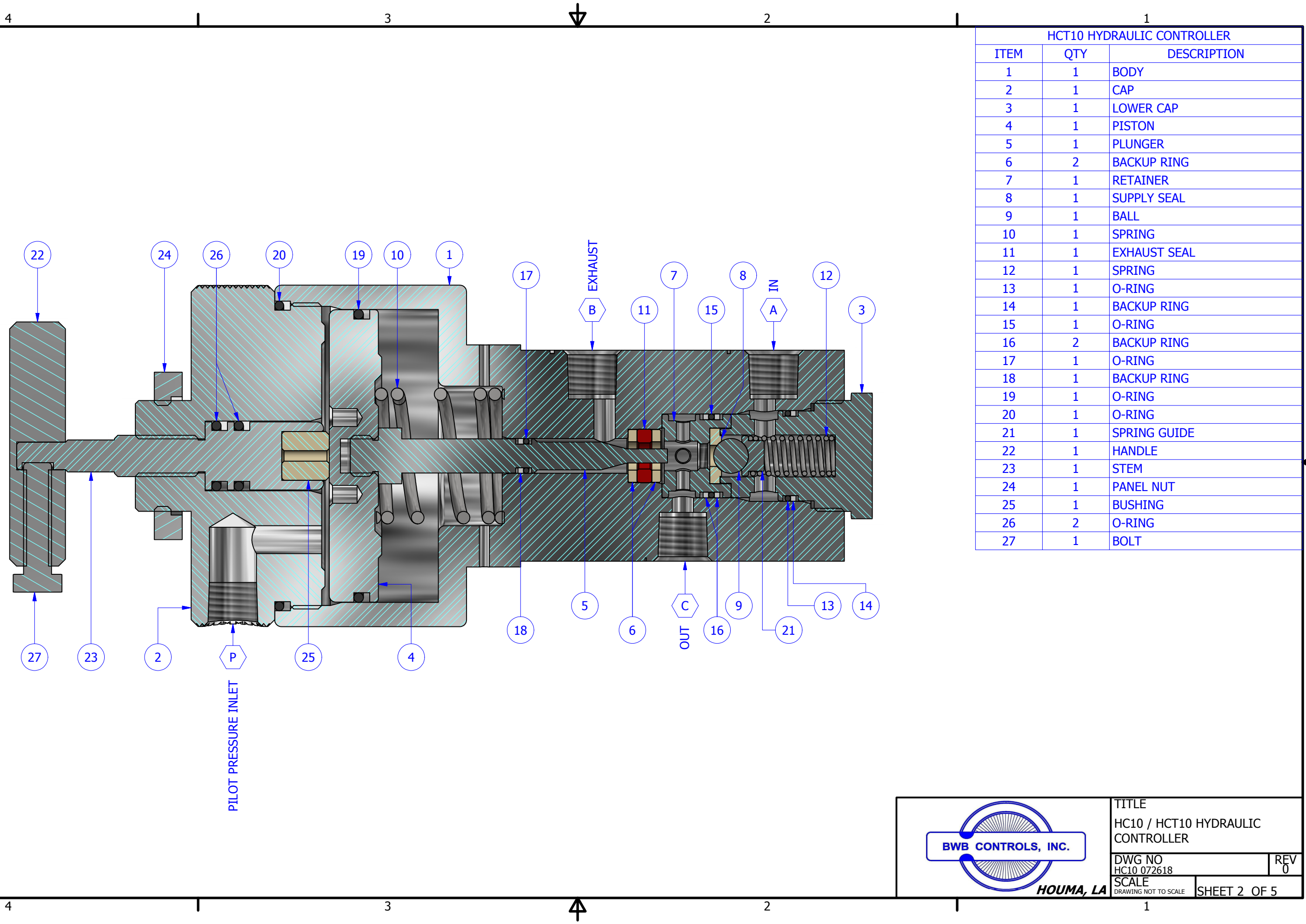
NOTE: NOT COMPATIBLE WITH OCEANIC TYPE WATER/GLYCOL FLUIDS.

HC10 HYDRAULIC CONTROLLER

ITEM	QTY	DESCRIPTION
1	1	BODY
2	1	CAP
3	1	LOWER CAP
4	1	PISTON
5	1	PLUNGER
6	2	BACKUP RING
7	1	RETAINER
8	1	SUPPLY SEAL
9	1	BALL
10	1	SPRING
11	1	EXHAUST SEAL
12	1	SPRING
13	1	O-RING
14	1	BACKUP RING
15	1	O-RING
16	2	BACKUP RING
17	1	O-RING
18	1	BACKUP RING
19	1	O-RING
20	1	O-RING
21	1	SPRING GUIDE



TITLE HC10 / HCT10 HYDRAULIC CONTROLLER		
DWG NO HC10 072618	REV 0	
SCALE DRAWING NOT TO SCALE	SHEET 1 OF 5	



HCT10 HYDRAULIC CONTROLLER		
ITEM	QTY	DESCRIPTION
1	1	BODY
2	1	CAP
3	1	LOWER CAP
4	1	PISTON
5	1	PLUNGER
6	2	BACKUP RING
7	1	RETAINER
8	1	SUPPLY SEAL
9	1	BALL
10	1	SPRING
11	1	EXHAUST SEAL
12	1	SPRING
13	1	O-RING
14	1	BACKUP RING
15	1	O-RING
16	2	BACKUP RING
17	1	O-RING
18	1	BACKUP RING
19	1	O-RING
20	1	O-RING
21	1	SPRING GUIDE
22	1	HANDLE
23	1	STEM
24	1	PANEL NUT
25	1	BUSHING
26	2	O-RING
27	1	BOLT



HOUMA, LA

TITLE  
HC10 / HCT10 HYDRAULIC  
CONTROLLER

DWG NO  
HC10 072618

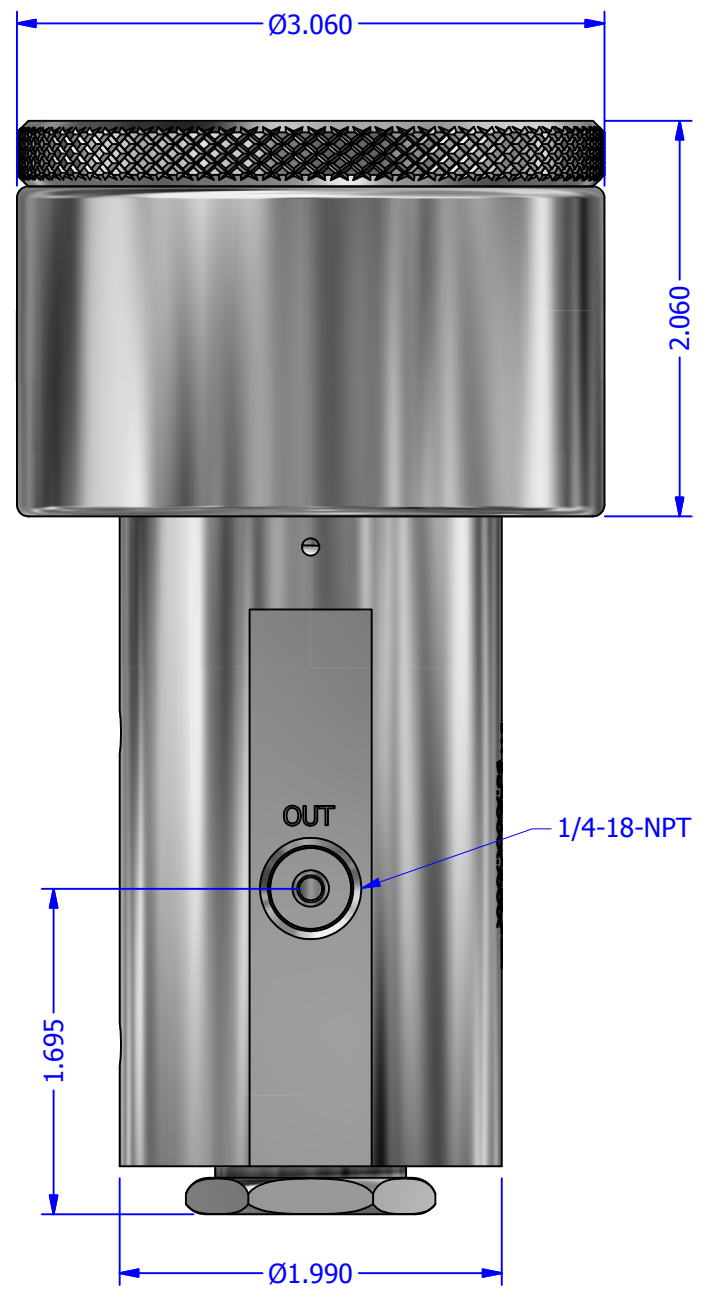
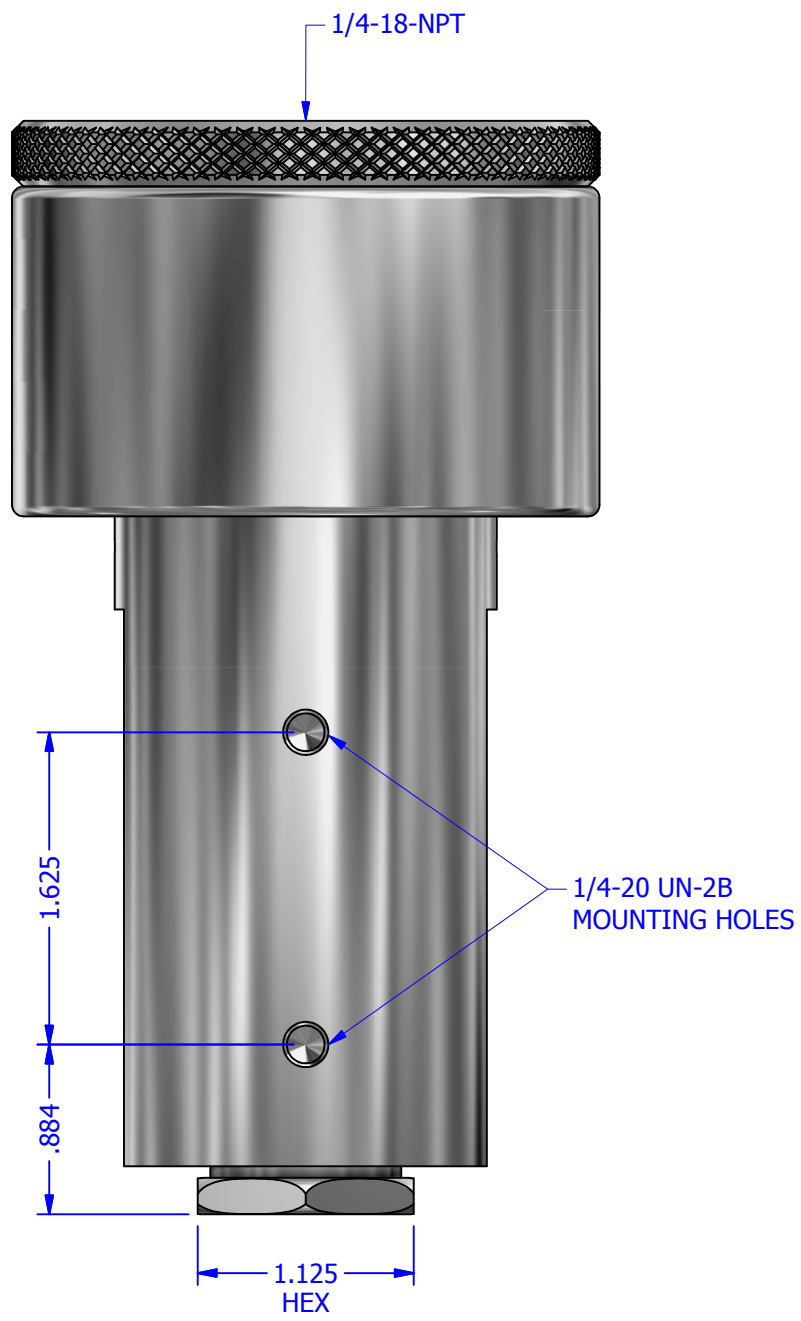
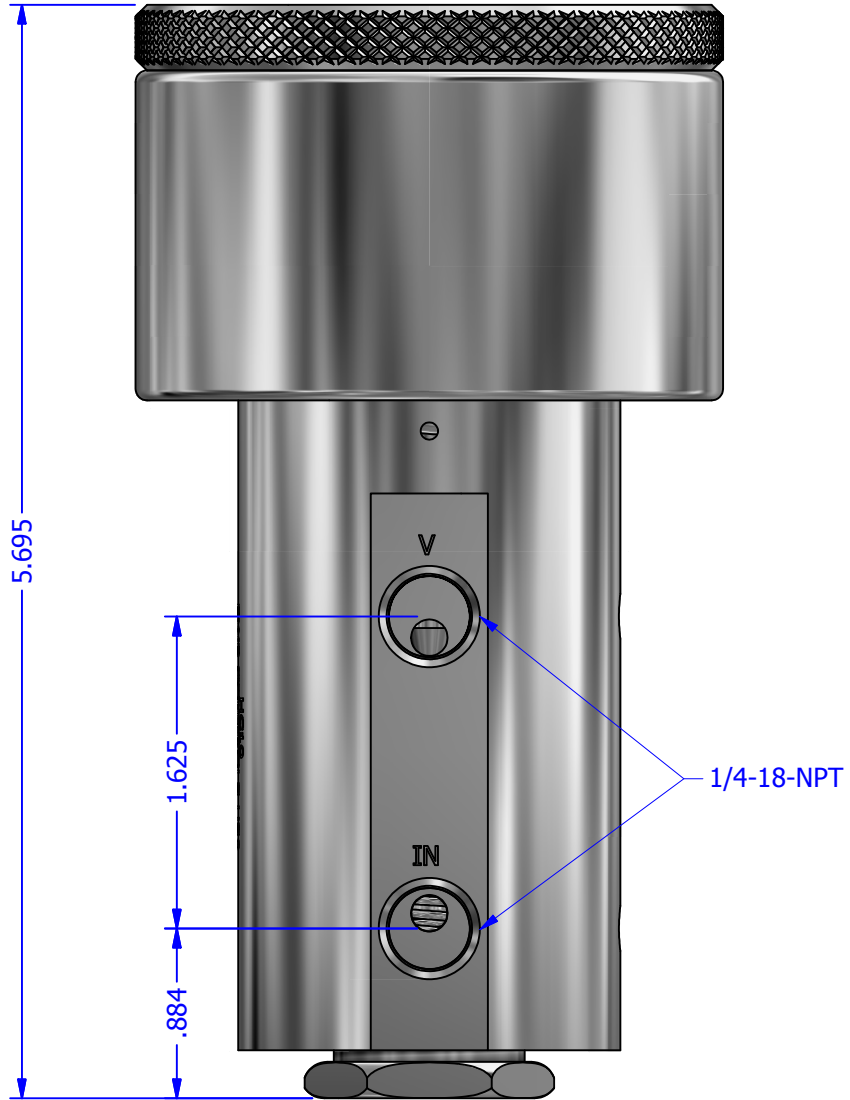
REV  
0

SCALE  
DRAWING NOT TO SCALE

SHEET 2 OF 5

HC10 HYDRAULIC CONTROLLER  
(NO MANUAL OVERRIDE)  
WEIGHT: 7.75 LBS.

B  
A



B  
A



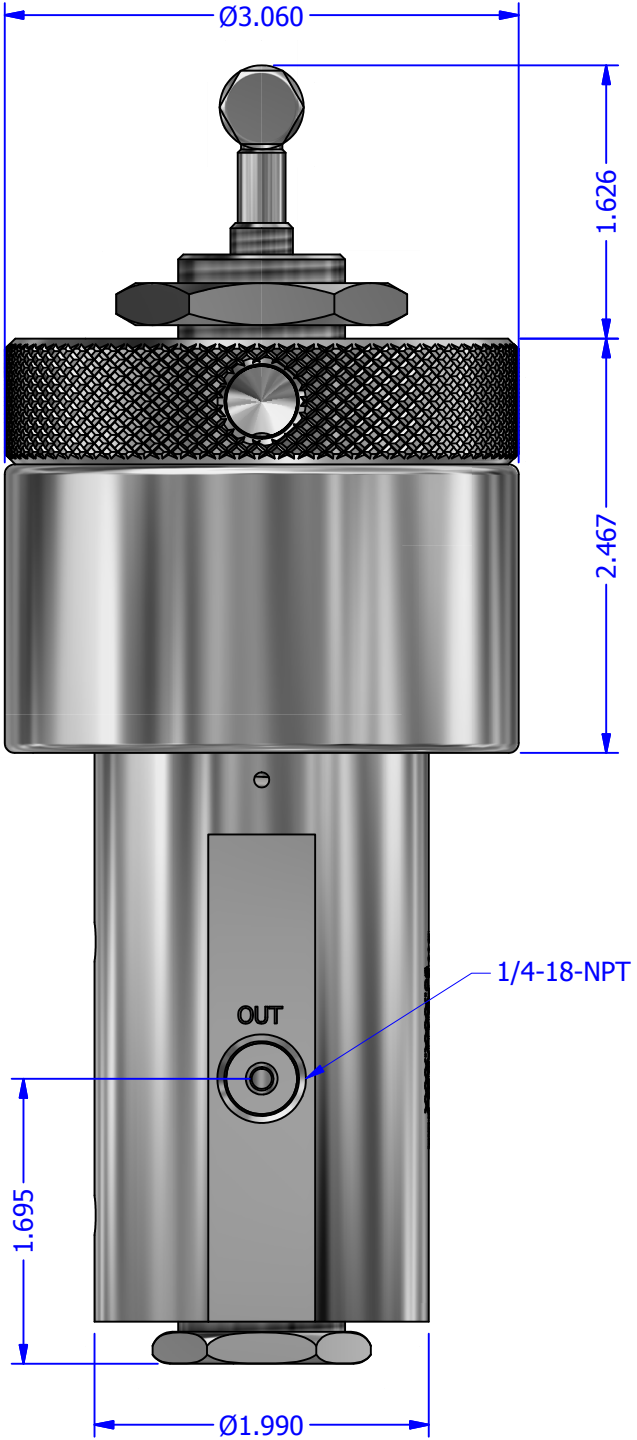
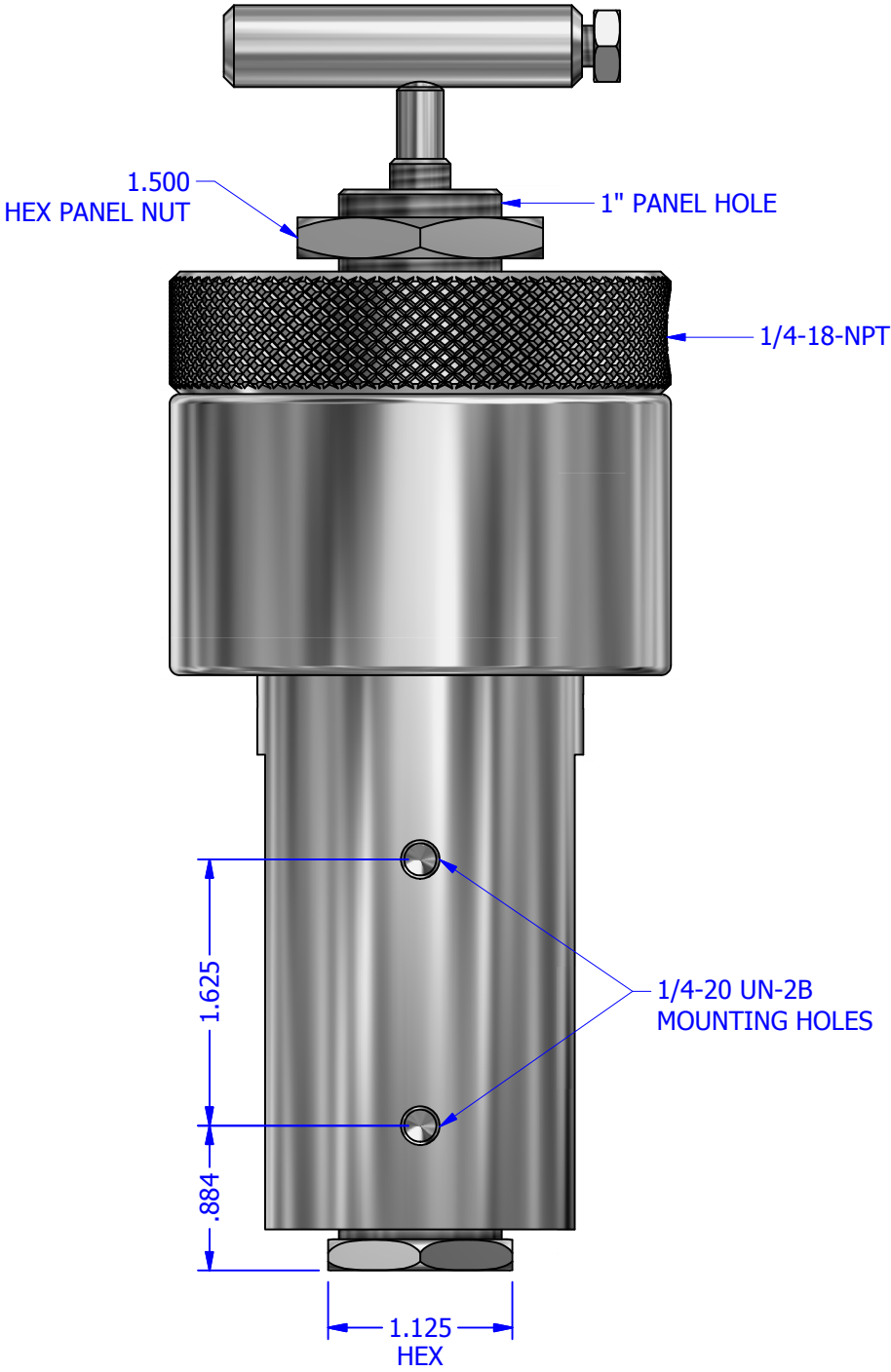
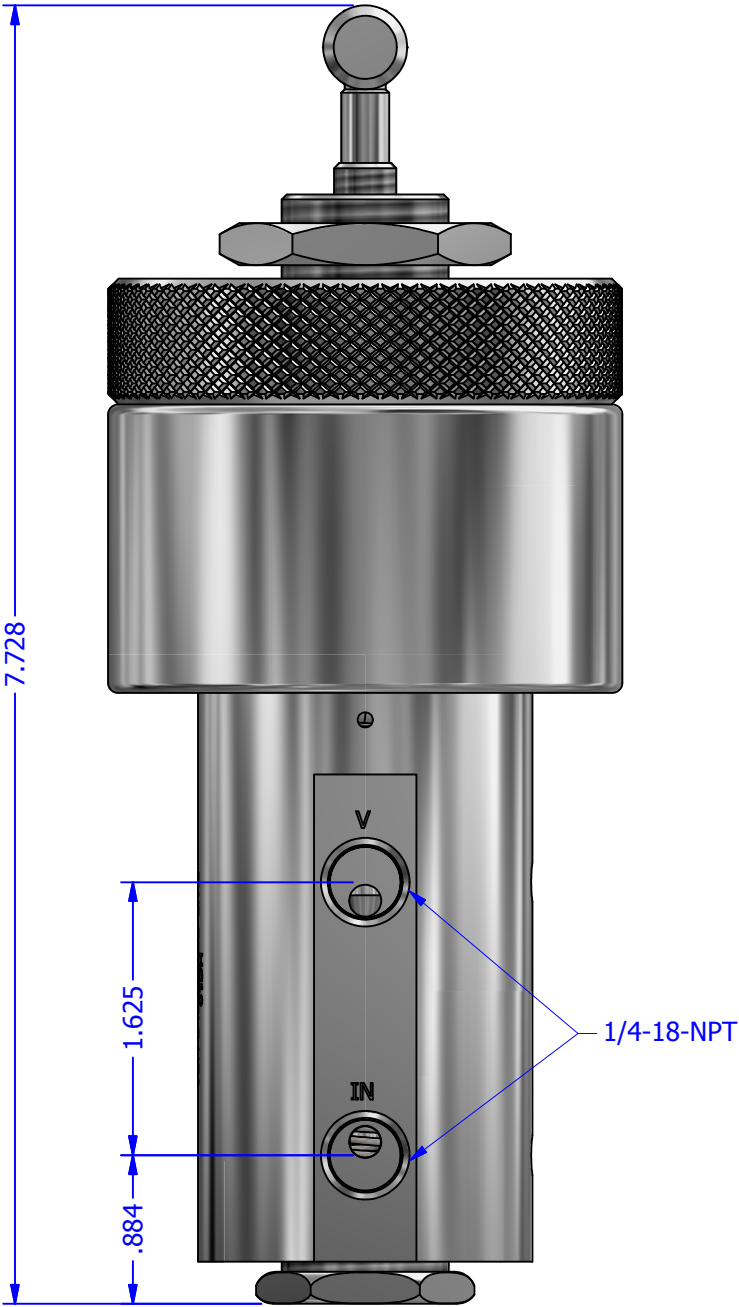
TITLE HC10 / HCT10 HYDRAULIC CONTROLLER	
DWG NO HC10 072618	REV 0
SCALE DRAWING NOT TO SCALE	SHEET 3 OF 5

HOUMA, LA



HCT10 HYDRAULIC CONTROLLER  
(WITH MANUAL OVERRIDE)

WEIGHT: 8.25 LBS.



HOUMA, LA

TITLE  
HC10 / HCT10 HYDRAULIC  
CONTROLLER

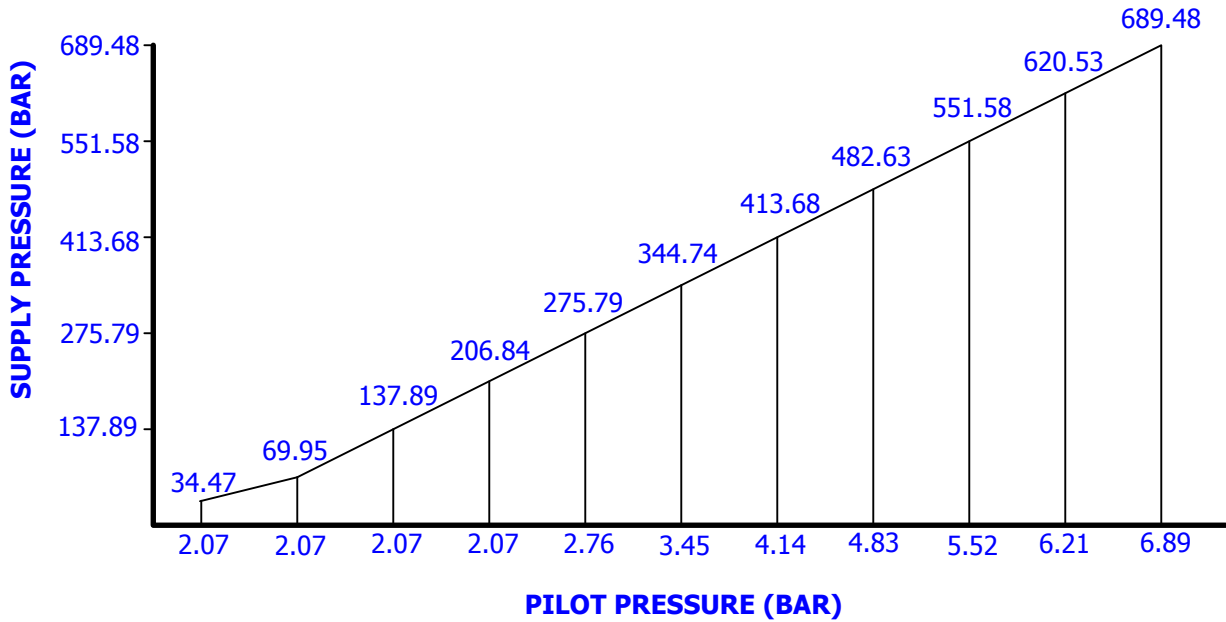
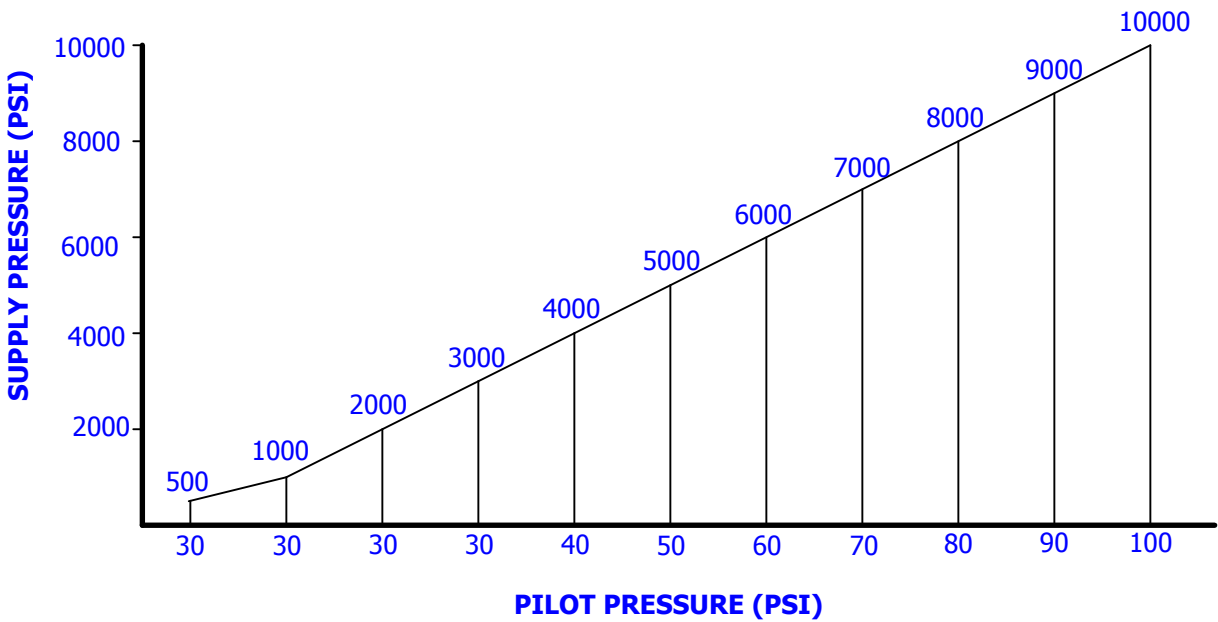
DWG NO  
HC10 072618

SCALE  
DRAWING NOT TO SCALE

REV  
0

SHEET 4 OF 5

PILOT PRESSURE / SUPPLY PRESSURE



HOUMA, LA

TITLE	
HC10 / HCT10 HYDRAULIC CONTROLLER	
DWG NO HC10 072618	REV 0
SCALE DRAWING NOT TO SCALE	SHEET 5 OF 5