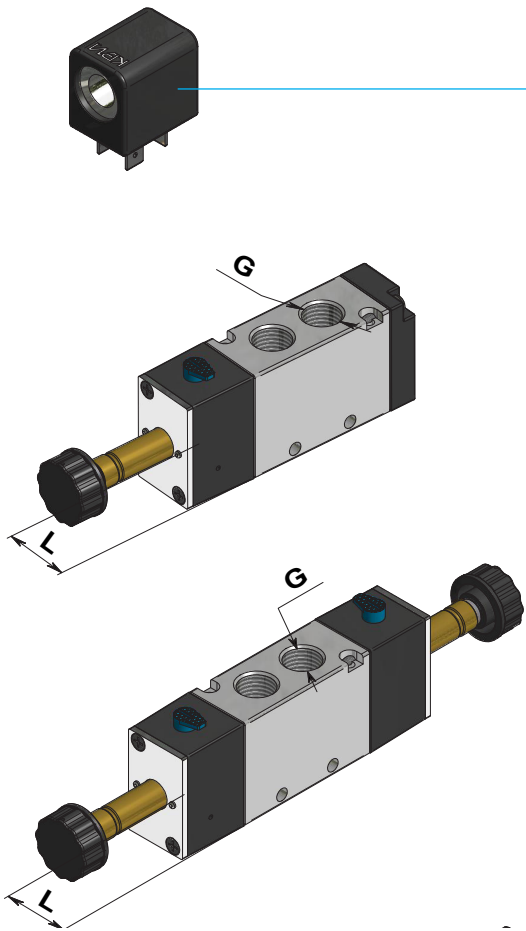


Valvole singole Single valves



VOLTAGGIO VOLTAGE	TIPO TYPE	POWER-ED	CODICE CODE	
12V	D.C.	2.2W	100%	DA005002
	D.C.	6W	100%	DA005010
	D.C.	8W	100%	BOB00010
	A.C.	2.8VA	100%	BOB00070
	A.C.	8VA	100%	DA010550
24V	D.C.	2.2W	100%	DA005150
	D.C.	3.5W	100%	DA005101
	D.C.	8 W	100%	BOB00056
	D.C.	15W	50%	BOB00015
	A.C.	2.8 VA	100%	BOB00066
	A.C.	5VA	100%	BOB00045
	A.C.	8VA	100%	DA010600
	A.C.	11VA	70%	DA01060R
115V	A.C.	5VA	100%	DA010700
	A.C.	10VA	70%	DA01080R
230V	A.C.	5VA	100%	DA012400
	A.C.	10VA	70%	DA01240R

= Funzionano solo su piloti speciali
= Work properly only with a special pilot

G	L	CODE :	CODE :
		5/2 Monostabile	5/2 Bistabile
G1/8"	22mm	EVO228M	EVO228B
G1/4"	22mm	EVO22M	EVO22B
G1/4"	27mm	EVO27M	EVO27B
G1/2"	34mm	EVO34M	EVO34B

Certificazioni Certifications



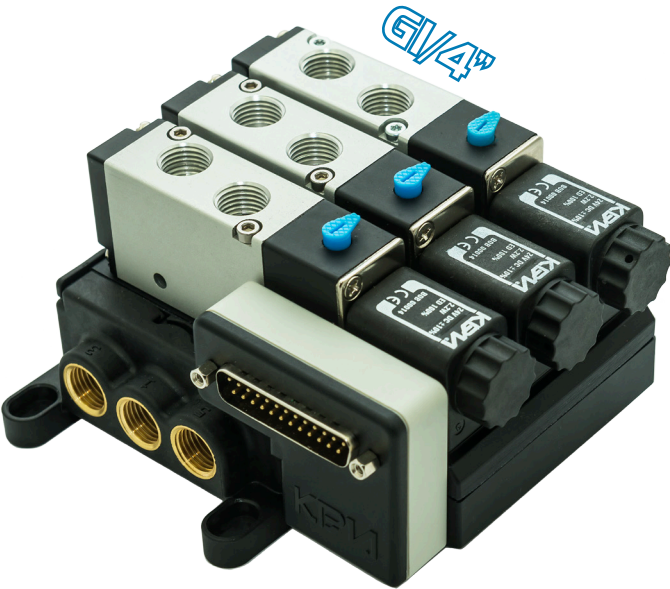
Disponibilità Availability



- AFRICA AND MIDDLE EAST
- ASIA
- EUROPE
- NORTH AMERICA
- SOUTH AMERICA



Valvole ed Elettrovalvole pneumatiche, serie EVO
Pneumatic and Solenoid Valves, EVO series



GENIUS LINE

“Nullus locus sine genio”

EVO
22+27+34mm

r06.indd 06-2017

PUB00109 DEPLIANT EVO 2016

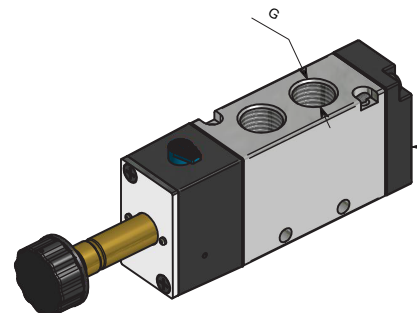



BOB00012

Solenoido - Solenoid 22mm - 24V - D.C. 3.5W

BOB00068

Solenoido - Solenoid 22mm - 24 V - A.C. 3.5VA



G1/8" = **EVO228M**

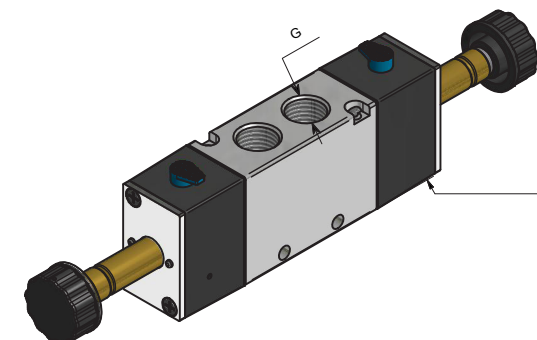
G1/4" = **EVO22M**

ELETTROVALVOLA MONOSTABILE
MONOSTABLE SOLENOID VALVE

G1/8" = **EVO228MAS**

G1/4" = **EVO22MAS**

ELETTROVALVOLA MONOSTABILE ASSERVITA
EXTERNAL SUPPLY MONOSTABLE SOLENOID VALVE



G1/8" = **EVO228B**

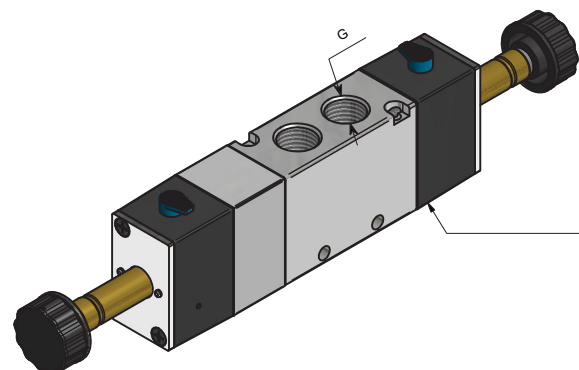
G1/4" = **EVO22B**

ELETTROVALVOLA BISTABILE
BISTABLE SOLENOID VALVE

G1/8" = **EVO228BAS**

G1/4" = **EVO22BAS**

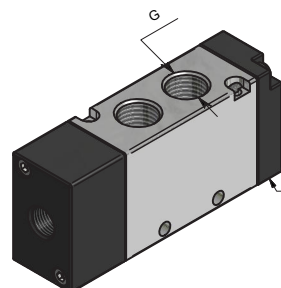
ELETTROVALVOLA BISTABILE ASSERVITA
EXTERNAL SUPPLY BISTABLE SOLENOID VALVE



G1/8" = **EVO228BCC**

G1/4" = **EVO22BCC**

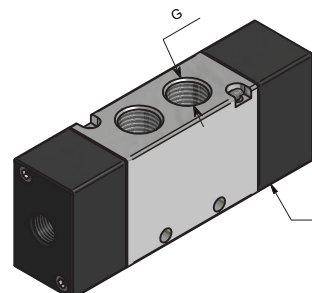
ELETTROVALVOLA BISTABILE 5/3 CENTRI CHIUSI
BISTABLE SOLENOID VALVE 5/3 CLOSURE CENTRES



G1/8" = **EVO228PM**

G1/4" = **EVO22PM**

VALVOLA MONOSTABILE
MONOSTABLE VALVE



G1/8" = **EVO228PB**

G1/4" = **EVO22PB**

VALVOLA BISTABILE
BISTABLE VALVE

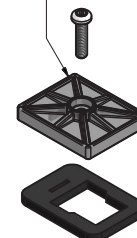
SBK00155

CHIUSURA CONTATTI ELETTRICI
ELECTRICAL PIN COVER



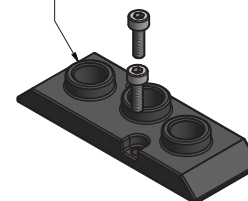
SBK00069

Coperchio Chiusura Solenoide
Solenoid Closure plate



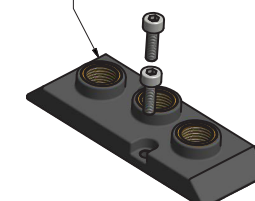
SBK00028

Piastra Chiusura
Closure plate



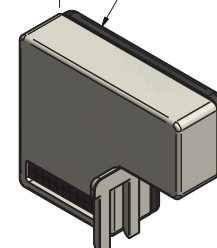
SBK00002

Piastra Prelievo 3 x G1/8"
Porting block 3 x G1/8"



SBK00399

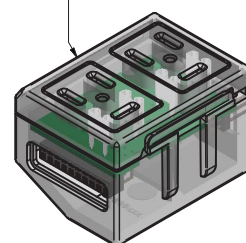
MODULO CONNESSIONE ELETTRICA
ELECTRICAL CONNECTION MODULE
DB-25 connector



D.C. = **SBK00360**

A.C. = **SBK00374**

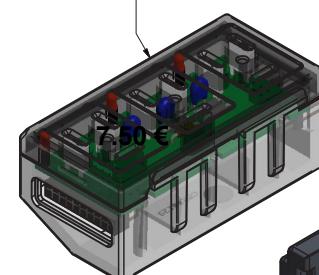
Gruppo connessione Elettrico
Group of electrical connection
x 2 valves



D.C. = **SBK00358**

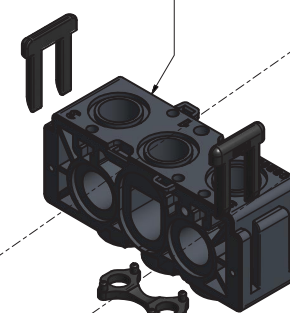
A.C. = **SBK00372**

Gruppo connessione Elettrico
Group of electrical connection
x 3 valves



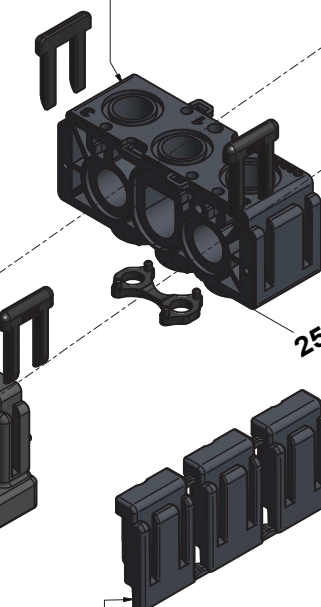
SBK00364

BASE INTERMEDIA CHIUSA
CLOSED MIDDLE BASE



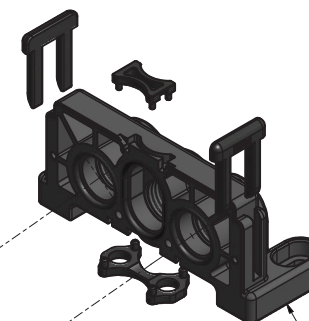
SBK00362

BASE INTERMEDIA
MIDDLE BASE



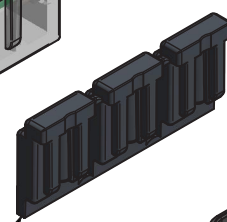
SBK00152

BASE CHIUSURA
CLOSURE BASE



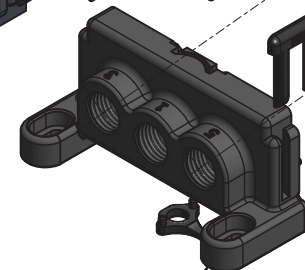
SBK00366

DISTANZIALE UNIVERSALE



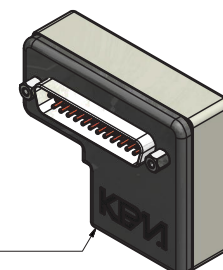
SBK00151

SOTTOBASE ENTRATA
INLET BASE



SBK00366

DISTANZIALE UNIVERSALE



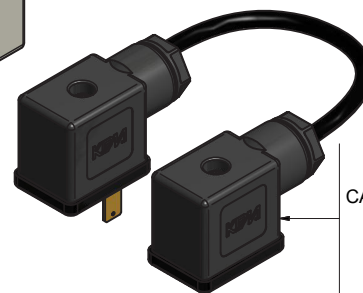
SBK00399

MODULO CONNESSIONE ELETTRICA
ELECTRICAL CONNECTION MODULE
DB-25 connector



SBK00368

CAVO INTESTATO per 5/3 F+M
5/3 Valves PLUG PIN F+M



CAVI INTESTATI 25 PIN F+M
SERIAL PLUG 25 PIN F+M

1.80 m = **CNT00073**

3 m = **CNT00084**

5 m = **CNT00083**

