



---

# Customer information packet

## EM31108

.5HP, 1725RPM, 3PH, 60HZ, 56, 3424M, ODP, F1, N

Class - None

Division - Not Applicable

## Specifications

Enclosure	ODP
Frame	56
Frame Material	Steel
Frequency	60.00 Hz
Motor Letter Type	Three Phase
Output @ Frequency	.500 HP @ 60 HZ
Phase	3
Synchronous Speed @ Frequency	1800 RPM @ 60 HZ
Voltage @ Frequency	230.0 V @ 60 HZ 460.0 V @ 60 HZ
XP Class and Group	None
XP Division	Not Applicable
Agency Approvals	CURUSEEV
Ambient Temperature	40 °C
Auxillary Box	No Auxillary Box
Auxillary Box Lead Termination	None
Base Indicator	Rigid
Bearing Grease Type	Polyrex EM (-20F +300F)
Blower	None
Current @ Voltage	.800 A @ 460.0 V 1.600 A @ 230.0 V 2.100 A @ 208.0 V
Design Code	B
Drip Cover	No Drip Cover
Duty Rating	CONT
Efficiency @ 100% Load	78.2 %
Electrically Isolated Bearing	Not Electrically Isolated
Feedback Device	NO FEEDBACK
Front Face Code	Standard
Front Shaft Indicator	None
Heater Indicator	No Heater
High Voltage Full Load Amps	0.8 a

## Part detail

Revision	E
Type	AC
Mech. spec.	34B061
Base	
Status	PRD/A
Elec. spec.	34WGX110
Layout	34LYB061
Eff. date	04-22-2021
CD Diagram	CD0005
Poles	04
Leads	9#18
Proprietary	False
Created date	02-26-2014

Insulation Class	F
Inverter Code	Not Inverter
KVA Code	J
Lifting Lugs	No Lifting Lugs
Locked Bearing Indicator	No Locked Bearing
Motor Lead Exit	Ko Box
Motor Lead Quantity/Wire Size	9 @ 18 AWG
Motor Lead Termination	Flying Leads
Motor Standards	NEMA
Motor Type	3424M
Mounting Arrangement	F1
Number of Poles	4
Overall Length	11.75 IN
Power Factor	78
Product Family	General Purpose
Pulley End Bearing Type	Ball
Pulley Face Code	Standard
Pulley Shaft Indicator	Standard
Rodent Screen	None
RoHS Status	ROHS COMPLIANT
Service Factor	1.25
Shaft Diameter	0.625 IN
Shaft Extension Location	Pulley End
Shaft Ground Indicator	No Shaft Grounding
Shaft Rotation	Reversible
Shaft Slinger Indicator	No Slinger
Speed	1725 rpm
Speed Code	Single Speed
Starting Method	Direct on line
Thermal Device - Bearing	None
Thermal Device - Winding	None
Vibration Sensor Indicator	No Vibration Sensor
Winding Thermal 1	None
Winding Thermal 2	None

## Nameplate

NP3155L											
CAT.NO.	EM31108										
SPEC.	34B061X110G1										
HP	.5										
VOLTS	230/460										
AMP	1.6/.8										
RPM	1725										
FRAME	56		HZ	60			PH	3			
SER.F.	1.25	CODE	J	DES	B	CL	F				
F.L. AVG. EFF.	78.2	PF	78								
RATING	40C AMB-CONT										
CC			USABLE AT 208V						N/A		
DE	6203		ODE	6203							
ENCL	ODP	SN									
	SFA 2/1										

## AC Induction Motor Performance Data

Record # 44885

Typical performance - not guaranteed values

Winding: 34WGX110-R010				Type: 3424M		Enclosure: OPEN	
Nameplate Data				460 V, 60 Hz: High Voltage Connection			
Rated Output (HP)		.5		Full Load Torque		1.57 LB-FT	
Volts		230/460		Start Configuration		direct on line	
Full Load Amps		1.6/.8		Breakdown Torque		5.24 LB-FT	
R.P.M.		1725		Pull-up Torque		3.8 LB-FT	
Hz		60		Phase		3	
NEMA Design Code		B		KVA Code		J	
Service Factor (S.F.)		1.25		No-load Current		0.474 A	
NEMA Nom. Eff.		78.2		Power Factor		78	
Rating - Duty		40C		AMB-CONT		Temp. Rise @ Rated Load	
S.F. Amps		1.8/.9		Temp. Rise @ S.F. Load		34°C	
				Locked-rotor Power Factor		53	
				Rotor inertia		0.0572 LB-FT2	

## Load Characteristics 460 V, 60 Hz, 0.5 HP

% of Rated Load	25	50	75	100	125	150	S.F.
Power Factor	38	55	68	76	80	83	80
Efficiency	67.3	76.6	78.9	78.7	77.2	74.9	77.2
Speed	1782.6	1766.4	1749.5	1729.5	1707.4	1683.2	1707
Line amperes	0.509	0.586	0.687	0.815	0.971	1.14	0.971

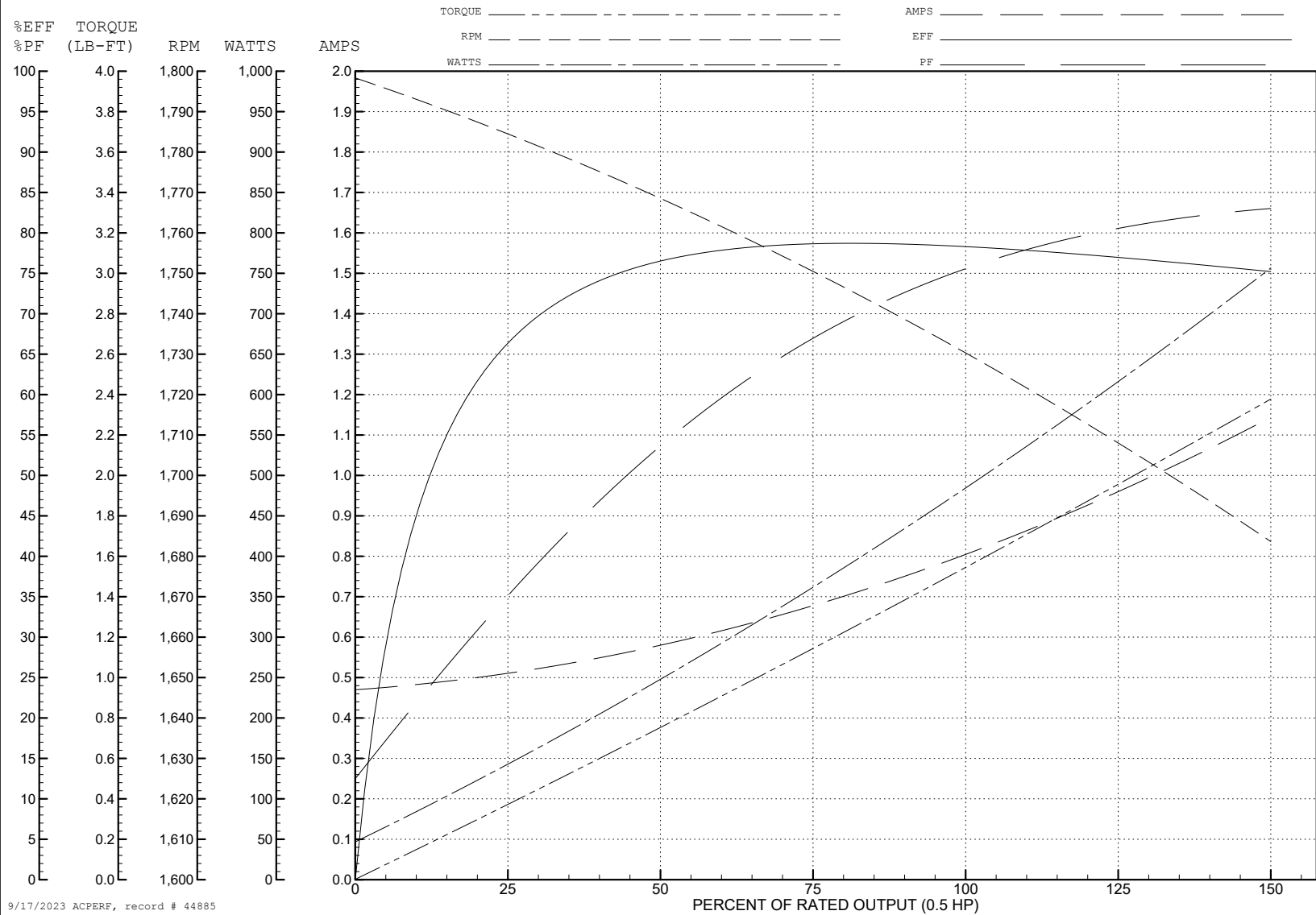
ABB Motors and Mechanical Inc.

WINDING # 34WGX110

Typical performance - not guaranteed values.

0.5 HP 3 PH 60 HZ 1725 RPM 460 V 3424M

TORQUES (LB-FT): PO=5.24 PU=3.8 LR=5.12 LRA=6.16



## AC Induction Motor Performance Data

Record # 49389

Typical performance - not guaranteed values

Winding: 34WGX110-R010			Type: 3424M		Enclosure: OPEN	
Nameplate Data			230 V, 60 Hz: Low Voltage Connection			
Rated Output (HP)		.5	Full Load Torque		1.57 LB-FT	
Volts		230/460	Start Configuration		direct on line	
Full Load Amps		1.6/.8	Breakdown Torque		5.24 LB-FT	
R.P.M.		1725	Pull-up Torque		3.8 LB-FT	
Hz		60	Phase		3	
NEMA Design Code		B	KVA Code		J	
Service Factor (S.F.)		1.25	No-load Current		0.948 A	
NEMA Nom. Eff.		78.2	Power Factor		78	
Rating - Duty		40C	AMB-CONT		Temp. Rise @ Rated Load	
S.F. Amps		2/1	Temp. Rise @ S.F. Load		31°C	
			Locked-rotor Power Factor		52.9	
			Rotor inertia		0.0572 LB-FT2	

## Load Characteristics 230 V, 60 Hz, 0.5 HP

% of Rated Load	25	50	75	100	125	150	S.F.
Power Factor	37	56	68	76	80	83	80
Efficiency	67.5	76.4	78.6	78.6	77.1	75.1	77.1
Speed	1783	1766	1750	1730	1707	1683	1707
Line amperes	1.02	1.17	1.37	1.63	1.94	2.28	1.94

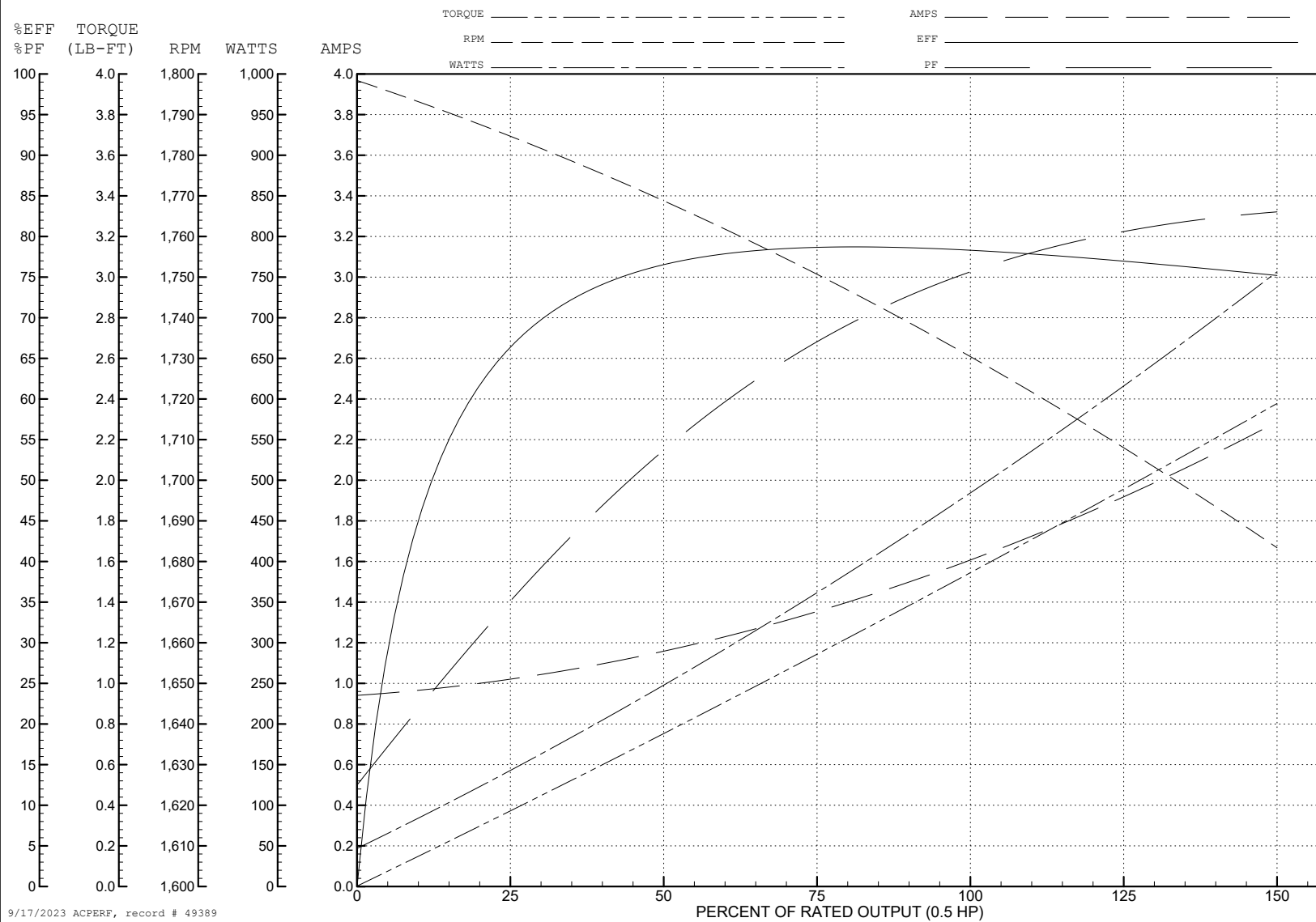
ABB Motors and Mechanical Inc.

WINDING # 34WGX110

Typical performance - not guaranteed values.

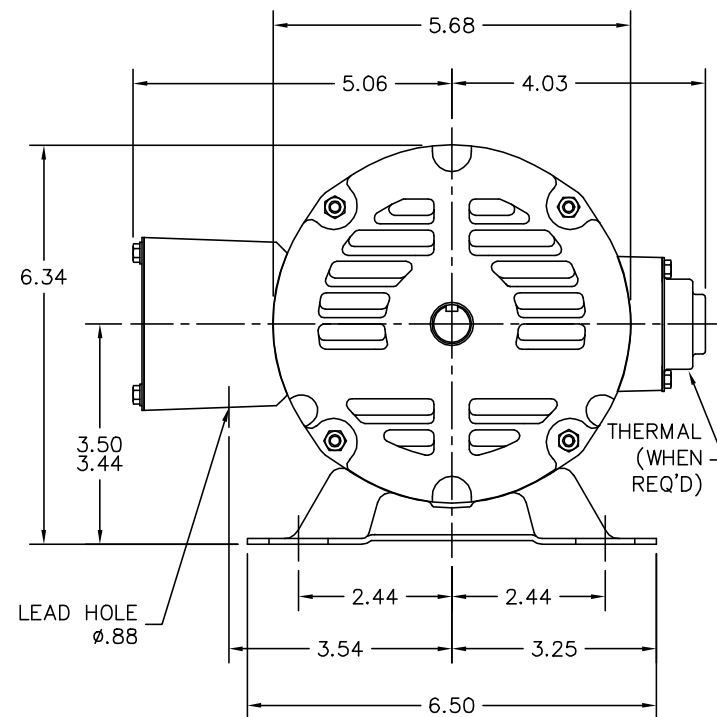
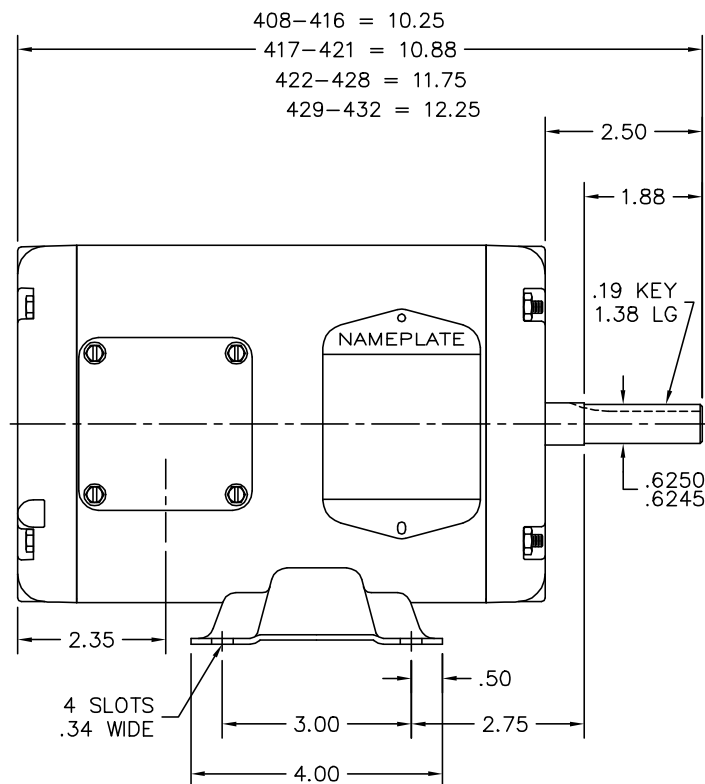
0.5 HP 3 PH 60 HZ 1725 RPM 230 V 3424M

TORQUES (LB-FT): PO=5.24 PU=3.8 LR=5.12 LRA=12.3





34LYB061



CUSTOMER IS RESPONSIBLE FOR DETERMINING THAT BALDOR'S PRODUCT WILL PERFORM SUITABLY IN THE INTENDED APPLICATION.

REV. DESC: REV TO FREEZE SECTION VIEW OF KOBX IN RIGHT VIEW

REV. LTR: D

VERSION: 02

TDR: 000000939068

FILE: \AAA\00034\110

REVISED: 10:09:16 08/14/2015

BY: ENBENBO

MTL: -



**BALDOR**

STD HORZ MODEL 34M NEMA 56 OPEN

SH 1 of 1

34LYB061

