

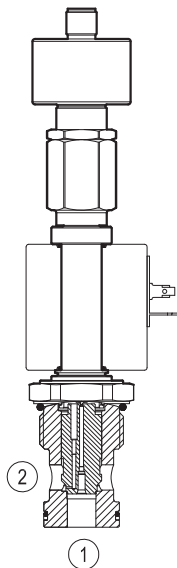
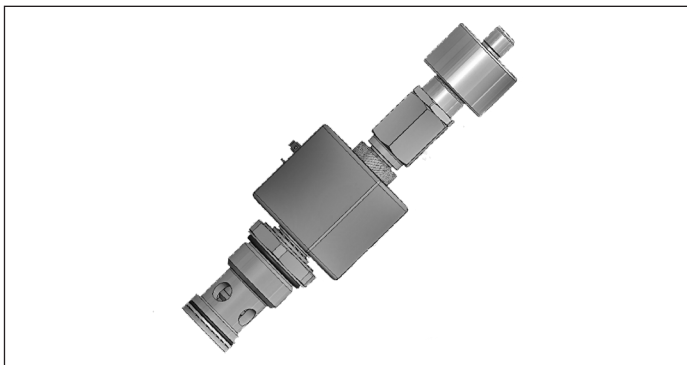
Solenoid operated valves pilot operated poppet type 2-way normally closed proximity sensor with overlapping Special cavity, 021-E

VESP-16G-16A/00-2A-N7

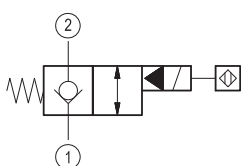
OD.15.05.21.65 - Y - Z

RE 18325-05

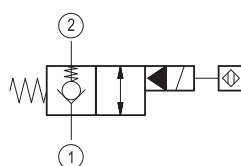
Edition: 10.2020



▼ Version 04



▼ Version 84



Technical data

General		
Weight		0.9 kg (2 lbs)
Installation orientation		Optional
Ambient temperature range		-25 to 60 °C (-13 to 140 °F)
Hydraulic		
Max. operating pressure		350 bar (5000 psi)
Flow range		5 - 150 l/min (1 - 40 gpm)
Max. internal leakage ¹⁾		20 drops/min.
Fluid temperature range		-20 to 80 °C (-4 to 176 °F)
Fluids: Mineral-based or synthetics with lubricating properties at viscosities of 15 to 380 mm²/s (cSt)		
Installation torque		80 - 100 Nm (59 - 74 ft-lbs)
Recommended degree of fluid contamination		Nominal value max. 10 µm (NAS 8) ISO 4406 19/17/14
MTTFD		150 years see RE 18350-51
DC		99% * according to ISO 13849-1/2
Special cavity		021-E see 18325-75
Lines bodies and standard assemblies		Please refer to section “Hydraulic integrated circuit” or consult factory
Seal kit	code material no.	RG21E201052010 R934003566
Other technical data		See data sheet 18350-50
Electrical		
Type of voltage		DC voltage
Coil type		S7 see 18325-90
Supply voltage		See data sheet 18325-90
Nominal voltage		± 10%
Power consumption		30 W
Duty cycle coil		100 % see 18325-90
Type of protection		See data sheet 18325-90

¹⁾ (cSt 46)

Please consider that a proper function of the valve is guaranteed only if the position of the monitor is not modified; each cartridge is provided of a torque confirmation mark, intended as anti-tampering device.

Sensor is protected against short circuit polarity inversion.

* For more details contact factory

Ordering code

OD.15	05	21	65	Y	Z
--------------	-----------	-----------	-----------	----------	----------

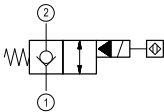
Solenoid operated valves
pilot operated poppet type
2-way normally closed proximity sensor with overlapping

OB 12 V DC for Y=84

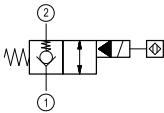
OC 24 V DC for Y=04 or 84

Note: please consult factory for
different voltages.

04



84



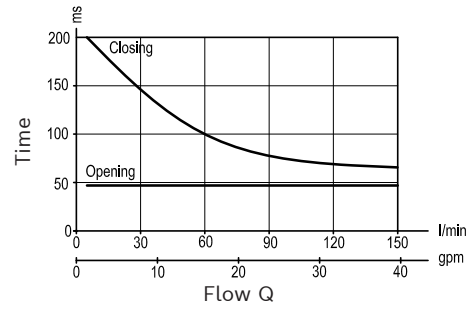
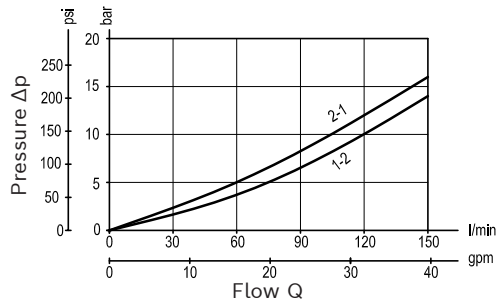
Special cavity: 021-E

Type	Material number
OD1505216504OC	R934004627
OD1505216584OC	R934004628

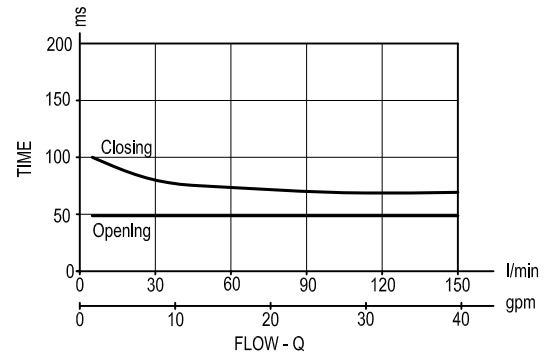
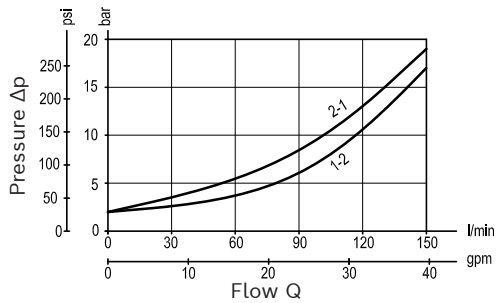
Type	Material number

Characteristic curves

Version 04

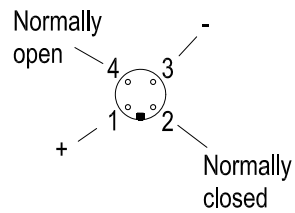
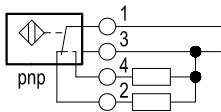


Version 84



Sensor data:

	12 V DC	24 V DC
Supply voltage	10.5 to 16	20 to 32
Output load	≤ 400 mA	≤ 400 mA



Dimensions**▼ Version 04-84: Solenoid operated valve, poppet 2-way
normally closed proximity sensor**