

Amphenol®



Micro Bayonet Connector
Micro-B™

Company Introduction



Amphenol Industrial Products Group

The Amphenol Industrial Products Group (AIPG), a division of the Amphenol Corporation, is a prominent manufacturer of cylindrical connectors known around the world. Amphenol Industrial's product lines consist of rectangular, standard miniature, fiber optic, EMI/EMP filter, and a variety of special application connectors.

Manufacturing connectors since 1932, we take pride that the Amphenol Industrial Products Group is the undisputed leader in interconnect systems for harsh environment applications. Innovations like our RADSOK® contact technology can provide roughly 50% more current through the same size pin. Connectors utilizing this RADSOK® technology will outperform similar products in the market hands down.

The Sidney, NY facility, nestled at the foothills of the Catskill Mountains, is over 307,000 square feet (28,521m²). This complex houses over 1,000+ employees incorporating state-of-the-art manufacturing technologies. The facility is both ISO9001 certified and qualified to MIL-STD-790 requirements.



Amphenol Technology (Zhuhai)

Established in 2007, Amphenol Technology (Zhuhai) Co., Ltd. is a manufacturing facility for the Amphenol Industrial Products Group, which serves a number of industrial markets, included but not limited to Factory Automation, Transportation, Heavy Equipment, Alternative Energy, Oil & Gas, Server/Data Comm and Power Distribution.

Amphenol Technology (Zhuhai) Co., Ltd. covers an area of 306,449 square feet (28,470m²) and is equipped with CNCs, plating, injection molding and assembly workshops. This plant specializes in the design and manufacturing of industrial connectors featuring high power, high density inserts, medium to high voltage electrical properties, and harsh environment applications.

Many of the products produced here have been certified by independent standards including UL, IEC/TUV, ATEX, IECEx and MA. The facility is also certified to ISO 9001, ISO 14001 and TS16949.

Table of Contents

Micro-B Product Introduction	2
Market Application	3
Technical Specifications	4
Insert Arrangements	5
Keying	5
Shell Styles	6
Shell Dimensions	7
How to Order	8
Contacts	9
Accessories	10
Tools	12
Crimp Instructions	13
Cable Assembly Instructions	14

Micro-B™ Product Introduction

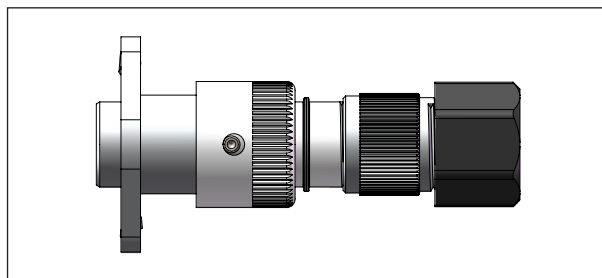


Amphenol Industrial offers a high performance circular connector product range developed for industrial applications where electrical performance must be met with affordability. High mating cycles along with excellent shell-to-shell electrical bonding for EMI are the benchmark of rugged connectors. Amphenol's new Micro-Bayonet series provides the solution that meets your budget and performance goals.

Made from an aluminum shell, Micro-B utilizes a robust triple bayonet coupling (1/4 turn mating) mechanism and stamped & formed contacts. An internal EMI grounding spring is used to provide exceptional shell-to-shell conductivity. Various mounting options are available including in-line and 2-hole flange mount configurations.

Micro-B meets the requirements of today's electrical equipment for a connector with a small footprint, light in weight, high density insert patterns, exceptional shell-to-shell electrical EMI shielding, and high reliability.

Micro-B meets all RoHS requirements. With Gray ZnNi Plating, Micro-B can withstand up to 500 hours salt spray without corrosion detrimental to its operation.



Features and Benefits

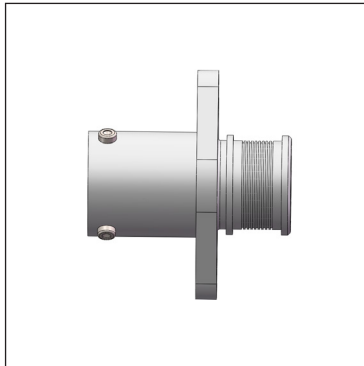
- Aluminum shell construction provides high strength while being light in weight
- Stamped and formed crimp contacts, easy for cable assembly
- 1/4 turn positive bayonet coupling, quick coupling
- Multiple shell plating options (up to 500H salt spray protection)
- Excellent shell-to-shell EMI shielding
- High shock and high vibration resistance
- Meets Smoke, Toxicity and Flammability Requirements
- Operating temperature range: -40°C~125°C
- Protection up to IP67 when in the mated condition with Backshell
- 5 Key/keyway mating
- EMI shielding backshell option
- High density
- Compact
- PCB Tail contact option is available
- UL certifications in process

Technical Specifications

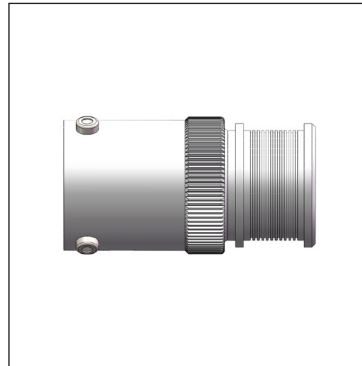
Shell Material	Aluminum	
EMI-Ring	Copper Alloy	
Retaining Ring	Stainless steel	
Wave Ring	Stainless steel	
Insert Material	Plastic (PA66)	
Contact	Material	Copper Alloy
	Plating	Tin/Gold Plated
	Termination	Crimp
Temperature Range	-40°C ~ 125°C	
Ingress Protection	With Heat Shrink, the ingress protection is IP54 in the mated condition. With Cable Gland Backshell, the ingress protection level increases to IP67 in the mated condition.	
Test Current	#22D Contact 3A	
Recommended Operating Voltage	AC 250V RMS	
Test Voltage	AC 500V RMS	
Insulation Resistance	500V, 5000MΩ Min	
Contact Resistance	22mΩ Max	
Mating Cycles	500 Cycles (30μ Gold Plated, Selective Area on Contacts)	
	300 Cycles (Tin/Gold Plating 10μ, Selective Area on Contacts)	
	100 Cycles (Gold Flash on Contacts)	
Vibration	In accordance with test procedure EIA-364-28D	
Thermal Shock	In accordance with test procedure EIA-364-32D	
Salt Spray	1. Gray ZnNi (Conductive): 500H	
	2. Electroless Nickel (Conductive): 48H	
RoHS	Compliant	

Shell Styles

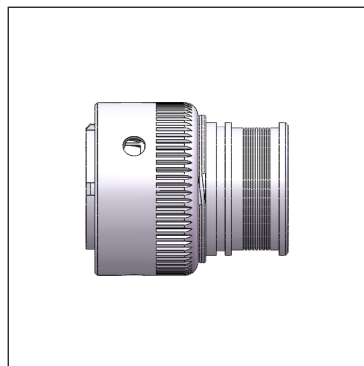
1. Heat Shrink & Band-It for EMI Shielding (Rear Accessory Compatible)



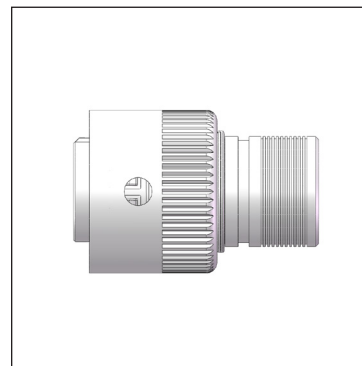
Receptacle Flange



Receptacle In-line

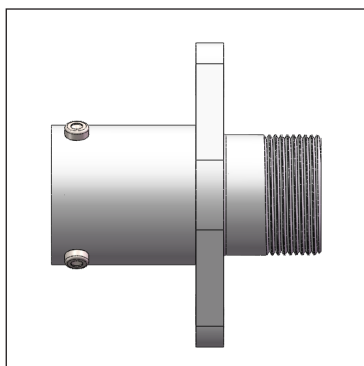


Size 10 Plug

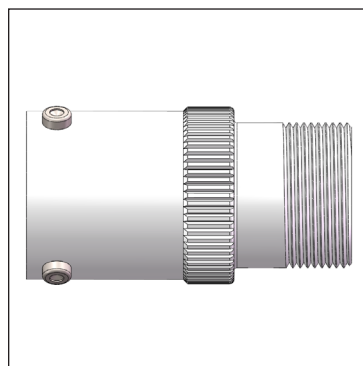


Size 8 & 9 Plug

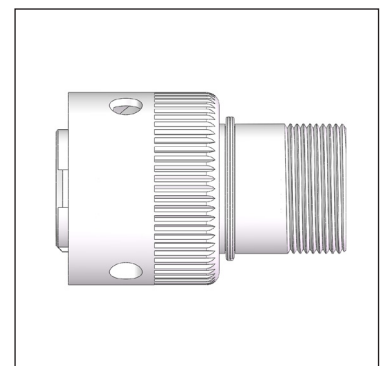
2. Cable Gland or Cable Clamp (Rear Accessory Compatible)



Receptacle Flange



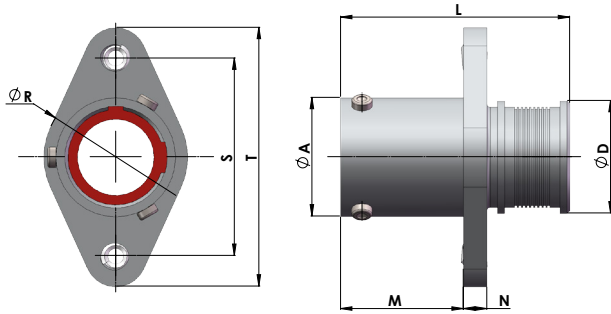
Receptacle In-line



Plug

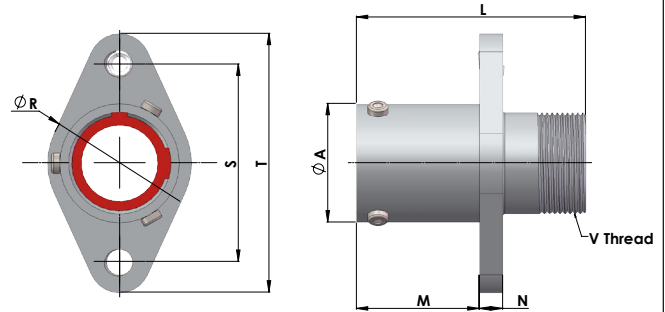
Shell Dimensions

Receptacle Flanged Heatshrink groove version



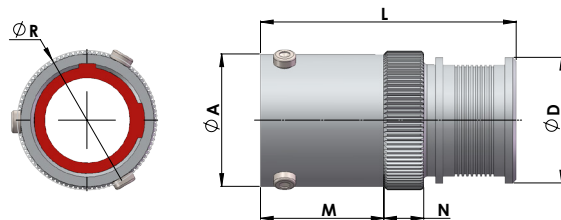
Shell Size	ØR	S ±0.05	T	ØA ±0.05	M	N	L ±0.1	ØD ±0.1
08	14	19.3	25.3	11.6	12	2.3	22.4	11
09	17.8	22	29	14.2	12	2.3	22.4	13
10	21	24.9	33.1	16.6	12	2.3	22.4	15

Receptacle Flanged Thread version



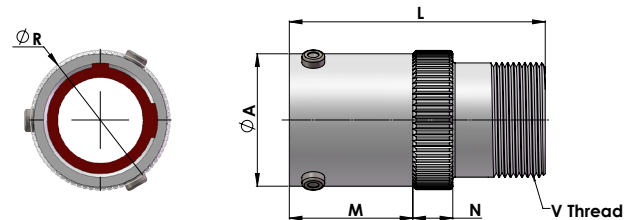
Shell Size	ØR	S ±0.05	T	ØA ±0.05	M	N	L ±0.1	V Thread
08	14	19.3	25.3	11.6	12	2.3	22.4	M10x0.5-6g
09	17.8	22	29	14.2	12	2.3	22.4	M12x0.5-6g
10	21	24.9	33.1	16.6	12	2.3	22.4	M15x1-6g

Receptacle In-line Heatshrink groove version



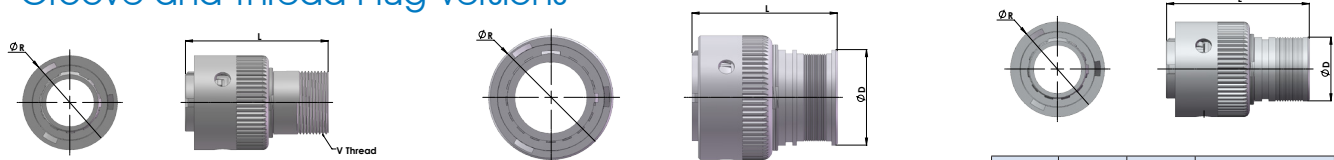
Shell Size	ØR	ØA ±0.05	M	N	L ±0.1	ØD ±0.1
08	12.2	11.6	10.8	3.5	22.4	11
09	14.8	14.2	10.8	3.5	22.4	13
10	17.2	16.6	10.8	3.5	22.4	15

Receptacle In-line Thread version



Shell Size	ØR	ØA ±0.05	M	N	L ±0.1	V Thread
08	12.2	11.6	10.8	3.5	22.4	M10x0.5-6g
09	14.8	14.2	10.8	3.5	22.4	M12x0.5-6g
10	17.2	16.6	10.8	3.5	22.4	M15x1-6g

Groove and Thread Plug Versions



Shell Size	ØR +0.13 0	ØD ±0.1	L ±0.1
08	14.8	10	22.4
09	17.2	12	22.4

Shell Size	ØR +0.13 0	ØD ±0.1	L ±0.1
10	19.5	15	22.4

Shell Size	ØR +0.13 0	L ±0.1	V Thread
08	14.8	22.4	M10x0.5-6g
09	17.2	22.4	M12x0.5-6g
10	19.5	22.4	M15x1-6g

How to Order

1	2	3	4	5	6	7
Series	Shell Style	Service Class	Insert Arrangement	Contacts	Keying	Options
MB	06T	E	10-15	P	N	(072)

1 - Series	
MB	Designates Micro-B™

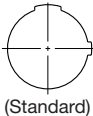
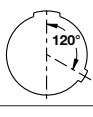
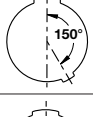
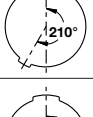

2 - Shell Style	
01T	Cable connecting receptacle with metric thread
01H	Cable connecting receptacle with Heat Shrink Tubing grooves
03T	2 Hole flanged receptacle with metric thread
03H	2 Hole flanged receptacle with Heat Shrink Tubing grooves
06T	Straight plug with metric thread
06H	Straight plug with Heat Shrink Tubing grooves
03	2 Hole flanged receptacle with no grooves and no thread

3 - Class	
A	Non-Environmental
E	Environmental

4 - Insert Arrangements
Refer to page 5 for insert availability. "10-15" designates insert arrangement.

5 - Contacts	
P	Pin Crimp (S&F)
S	Stamped & Formed pin contacts, order separately and packaged by reel, see page 9
A	Machined pin contacts, packaged with connector
B	Machined socket contacts, packaged with connector
C	Pin PC tail contacts pre-loaded in connector
D	Socket PC tail contacts pre-loaded in connector

6 - Keying (See Alternate Keying, page 5)

N	 (Standard)
A	
B	
C	
D	

7 - Options	
(072)	Gray ZnNi
(023)	Electroless Nickel
(424)	Electroless Nickel finish with cable clamp
(425)	Electroless Nickel finish with cable gland
(574)	Gray ZnNi finish with cable clamp
(575)	Gray ZnNi finish with cable gland



Example: **MB 06T E 10-15 PN (425)** equals a Straight Plug with Cable Gland, Electroless Nickel plating, Stamped & Formed Pin contacts, N keyway.

By including a cable gland this part number can achieve IP67 in the mated condition, as an E service class.

Notice: Specifications are subject to change without notice. Contact your nearest Amphenol Corporation Sales Office for the latest specifications. All statements, information and data given herein are believed to be accurate and reliable but are presented without guarantee, warranty, or responsibility of any kind, expressed or implied. Statements of suggestions concerning possible use of our products are made without representation or warranty that any such use is free of patent infringement and are not recommendations to infringe and any patent. The user should assume that all safety measures are indicated or that other measures may not be required. Specifications are typical and may not apply to all connectors.

#22D Stamped & Formed Contacts

Size	Current	PIN/SOCKET	Wire		Plating	Part No	Pcs/Reel
	(A)		AWG	mm ²			
22D#	3	S & F PIN	22-26	0.14-0.30	Tin plating	C10-737688-221	3000pcs / Reel (Order Separately)
					Gold flash	C10-737688-222	
					10u" gold plating	C10-737688-223	
					30u" gold plating	C10-737688-224	
		S & F POCKET	22-26	0.14-0.30	Tin plating	C10-737689-221	
					Gold flash	C10-737689-222	
					10u" gold plating	C10-737689-223	
					30u" gold plating	C10-737689-224	
22D#	5	MACHINED PIN	22-26	0.14-0.30	Tin plating	C10-737874-221	Pcs (Packaged with Connector)
					Gold flash	C10-737874-222	
					10u" gold plating	C10-737874-223	
					30u" gold plating	C10-737874-224	
		MACHINED SOCKET	22-26	0.14-0.30	Tin plating	C10-747152-221	
					Gold flash	C10-747152-222	
					10u" gold plating	C10-747152-223	
					30u" gold plating	C10-747152-224	
22D#	5	PC TAIL MACHINED PIN	22-26	0.14-0.30	Tin plating	C10-748768-221	Pcs (Loaded in Connector)
					Gold flash	C10-748768-222	
					10u" gold plating	C10-748768-223	
					30u" gold plating	C10-748768-224	
		PC TAIL MACHINED SOCKET	22-26	0.14-0.30	Tin plating	C10-737869-221	
					Gold flash	C10-737869-222	
					10u" gold plating	C10-737869-223	
					30u" gold plating	C10-737869-224	