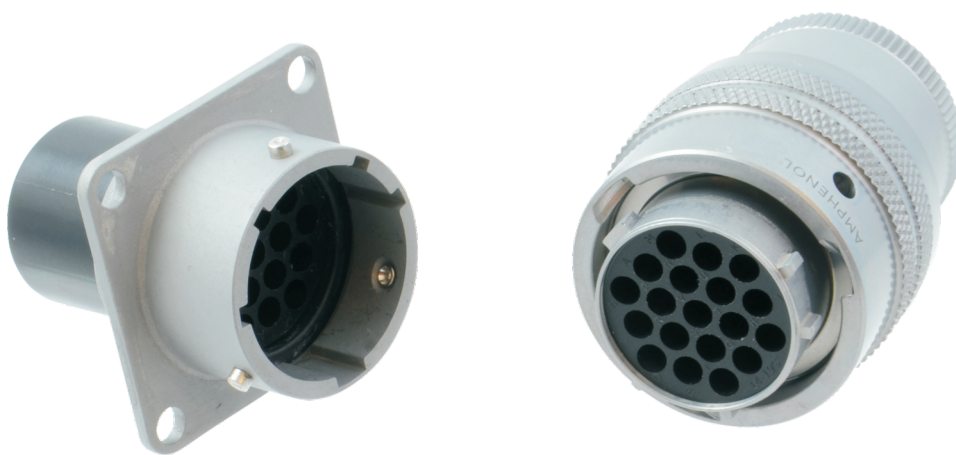


Amphenol[®]



LPT 圆形连接器系列

LPT 系列连接器产品简介



什么是LPT系列连接器？

LPT是基于军工MIL-C-26482 I系列标准和安费诺原有PT系列产品开发的，结构改进、成本更具优势的金属外壳连接器。

产品特性和优势

- 铝合金外壳兼顾轻量 and 金属机械性能
- 提供多种外壳电镀选项
- 3爪冲压压接端子
- 提供机加工端子选项
- 市场现货供应
- 快速卡口连接
- 5键位盲插
- 连接后防水等级达到IP67&IP69K
- 抗高频振动和冲击
- 工作温度范围: -40°C to 125°C
- 与安费诺PT系列产品互配
- PT 标准外壳经过了市场的长期可靠性验证
- UL、TUV认证进行中

结构特点

5种外壳：

- ① 盒式安装外壳
- ② 锁紧螺母外壳
- ③ 直插头
- ④ 墙式安装插座
- ⑤ 空中对接插座

3种表面处理方式：

- ① 镀黑锌
- ② 镀镍
- ③ 镀灰色锌镍

4种旋转定位角度：

胶芯旋转 W, X, Y, Z

压接端子尺寸：

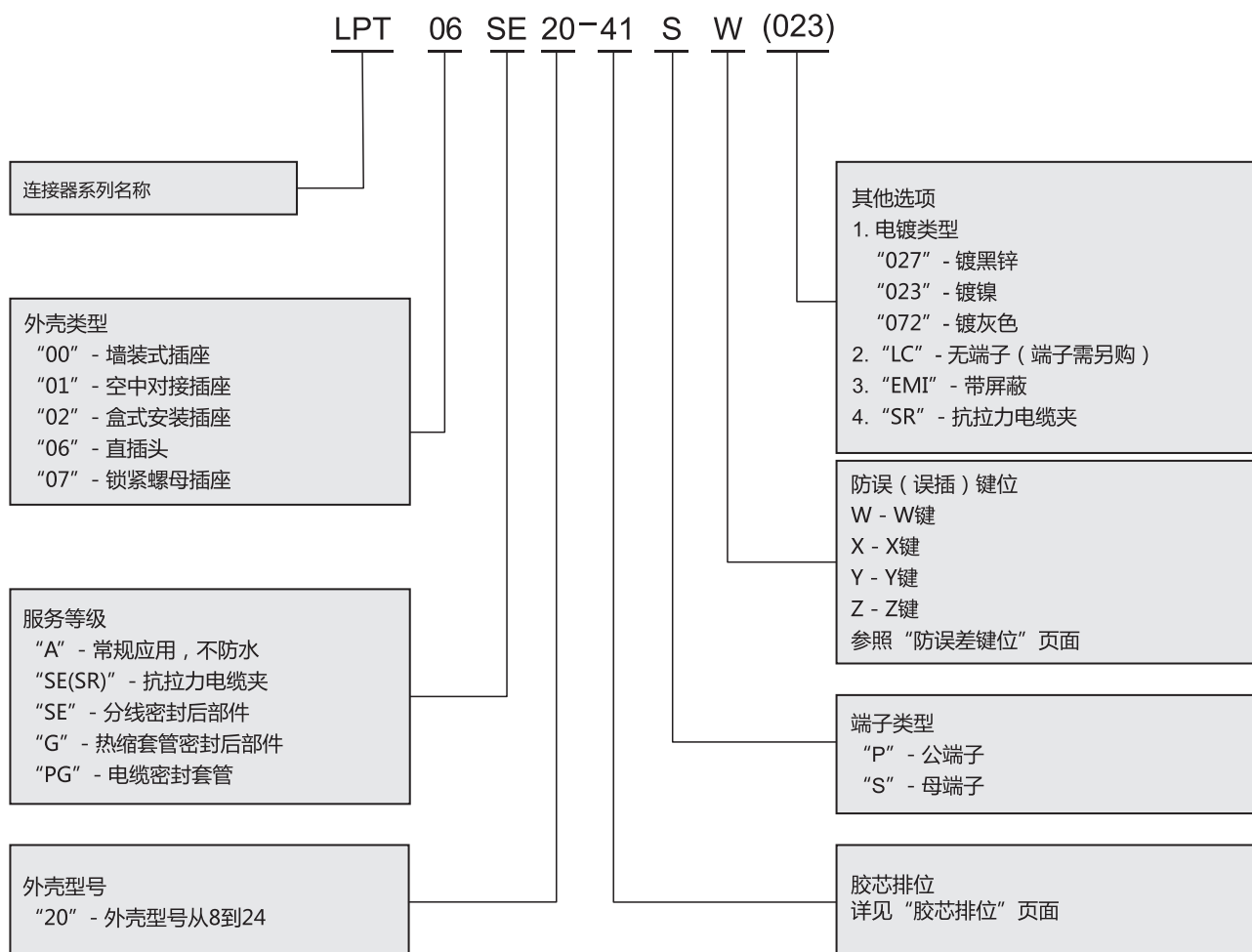
- ① #12: 14-12 (2.00-4.00mm²)
- ② #16: 18-16 (0.75-1.50mm²)
- ③ #20: 24-20 (0.25-0.50mm²)

④ 如需大电流端子或其他端子需求，请咨询销售团队

基本技术参数

外壳材料	铝合金	
胶芯材料	塑料	
端子	材料	铜合金
	电镀	镀锡/镍/金
	接线方式	压接
温度范围	-40°C to +125°C	
防护等级	在连接状态下防水等级为IP67&IP69K 未连接状态下可提供基础防尘盖或IP67等级的防水盖	
测试电流	20#端子 7.5A	
	16#端子 13A	
	12#端子23A, 12#RADSOK 端子35A	
推荐工作交流电压	I # 250V	
	II# 500V	
测试交流电压	I # 1500V	
	II# 2300V	
插配次数	500次	
盐雾测试	1. 电镀黑锌（无导电）：48H 2. 镀镍（导电）：48H 3. 镀灰色锌镍（导电）：500H	
抗振动	依据测试程序EIA-364-28	
温度冲击	依据测试程序EIA-364-32	
RoHS	符合	

选型编码

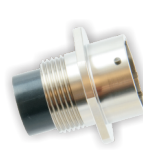


外壳类型

墙装式插座
LPT00



空中对接插座
LPT01



盒式安装插座
LPT02



直插头
LPT06

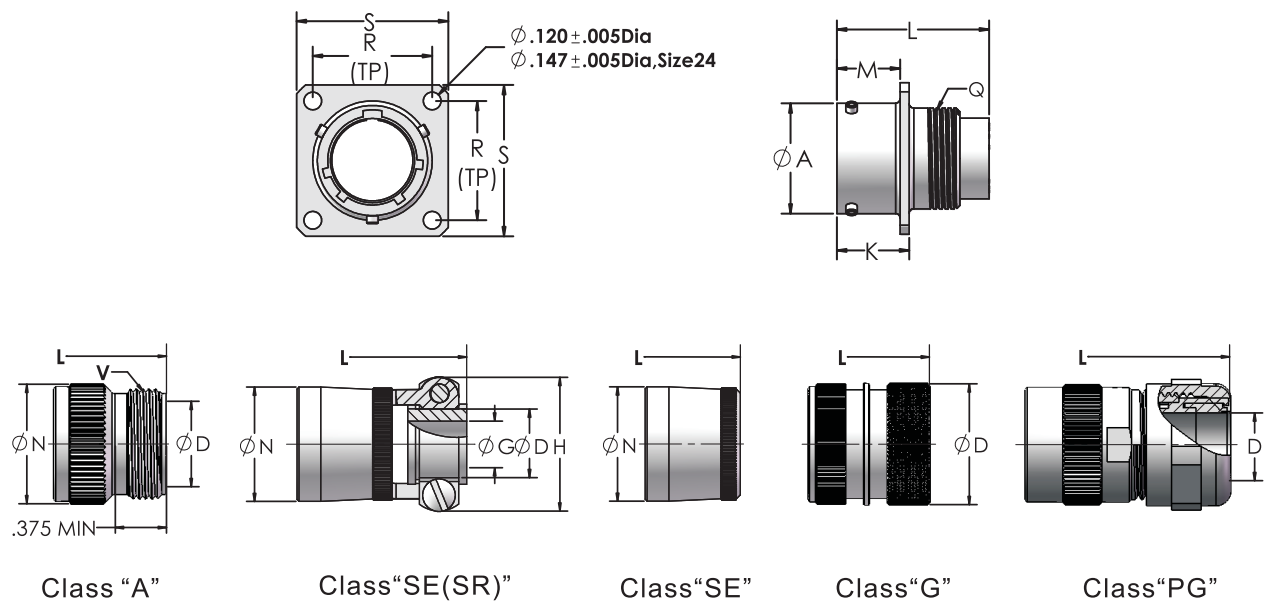


锁紧螺母 (八方盘) 插座
LPT07



产品尺寸

LPT00(墙装式插座及尾附件)

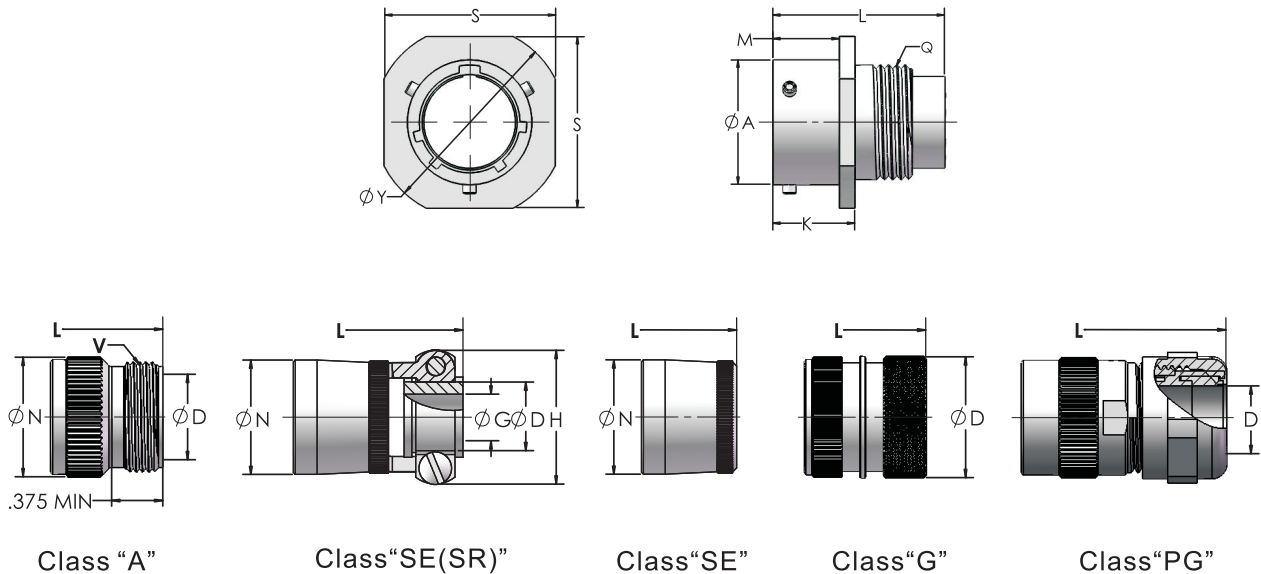


	插座 正面视图		插座侧面视图						CLASS "A"				CLASS "SE(SR)"	
外壳型号	R	S	A	M	K	L		Q	D	L	N	V	D	G
			+. 001	+. 010	+. 020	Max.		螺纹 Class 2A	Min.	Max.	Max.	螺纹 Class A	Min.	Max.
			-. 005	-. 000	-. 010	PIN	SOCKET							
8	.594	.812	.473	.431	.493	1.27	1.056	.4375-28UNEF	.297	1.633	.590	.5000-28UNEF	.240	.125
10	.719	.938	.590	.431	.493	1.27	1.056	.5625-24NEF	.421	1.633	.717	.6250-24NEF	.302	.188
12	.812	1.031	.750	.431	.493	.127	1.056	.6875-24NEF	.546	1.633	.834	.7500-20UNEF	.428	.312
14	.906	1.125	.875	.431	.493	.127	1.056	.8125-20UNEF	.663	1.633	.970	.8750-20UNEF	.552	.375
16	.969	1.219	1.000	.431	.493	1.27	1.056	.9375-20UNEF	.787	1.633	1.088	1.0000-20UNEF	.615	.500
18	1.062	1.312	1.125	.431	.493	1.27	1.056	1.0625-18NEF	.879	1.633	1.216	1.1875-18NEF	.740	.625
20	1.156	1.438	1.250	.556	.650	1.332	1.164	1.1875-18NEF	1.014	1.674	1.332	1.1875-18NEF	.740	.625
22	1.250	1.562	1.375	.556	.650	1.332	1.164	1.3125-18NEF	1.134	1.674	1.460	1.4375-18NEF	.928	.750
24	1.375	1.688	1.500	.589	.683	1.332	1.164	1.4375-18NEF	1.259	1.674	1.585	1.4375-18NEF	.990	.800

	CLASS "SE(SR)"				CLASS "SE"			CLASS "G"		CLASS "PG"		
外壳型号	H	L		N	L		N	L	N	N	D	L
	Max.	Max.		Max.	Max.		Max.	Max.	Max.	REF	线缆范围 (mm)	REF
		PIN	SOCKET		PIN	SOCKET						
8	.812	2.354	2.202	.550	1.746	1.538	.560	1.768	.620	.571	3-6.5	2.309
10	.875	2.354	2.202	.675	1.746	1.538	0.685	1.768	.730	.814	4-8	2.309
12	1.000	2.354	2.202	0.803	1.746	1.538	0.813	1.768	.939	.814	4-8	2.309
14	1.125	2.354	2.202	0.920	1.746	1.538	0.930	1.768	.971	.930	5-10	2.309
16	1.188	2.486	2.272	1.047	1.746	1.538	1.057	1.768	1.179	1.120	10-14	2.309
18	1.438	2.486	2.272	1.165	1.746	1.750	1.175	1.768	1.266	1.180	13-18	2.309
20	1.438	2.684	2.470	1.290	1.918	1.750	1.301	1.980	1.427	1.296	13-18	2.385
22	1.625	2.684	2.470	1.418	1.918	1.750	1.430	1.980	1.522	1.496	18-25	2.385
24	1.719	2.684	2.470	1.543	1.918	1.750	1.555	1.980	1.644	1.562	18-25	2.385

产品尺寸

LPT01(空中对接式插座及尾附件)

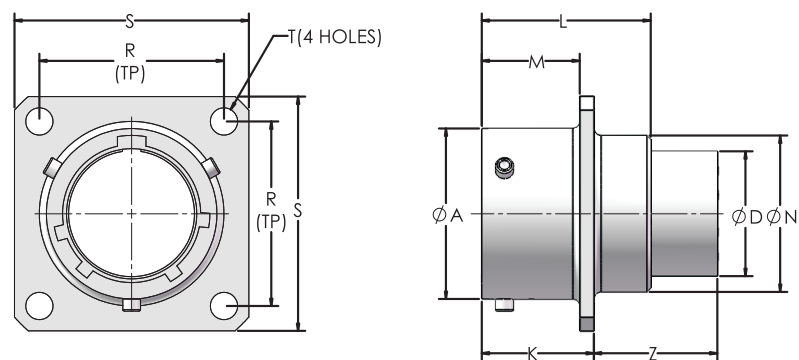


外壳型号	插座正面视图		插座侧面视图						CLASS "A"				CLASS "SE(SR)"	
	S	Y	A	M	K	L		Q	D	L	N	V	D	G
	±.020	±.020	+.001	+.010	+.020	Max.		螺纹 Class 2A	Min.	Max.	Max.	螺纹 Class A	Min.	Max.
			-.005	-.000	-.010	PIN	SOCKET							
8	.812	.0938	.473	.400	.494	1.27	1.056	.4375-28UNEF	.297	1.633	.590	.5000-28UNEF	.240	.125
10	.938	1.062	.590	.400	.494	1.27	1.056	.5625-24NEF	.421	1.633	.717	.6250-24NEF	.302	.188
12	1.031	1.156	.750	.400	.494	.127	1.056	.6875-24NEF	.546	1.633	.834	.7500-20UNEF	.428	.312
14	1.125	1.250	.875	.400	.494	.127	1.056	.8125-20UNEF	.663	1.633	.970	.8750-20UNEF	.552	.375
16	1.219	1.344	1.000	.400	.494	1.27	1.056	.9375-20UNEF	.787	1.633	1.088	1.0000-20UNEF	.615	.500
18	1.312	1.438	1.125	.400	.494	1.27	1.056	1.0625-18NEF	.879	1.633	1.216	1.1875-18NEF	.740	.625
20	1.438	1.562	1.250	.535	.650	1.332	1.164	1.1875-18NEF	1.014	1.674	1.332	1.1875-18NEF	.740	.625
22	1.562	1.688	1.375	.535	.650	1.332	1.164	1.3125-18NEF	1.134	1.674	1.460	1.4375-18NEF	.928	.750
24	1.688	1.812	1.500	.568	.683	1.332	1.164	1.4375-18NEF	1.259	1.674	1.585	1.4375-18NEF	.990	.800

	CLASS "SE(SR)"				CLASS "SE"			CLASS "G"		CLASS "PG"		
外壳型号	H	L		N	L		N	L	N	N	D	L
	Max.	Max.		Max.	Max.		Max.	Max.	Max.	REF	线缆范围 (mm)	REF
		PIN	SOCKET		PIN	SOCKET						
8	.812	2.354	2.202	.550	1.746	1.538	.560	1.768	.620	.571	3-6.5	2.309
10	.875	2.354	2.202	.675	1.746	1.538	0.685	1.768	.730	.814	4-8	2.309
12	1.000	2.354	2.202	0.803	1.746	1.538	0.813	1.768	.939	.814	4-8	2.309
14	1.125	2.354	2.202	0.920	1.746	1.538	0.930	1.768	.971	.930	5-10	2.309
16	1.188	2.486	2.272	1.047	1.746	1.538	1.057	1.768	1.179	1.120	10-14	2.309
18	1.438	2.486	2.272	1.165	1.746	1.750	1.175	1.768	1.266	1.180	13-18	2.309
20	1.438	2.684	2.470	1.290	1.918	1.750	1.301	1.980	1.427	1.296	13-18	2.385
22	1.625	2.684	2.470	1.418	1.918	1.750	1.430	1.980	1.522	1.496	18-25	2.385
24	1.719	2.684	2.470	1.543	1.918	1.750	1.555	1.980	1.644	1.562	18-25	2.385

产品尺寸

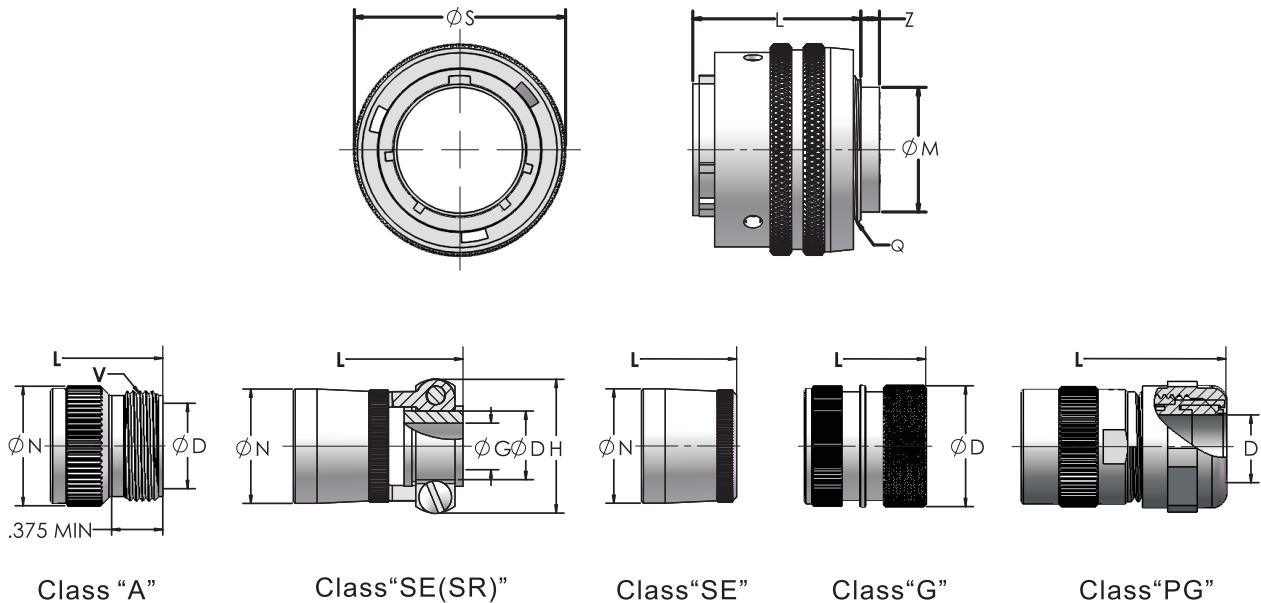
LPT02 (盒式安装插座)



外壳型号	插座正面视图			插座侧面视图							
	R	S	T	A	D	K	L	M	N	Z	
			±.005	+. 001 -. 005	Max.	+. 020 -. 010	Max.	+. 020 -. 010	Dia. Max.	Max.	
										PIN	SOCKET
8	.594	.812	.120	.473	.322	.493	.825	.431	.449	.777	.563
10	.719	.938	.120	.590	.439	.493	.825	.431	.573	.777	.563
12	.812	1.031	.120	.750	.557	.493	.825	.431	.699	.777	.563
14	.906	1.125	.120	.875	.678	.493	.825	.431	.823	.777	.563
16	.969	1.219	.120	1.000	.807	.493	.825	.431	.949	.777	.563
18	1.062	1.312	.120	1.125	.908	.493	.825	.431	1.073	.777	.563
20	1.156	1.438	.120	1.250	1.033	.650	1.076	.556	1.199	.682	.514
22	1.250	1.562	.120	1.375	1.158	.650	1.076	.556	1.323	.682	.514
24	1.375	1.688	.147	1.500	1.283	.683	1.109	.589	1.449	.649	.481

产品尺寸

LPT06 (直插头及尾附件)

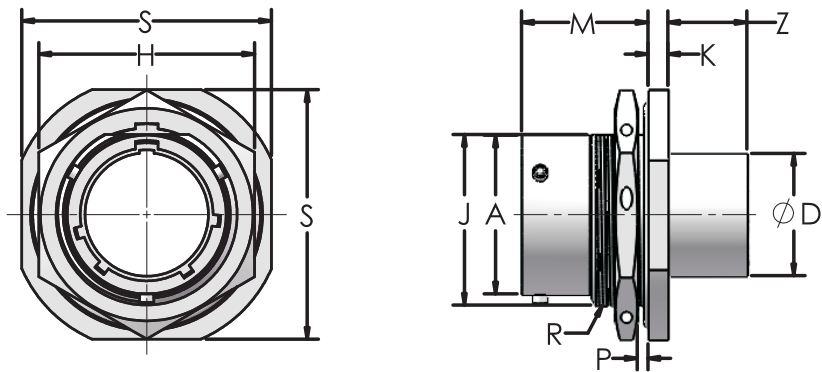


	插头 正面视图	插头侧面视图					CLASS "A"				CLASS "SE(SR)"	
外壳型号	S	L	M	Q	Z		D	L	N	V	D	G
	Max.	Max.	Max.	螺纹	Max.		Min.	Max.	Max.	螺纹	Min.	Max.
				Class 2A	PIN	SOCKET				Class A		
8	.750	.928	.322	.4375-28UNEF	.324	.110	.326	1.615	.590	.5000-28UNEF	.240	.125
10	.859	.928	.439	.5625-24NEF	.324	.110	.443	1.615	.717	.6250-24NEF	.302	.188
12	1.031	.928	.557	.6875-24NEF	.324	.110	.557	1.615	.834	.7500-20UNEF	.428	.312
14	1.156	.928	.678	.8125-20UNEF	.324	.110	.682	1.615	.970	.8750-20UNEF	.552	.375
16	1.281	.928	.807	.9375-20UNEF	.324	.110	.807	1.615	1.088	1.0000-20UNEF	.615	.500
18	1.391	.928	.908	1.0625-18NEF	.324	.110	.908	1.615	1.216	1.1875-18NEF	.740	.625
20	1.531	1.000	1.033	1.1875-18NEF	.248	.080	1.033	1.594	1.332	1.1875-18NEF	.740	.625
22	1.656	1.000	1.158	1.3125-18NEF	.248	.080	1.158	1.594	1.460	1.4375-18NEF	.928	.750
24	1.776	1.000	1.283	1.4375-18NEF	.248	.080	1.283	1.594	1.587	1.4375-18NEF	.990	.800

	CLASS “SE(SR)”			CLASS “SE”			CLASS “G”		CLASS “PG”			
外壳型号	H	L		N	N	L		L	N	N	D	L
	Max.	Max.		Max.	Max.	Max.		Max.	Max.	REF	线缆范围	REF
		Pin	Socket			(mm)						
8	.812	2.336	2.122	.550	.540	1.728	1.520	1.750	.620	.571	3-6.5	2.291
10	.875	2.336	2.122	.675	0.665	1.728	1.520	1.750	.730	.814	4-8	2.291
12	1.000	2.336	2.122	0.803	0.793	1.728	1.520	1.750	.939	.814	4-8	2.291
14	1.125	2.336	2.122	0.920	0.910	1.728	1.520	1.750	.971	.930	5-10	2.291
16	1.188	2.468	2.254	1.047	1.037	1.728	1.520	1.750	1.179	1.120	10-14	2.291
18	1.438	2.468	2.254	1.165	1.155	1.728	1.520	1.750	1.266	1.180	13-18	2.291
20	1.438	2.604	2.390	1.290	1.281	1.838	1.670	1.900	1.427	1.296	13-18	2.305
22	1.625	2.604	2.390	1.418	1.410	1.838	1.670	1.900	1.522	1.496	18-25	2.305
24	1.719	2.604	2.390	1.543	1.535	1.838	1.670	1.900	1.644	1.562	18-25	2.305

产品尺寸

LPT07 (锁紧螺母插座)



外壳型号	插座正面视图					插座侧面视图						
	H ±.016	S	A	D	J Flat	K	M	P 面板厚度		R	Z	
			+. 001	Dia.	+. 001	+. 011		Min.	Max.	螺纹 Class 2A UNEF	Max.	
			-. 005	Max.	-. 005	-. 010					PIN	SOCKET
8	.750	.938	.473	.322	.530	.125	.696	.062	.125	.5625-24	.450	.235
10	.875	1.062	.590	.439	.655	.125	.696	.062	.125	.6875-24	.450	.235
12	1.062	1.250	.750	.557	.818	.125	.696	.062	.125	.8750-20	.450	.235
14	1.188	1.375	.875	.678	.942	.125	.696	.062	.125	1.0000-20	.450	.235
16	1.312	1.500	1.000	.807	1.066	.125	.696	.062	.125	1.1250-18	.450	.235
18	1.438	1.625	1.125	.908	1.191	.125	.696	.062	.125	1.2500-18	.450	.235
20	1.562	1.812	1.250	1.033	1.316	.156	.884	.062	.250	1.3750-18	.292	.124
22	1.688	1.938	1.375	1.158	1.441	.156	.884	.062	.250	1.5000-18	.292	.124
24	1.816	2.062	1.500	1.283	1.566	.156	.917	.062	.250	1.6250-18	.260	.092