

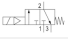




# 3/2-directional valve, electrically operated, Series NL4-SOV

- Compressed air connection G 1/2
- Pipe connection
- Electrical connection: Plug, ISO 6952, form B



Version	Poppet valve, Can be assembled into blocks
Parts	3/2-directional valve, electrically operated
Nominal flow 1 ▶ 2	4000 l/min
Nominal flow 2 ▶ 3	1600 l/min
Working pressure min./max.	2.5 ... 10 bar
Medium	Compressed air Neutral gases
Medium temperature min./max.	-10 ... 60 °C
Ambient temperature min./max.	-10 ... 60 °C
Pilot	Internal
Sealing principle	Soft sealing
Max. particle size	5 µm
Protection class acc. to DIN EN 61140 with plug	IP65
Duty cycle	100 %
Weight	See table below

## Technical data

Part No.			Compressed air connection input	Compressed air connection output	Exhaust
0821300932		—	G 1/2	G 1/2	G 1/2
0821300933		—	G 1/2	G 1/2	G 1/2
0821300934		—	G 1/2	G 1/2	G 1/2
0821300937			G 1/2	G 1/2	G 1/2

Part No.	Operational voltage	Operational voltage	Operational voltage
	DC	AC 50 Hz	AC 60 Hz
0821300932	24 V	-	-
0821300933	-	230 V	230 V
0821300934	-	-	-
0821300937	-	-	-

Part No.	Power consumption	Holding power	Switch-on power	Manual override
	DC	AC 50 Hz	AC 50 Hz	
0821300932	4.8 W	-	-	-
0821300933	-	8.5 VA	11.8 VA	-
0821300934	-	-	-	-
0821300937	-	-	-	with detent

Part No.	Electrical connection	Connector standard	basic valve with electrical connector
	Pilot valve		
0821300932	Plug, ISO 6952, form B	ISO 6952	-

Part No.	Electrical connection	Connector standard	basic valve with electrical connector
	Pilot valve		
0821300933	Plug, ISO 6952, form B	ISO 6952	-
0821300934	Plug, ISO 6952, form B	-	pilot valve without coil
0821300937	Plug, ISO 6952, form B	-	pilot valve without coil

Part No.	Reverse polarity protection	Weight
0821300932	Protected against polarity reversal	1.05 kg
0821300933	Protected against polarity reversal	1.05 kg
0821300934	Protected against polarity reversal	1.09 kg
0821300937	Protected against polarity reversal	1.05 kg

Nominal flow Q<sub>n</sub> with secondary pressure 6 bar at  $\Delta p = 1$  bar, MO = Manual override

## Technical information

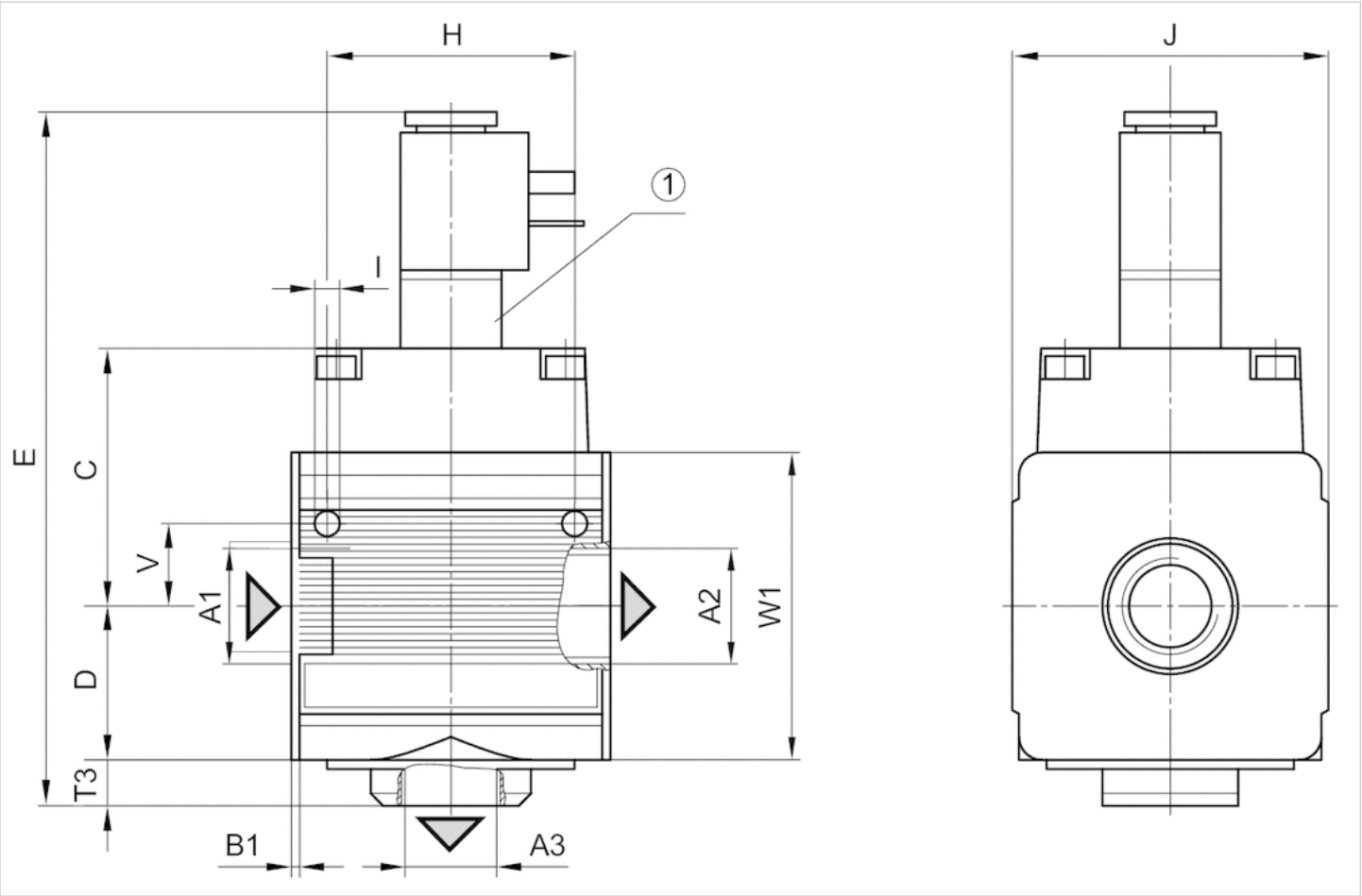
The pressure dew point must be at least 15 °C under ambient and medium temperature and may not exceed 3 °C .  
A change in the flow direction (from air supply on the left to air supply on the right) occurs by rotating installation by 180° about the vertical axis. Please see the operating instructions for further details.

## Technical information

Material	
Housing	Die cast zinc
Front plate	Acrylonitrile butadiene styrene
Seals	Acrylonitrile butadiene styrene

Dimensions

Dimensions



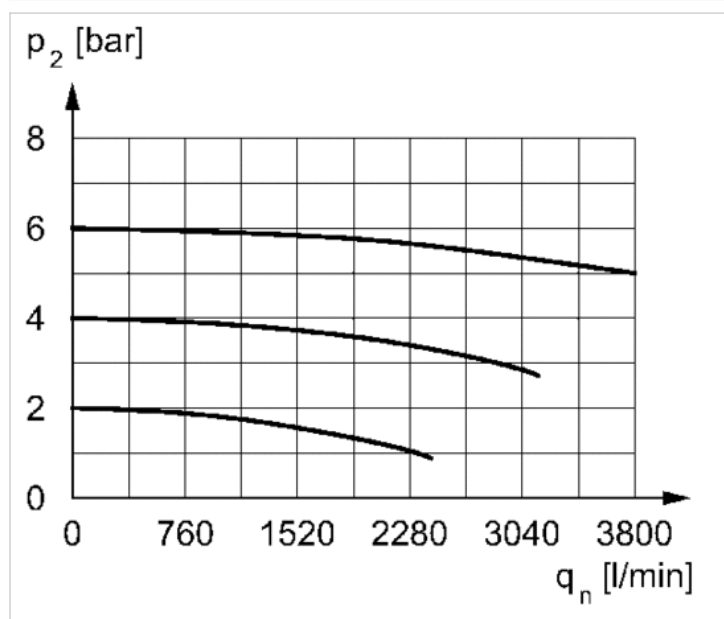
- A1 = input
- A2 = output
- A3 = ventilation port
- 1) electrically operated

Dimensions in mm

A1	A2	A3	B1	C	D	E	H	I	J	T3	W1
G 1/2	G 1/2	G 1/2	1.8	56.5	33.5	151	54	5.5	69	10	67

## Diagrams

### Flow rate characteristic



$p_2$  = secondary pressure  
 $q_n$  = nominal flow