



High Country Tek by Enovation Controls

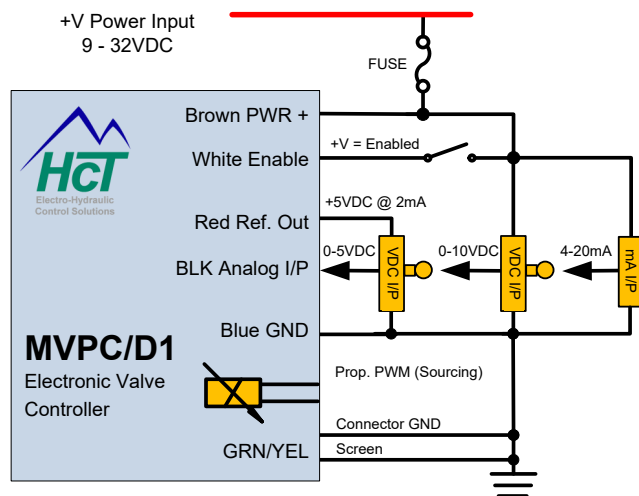
Proportional Valve Controller **MVP-C**

Electronic Controller Solutions for Mobile, Industrial & Marine Applications

Product Feature Overview

- Permanently sealed, standard DIN 43650 Form A connector body with pre-wired 18AWG PVC cable
- All input and output limits are independently adjustable
- Multiple modes for open loop, closed loop and inverted
- Single coil, programmable enable input
- Output short circuit protection and open circuit alert
- Diagnostic LED's with system "status" blink code indication
- PC based Graphical User Interface (GUI) for system configuration
- Infrared HCT Hand Held Interface for system configuration

Basic Connection Diagram



MVP-C Wiring	
Terminal	Function
Brown	+PWR
Blue	PWR GND
Black	Command Input
White	Enable Switch
Red	+5V Reference
GRN/YEL	Connector GND



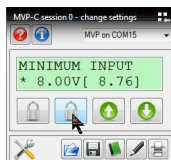
Controller Specification Overview

	MVP-C (Standard)	MVP-Cxx-xxxxD1
Housing Type	HCT custom DIN enclosure	
Power Supp. Voltage	9 to 32VDC (<i>Absolute Maximum</i>)	
Current Consumption	Load current + 20mA Quiescent (<i>Max</i>)	
Analog Input Range	-C1V: 0 to 10V; -C2A: 4 to 20mA	
Outputs	06A: 600mA max 12A: 1.2A max 25A: 2.5A max	06A: 600mA max 25A: 2.5A max
PWM Dither Freq. (Standard)	30, 33, 38, 43, 50, 60, 75, 100, 150, 300Hz (Select OFF for 1000Hz)	80, 100, 120, 140, 160, 180, 200, 220, 240, 260, 280, 300Hz (Select OFF for 1000Hz)
Module Connector	DIN 43650 Form A connector body	
Communication	Infrared Communication	
Housing Material	33% glass reinforced, heat stabilized, black polyamide 66	
Temperature Range	-40 to +85°C (<i>Operational</i>) -60 to +90°C (<i>Storage</i>)	
NEMA/IP Rating	NEMA 4 / IP67	



Proportional Valve Controller MVP-C

Accessories



Graphical User Interface

Free PC set-up software. Download at <http://support.enovationcontrols.com>



Comm. Cable

Infrared Hand Held Interface for Device
Part #: CBL-IRA



Comm. Cable

Infrared Hand Held Interface for PC
Part #: CBL-IRMU

Order Information

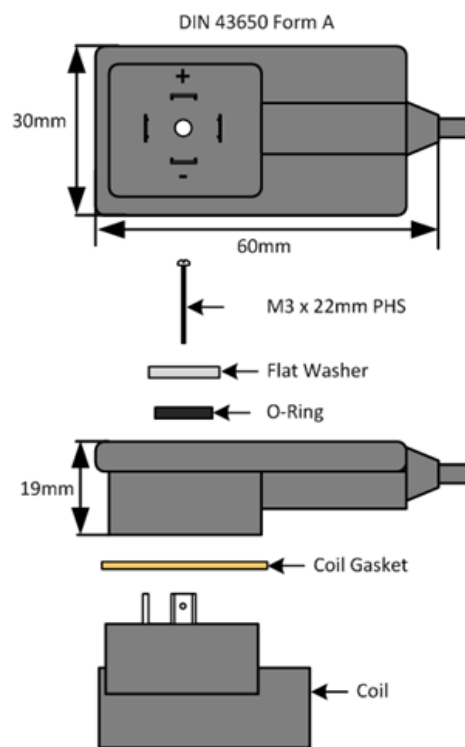
MVP-C1V-06A-10F

10F = 10ft cable
20F & 30F standards

06A = 600mA output
12A = 1200mA output
25A = 2500mA output

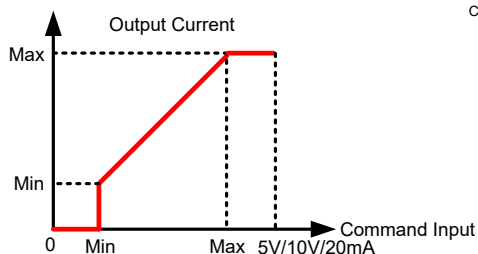
C1V = 0-10V input
C2A = 4-20mA

Dimensions

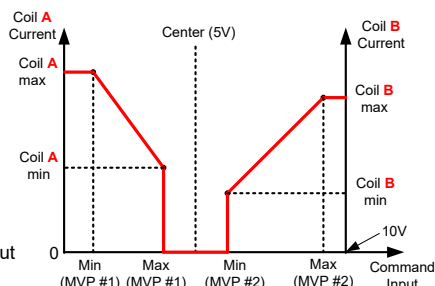


Application Examples

Single Valve Control



Dual Valve Control



NOTE: Dual valve control requires two MVP's

