

MPF series

Maximum working pressure up to 800 kPa (8 bar) - Flow rate up to 750 l/min



Description

Technical data

Return filter

Maximum working pressure up to 800 kPa (8 bar)

Flow rate up to 750 l/min

MPF is a range of return filters for protection of the reservoir against the system contamination.

They are directly fixed to the reservoir, in immersed or semi-immersed position.

The filter output must be always immersed into the fluid to avoid aeration or foam generation into the reservoir.

Available features:

- Female threaded connections up to 2" and flanged connections up to 2", for a maximum flow rate of 750 l/min
- Multiple connections, to connect several return lines or drains
- Fine filtration rating, to get a good cleanliness level into the reservoir
- Bypass valve integrated into the filter element, to relieve excessive pressure drop across the filter media
- 2, 3 or 4 fixing holes for installation, to suit a variety of reservoir surfaces
- O-ring or Flat Seal to suit a variety of reservoir surfaces
- Oil dipstick, to easily check the level of the fluid into the reservoir (sold as separate item)
- Extension tube, to be used in deep reservoirs (sold as separate item)
- Diffuser, to reduce the risk of aeration, foaming and noise (sold as separate item)
- Filler plug, to fill cleaned fluid into the tank without an additional connection
- Visual, electrical and electronic clogging indicators

Common applications:

- Light industrial equipment
- Mobile application

Filter housing materials

- Head: Aluminium

- Cover

Nylon: MPF 020-030-100-104-110

Aluminium: MPF 181-182-184-191-192-194-400-410-450-451-750

- Bowl: Nylon

Bypass valve

- Opening pressure 175 kPa (1.75 bar) $\pm 10\%$

- Opening pressure 300 kPa (3 bar) $\pm 10\%$

Δp element type

- Microfibre filter elements - series H: 10 bar

- Fluid flow through the filter element from OUT to IN

Seals

- Standard NBR series A

- Optional FPM series V

Temperature

From -25 °C to +110 °C

Note

MPF filters are provided for vertical mounting



Weights [kg] and volumes [dm³]

Filter series	Weights [kg]					Volumes [dm³]				
	Length	1	2	3	4	Length	1	2	3	4
MPF 020		0.30	-	-	-		0.26	-	-	-
MPF 030		0.40	-	-	-		0.29	-	-	-
MPF 100		0.61	0.64	0.67	0.74		0.64	0.85	1.20	1.65
MPF 104		0.82	0.96	1.02	1.25		0.64	0.85	1.20	1.65
MPF 110		0.64	0.68	0.71	0.78		-	-	-	-
MPF 181		2.20	3.00	-	-		2.50	4.00	-	-
MPF 182		2.30	3.10	-	-		2.50	4.00	-	-
MPF 184		2.55	3.45	-	-		2.65	4.45	-	-
MPF 191		-	3.00	-	-		-	4.25	-	-
MPF 192		-	3.10	-	-		-	4.25	-	-
MPF 194		-	3.45	-	-		-	4.45	-	-
MPF 400		3.35	3.65	3.90	-		3.70	4.60	5.40	-
MPF 410		3.55	3.85	4.10	-		3.70	4.60	5.40	-
MPF 450-451		3.95	4.25	4.50	-		3.70	4.60	5.40	-
MPF 750		6.30	-	-	-		8.45	-	-	-

FILTER ASSEMBLY SIZING Flow rates [l/min]

Filter series	Length	Filter element design - H series					Filter element design - N series		
		A03	A06	A10	A16	A25	M25 M60 M90	P10	P25
MPF 020	1	7	10	23	28	42	59	51	54
MPF 030	1	7	10	24	29	47	84	60	66
MPF 100-104-110	1	18	20	53	56	65	153	87	96
	2	28	38	65	75	95	158	111	123
	3	48	55	125	135	169	289	224	251
	4	79	89	180	185	198	306	264	289
MPF 181-182-184	1	127	148	235	243	278	441	285	299
	2	231	262	358	382	388	472	404	412
MPF 191-192-194	2	261	305	489	528	546	696	583	598
MPF 400	1	150	171	294	304	350	585	370	390
	2	237	252	454	462	589	868	619	645
	3	248	288	553	609	621	885	680	703
MPF 410	1	146	167	277	285	325	512	341	357
	2	226	239	396	402	485	644	503	519
	3	236	269	462	497	505	653	539	553
MPF 450-451	1	150	171	294	304	350	585	370	390
	2	237	252	454	462	589	868	619	645
	3	248	288	553	609	621	885	680	703
MPF 750	1	392	465	623	700	769	929	804	819

Maximum flow rate for a complete return filter with a pressure drop $\Delta p = 0.5$ bar.

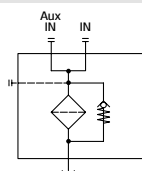
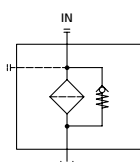
The reference fluid has a kinematic viscosity of 30 mm²/s (cSt) and a density of 0.86 kg/dm³.

For different pressure drop or fluid viscosity we recommend to use our selection software available on www.mpfiltri.com.

You can also calculate the right size using the formulas present on the FILTER SIZING paragraph at the beginning of the full catalogue or at the beginning of the filter family brochure. Please, contact our Sales Department for further additional information.

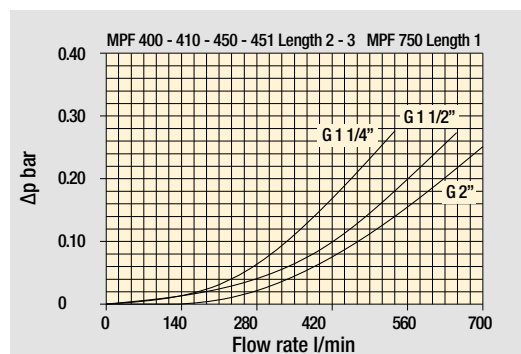
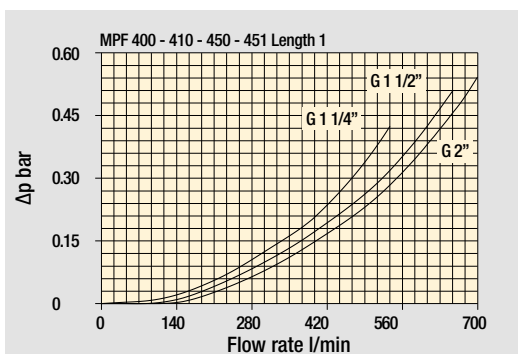
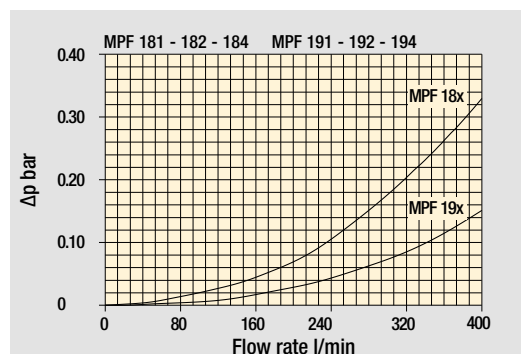
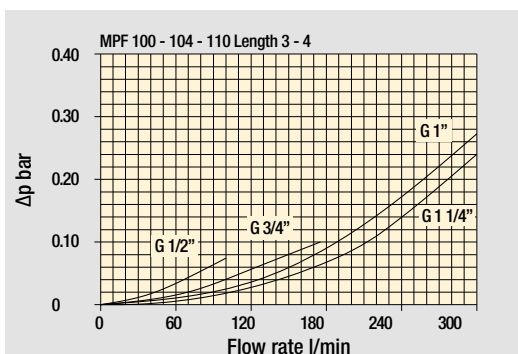
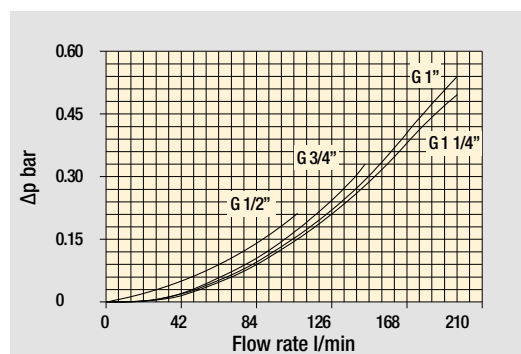
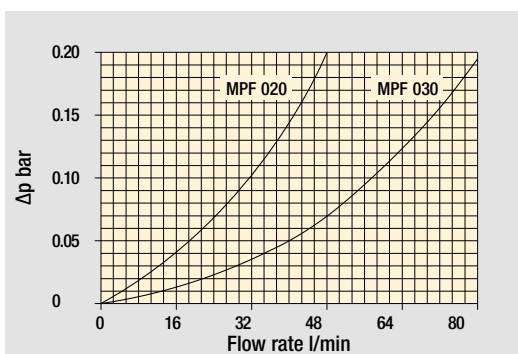
Hydraulic symbols

Filter series	Style 1 connection	Style 2 connections
MPF 020	•	
MPF 030	•	
MPF 100	•	
MPF 104	•	
MPF 110		•
MPF 181	•	
MPF 182		•
MPF 184	•	•
MPF 191	•	
MPF 192	•	
MPF 194	•	•
MPF 400	•	
MPF 410		•
MPF 450	•	
MPF 451		•
MPF 750	•	

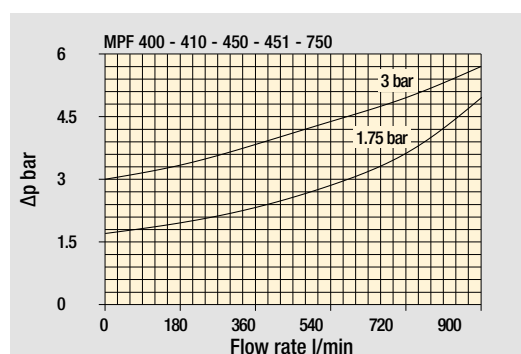
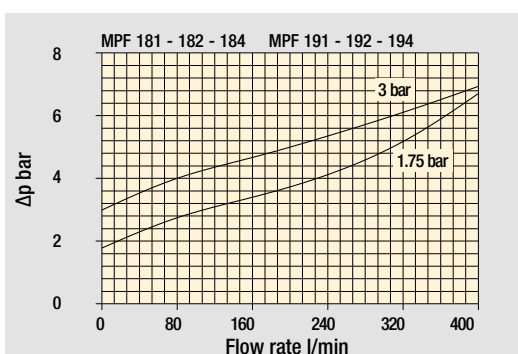
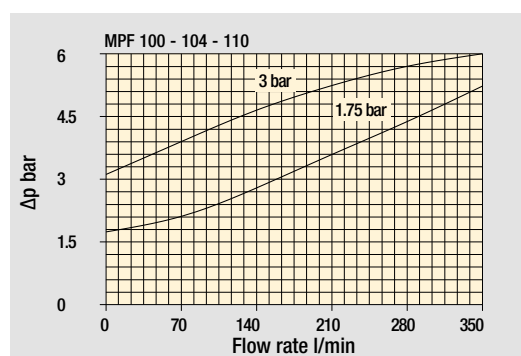
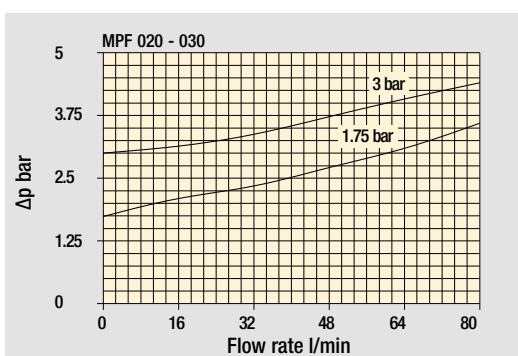


Pressure drop

Filter housings Δp pressure drop



Bypass valve pressure drop

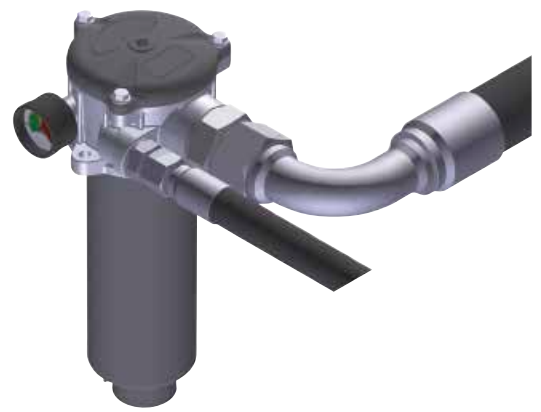


The curves are plotted using mineral oil with density of 0.86 kg/dm³ in compliance with ISO 3968. Δp varies proportionally with density.

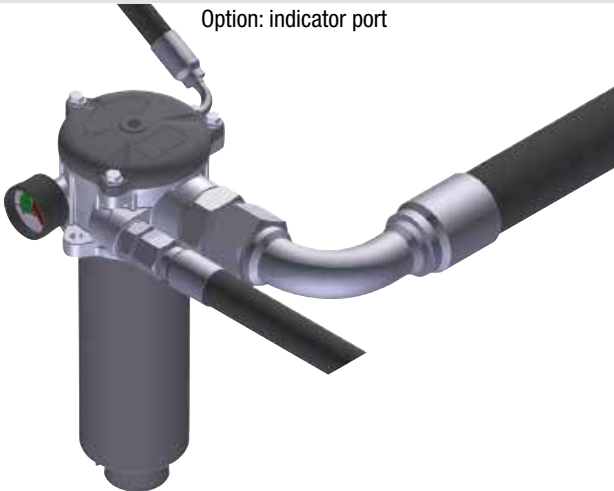
Standard - Single IN port



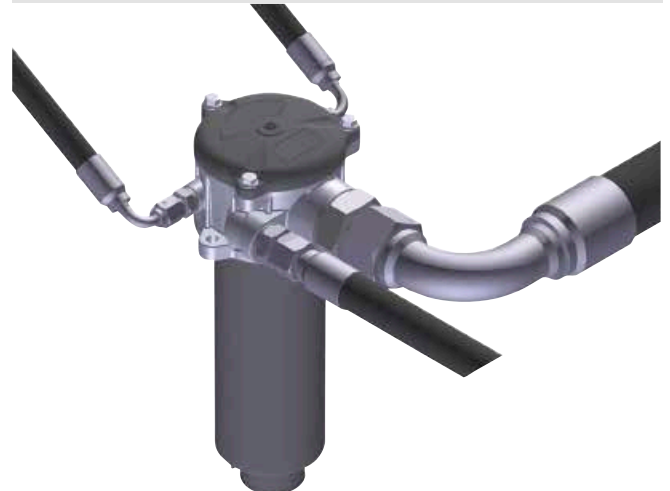
Double IN port
Option: double indicator port



Double IN port - Drain port
Option: indicator port



Double IN port - Double drain port



Designation & Ordering code

COMPLETE FILTER

Series and size		Configuration example 1:		MPF020	1	A	P1	A10	H	E	P01
MPF020	MPF030	Filter element with standard spigot									
Configuration example 2:		MPF030	1	V	G1	M25	N	B	P01		
Length											
1											
Seals and treatments											
A	NBR										
V	FPM										
W	NBR	head anodized									
Z	FPM	head anodized									
Connections		Size 20	Size 30								
P1	Hose barb ø12	•									
G1	G 1/2"		•								
G4	1/2" NPT		•								
G7	SAE 8 - 3/4" - 16 UNF		•								
Filtration rating (filter media)											
A03	Inorganic microfiber 3 µm	M25 Wire mesh 25 µm									
A06	Inorganic microfiber 6 µm	M60 Wire mesh 60 µm									
A10	Inorganic microfiber 10 µm	M90 Wire mesh 90 µm									
A16	Inorganic microfiber 16 µm	P10 Resin impregnated paper 10 µm									
A25	Inorganic microfiber 25 µm	P25 Resin impregnated paper 25 µm									
Filter media											
Element Δp	Axx	Mxx	Pxx								
N 10 bar		•	•								
H 10 bar	•										
W 10 bar, compatible with fluids HFA, HFB and HFC	•	•									
Bypass valve		Execution									
E 3 bar	P01 MP Filtri standard										
B 1.75 bar	Pxx Customized										

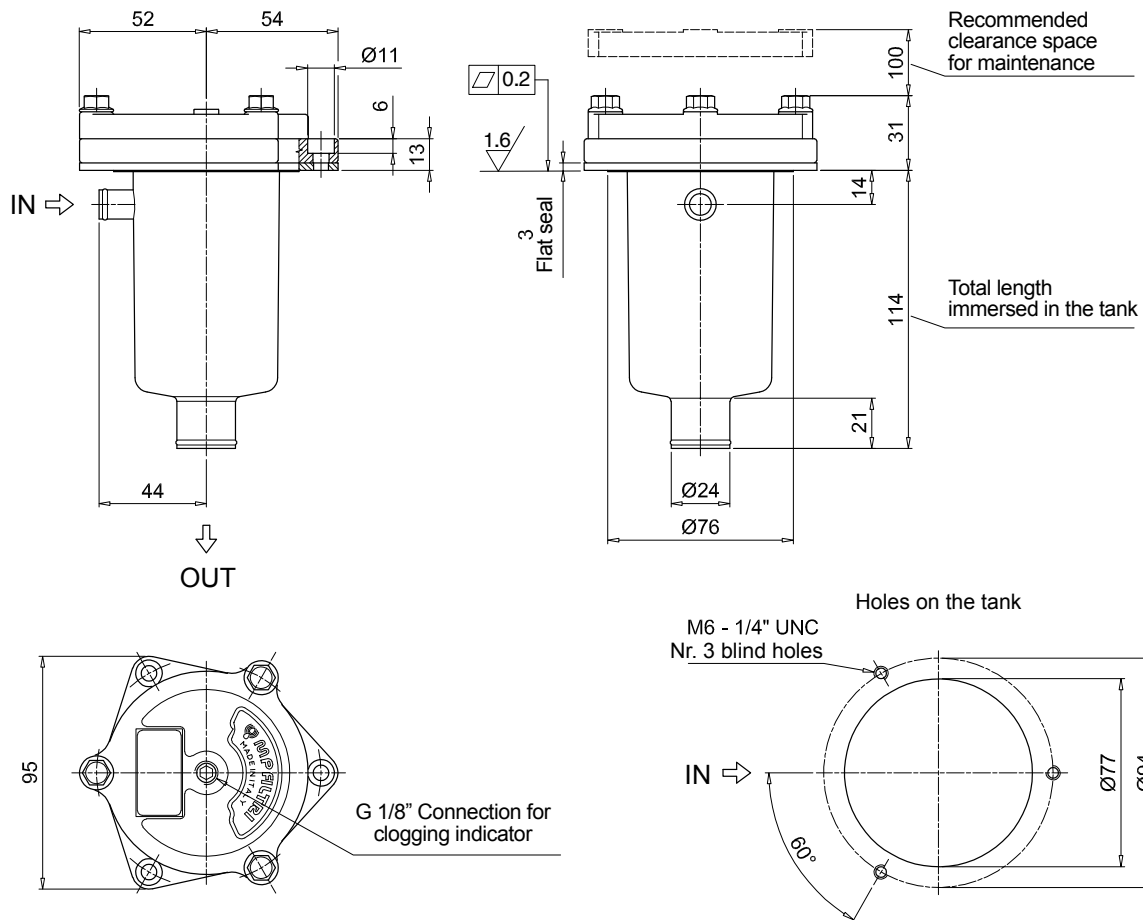
FILTER ELEMENT

Element series and size				Configuration example 1:		MF030	1	A10	H	B	E	P01
MF030 Filter element with standard spigot				Configuration example 2:		MF030	1	M25	N	V		P01
Element length												
1												
Filtration rating (filter media)												
A03 Inorganic microfiber 3 µm		M25 Wire mesh 25 µm										
A06 Inorganic microfiber 6 µm		M60 Wire mesh 60 µm										
A10 Inorganic microfiber 10 µm		M90 Wire mesh 90 µm										
A16 Inorganic microfiber 16 µm		P10 Resin impregnated paper 10 µm										
A25 Inorganic microfiber 25 µm		P25 Resin impregnated paper 25 µm										
				Filter media								
Element Δp		Axx	Mxx	Pxx								
N 10 bar			•	•								
H 10 bar		•										
W 10 bar, compatible with fluids HFA, HFB and HFC		•	•									
				Seals		Bypass valve		Execution				
				B NBR		E 3 bar		P01 MP Filtri standard				
				V FPM		1.75 bar		Pxx Customized				

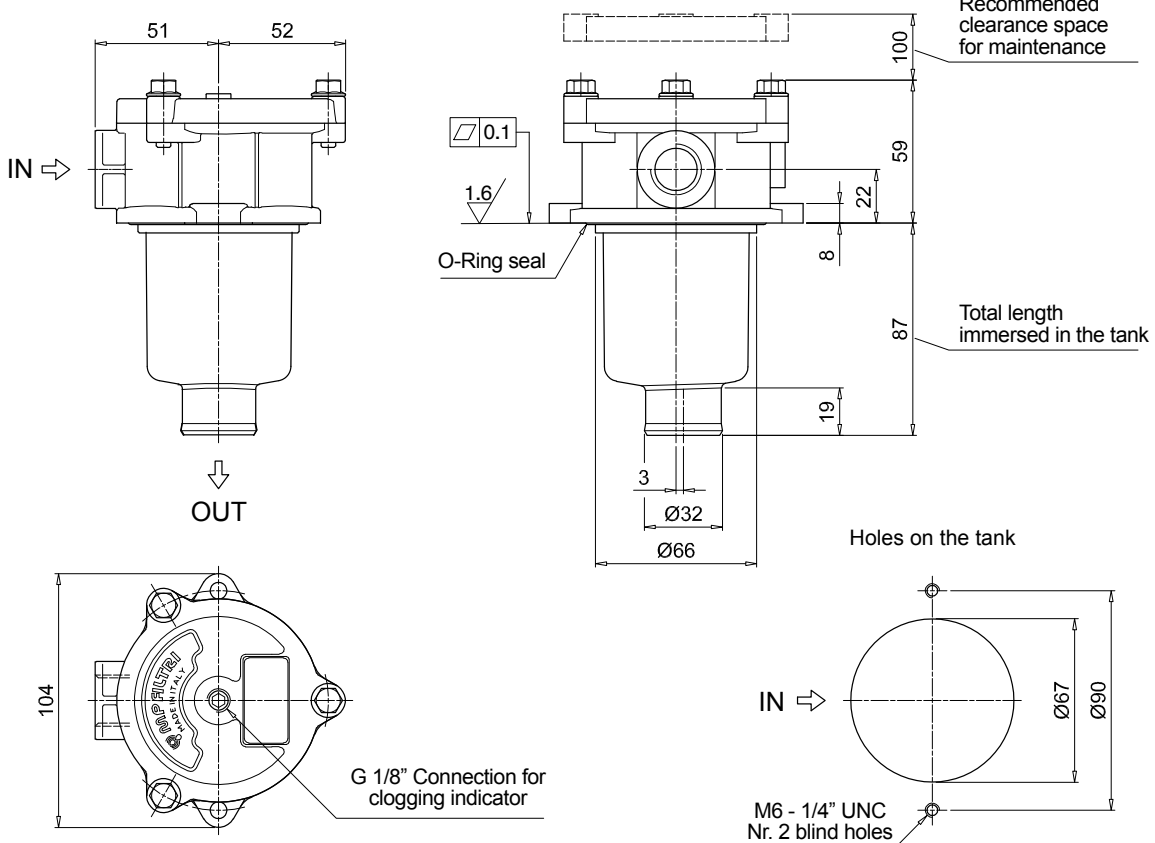
ACCESSORIES

Indicators		page
BVA	Axial pressure gauge	240
BVR	Radial pressure gauge	240
BVP	Visual pressure indicator with automatic reset	241
BVQ	Visual pressure indicator with manual reset	241
Additional features		page
TE	Extension tube	248
T5	Filler plug M30x1.5	249

MPF020



MPF030



MPF MPF100 - MPF104

Designation & Ordering code

COMPLETE FILTER

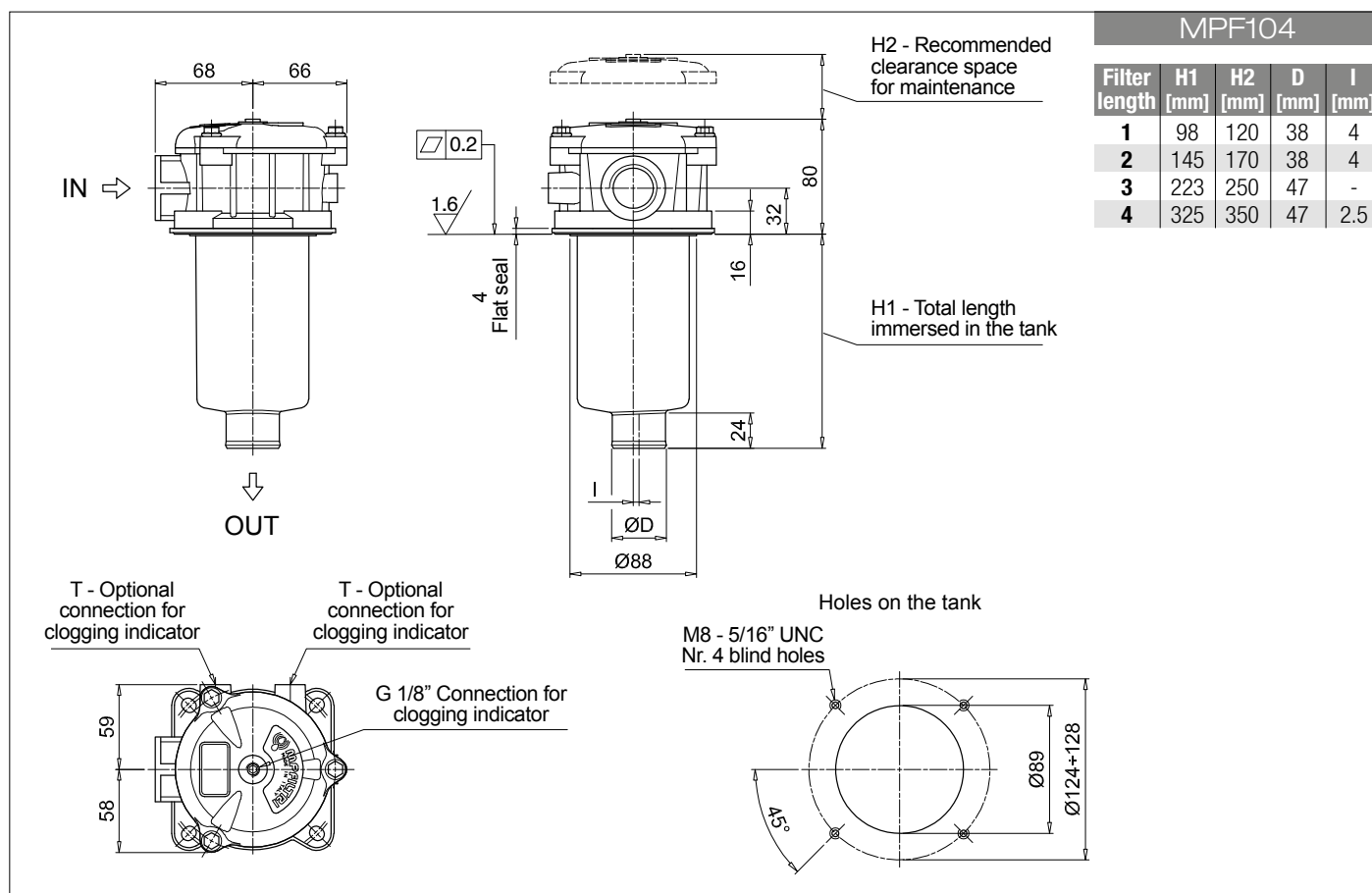
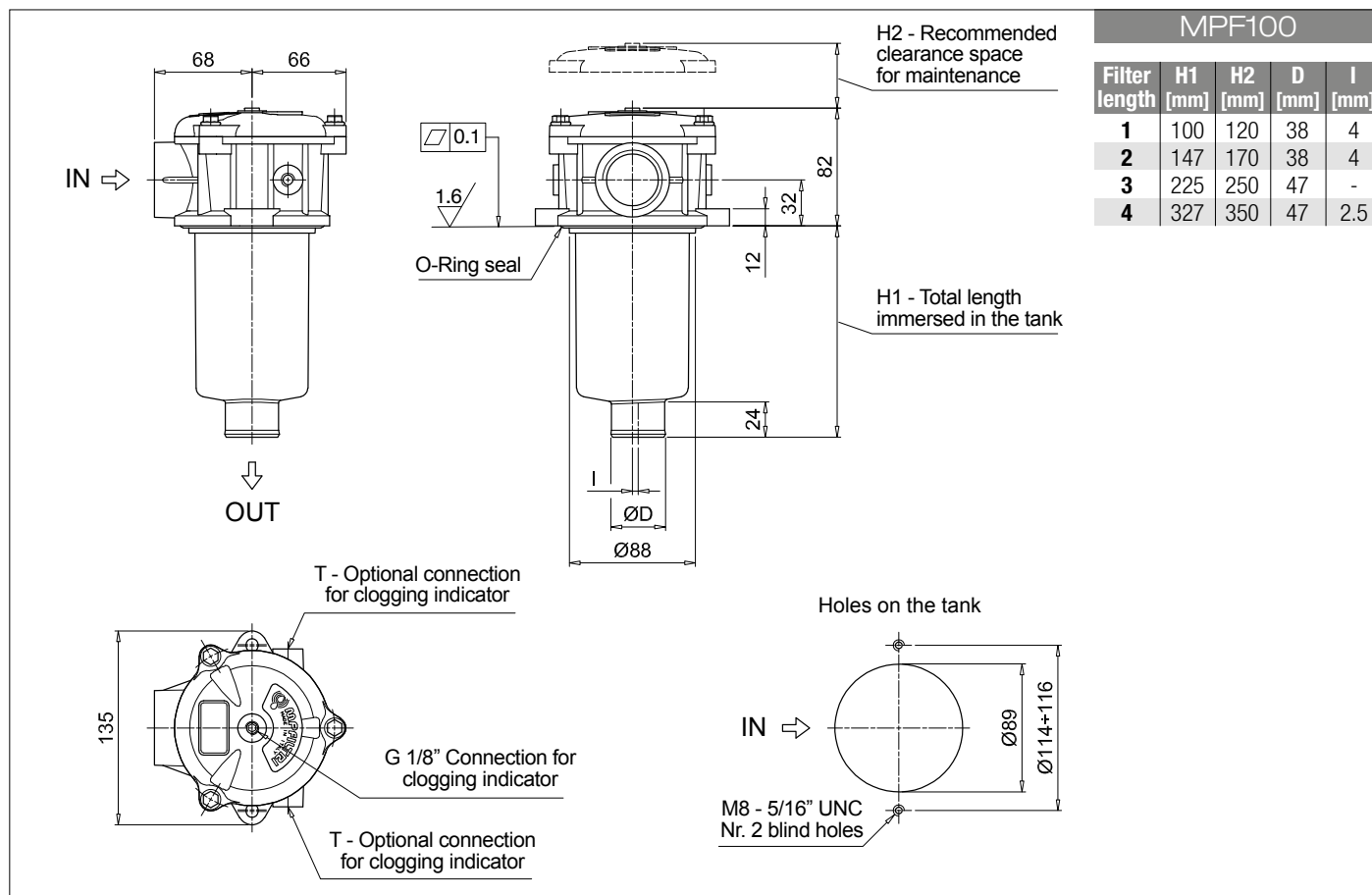
Series and size				Configuration example 1:				MPF100	2	W	G3	A06	W	B	P01								
MPF100 MPF104				Filter element with standard spigot				Configuration example 2:				MPF104	4	A	G8	P10	N	E	P01				
Length																							
1				2				3				4											
Seals and treatments																							
A				NBR																			
V				FPM																			
W				NBR head anodized																			
Z				FPM head anodized																			
Connections				Size 100		Size 104		Connections				Size 100		Size 104									
G1				G 1/2"		• •		G7				SAE 8 - 3/4" - 16 UNF		• •									
G2				G 3/4"		• •		G8				SAE 12 - 1 1/16" - 12 UN		• •									
G3				G 1"		• •		G9				SAE 16 - 1 5/16" - 12 UN		• •									
G4				1/2" NPT		• •		G10				G 1 1/4"		•									
G5				3/4" NPT		• •		G11				1 1/4" NPT		•									
G6				1" NPT		• •		G12				SAE 20 - 1 5/8" - 12 UN		•									
Filtration rating (filter media)																							
A03				Inorganic microfiber 3 µm		M25												Wire mesh 25 µm					
A06				Inorganic microfiber 6 µm		M60												Wire mesh 60 µm					
A10				Inorganic microfiber 10 µm		M90												Wire mesh 90 µm					
A16				Inorganic microfiber 16 µm		P10												Resin impregnated paper 10 µm					
A25				Inorganic microfiber 25 µm		P25												Resin impregnated paper 25 µm					
Element Δp						Filter media																	
N				10 bar		Axx		Mxx		Pxx													
H				10 bar		•		•															
W				10 bar, compatible with fluids HFA, HFB and HFC		•		•															
																				Bypass valve		Execution	
																				E 3 bar		P01 MP Filtri standard	
																				B 1.75 bar		Pxx Customized	

FILTER ELEMENT

Element series and size		Configuration example 1:		2	A06	W	B		P01
MF100		Configuration example 2:		4	P10	N	B	E	P01
Element length									
1	2	3	4						
Filtration rating (filter media)									
A03	Inorganic microfiber 3 µm	M25	Wire mesh 25 µm						
A06	Inorganic microfiber 6 µm	M60	Wire mesh 60 µm						
A10	Inorganic microfiber 10 µm	M90	Wire mesh 90 µm						
A16	Inorganic microfiber 16 µm	P10	Resin impregnated paper 10 µm						
A25	Inorganic microfiber 25 µm	P25	Resin impregnated paper 25 µm						
Element Δp		Filter media							
		Axx	Mxx	Pxx					
N	10 bar		•	•					
H	10 bar	•							
W	10 bar, compatible with fluids HFA, HFB and HFC	•	•						
		Seals		Bypass valve		Execution			
		B	NBR	E	3 bar	P01 MP Filtri standard			
		V	FPM		1.75 bar	Pxx Customized			

ACCESSORIES

Indicators		page			page
BVA		Axial pressure gauge	240	BEA	
BVR		Radial pressure gauge	240	BEM	
BVP		Visual pressure indicator with automatic reset	241	BLA	
BVQ		Visual pressure indicator with manual reset	241		
Additional features		page			page
TE		Extension tube	248	T5	
DFS		Diffuser with fast lock connection	249	DPT	



Designation & Ordering code

COMPLETE FILTER

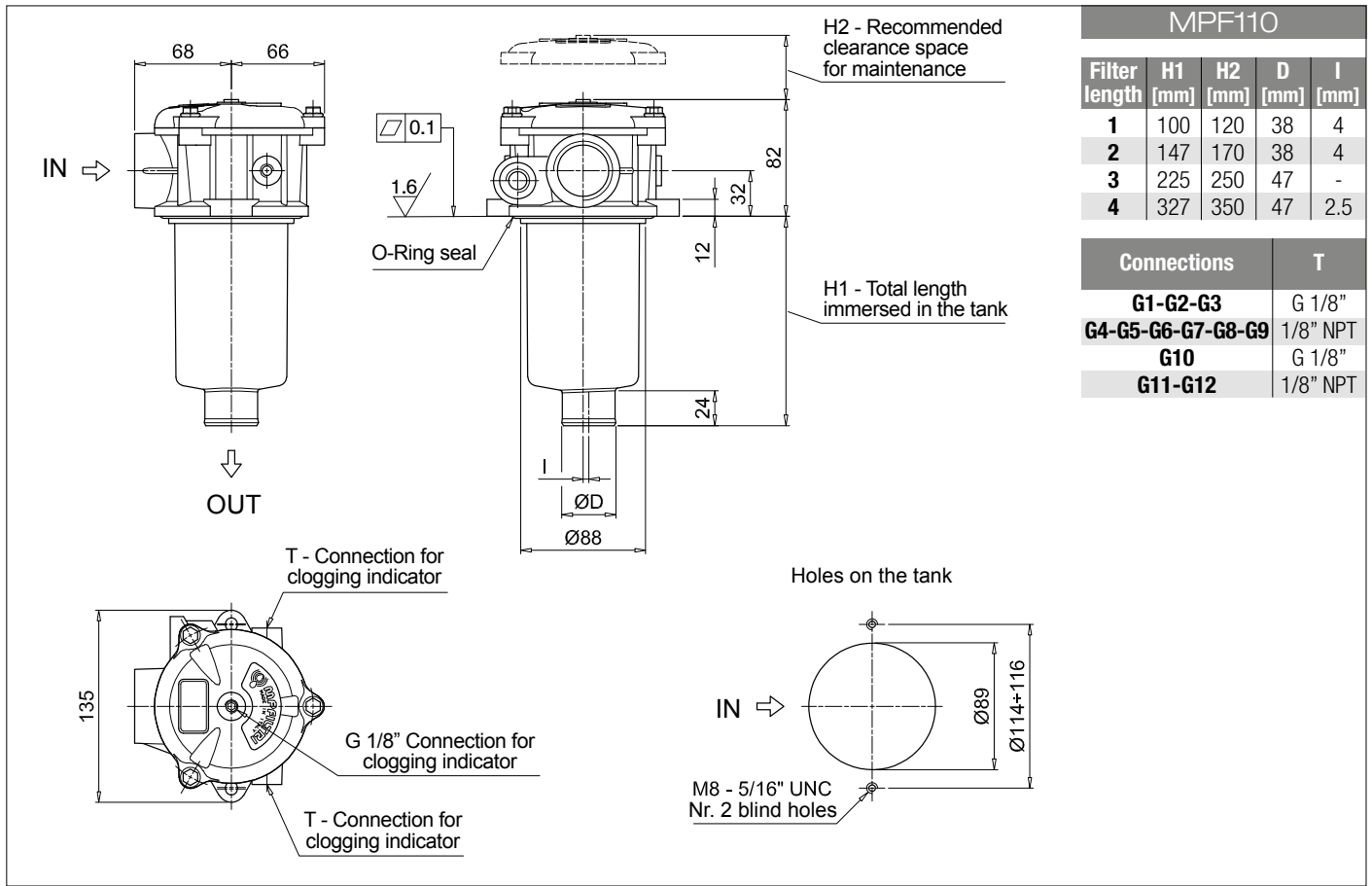
Series and size			Configuration example 1:										
MPF110 Filter element with standard spigot			Configuration example 2:										
			MPF110	2	A	G2	1	A16	H	E	P01		
			MPF110	4	V	G12	1	M60	N	B	P01		
Length													
1 2 3 4													
Seals and treatments													
A NBR			W NBR head anodized										
V FPM			Z FPM head anodized										
Main Connections			Aux size 1		Aux size 2		Main Connections			Aux size 1		Aux size 2	
G1 G 1/2"			G 3/8"		G 1/2"		G7 SAE 8 - 3/4" - 16 UNF			SAE 6 - 9/16" - 18 UNF		SAE 8 - 3/4" - 16 UNF	
G2 G 3/4"													
G3 G 1"													
G4 1/2" NPT			3/8" NPT		1/2" NPT		G9 SAE 16 - 1 5/16" - 12 UNF						
G5 3/4" NPT													
G6 1" NPT													
G10 G 1 1/4"							G11 1 1/4" NPT			G 3/8"		G 1/2"	
G12 SAE 20 - 1 5/8" - 12 UNF							3/8" NPT			1/2" NPT			
							SAE 6 - 9/16" - 18 UNF			SAE 8 - 3/4" - 16 UNF			
Aux connection - see previous table													
1 Aux size 1			2 Aux size 2										
Filtration rating (filter media)													
A03 Inorganic microfiber 3 µm			M25 Wire mesh 25 µm										
A06 Inorganic microfiber 6 µm			M60 Wire mesh 60 µm										
A10 Inorganic microfiber 10 µm			M90 Wire mesh 90 µm										
A16 Inorganic microfiber 16 µm			P10 Resin impregnated paper 10 µm										
A25 Inorganic microfiber 25 µm			P25 Resin impregnated paper 25 µm										
Filter media													
Element Δp			Axx		Mxx		Pxx						
N 10 bar					•		•						
H 10 bar			•										
W 10 bar, compatible with fluids HFA, HFB and HFC			•		•								
Bypass valve													
E 3 bar			P01 MP Filtri standard										
B 1.75 bar			Pxx Customized										

FILTER ELEMENT

Element series and size			Configuration example 1:						
MF100	Filter element with standard spigot		MF100	2	A16	H	B	E	P01
			Configuration example 2:						
			MF100	4	M60	N	V		P01
Element length									
1	2	3	4						
Filtration rating (filter media)									
A03	Inorganic microfiber	3 µm	M25	Wire mesh 25 µm					
A06	Inorganic microfiber	6 µm	M60	Wire mesh 60 µm					
A10	Inorganic microfiber	10 µm	M90	Wire mesh 90 µm					
A16	Inorganic microfiber	16 µm	P10	Resin impregnated paper 10 µm					
A25	Inorganic microfiber	25 µm	P25	Resin impregnated paper 25 µm					
Element Δp			Filter media						
N	10 bar		Axx	Mxx	Pxx				
H	10 bar		•		•				
W	10 bar, compatible with fluids HFA, HFB and HFC		•	•					
			Seals		Bypass valve		Execution		
			B NBR		E 3 bar		P01 MP Filtri standard		
			V FPM		1.75 bar		Pxx Customized		

ACCESSORIES

Indicators		page			page
BVA	Axial pressure gauge	240	BEA	Electrical pressure indicator	239
BVR	Radial pressure gauge	240	BEM	Electrical pressure indicator	239
BVP	Visual pressure indicator with automatic reset	241	BLA	Electrical / visual pressure indicator	239-240
BVQ	Visual pressure indicator with manual reset	241			
Additional features		page			page
TE	Extension tube	248	T5	Filler plug M30x1.5	249
DFS	Diffuser with fast lock connection	249	DPT	Dipstick	249



MPF MPF181 - MPF191

Designation & Ordering code

COMPLETE FILTER

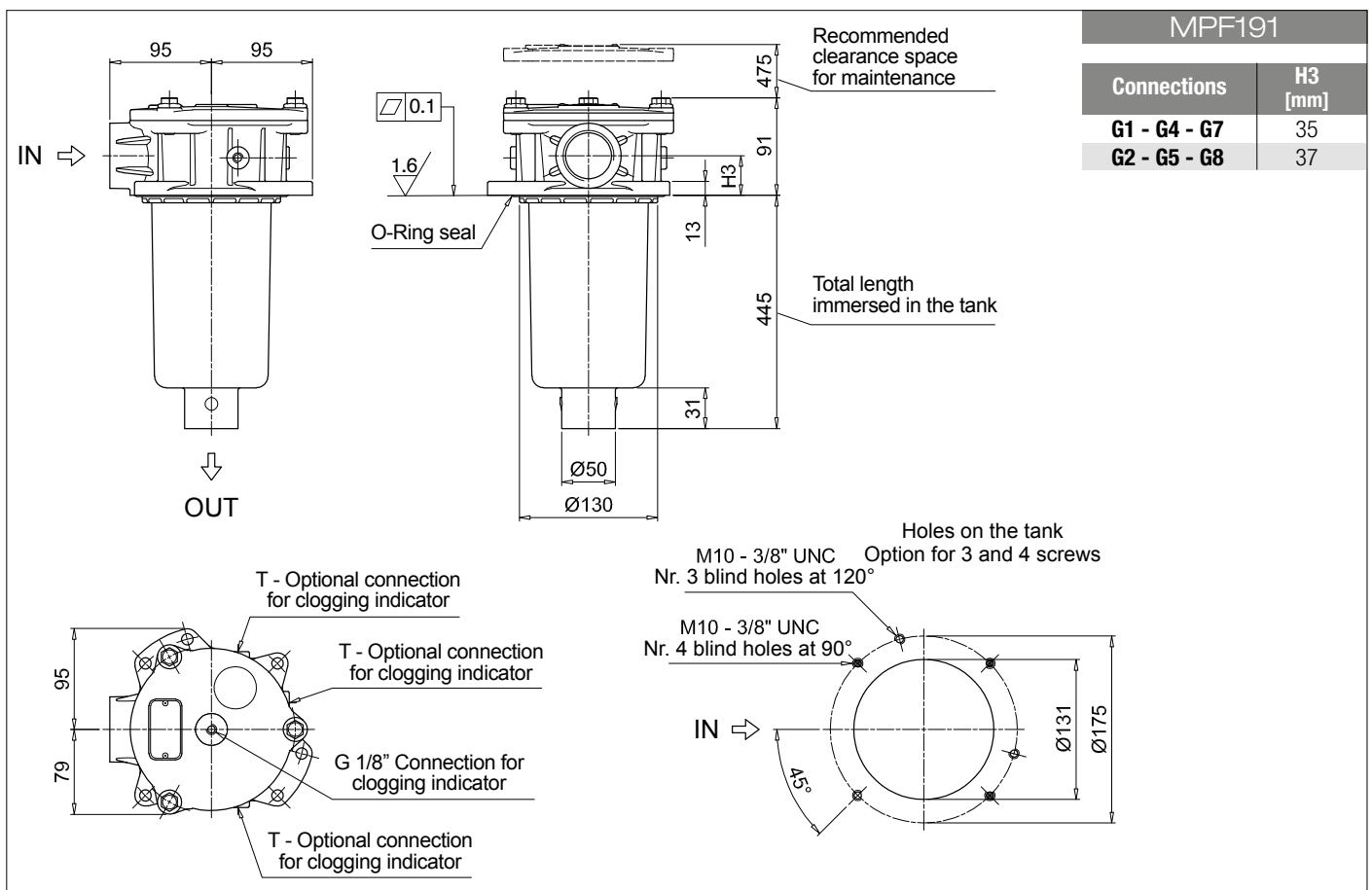
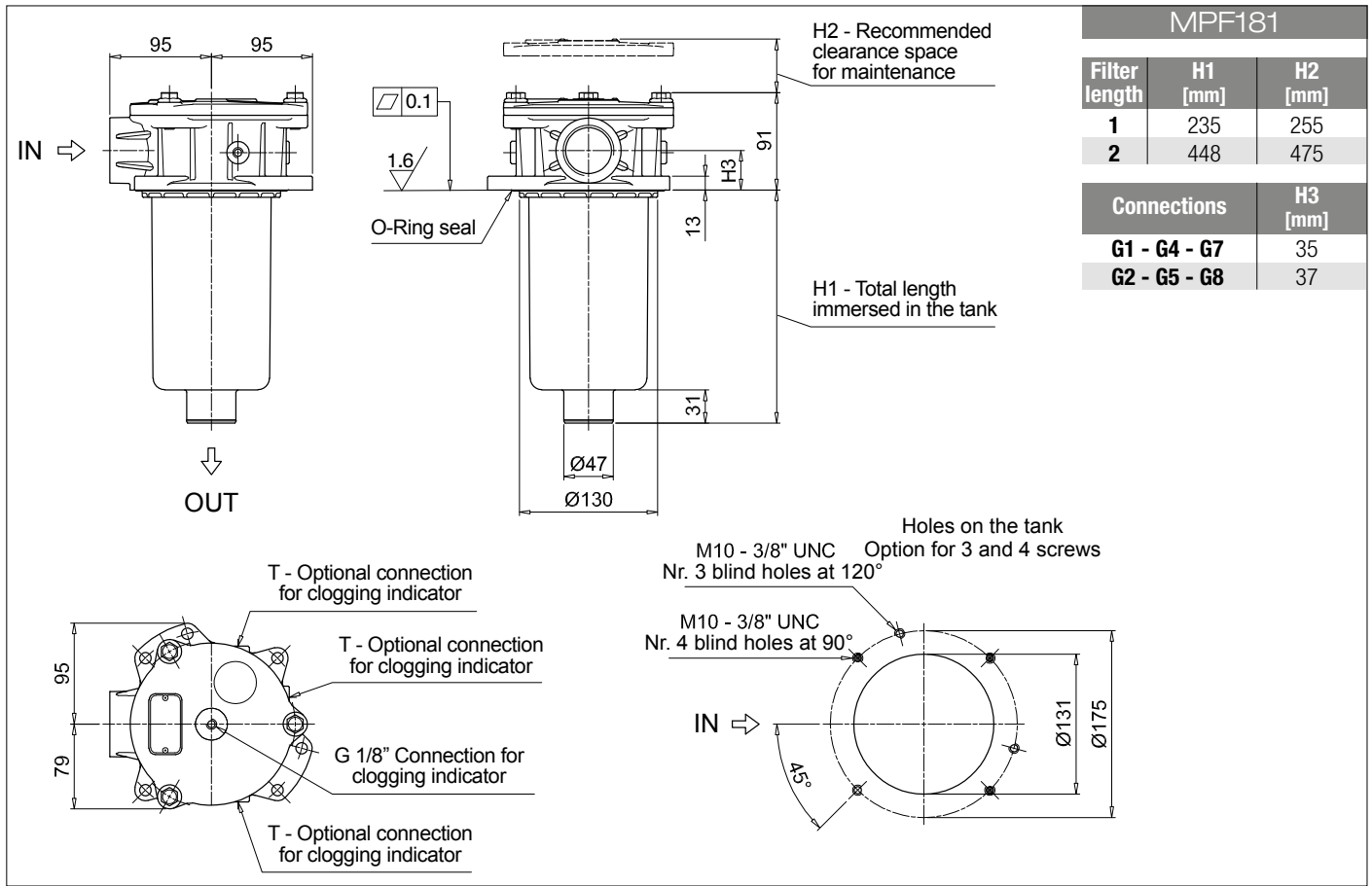
Series and size			Configuration example 1:									
MPF181 MPF191 Filter element with standard spigot			Configuration example 2:									
Length			Size 181		Size 191							
1			•									
2			•		•							
Seals and treatments												
A NBR			B NBR flat seal on head									
V FPM			D FPM flat seal on head									
W NBR head anodized			L NBR head anodized, flat seal on head									
Z FPM head anodized			M FPM head anodized, flat seal on head									
Connections												
G1 G 1 1/4"			G5 1 1/2" NPT									
G2 G 1 1/2"			G7 SAE 20 - 1 5/8" - 12 UN									
G4 1 1/4" NPT			G8 SAE 24 - 1 7/8" - 12 UN									
Filtration rating (filter media)												
A03 Inorganic microfiber 3 µm			M25 Wire mesh 25 µm									
A06 Inorganic microfiber 6 µm			M60 Wire mesh 60 µm									
A10 Inorganic microfiber 10 µm			M90 Wire mesh 90 µm									
A16 Inorganic microfiber 16 µm			P10 Resin impregnated paper 10 µm									
A25 Inorganic microfiber 25 µm			P25 Resin impregnated paper 25 µm									
			Filter media									
Element Δp			Axx	Mxx	Pxx							
N 10 bar				•	•							
H 10 bar				•								
W 10 bar, compatible with fluids HFA, HFB and HFC			•	•								
			Bypass valve									
			E 3 bar									
			B 1.75 bar									
			Execution									
			P01 MP Filtri standard									
			Pxx Customized									

FILTER ELEMENT

Element series and size			Configuration example 1:		MF180	1	A25	H	B	E	P01
MF180 MF190 Filter element with standard spigot			Configuration example 2:		MF190	2	P10	N	V		P01
Element length		Size 180	Size 190								
1		•									
2		•	•								
Filtration rating (filter media)											
A03 Inorganic microfiber 3 µm		M25 Wire mesh 25 µm									
A06 Inorganic microfiber 6 µm		M60 Wire mesh 60 µm									
A10 Inorganic microfiber 10 µm		M90 Wire mesh 90 µm									
A16 Inorganic microfiber 16 µm		P10 Resin impregnated paper 10 µm									
A25 Inorganic microfiber 25 µm		P25 Resin impregnated paper 25 µm									
Element Δp		Filter media									
		Axx	Mxx	Pxx							
N	10 bar		•	•							
H	10 bar		•								
W	10 bar, compatible with fluids HFA, HFB and HFC	•	•								
					Seals		Bypass valve		Execution		
					B NBR		E 3 bar		P01 MP Filtri standard		
					V FPM		1.75 bar		Pxx Customized		

ACCESSORIES

Indicators		page			page
BVA	Axial pressure gauge	240	BEA	Electrical pressure indicator	239
BVR	Radial pressure gauge	240	BEM	Electrical pressure indicator	239
BVP	Visual pressure indicator with automatic reset	241	BLA	Electrical / visual pressure indicator	239-240
BVQ	Visual pressure indicator with manual reset	241			
Additional features		page			
TE	Extension tube	248			
Sxx	Extension tube	248			
T5	Filler plug M30x1.5	249			



MPF MPF182 - MPF192

Designation & Ordering code

COMPLETE FILTER

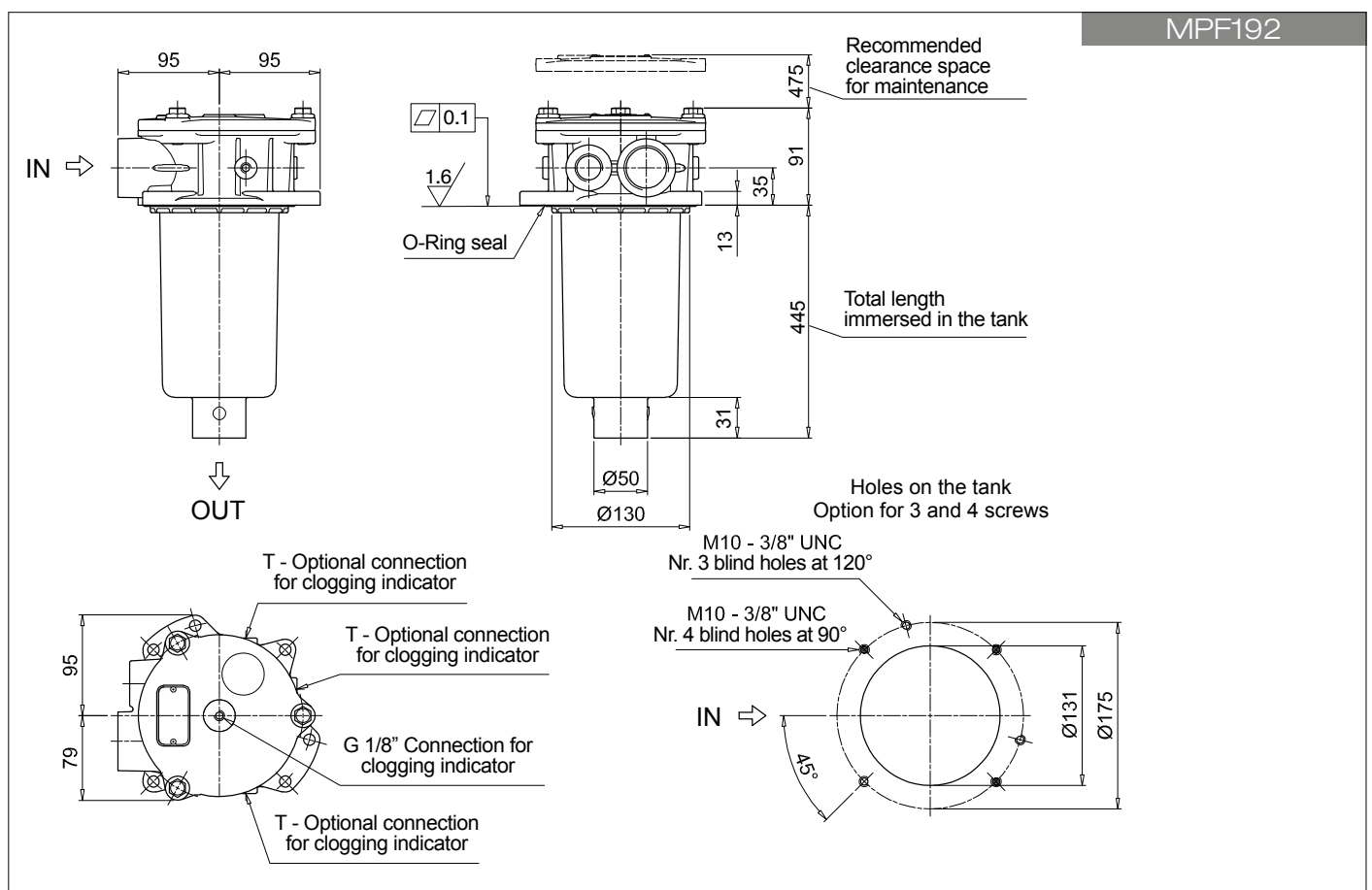
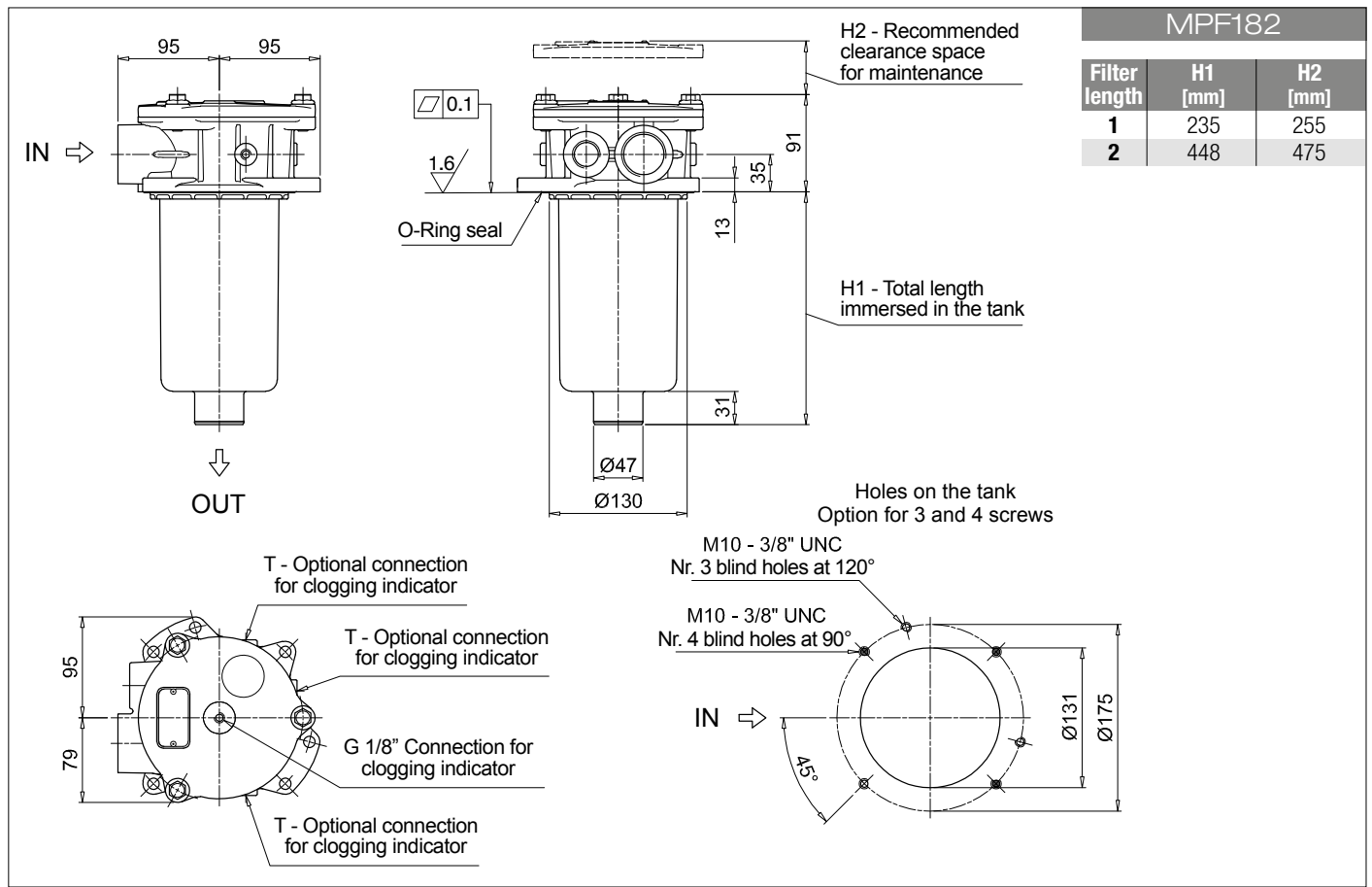
Series and size			Configuration example 1:									
MPF182 MPF192			Filter element with standard spigot									
			Configuration example 2:									
			MPF182	1	A	G1	1	A25	H	E	P01	
			MPF192	2	V	G4	2	P10	N	B	P01	
Length			Size 182	Size 192								
1			•									
2			•	•								
Seals and treatments												
A	NBR		B	NBR	flat seal on head							
V	FPM		D	FPM	flat seal on head							
W	NBR	head anodized	L	NBR	head anodized, flat seal on head							
Z	FPM	head anodized	M	FPM	head anodized, flat seal on head							
Main Connections			Aux size 1		Aux size 2							
G1	G 1 1/4"		G 1/2"		G 3/4"							
G4	1 1/4" NPT		1/2" NPT		3/4" NPT							
G7	SAE 20 - 1 5/8" - 12 UN		SAE 8 - 3/16" - 16 UNF		SAE 12 - 1 1/16" - 12 UN							
Aux connection - see previous table												
1 Aux size 1			2 Aux size 2									
Filtration rating (filter media)												
A03 Inorganic microfiber 3 µm			M25 Wire mesh 25 µm									
A06 Inorganic microfiber 6 µm			M60 Wire mesh 60 µm									
A10 Inorganic microfiber 10 µm			M90 Wire mesh 90 µm									
A16 Inorganic microfiber 16 µm			P10 Resin impregnated paper 10 µm									
A25 Inorganic microfiber 25 µm			P25 Resin impregnated paper 25 µm									
			Filter media									
Element Δp			Axx	Mxx	Pxx							
N 10 bar				•	•							
H 10 bar				•								
W 10 bar, compatible with fluids HFA, HFB and HFC			•	•								
						Bypass valve		Execution				
						E 3 bar		P01 MP Filtri standard				
						B 1.75 bar		Pxx Customized				

FILTER ELEMENT

Element series and size			Configuration example 1: MF180 1 A25 H B E P01							
MF180 MF190 Filter element with standard spigot			Configuration example 2: MF190 2 P10 N V P01							
Element length		Size 180	Size 190							
1		•								
2		•	•							
Filtration rating (filter media)										
A03 Inorganic microfiber 3 µm		M25 Wire mesh 25 µm								
A06 Inorganic microfiber 6 µm		M60 Wire mesh 60 µm								
A10 Inorganic microfiber 10 µm		M90 Wire mesh 90 µm								
A16 Inorganic microfiber 16 µm		P10 Resin impregnated paper 10 µm								
A25 Inorganic microfiber 25 µm		P25 Resin impregnated paper 25 µm								
Element Δp			Filter media							
N	10 bar		Axx	Mxx	Pxx					
H	10 bar			•	•					
W	10 bar, compatible with fluids HFA, HFB and HFC		•	•						
Seals			Bypass valve			Execution				
B NBR			E 3 bar			P01 MP Filtri standard				
V FPM			1.75 bar			Pxx Customized				

ACCESSORIES

Indicators		page			page
BVA	Axial pressure gauge	240	BEA	Electrical pressure indicator	239
BVR	Radial pressure gauge	240	BEM	Electrical pressure indicator	239
BVP	Visual pressure indicator with automatic reset	241	BLA	Electrical / visual pressure indicator	239-240
BVQ	Visual pressure indicator with manual reset	241			
Additional features		page			
TE	Extension tube	248			
Sxx	Extension tube	248			
T5	Filler plug M30x1.5	249			



MPF MPF184 - MPF194

Designation & Ordering code

COMPLETE FILTER

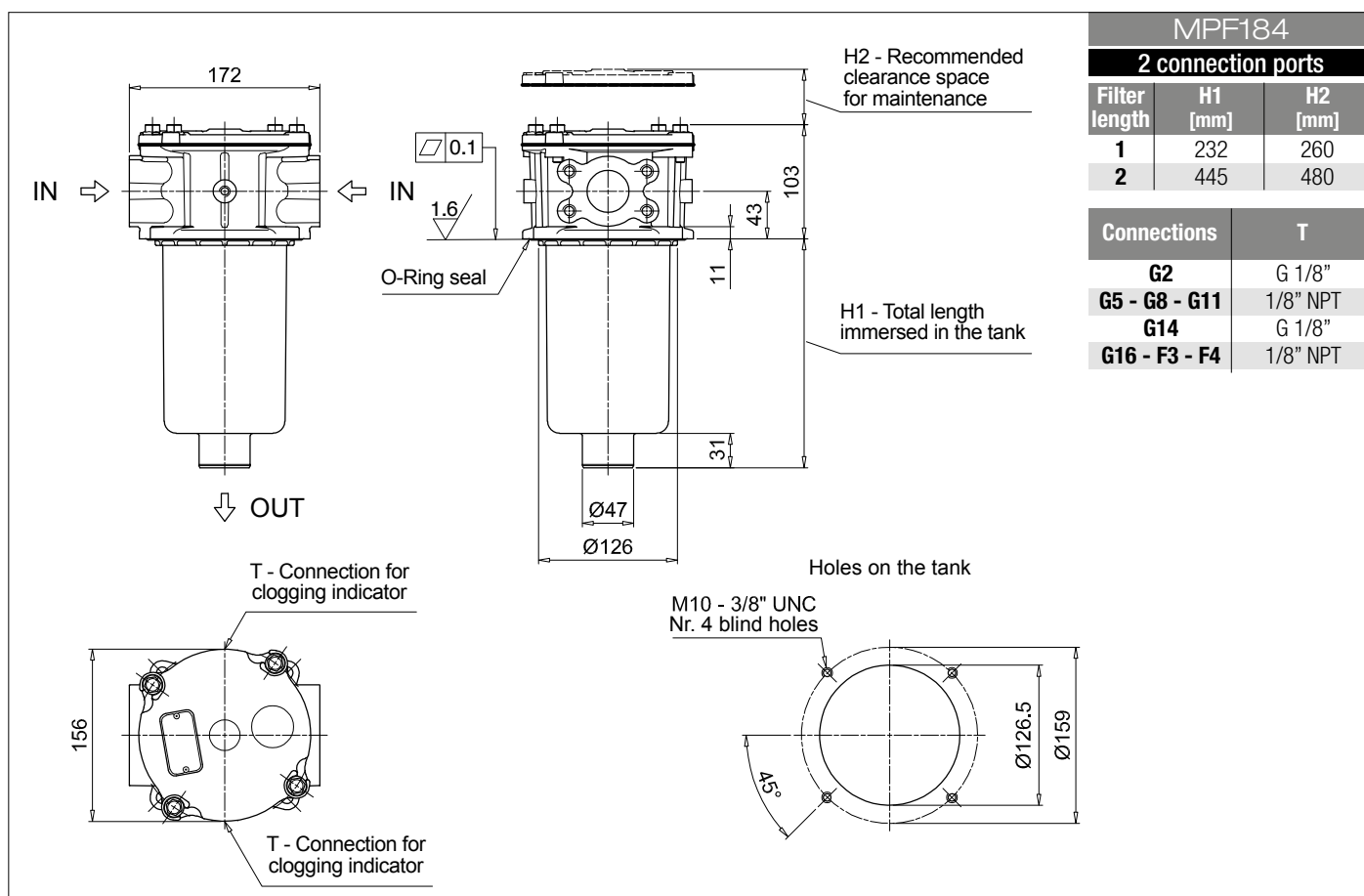
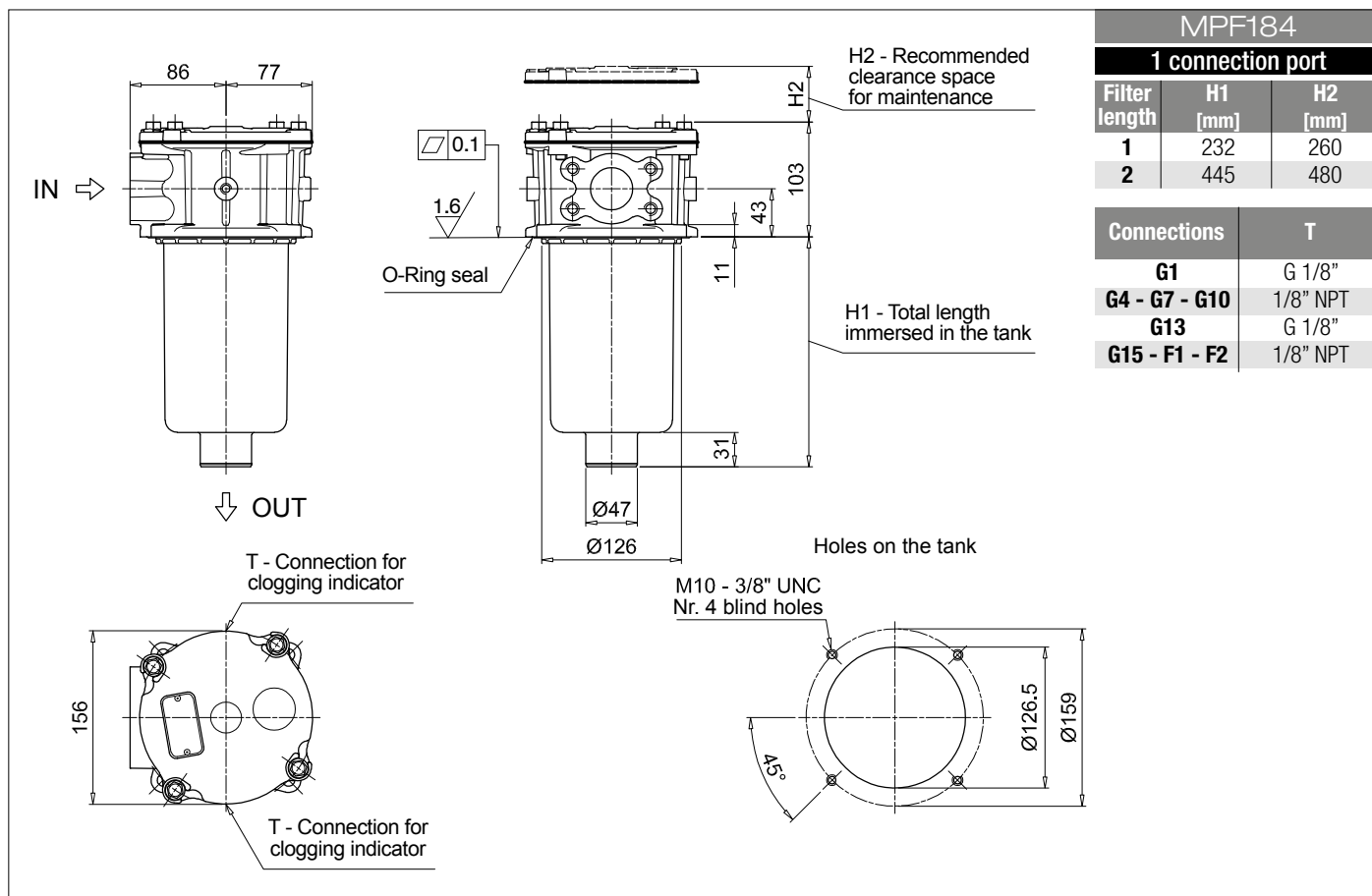
Series and size			Configuration example 1:																			
MPF184 MPF194			Filter element with standard spigot																			
Length			Size 184		Size 194		Configuration example 2:															
1			•				MPF184		1		A		G1		A25		H		E		P01	
2			•		•				2		V		F3		P10		N		B		P01	
Seals and treatments																						
A NBR			W NBR		head anodized																	
V FPM			Z FPM		head anodized																	
Main Connections			Rear connections			Main Connections			Rear connections													
G1 G 1 1/4"			-			G13 G 1 1/2"			-													
G2 G 1 1/4"			G 1 1/4"			G14 G 1 1/2"			G 1 1/4"													
G4 1 1/4" NPT			-			G15 1 1/2" NPT			-													
G5 1 1/4" NPT			1 1/4" NPT			G16 1 1/2" NPT			1 1/4" NPT													
G7 SAE 20 - 1 5/8" - 12 UN			-			F1 1 1/2" SAE 3000 psi/M			-													
G8 SAE 20 - 1 5/8" - 12 UN			SAE 20 - 1 5/8" - 12 UN			F2 1 1/2" SAE 3000 psi/UNC			-													
G10 SAE 24 - 1 7/8" - 12 UN			-			F3 1 1/2" SAE 3000 psi/M			1 1/2" SAE 3000 psi/M													
G11 SAE 24 - 1 7/8" - 12 UN			SAE 20 - 1 5/8" - 12 UN			F4 1 1/2" SAE 3000 psi/UNC			1 1/2" SAE 3000 psi/UNC													
Filtration rating (filter media)																						
A03 Inorganic microfiber 3 µm			M25 Wire mesh 25 µm																			
A06 Inorganic microfiber 6 µm			M60 Wire mesh 60 µm																			
A10 Inorganic microfiber 10 µm			M90 Wire mesh 90 µm																			
A16 Inorganic microfiber 16 µm			P10 Resin impregnated paper 10 µm																			
A25 Inorganic microfiber 25 µm			P25 Resin impregnated paper 25 µm																			
Element Δp			Filter media																			
N 10 bar			Axx Mxx Pxx																			
H 10 bar			•																			
W 10 bar, compatible with fluids HFA, HFB and HFC			• •																			
						Bypass valve		Execution														
						E 3 bar		P01 MP Filtri standard														
						B 1.75 bar		Pxx Customized														

FILTER ELEMENT

Element series and size			Configuration example 1: MF1801A25HEBP01								
MF180MF190Filter element with standard spigot			Configuration example 2: MF1902P10NV P01								
Element length		Size 180	Size 190								
1		•									
2		•	•								
Filtration rating (filter media)											
A03		Inorganic microfiber	3 µm	M25		Wire mesh	25 µm				
A06		Inorganic microfiber	6 µm	M60		Wire mesh	60 µm				
A10		Inorganic microfiber	10 µm	M90		Wire mesh	90 µm				
A16		Inorganic microfiber	16 µm	P10		Resin impregnated paper	10 µm				
A25		Inorganic microfiber	25 µm	P25		Resin impregnated paper	25 µm				
Element Δp			Filter media								
			Axx	Mxx	Pxx						
N	10 bar			•	•						
H	10 bar		•								
W	10 bar, compatible with fluids HFA, HFB and HFC		•	•							
						Seals		Bypass valve		Execution	
						B	NBR	E	3 bar	P01	MP Filtri standard
						V	FPM		1.75 bar	Pxx	Customized

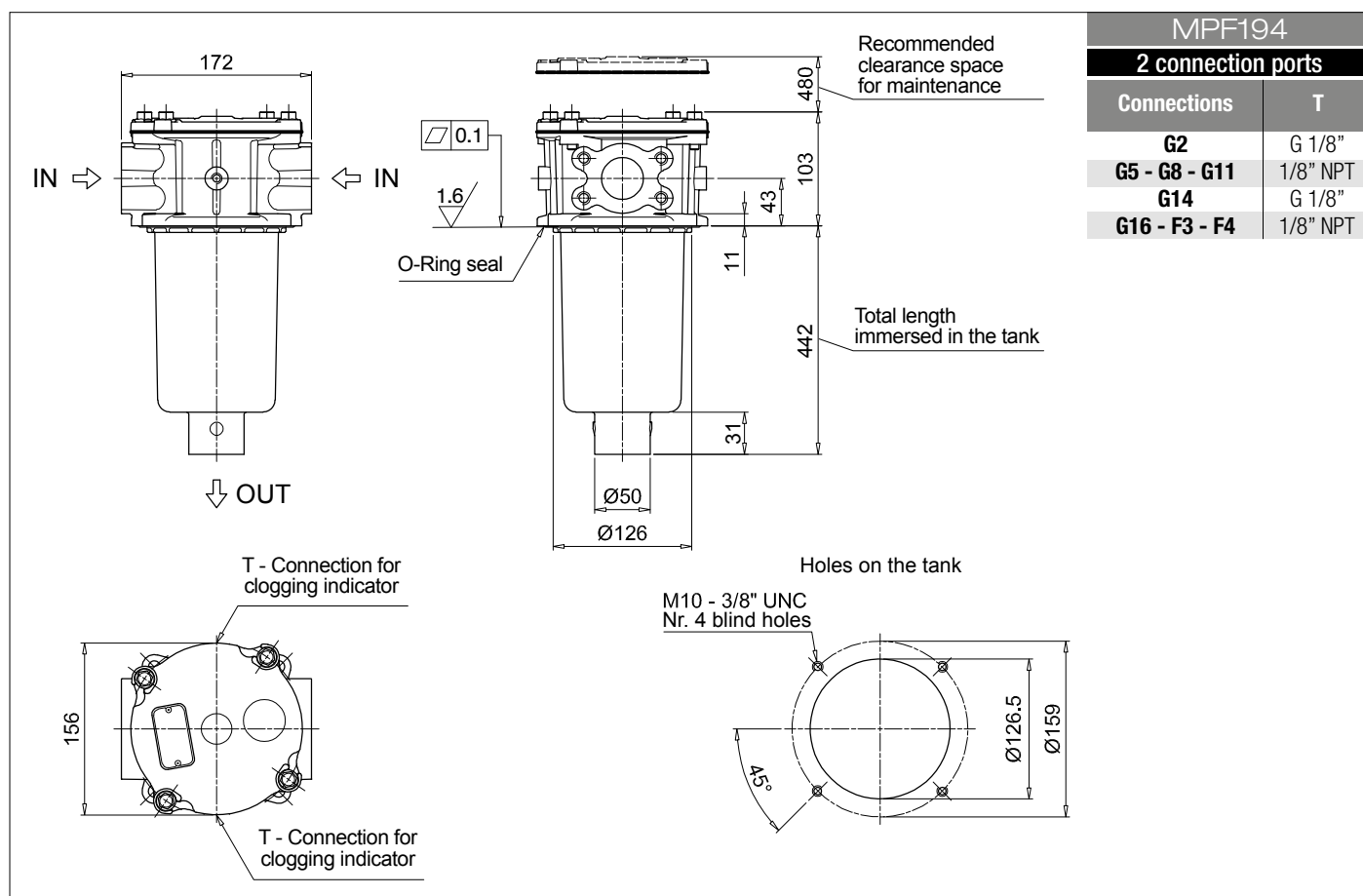
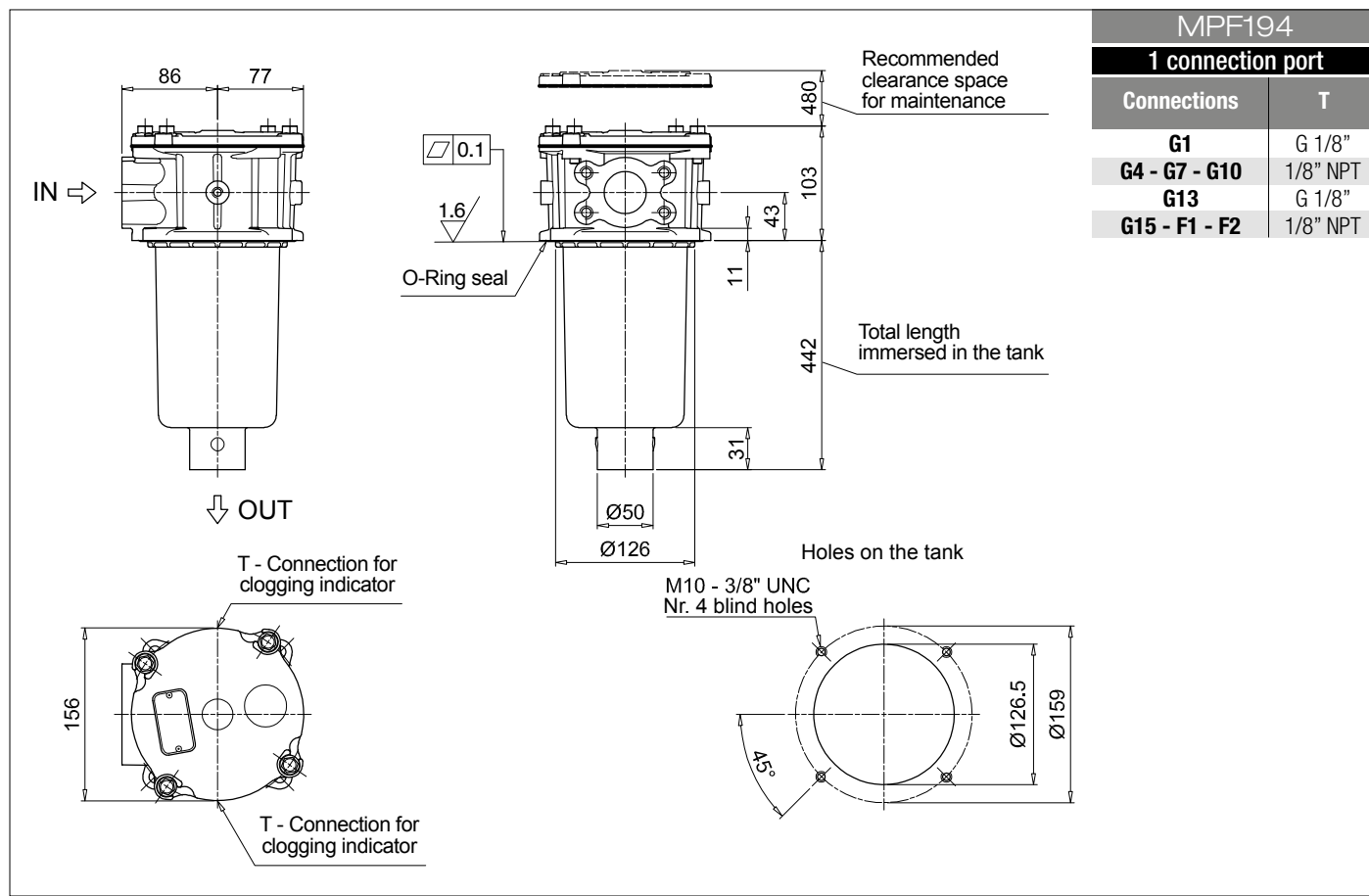
ACCESSORIES

Indicators		page			page
BVA	Axial pressure gauge	240	BEA	Electrical pressure indicator	239
BVR	Radial pressure gauge	240	BEM	Electrical pressure indicator	239
BVP	Visual pressure indicator with automatic reset	241	BLA	Electrical / visual pressure indicator	239-240
BVQ	Visual pressure indicator with manual reset	241			
Additional features		page			
TE	Extension tube	248			
Sxx	Extension tube	248			
T5	Filler plug M30x1.5	249			



MPF MPF184 - MPF194

Dimensions



Designation & Ordering code

COMPLETE FILTER

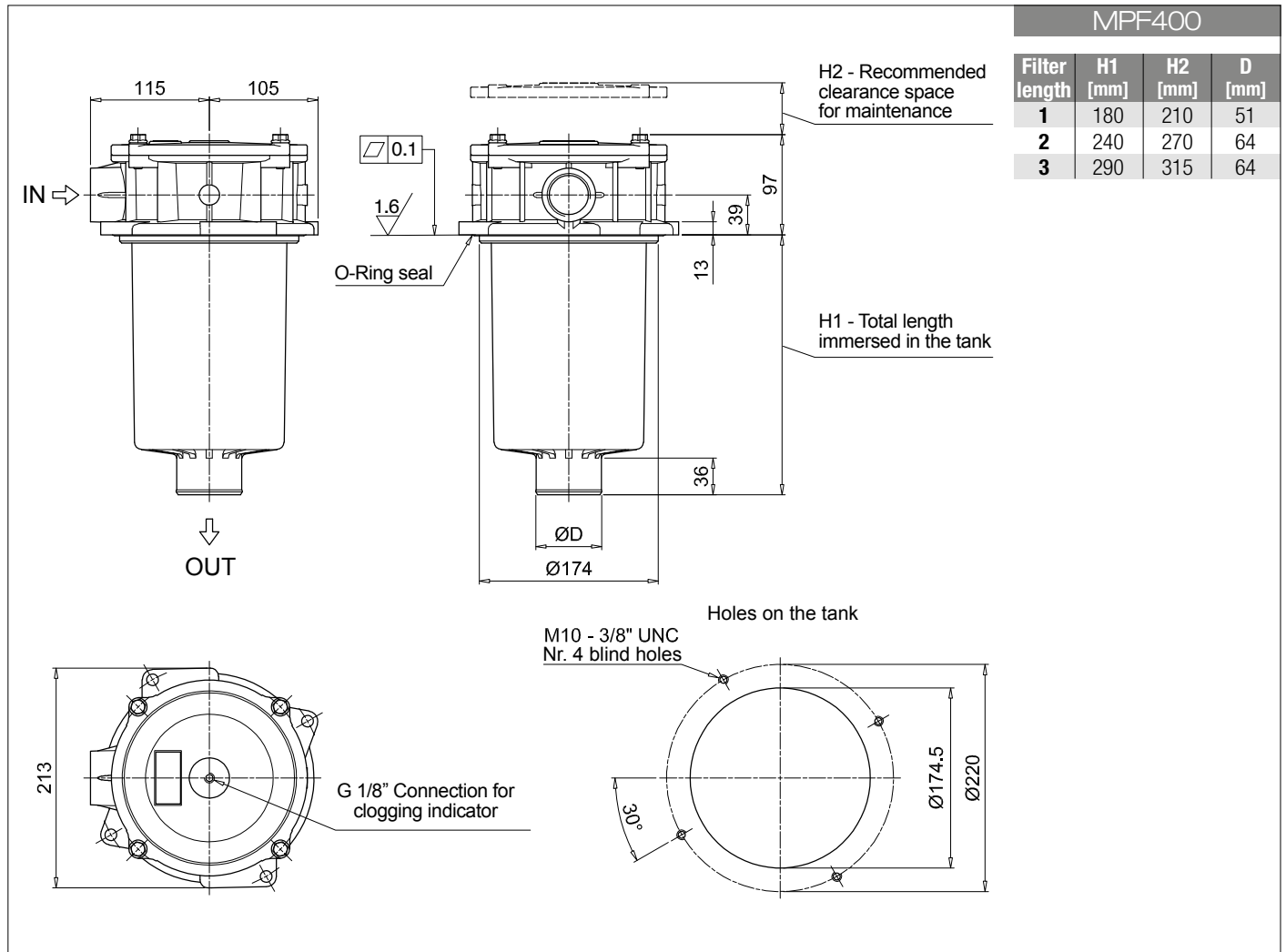
Series and size		Configuration example 1:	MPF400	1	A	G9	A25	H	B	P01
MPF400 Filter element with standard spigot		Configuration example 2:	MPF400	2	V	G4	P10	N	E	P01
Length										
1 2 3										
Seals and treatments										
A NBR										
V FPM										
W NBR head anodized										
Z FPM head anodized										
Connections										
G1 G 1 1/4"	G6 2" NPT									
G2 G 1 1/2"	G7 SAE 20 - 1 5/8" - 12 UN									
G3 G 2"	G8 SAE 24 - 1 7/8" - 12 UN									
G4 1 1/4" NPT	G9 SAE 32 - 2 1/2" - 12 UN									
G5 1 1/2" NPT										
Filtration rating (filter media)										
A03 Inorganic microfiber 3 µm	M25 Wire mesh 25 µm									
A06 Inorganic microfiber 6 µm	M60 Wire mesh 60 µm									
A10 Inorganic microfiber 10 µm	M90 Wire mesh 90 µm									
A16 Inorganic microfiber 16 µm	P10 Resin impregnated paper 10 µm									
A25 Inorganic microfiber 25 µm	P25 Resin impregnated paper 25 µm									
Element Δp		Filter media								
N 10 bar		Axx	Mxx	Pxx						
H 10 bar			•	•						
W 10 bar, compatible with fluids HFA, HFB and HFC		•	•							
					Bypass valve	Execution				
					E 3 bar	P01 MP Filtri standard				
					B 1.75 bar	Pxx Customized				

FILTER ELEMENT

Element series and size		Configuration example 1:	MF400	1	A25	H	B		P01
MF400 Filter element with standard spigot		Configuration example 2:	MF400	2	P10	N	V	E	P01
Element length									
1 2 3									
Filtration rating (filter media)									
A03 Inorganic microfiber 3 µm	M25 Wire mesh 25 µm								
A06 Inorganic microfiber 6 µm	M60 Wire mesh 60 µm								
A10 Inorganic microfiber 10 µm	M90 Wire mesh 90 µm								
A16 Inorganic microfiber 16 µm	P10 Resin impregnated paper 10 µm								
A25 Inorganic microfiber 25 µm	P25 Resin impregnated paper 25 µm								
Element Δp		Filter media							
N 10 bar		Axx	Mxx	Pxx					
H 10 bar			•	•					
W 10 bar, compatible with fluids HFA, HFB and HFC		•	•						
					Seals	Bypass valve	Execution		
					B NBR	E 3 bar	P01 MP Filtri standard		
					V FPM	1.75 bar	Pxx Customized		

ACCESSORIES

Indicators		page			page
BVA	Axial pressure gauge	240	BEA	Electrical pressure indicator	239
BVR	Radial pressure gauge	240	BEM	Electrical pressure indicator	239
BVP	Visual pressure indicator with automatic reset	241	BLA	Electrical / visual pressure indicator	239-240
BVQ	Visual pressure indicator with manual reset	241			
Additional features		page			
Sxx	Extension tube	248			
T5	Filler plug M30x1.5	249			



Designation & Ordering code

COMPLETE FILTER

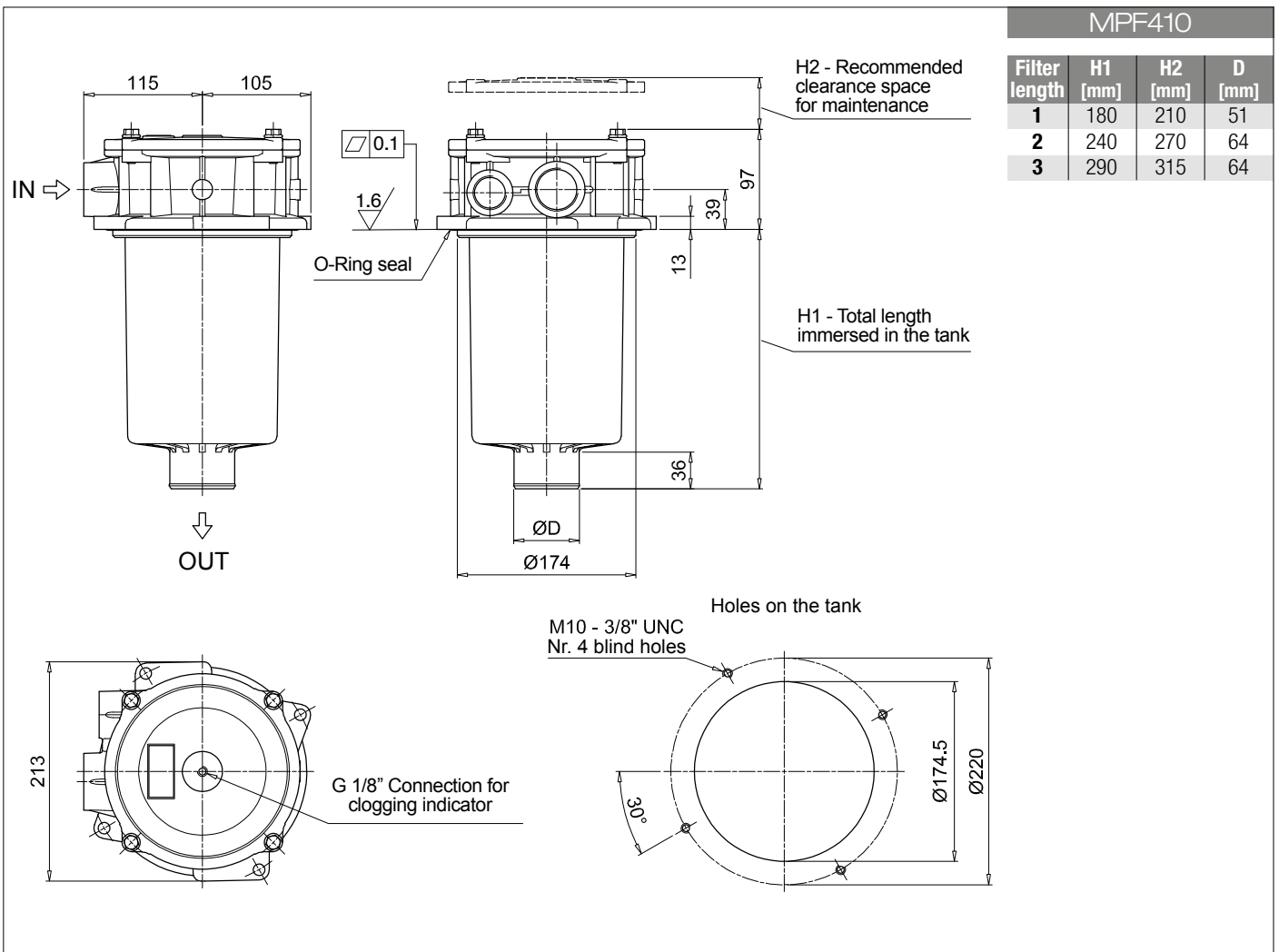
Series and size		Configuration example 1:		MPF410	1	A	G1	1	A25	H	B	P01
MPF410 Filter element with standard spigot		Configuration example 2:		MPF410	1	V	G4	1	P10	N	E	P01
Length												
1 2 3												
Seals and treatments												
A NBR												
V FPM												
W NBR head anodized												
Z FPM head anodized												
Main Connections		Aux size 1										
G1 G 1 1/4"		G 1"										
G4 1 1/4" NPT		1" NPT										
G7 SAE 20 - 1 5/8" - 12 UN		SAE 16 - 1 5/16" - 12 UN										
Aux connection - see previous table												
1 Aux size 1												
Filtration rating (filter media)												
A03 Inorganic microfiber 3 µm		M25 Wire mesh 25 µm										
A06 Inorganic microfiber 6 µm		M60 Wire mesh 60 µm										
A10 Inorganic microfiber 10 µm		M90 Wire mesh 90 µm										
A16 Inorganic microfiber 16 µm		P10 Resin impregnated paper 10 µm										
A25 Inorganic microfiber 25 µm		P25 Resin impregnated paper 25 µm										
Element Δp		Filter media										
N 10 bar		Axx	Mxx	Pxx								
H 10 bar			•	•								
W 10 bar, compatible with fluids HFA, HFB and HFC		•	•									
				Bypass valve		Execution						
				E 3 bar		P01 MP Filtri standard						
				B 1.75 bar		Pxx Customized						

FILTER ELEMENT

Element series and size		Configuration example 1:	MF400	1	A25	H	B		P01
MF400 Filter element with standard spigot		Configuration example 2:	MF400	1	P10	N	V	E	P01
Element length									
1 2 3									
Filtration rating (filter media)									
A03 Inorganic microfiber 3 µm									
A06 Inorganic microfiber 6 µm									
A10 Inorganic microfiber 10 µm									
A16 Inorganic microfiber 16 µm									
A25 Inorganic microfiber 25 µm									
M25 Wire mesh 25 µm									
M60 Wire mesh 60 µm									
M90 Wire mesh 90 µm									
P10 Resin impregnated paper 10 µm									
P25 Resin impregnated paper 25 µm									
Element Δp		Filter media							
N 10 bar		Axx	Mxx	Pxx					
H 10 bar			•	•					
W 10 bar, compatible with fluids HFA, HFB and HFC		•	•						
		Seals		Bypass valve		Execution			
		B NBR		E 3 bar		P01 MP Filtri standard			
		V FPM		1.75 bar		Pxx Customized			

ACCESSORIES

Indicators		page		page
BVA	Axial pressure gauge	240	BEA	Electrical pressure indicator 239
BVR	Radial pressure gauge	240	BEM	Electrical pressure indicator 239
BVP	Visual pressure indicator with automatic reset	241	BLA	Electrical / visual pressure indicator 239-240
BVQ	Visual pressure indicator with manual reset	241		
Additional features		page		
Sxx	Extension tube	248		
T5	Filler plug M30x1.5	249		



MPF MPF450 - MPF451 - MPF750

Designation & Ordering code

COMPLETE FILTER

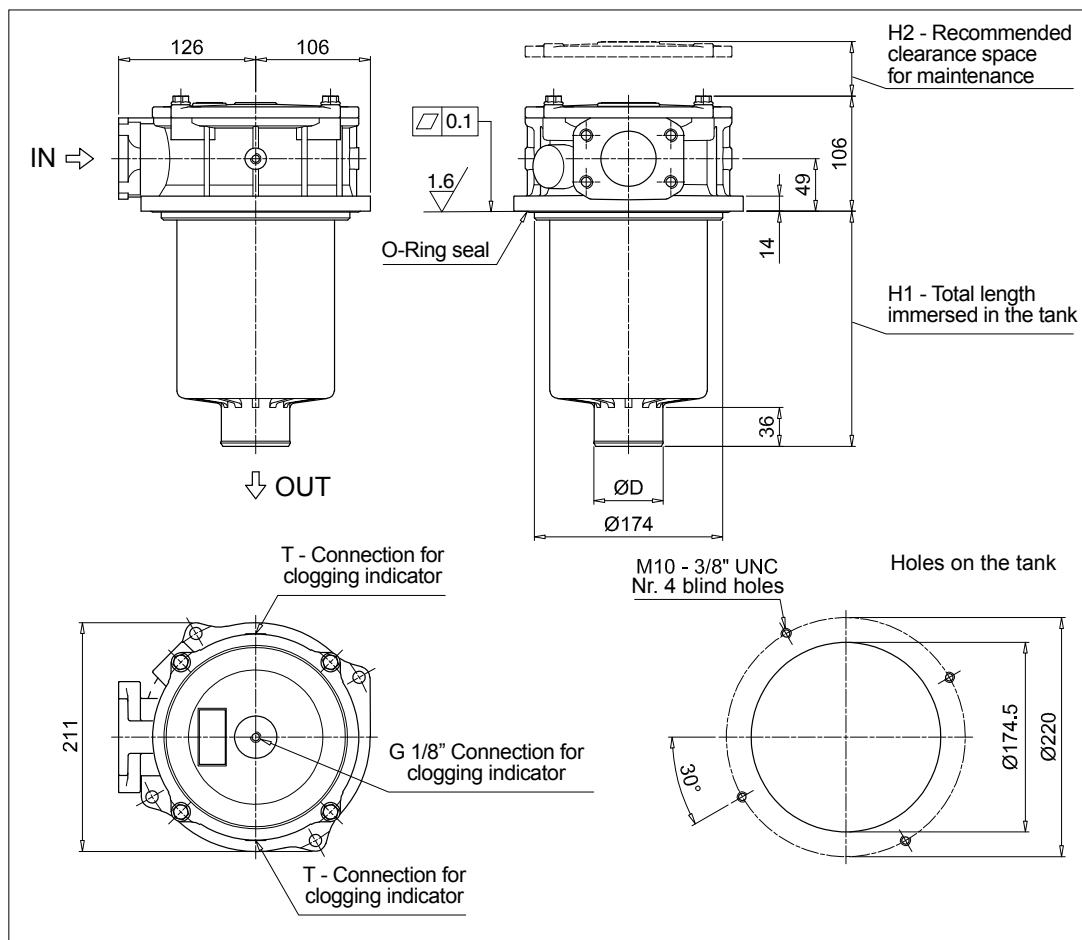
Series and size				Configuration example 1:							
MPF450 MPF451 MPF750				Configuration example 2:							
				MPF450	1	A	G1	A25	H	B	P01
Filter element with standard spigot				MPF750	1	V	F2	P10	N	E	P01
Length				MPF 450	MPF 451	MPF 750					
1				•	•	•					
2				•	•						
3				•	•						
Seals and treatments											
A	NBR			W	NBR			head anodized			
V	FPM			Z	FPM			head anodized			
Connections				Aux (only size 451)							
G1	G 2"			G 3/4"							
G4	2" NPT			3/4" NPT							
G7	SAE 32 - 2 1/2" - 12 UN			SAE 12 - 1 1/16" - 12 UN							
F1	2" SAE 3000 psi/M			G 3/4"							
F2	2" SAE 3000 psi/UN			3/4" NPT							
Filtration rating (filter media)											
A03	Inorganic microfiber 3 µm			M25	Wire mesh 25 µm						
A06	Inorganic microfiber 6 µm			M60	Wire mesh 60 µm						
A10	Inorganic microfiber 10 µm			M90	Wire mesh 90 µm						
A16	Inorganic microfiber 16 µm			P10	Resin impregnated paper 10 µm						
A25	Inorganic microfiber 25 µm			P25	Resin impregnated paper 25 µm						
				Filter media							
Element Δp				Axx	Mxx	Pxx					
N	10 bar				•	•					
H	10 bar										
W	10 bar, compatible with fluids HFA, HFB and HFC			•	•						
				Bypass valve				Execution			
				E	3 bar			P01	MP Filtri standard		
				B	1.75 bar			Pxx	Customized		

FILTER ELEMENT

Element series and size				Configuration example 1:									
MF400		MF750		Filter element with standard spigot			1	A25	H	B		P01	
Element length				MPF 450	MPF 451	MPF 750	Configuration example 2:						
1				•	•	•	MFX750	1	P10	N	V	E	P01
2				•	•								
3				•	•								
Filtration rating (filter media)													
A03		Inorganic microfiber		3 µm	M25		Wire mesh		25 µm				
A06		Inorganic microfiber		6 µm	M60		Wire mesh		60 µm				
A10		Inorganic microfiber		10 µm	M90		Wire mesh		90 µm				
A16		Inorganic microfiber		16 µm	P10		Resin impregnated paper		10 µm				
A25		Inorganic microfiber		25 µm	P25		Resin impregnated paper		25 µm				
Element Δp				Filter media									
N		10 bar		Axx	Mxx	Pxx							
H		10 bar			•	•							
W		10 bar, compatible with fluids HFA, HFB and HFC		•	•								
Seals				Bypass valve				Execution					
B NBR				E 3 bar				P01 MP Filtri standard					
V FPM				1.75 bar				Pxx Customized					

ACCESSORIES

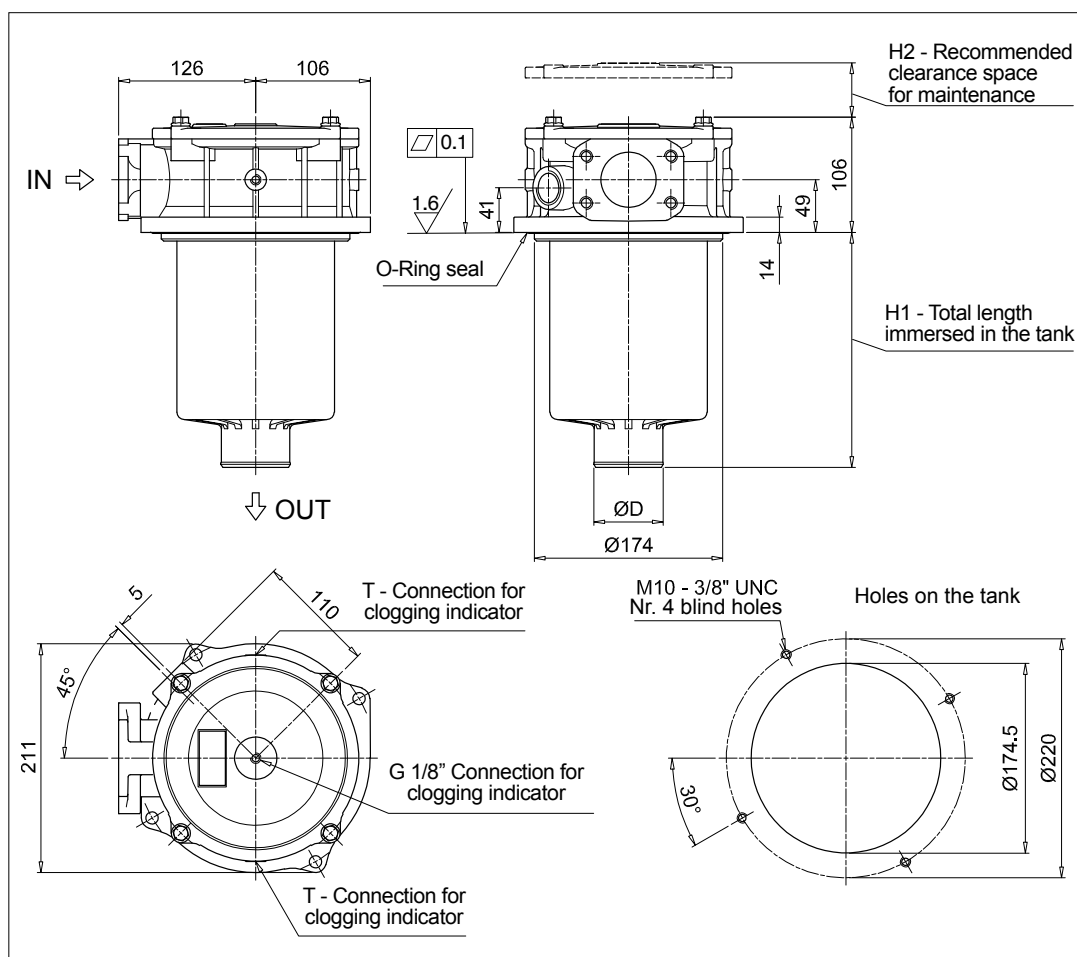
Indicators		page			page
BVA	Axial pressure gauge	240	BEA	Electrical pressure indicator	239
BVR	Radial pressure gauge	240	BEM	Electrical pressure indicator	239
BVP	Visual pressure indicator with automatic reset	241	BLA	Electrical / visual pressure indicator	239-240
BVQ	Visual pressure indicator with manual reset	241			
Additional features		page			
Sxx	Extension tube	248			
T5	Filler plug M30x1.5	249			



MPF450

Filter length	H1 [mm]	H2 [mm]	D [mm]
1	180	210	51
2	240	270	64
3	290	315	64

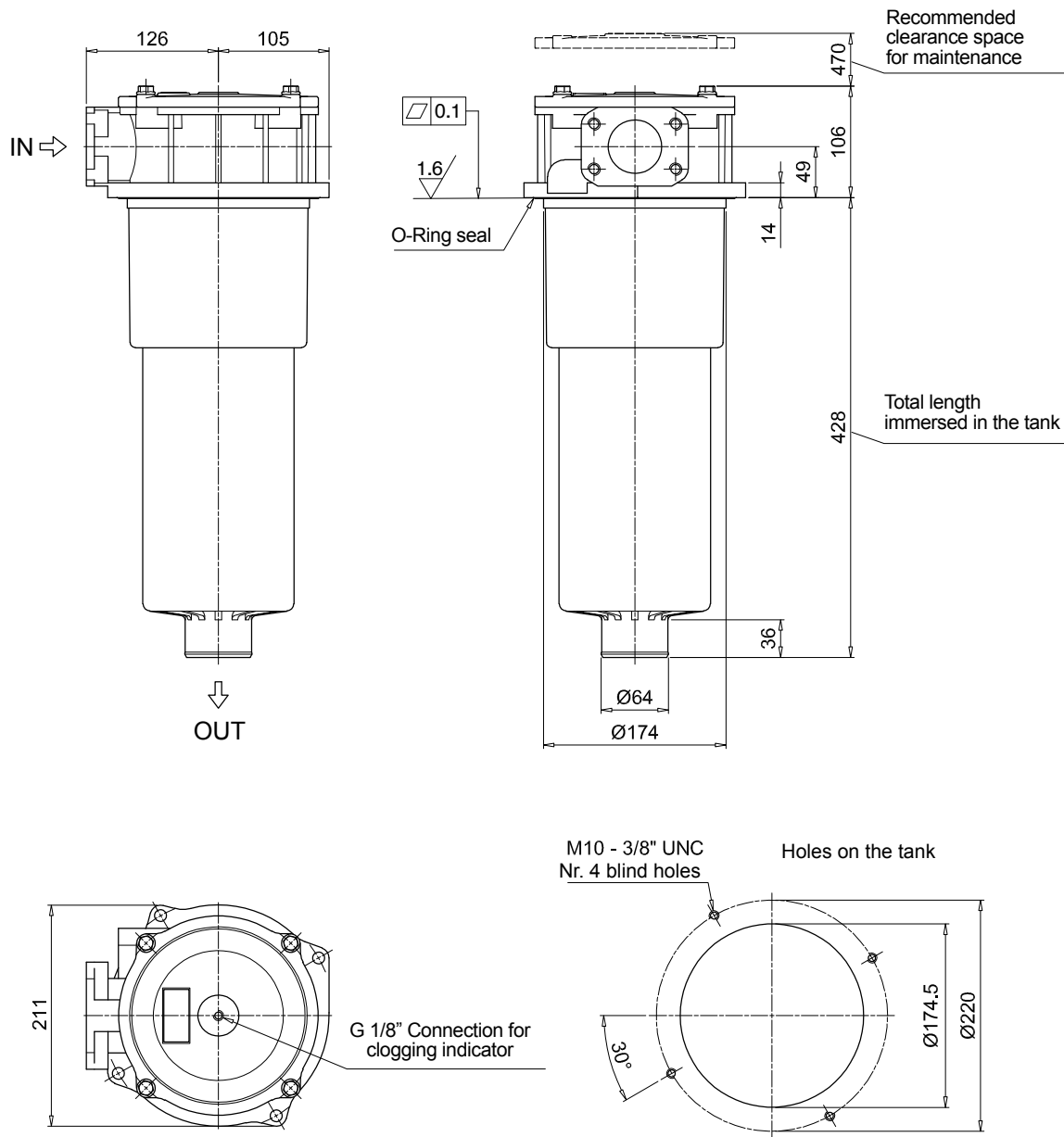
Connections	T
G1	G 1/8"
G4 - G7	1/8" NPT
F1	G 1/8"
F2	1/8" NPT



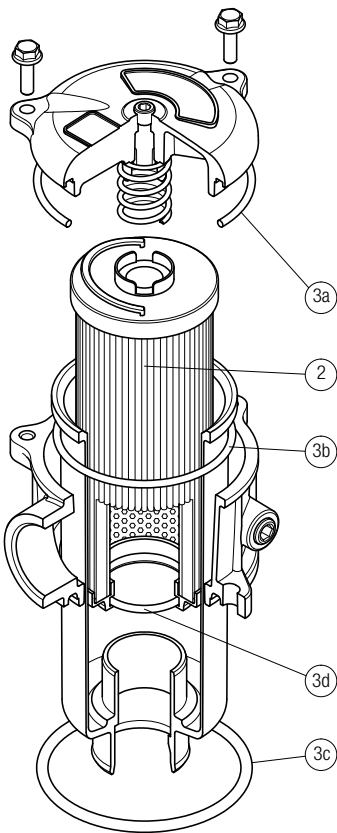
MPF451

Filter length	H1 [mm]	H2 [mm]	D [mm]
1	180	210	51
2	240	270	64
3	290	315	64

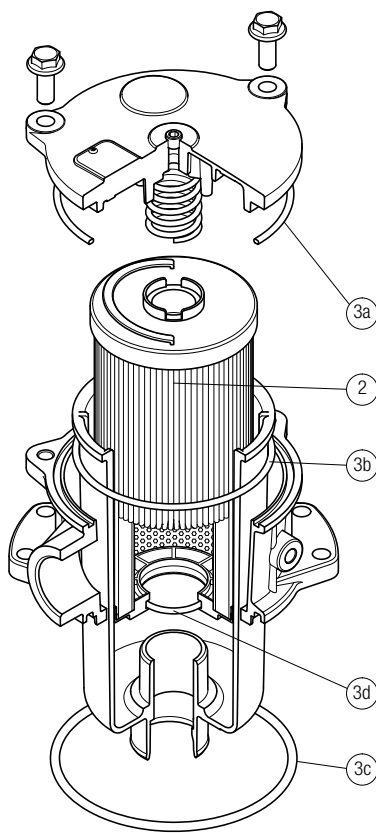
Connections	T
G1	G 1/8"
G4 - G7	1/8" NPT
F1	G 1/8"
F2	1/8" NPT



MPF 100



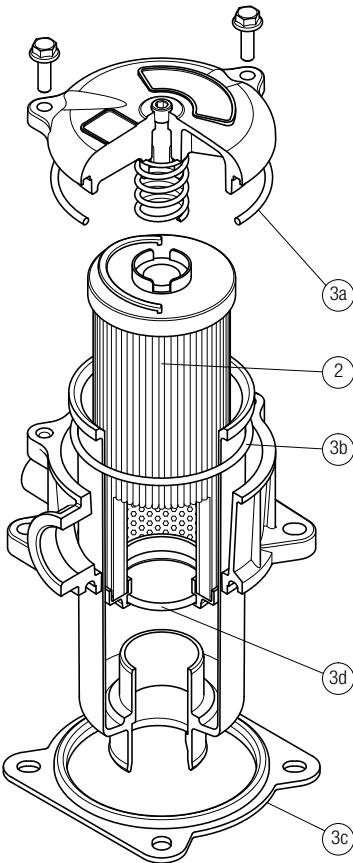
MPF 181



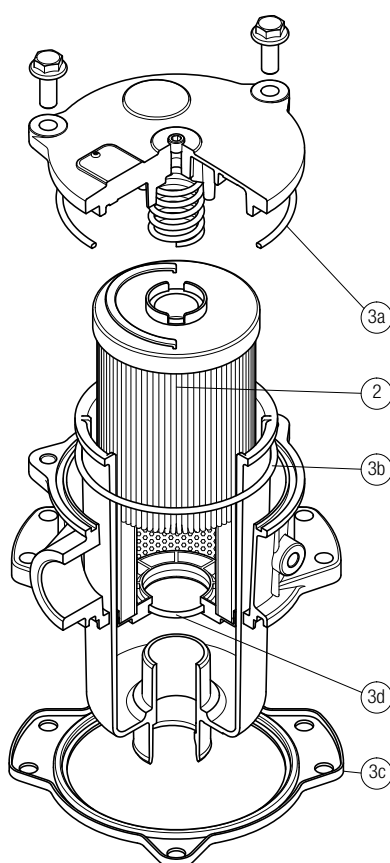
O-RING SEAL

Q.ty: 1 pc.		Q.ty: 1 pc.	
Item:	2	3 (3a ÷ 3d)	
Filter series	Filter element	Seal Kit code number	
		NBR	FPM
MPF 030	See order table	02050055	02050056
MPF 100-110		02050057	02050058
MPF 181-182		02050059	02050060
MPF 184		02050455	02050456
MPF 191-192		02050457	02050458
MPF 194		02050459	02050460
MPF 400-410		02050061	02050062
MPF 450-451		02050461	02050462
MPF 750		02050106	02050107

MPF 104



MPF 181



FLAT SEAL

Item:		Q.ty: 1 pc.		Q.ty: 1 pc.	
		2		3 (3a ÷ 3d)	
Filter series	Filter element	Seal Kit code number			
		NBR	FPM		
MPF 020	See order table	02050438	02050439		
MPF 104		02050350	02050408		
MPF 181-182		02050659	02050660		
MPF 191-192		02050661	02050662		