

Directional spool type, direct acting external pilot, external vent

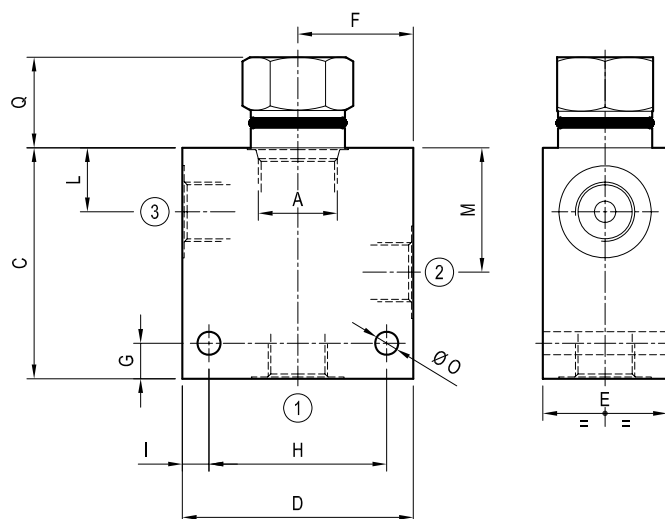
Common cavity

Cartridge style in manifold

VDSD-C

OU.07 - K - X - Y - Z - W

Dimensions



Technical data

Max flow:	up to 160 l/min	(43 gpm)
Max operating pressure for steel body:	350 bar	(5000 psi)
Max operating pressure for aluminium body:	210 bar	(3000 psi)

To order only manifold see data sheet RE 18325-85

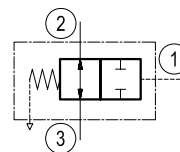
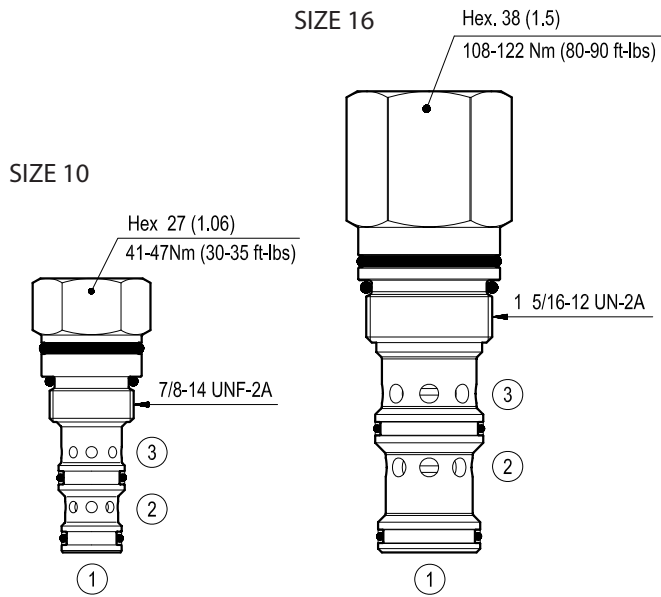


Table "Y"

[illegible]

Cartridge style



[mm (inches)]

Table "K"

					K		
CARTRIDGE CODE	04	77	22	X	85	Z	VDSD-10A
	04	77	22	X	27	Z	VDSD-16A

Table "X"

X	O-Ring on pilot piston	
00	No O-Ring	
10	With O-Ring	

CARTRIDGE TECHNICAL DATA

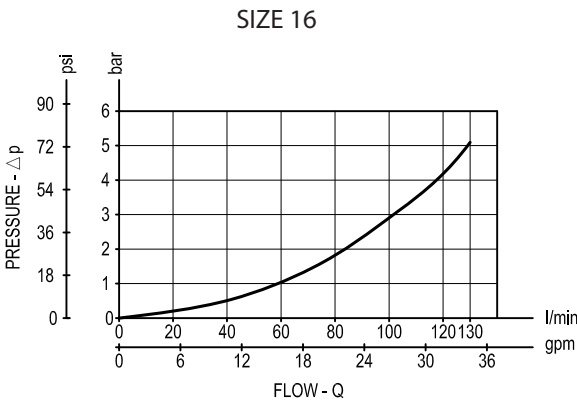
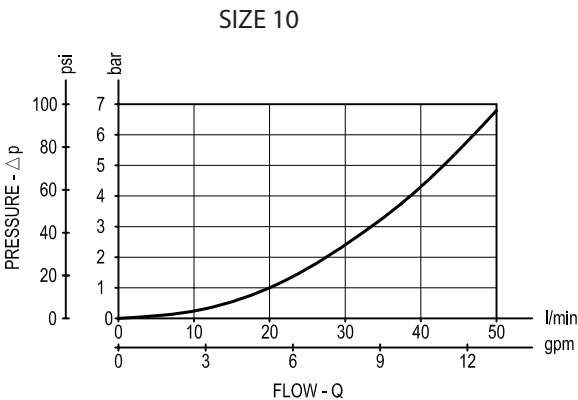
Common cavity: CA-10A-3N / CA-16A-3N

For other details see data sheet RE 18320-79 and RE 18320-80

Table "Z"

[illegible]

Performance graphs



Ordering code

OU.07	K	X	Y	Z	W
-------	---	---	---	---	---

Manifold with directional spool type, direct acting external pilot, external vent.

Cartridge style - Common cavity (see table K on page 2)

Cartridge style - O-Ring on pilot piston (see table X on page 2)

Manifold material

= 00 Aluminium manifold

= S0 Steel manifold

Settings - Springs (see table Z on page 2)

Manifold style - Dimensions and port sizes (see table Y on page 1)

Preferred types (readily available)

Type	Material number	Type	Material number
OU0727000505S0	R934003578		
OU0785000205S0	R934003339		

Further types available by request