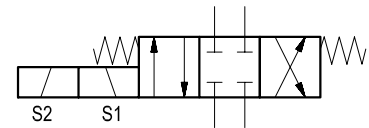
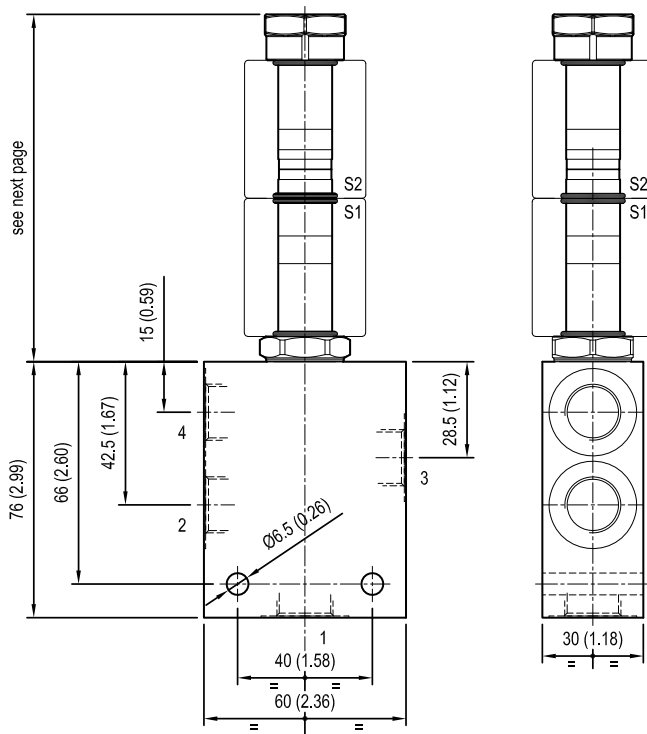


Solenoid operated valves 4-way 3-positions Common cavity size 08 Cartridge style in manifold

VED-CS-16-08A-43

RE 18331-59
Edition: 02.2019
OS.14 - K - 58 - X - Y - Z - W Replaces: 01.2018



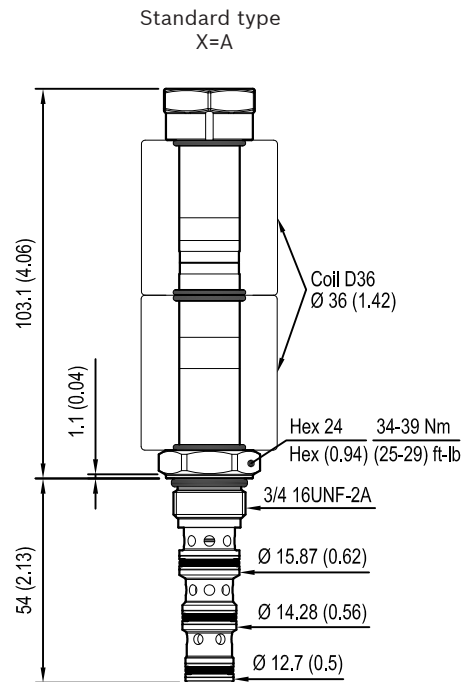
Cartridge schemes (K)

monodirectional type	bidirectional type
	31
	32

Technical data

Max. flow	15 l/min (4 gpm)
Max. operating pressure for steel body	280 bar (4060 psi)
Max operating pressure for aluminium body	210 bar (3000 psi)
Ambient temperature range	-30 to 90 °C (-22 to 194 °F)
Fluids: Mineral-based or synthetics with lubricating properties at viscosities of 20 to 380 mm ² /s (cSt)	
MTTFD	150 years see RE 18350-51
To order manifold only, see data sheet RE 18325-85	
Other technical data	See data sheet 18350-50

Solenoid operated valves, direct acting
spool type 4-way 3-position

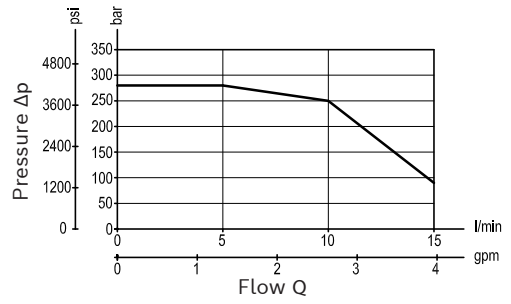
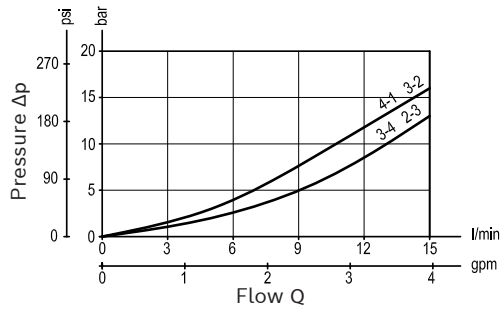
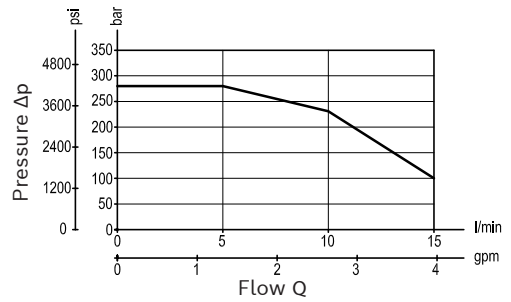
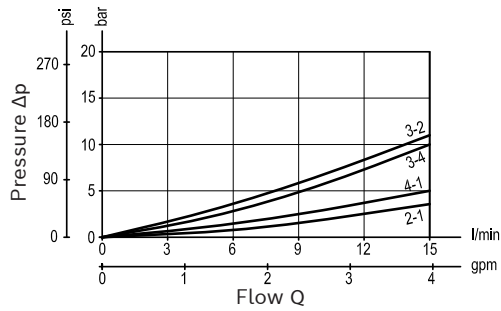


Cartridge technical data

General	
Installation orientation	Unrestricted
Ambient temperature range	-30 to 90 °C (-22 to 194 °F)
Hydraulic	
Max. operating pressure	up to 280 bar (4060 psi)
Flow range	up to 15 l/min (4 gpm)
Max. internal leakage at 230 bar	40 cm ³ /min. (2.4 cu.in/min.)
Fluid temperature range	-20 to 80 °C (-4 to 176 °F)
Fluids: Mineral-based or synthetics with lubricating properties at viscosities of 20 to 380 mm ² /s (cSt)	
Installation torque	34 - 39 Nm (25 - 29 ft-lbs)
Recommended degree of fluid contamination	Nominal value max. 10 µm (NAS 8) ISO 4406 19/17/14
MTTFD	150 years see RE 18350-51
Cavity	CA-08A-4N see data sheet 18325-70
Other technical data	See data sheet 18350-50

Electrical	
Type of voltage	DC voltage
Coil type	D36
Supply voltage	See data sheet 18325-90
Admitted voltage tolerance: -10%/+15% of nominal voltage at 60°C amb. T	
Power consumption	20 W
Type of protection	See data sheet 18325-90
Note: Coils must be ordered separately	

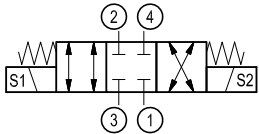
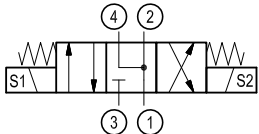
Characteristic curves

Version 31
Performance limits at 100% duty cycle at 90°C and 60°C amb. T.

Version 32
Performance limits at 100% duty cycle at 90°C and 60°C amb. T.


Minimum switching voltage for all versions and 100% ED	
Amb. T	Voltage required
60°C	-10% of V nominal
90°C	V nominal

Note: in case of need of performance limits at specific different working conditions, please consult factory.

Ordering code

OS.14	K	58	X	Y	Z	W										
<div>Solenoid operated valves 4-way 3-positions Common cavity size 08 Cartridge style in manifold</div> <div></div> <div></div>						<div>Manifold material</div> <table border="1"><tbody><tr><td>00</td><td>Aluminium</td></tr><tr><td>S0</td><td>Steel</td></tr></tbody></table> <div>Manifold port sizes</div> <table border="1"><tbody><tr><td>09</td><td>G 1/4</td></tr><tr><td>02</td><td>G 3/8</td></tr><tr><td>55</td><td>9/16-18 UNF</td></tr></tbody></table> <div>Cartridge seals and accessories options 0 = With buna seal V = With Viton seal</div> <div>Cartridge options A = Standard</div>	00	Aluminium	S0	Steel	09	G 1/4	02	G 3/8	55	9/16-18 UNF
00	Aluminium															
S0	Steel															
09	G 1/4															
02	G 3/8															
55	9/16-18 UNF															
Common cavity size 08																