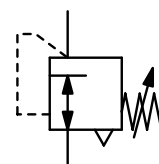


Description	Diaphragm pressure regulator for supply pressure up to 40 bar, of solid design, completely made of brass.
Media	compressed air, non-corrosive gases or liquids. Regulator R280-16 is not suitable for liquids.
Supply pressure	max. 40 bar, for liquids $\Delta p_{\max.} = 25$ bar
Adjustment	by handwheel for G $\frac{1}{4}$ and G $\frac{1}{2}$, with locknut by T-handle for G $\frac{3}{4}$ up to G1 $\frac{1}{2}$ by knob for G2 by hexagonal spindle for range 0.5...16/25 bar, up to size G $\frac{1}{2}$ 14 mm A/F, otherwise 19 mm A/F
Relieving function	relieving, optionally non-relieving
Gauge port	G $\frac{1}{4}$ on both sides of the body, one screw plug supplied
Mounting position	any
Temperature range	-10 °C to 90 °C / 14 °F to 194 °F
Material	Body: brass, aluminium die-cast at G2 regulator Elastomer: NBR/Buna-N Inner valve: brass



G $\frac{1}{4}$ up to G2, P $_1$: max. 40 bar
0.2...3/35 bar

Dimensions			Pressure adjustment	K _v -value	Flow-rate	Connection thread	Pressure range	Order number
A	B	C	mit	(m ³ /h)	m ³ /h*1	G	bar	
mm	mm	mm			l/min*1			



Brass pressure regulator

supply pressure max. 40 bar, for compressed air relieving, without pressure gauge

R280

45	104	23	handwheel	0.3	26	430	G $\frac{1}{4}$	0.2... 3 0.2... 6 0.5... 10 0.5... 16 0.5... 25	R280-02A R280-02B R280-02C R280-02D R280-02E
72	145	30	handwheel	0.8	75	1250	G $\frac{1}{2}$	0.2... 3 0.2... 6 0.5... 10 0.5... 16 0.5... 25	R280-04A R280-04B R280-04C R280-04D R280-04E
			hexagonal spindle						
95	216	41	T-handle	4.8	450	7500	G $\frac{3}{4}$ *2	0.2... 3 0.2... 6 0.5... 10 0.5... 16 0.5... 25	R280-06A R280-06B R280-06C R280-06D R280-06E
			hexagonal spindle						
95	216	41	T-handle	5.0	468	7800	G1	0.2... 3 0.2... 6 0.5... 10 0.5... 16 0.5... 25	R280-08A R280-08B R280-08C R280-08D R280-08E
			hexagonal spindle						
128	240	50	T-handle	7.1	660	11000	G1 $\frac{1}{4}$ *2	0.2... 3 0.2... 6 0.5... 10 0.5... 16 0.5... 25	R280-10A R280-10B R280-10C R280-10D R280-10E
			hexagonal spindle						



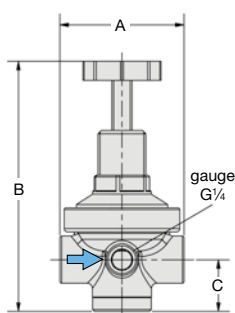
R280-02



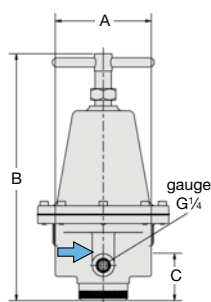
R280-04A / B / C



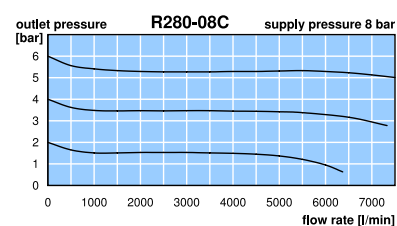
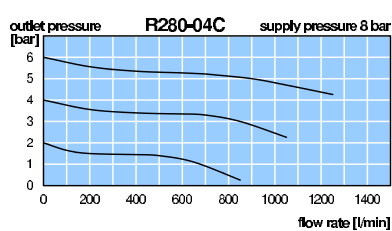
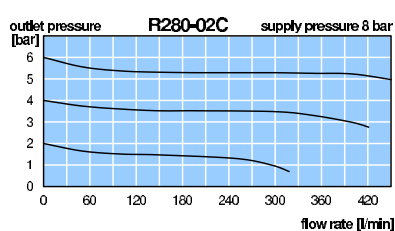
R280-10D / E



R280-02/-04



R280-06/-08/-10/-12



*1 at 8 bar supply pressure, 6 bar outlet pressure and 1 bar pressure drop

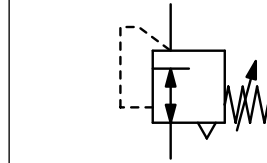
*2 reduced from next bigger thread

* Product group



Order example:
R280-02A

Description	Diaphragm pressure regulator for supply pressure up to 40 bar, of solid design, completely made of brass.
Media	compressed air, non-corrosive gases or liquids. Regulator R280-16 is not suitable for liquids.
Supply pressure	max. 40 bar, for liquids $\Delta p_{\max} = 25$ bar
Adjustment	by handwheel for G $\frac{1}{4}$ and G $\frac{1}{2}$, with locknut by T-handle for G $\frac{3}{4}$ up to G1 $\frac{1}{2}$ by knob for G2 by hexagonal spindle for range 0.5...16/25 bar, up to size G $\frac{1}{2}$ 14 mm A/F, otherwise 19 mm A/F
Relieving function	relieving, optionally non-relieving
Gauge port	G $\frac{1}{4}$ on both sides of the body, one screw plug supplied
Mounting position	any
Temperature range	-10 °C to 90 °C / 14 °F to 194 °F
Material	Body: brass, aluminium die-cast at G2 regulator Elastomer: NBR/Buna-N Inner valve: brass



G $\frac{1}{4}$ up to G2, P $_1$: max. 40 bar
0.2...3/35 bar

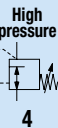
Dimensions			Pressure adjustment	K _v -value	Flow-rate	Connection thread	Pressure range	Order number
A	B	C	mit	(m ³ /h)	m ³ /h*1	G	bar	
mm	mm	mm			l/min*1			



Brass pressure regulator									supply pressure max. 40 bar, for compressed air relieving, without pressure gauge	R280
114	240	50	T-handle	7.7	720	12 000	G1 $\frac{1}{2}$	0.2... 3		R280-12A
								0.2... 6		R280-12B
								0.5... 10		R280-12C
			hexagonal spindle					0.5... 16		R280-12D
								0.5... 25		R280-12E
160	248	78	knob	25.6	2 400	40 000	G2	0.5... 6		R280-16B
								0.5... 10		R280-16C
								0.5... 16		R280-16D
								0.5... 25		R280-16E
								0.5... 35		R280-16F



R280-12A/B/C



Special options, add the appropriate letter

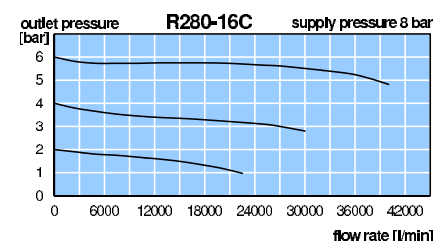
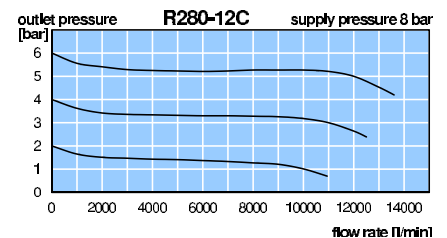
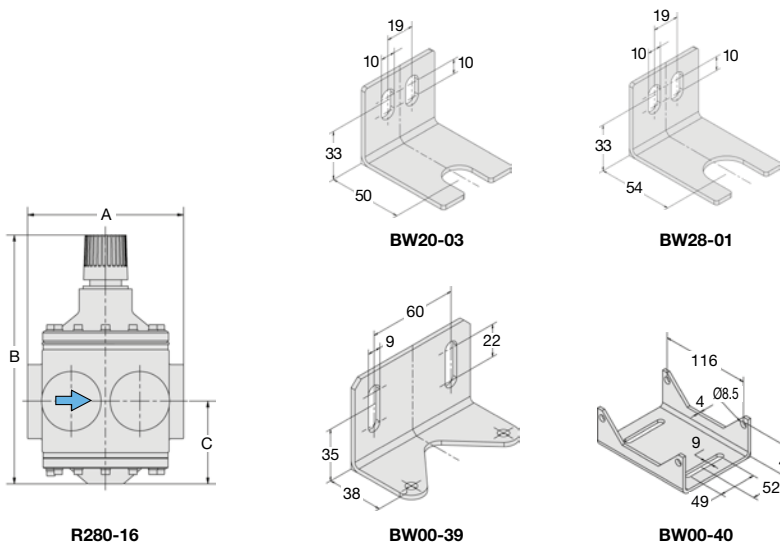
non-relieving	without relieving function	not for G2	R280-... K
for oxygen	specially cleaned, with oxygen grease, max. 60 °C/140 °F up to G1 $\frac{1}{2}$		R280-... K15

Accessories, enclosed

pressure gauge	Ø 50 mm, 0... ^{*2} bar, G $\frac{1}{4}$	for G $\frac{1}{4}$ and G $\frac{1}{2}$	MA5002-... ^{*2}
	Ø 50 mm, 0...25 bar, G $\frac{1}{4}$	for G $\frac{1}{4}$ and G $\frac{1}{2}$	MA5002- 25
	Ø 63 mm, 0... ^{*2} bar, G $\frac{1}{4}$	from G $\frac{3}{4}$	MA6302-... ^{*2}
	Ø 63 mm, 0...25 bar, G $\frac{1}{4}$	from G $\frac{3}{4}$	MA6302- 25
mounting bracket	made of steel	for G $\frac{1}{4}$	BW20-03
mounting nut	made of brass	for G $\frac{1}{4}$	M20x1,5M
mounting bracket	made of steel	for G $\frac{1}{2}$	BW28-01
mounting nut	made of brass	for G $\frac{1}{2}$	M28x1,5M
mounting bracket	made of steel	for G $\frac{3}{4}$ to G1 $\frac{1}{2}$	BW00-39
mounting bracket	made of steel	for G2	BW00-40



R280-16
accessory: gauge



*1 at 8 bar supply pressure, 6 bar outlet pressure and 1 bar pressure drop
*2 04 = 0...4 bar, 06 = 0...6 bar, 10 = 0...10 bar, 16 = 0...16 bar

Gauges: see chapter for measuring devices

* Product group



Order example:
R280-12A