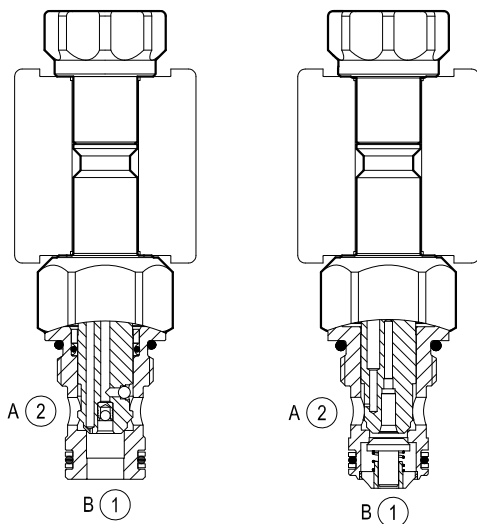
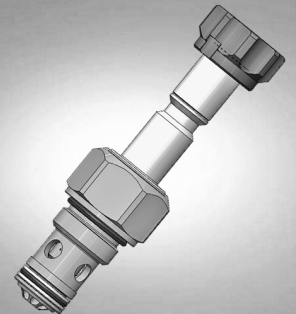


# Solenoid operated valves pilot operated poppet type 2-way normally closed

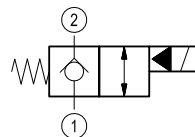
Special cavity, 019-E

VEI-8A-06-NC

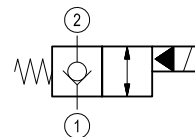
OD.15 - X - 19 - Z



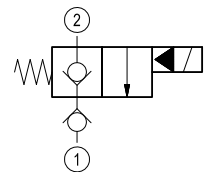
version 03



version 05



version 11



## General

Weight	kg (lbs)	0.13 (0.29)
Installation orientation		Optional
Ambient temperature range	°C (°F)	-30 to 60 (-22 to 140)

## Hydraulic

Max. operating pressure	bar (psi)	350 (5000)
Max. proof pressure	bar (psi)	420 (6000)
Flow range	l/min. (gpm)	0.5-40 (0.1-11)
Fatigue cycle life	cycles	1 million cycles at 350 bar
Max. internal leakage	drops/min.	20
Fluid temperature range	°C (°F)	-20 to 80 (-4 to 176)
Fluids		Mineral-based or synthetics with lubricating properties at viscosities of 20 to 380 mm <sup>2</sup> /s (cSt)
Installation torque	Nm (ft-lbs)	39-51 (29-38)
Filtration		Nominal value max. 10µm (NAS 8) ISO 4406 19/17/14
Special cavity		019-E see RE 18325-75
Seal kit version 03-11	code material no.	RG19E201053010 R934003561
Seal kit version 05	code material no.	RG19E201052010 R934003560
Seal kit coil	code material no.	RG12A1PNBR7010 R934003958
Other technical data		See data sheet RE 18350-50

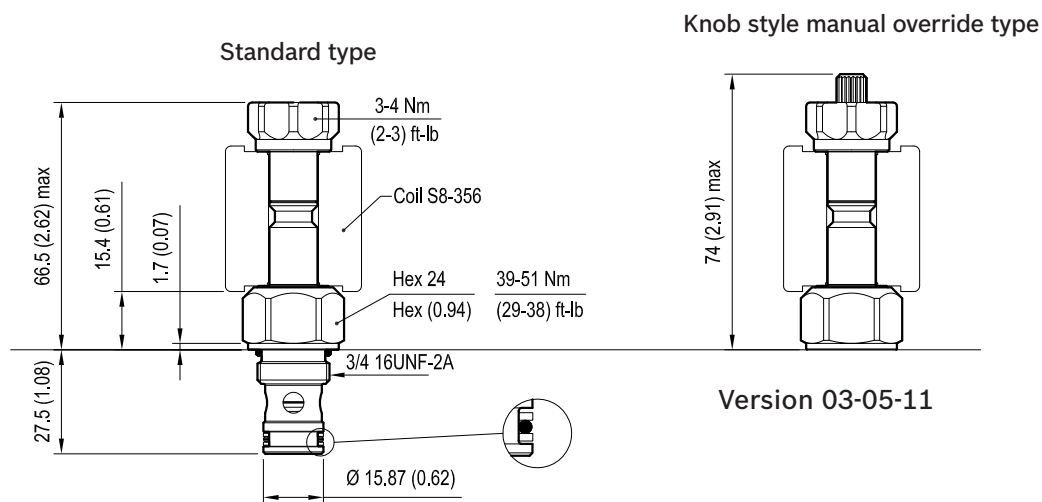
## Electrical

Type of voltage	DC voltage
Coil type	S8-356 see RE 18325-90
Supply voltage	See data sheet RE 18325-90
Nominal voltage	± 10%
Power consumption	W 20
Duty cycle coil	% See performance graphs
Type of protection	See data sheet RE 18325-90

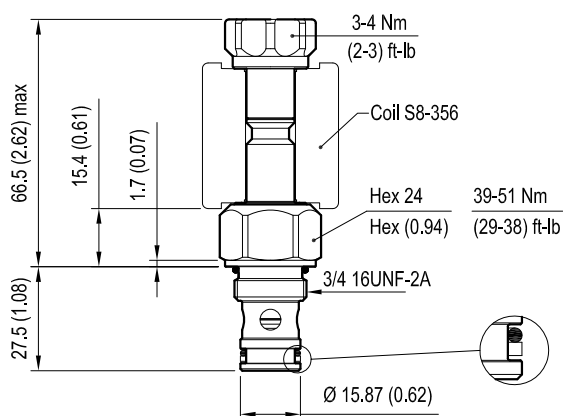
Note: Coils must be ordered separately.

## Dimensions

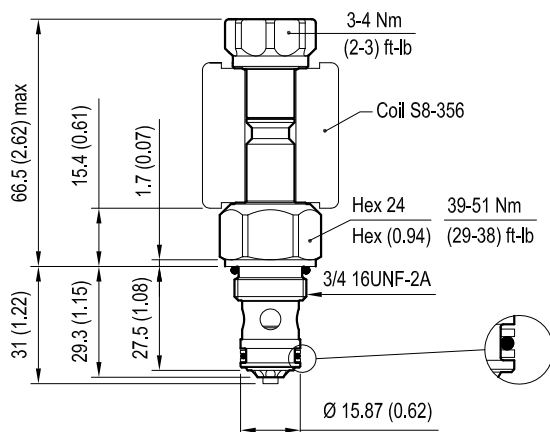
### Version 03: Solenoid operated valve, poppet 2-way normally closed



### Version 05: Solenoid operated valve, poppet 2-way normally closed



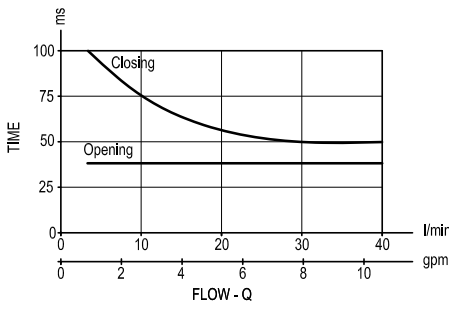
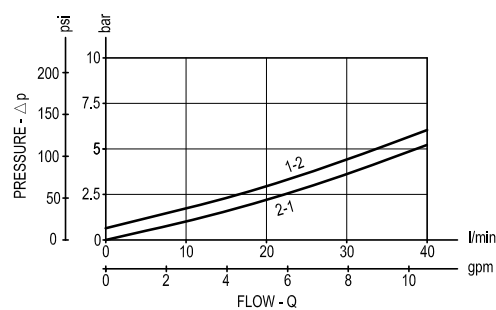
### Version 11: Solenoid operated valve, poppet 2-way normally closed



mm (Inches)

Performance graphs

Version 03-05



Version 11

