

Damper actuator for operating air control dampers in ventilation and air-conditioning systems for building services installations

- For air dampers up to approx. 0.4 m²
- Torque 2 Nm
- Nominal voltage AC/DC 24 V
- Control: Open-close or 3-point V
- Connecting terminals



Type overview

Type	Direction of rotation
CM24-T-L	counter-clockwise (ccw)
CM24-T-R	clockwise (cw)

Technical data

Electrical data	Nominal voltage	AC 24 V, 50/60 Hz / DC 24 V
	Nominal voltage range	AC/DC 19.2 ... 28.8 V
	Power consumption	In operation 0.5 W @ nominal torque At rest 0.2 W For wire sizing 1 VA
	Connection	Terminals for 3 x 1.5 mm ² CU wire or 3 x 1.0 mm ² CU litz wires
Functional data	Torque (nominal torque)	Min. 2 Nm @ nominal voltage
	Direction of rotation	See «Type overview»
	Manual override	Gear disengagement with magnet
	Angle of rotation	Without limit Endless With limit Fixed 315°↯ or 0 ... 287.5°↯ with mechanical end stops, can be adjusted in 2.5°↯ increments
	Running time	75 s / 90°↯
	Sound power level	Max. 35 dB (A)
	Position indicator	Mechanical, pluggable (with integrated magnet for gear disengagement)
Safety	Protection class	III Safety extra-low voltage / UL Class 2 Supply
	Degree of protection	IP20 in any mounting position NEMA1, UL Enclosure Type 1
	EMC	CE according to 2004/108/EC
	Certification	cULus according to UL 60730-1A and UL 60730-2-14 and CAN/CSA E60730-1:02 Certified to IEC/EN 60730-1 and IEC/EN 60730-2-14
	Mode of operation	Type 1 (EN 60730-1)
	Rated impulse voltage	0.8 kV (EN 60730-1)
	Control pollution degree	2 (EN 60730-1)
	Ambient temperature	–30 ... +50 °C
	Non-operating temperature	–40 ... +80 °C
	Ambient humidity	95% r.H., non-condensating (EN 60730-1)
Dimensions / Weight	Maintenance	Maintenance-free
	Dimensions	See «Dimensions» on page 2
	Weight	Approx. 160 g

Safety notes




- The actuator is not allowed to be used outside the specified field of application, especially in aircraft or any other form of air transport.
- Assembly must be carried out by trained personnel. Any legal regulations or regulations issued by authorities must be observed during assembly.
- The device may only be opened at the manufacturer's site. It does not contain any parts that can be replaced or repaired by the user.
- When calculating the required torque, the specifications supplied by the damper manufacturers (cross section, design, installation site), and the air flow conditions must be observed.

Safety notes

(Continue)

- The device contains electrical and electronic components and is not allowed to be disposed of as household refuse. All locally valid regulations and requirements must be observed.

Product features

- Simple direct mounting** Simple direct mounting on the damper spindle with a universal spindle clamp (\varnothing 6 ... 12.7 mm). The actuator is then secured with the anti-rotation strap supplied, to prevent it from rotating.
- Manual override** Manual override with magnet possible (the gear is disengaged as long as the magnet adheres to the symbol ). The magnet for gear disengagement is integrated in the position indicator.
- Adjustable angle of rotation** Adjustable angle of rotation with mechanical end stops.
- High functional reliability** The actuator is overload-proof, requires no limit switches and automatically stops when the end stop is reached.

Electrical installation

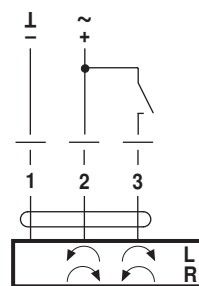
Wiring diagrams

Note

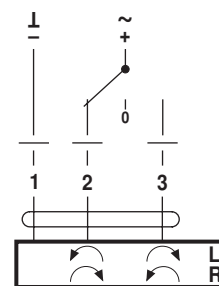
- Connect via safety isolation transformer.
- Other actuators can be connected in parallel. Please note the performance data.



Open-close control

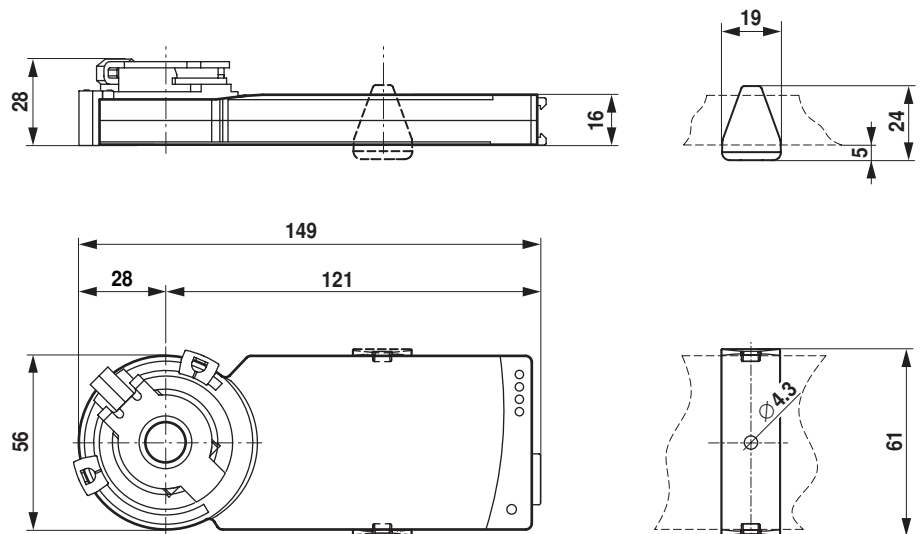



3-point control

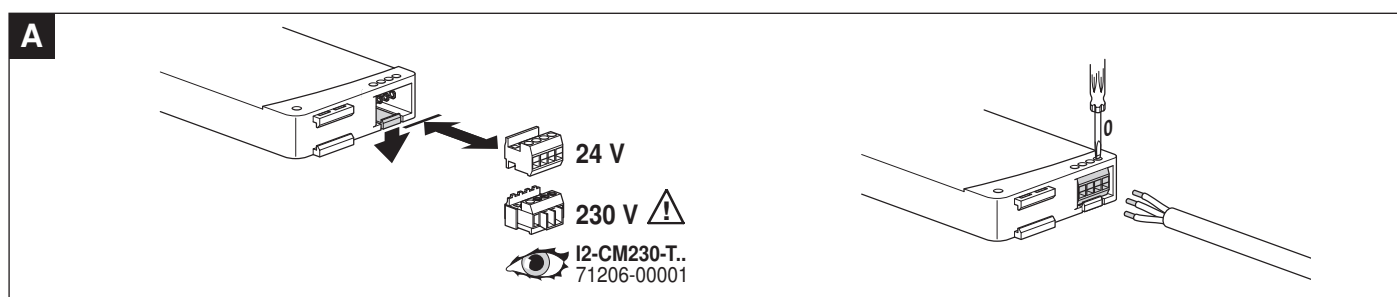
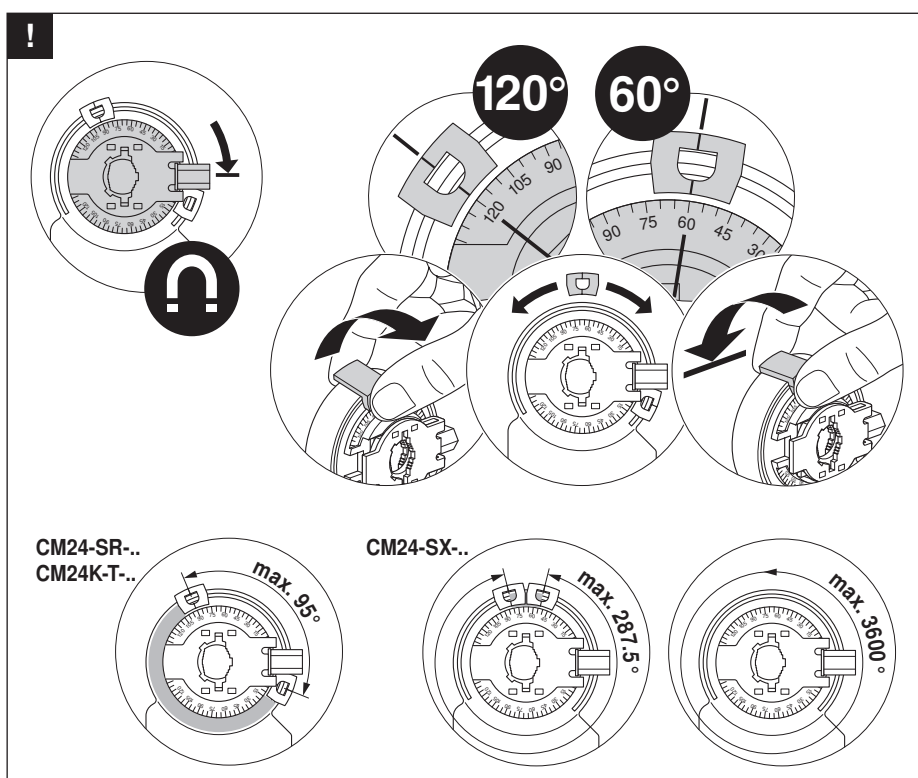
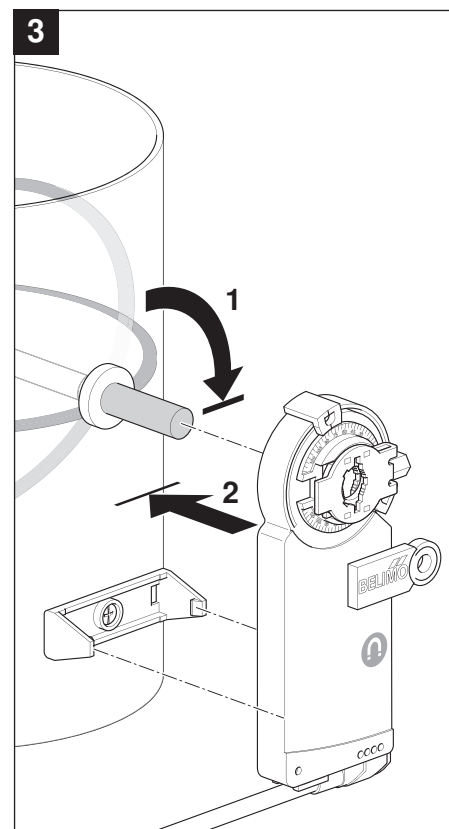
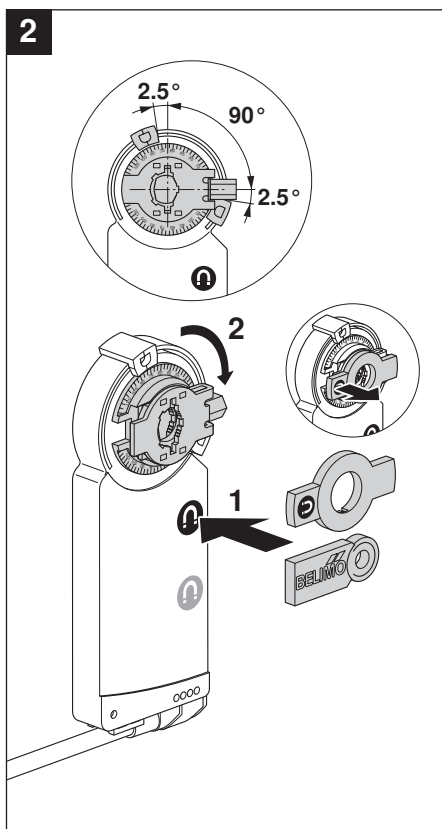
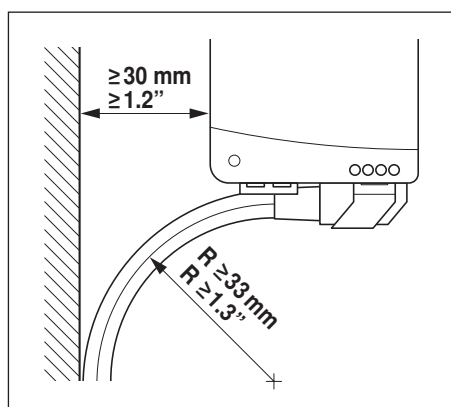
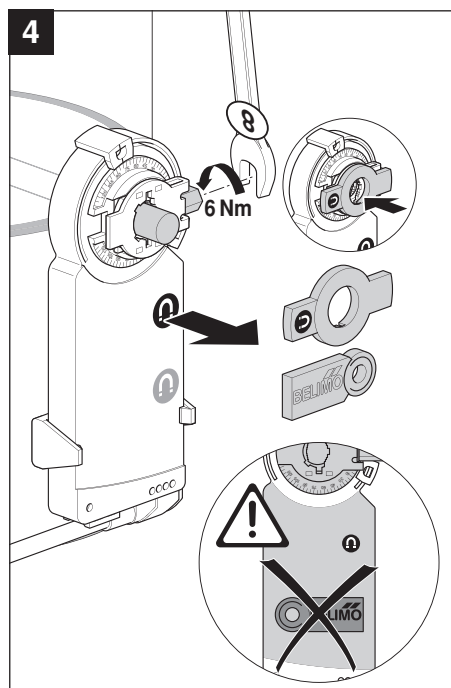
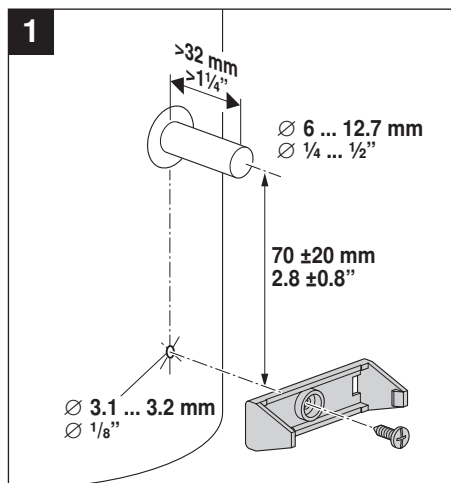


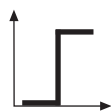
Dimensions [mm]

Dimensional drawings

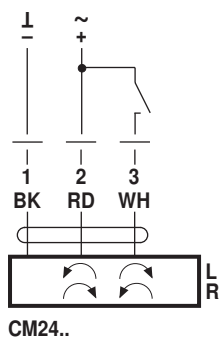


Damper spindle	Length	
	≥32	6 ... 12.7

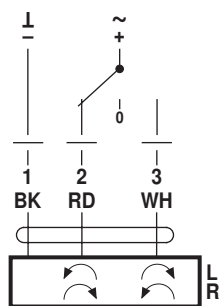




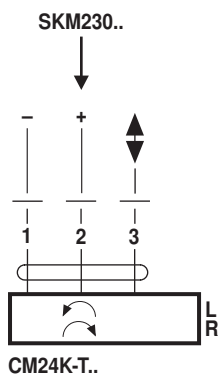
AC 24 V / DC 24 V



CM24..

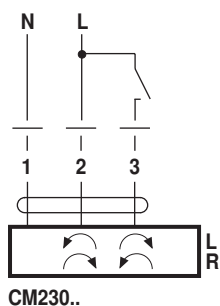


CM24..

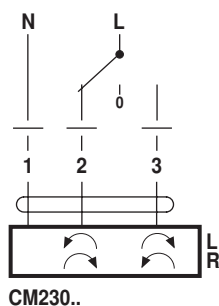
DC 24 V
(SKM230..)

CM24K-T..

AC 100 ... 240 V ⚠



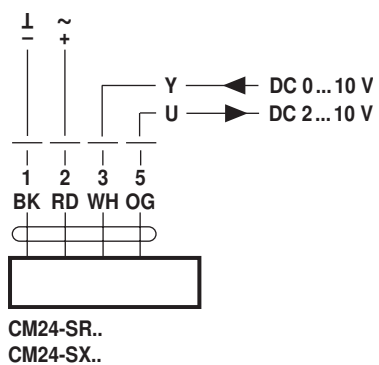
CM230..



CM230..



AC 24 V / DC 24 V



CM24-SR..

CM24-SX..