

Sequence, pilot operated spool type, compensated

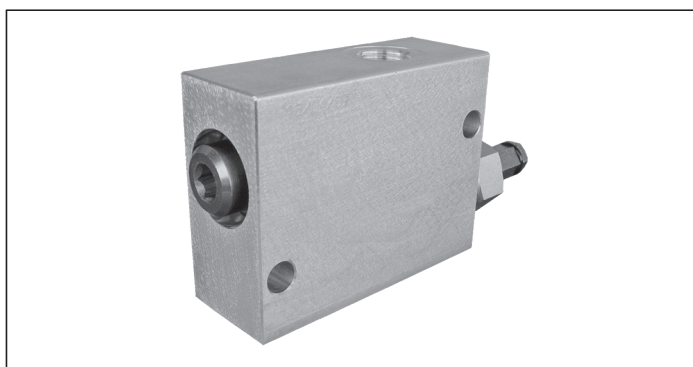
VSQP-CC-150

05.24.06 - X - Y - Z

RE 18309-88

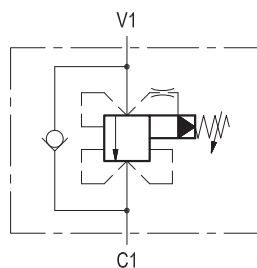
Edition: 03.2016

Replaces: 04.2010



Description

Initially, the flow goes to a side line connected to V1, not shown here, and energizes a first actuator until pressure increases to meet the selected valve setting; then flow opens the relief cartridge and passes from V1 to C1 energizing the second actuator connected to C1. The valve applies a balanced relief piston allowing relief operation at the valve setting independent of back-pressure at C1. With line pressure equal or higher than setting, after valve opening, the full pressure is transferred from V1 to C1 and to the second actuator. The check valve allows reverse flow, from C1 to V1.

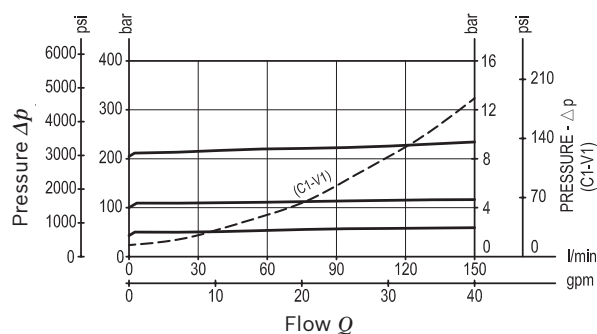


Technical data

Operating pressure	up to 210 bar (3000 psi)
Max. flow	150 l/min. (40 gpm)
Leakage: 100 cc/min. (6 in ³ /min.) at max. relief setting	
For a good performance, the pressure in the secondary circuit should not drop below 20 bar (290 psi).	
Weight	1.1 kg (2.4 lbs)
Manifold material	Aluminium
Note: aluminium bodies are often strong enough for operating pressures exceeding 210 bar (3000 psi), depending from the fatigue life expected in the specific application. If in doubt, consult our Service Network.	
Fluid	Mineral oil (HL, HLP) according DIN 51524
Fluid temperature range	-30 °C to 100 (-22 to 212 °F)
Viscosity range	10 to 500 mm ² /s (cSt)
Recommended degree of fluid contamination	Class 19/17/14 according to ISO 4406
Other technical data	see data sheet 18350-50

Note: for applications outside these parameters, please consult us.

Characteristic curve



Ordering code

05.24.06	X	Y	Z
----------	---	---	---

Sequence
pilot operated spool type, compensated

Adjustments

03 Leakproof hex. socket screw



20	SPRINGS		
	Adj. pressure range bar (psi)	Pres. increase bar/turn (psi/turn)	Std. setting Q=5 (l/min) bar (psi)
	10-210 (145-3000)	35 (508)	200 (2900)

Tamper resistant cap
ordering code 03.05.01.004
Mat. no. R930023246



Port sizes	V1	C1	
03	G 1/2	G 1/2	
04	G 3/4	G 3/4	

Preferred types

Type	Material number
052406030320000	R930001501
052406030420000	R930001503

Type	Material number

Dimensions

