

# Solenoid operated valves direct acting poppet type

## 2-way double lock

### Common cavity, Size 08

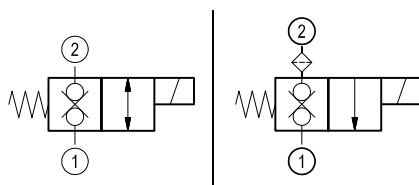
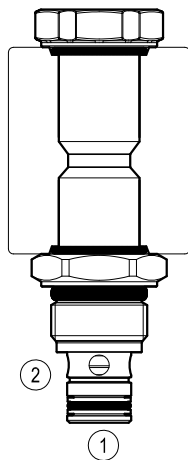
VEDT-16-08A-NC

OD.11 - X - 18 - Y - Z

**RE 18324-02**

Edition: 03.2020

Replaces: 01.2020



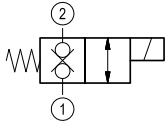
#### Technical data

General		
Weight		0.12 kg (0.26 lbs)
Installation orientation		Unrestricted
Storage ambient temperature range		-40 to 100 °C (-40 to 212 °F)
Operating ambient temperature range		-30 to 90 °C (-22 to 194 °F)
Salt spray test to DIN EN ISO 9227:2017-07		500h
Hydraulic		
Max. operating pressure		up to 250 bar (3625 psi)
Max. flow		up to 15 l/min. (4 gpm)
Max. internal leakage		5 drops/min
Fatigue cycle life		1 million cycles at 250 bar
Fluid temperature range		-20 to 80 °C (-4 to 176 °F)
Fluids: Mineral-based or synthetics with lubricating properties at viscosities of 20 to 380 mm <sup>2</sup> /s (cSt)		
Installation torque		34 - 39 Nm (25 - 29 ft-lbs)
Recommended degree of fluid contamination		Nominal value max. 10 µm (NAS 8) ISO 4406 19/17/14
MTTFd		150 years see RE 18350-51
Cavity		CA-08A-2N see 18325-70
Seal kit	code	RG08A2010530100
	material no.	R901101544
Seal kit coil and standard cap	code	RG02Z0010000100
	material no.	R930067869
Seal kit coil and protective cap only for Y=B,C	code	RG03Z0010000100
	material no.	R930067870
Lines bodies and standard assemblies		Please refer to section “Hydraulic integrated circuit” or consult factory
Other technical data		See data sheet 18350-50
Electrical		
Type of voltage		DC voltage
Coil type		D36
Supply voltage		See data sheet 18325-90
Admitted voltage tolerance: see characteristic curves and table		
Power consumption		20 W
Type of protection		See data sheet 18325-90
Note: Coils must be ordered separately		

Ordering code

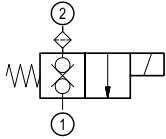
<b>OD.11</b>	<b>X</b>	<b>18</b>	<b>Y</b>	<b>Z</b>	<b>0000</b>	<b>*</b>
--------------	----------	-----------	----------	----------	-------------	----------

Solenoid operated valves  
direct acting poppet type  
2-way double lock



**31**

(mesh= 300 µm)



**33**

Series O/A to L  
unchanged performances and dimensions

0 = With Buna seal  
V = With Viton seal  
P = With buna seal and protective cap for override version B and C

A = Standard  
B = Push style manual override  
C = Push and twist style manual override

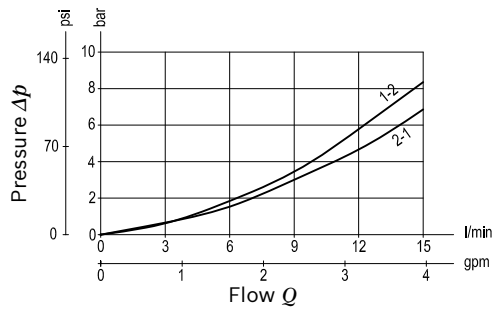
Common cavity: CA-08A-2N

Type	Material number
OD113118A000000	R930058329
OD113118B000000	R930058330
OD113318A000000	R930060586
OD113318B000000	R930058328
OD113118BP00000	R930061372

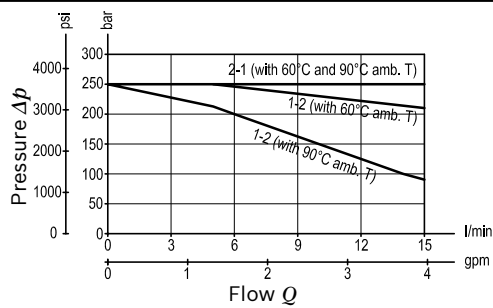
Type	Material number
OD113118C000000	R930065584

Characteristic curves

Version 31

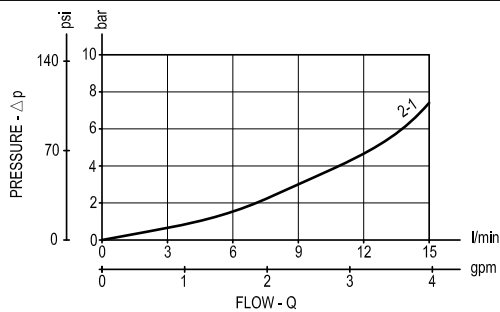


Performance limits at 100% duty cycle



Minimum switching voltage		
Flow direction	Amb. T	Voltage required
2-1	60°C	-20% of V nominal
2-1	90°C	V nominal
1-2	60°C	-10% of V nominal
1-2	90°C	V nominal

Version 33



Dimensions  
Solenoid operated valves direct acting poppet type  
2-way double lock

