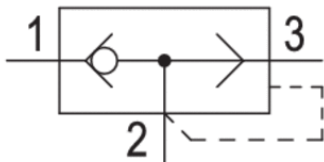


Quick exhaust valve, Series 573

- Qn 1►2 = 220-7200 l/min
- Qn 2►3 = 300-12000 l/min
- Internal thread / Internal thread



Version	Poppet valve
Working pressure min./max.	0,8 ... 10 bar
Ambient temperature min./max.	-18 ... 70 °C
Medium temperature min./max.	-18 ... 70 °C
Medium	Compressed air
Weight	See table below



Technical data

Part No.	Port 1	Type	Port 2	Type	Port 3 (Exhaust)	Type
		Port 1		Port 2		Port 3 (Exhaust)
5735040900	M5	Internal thread	M5	Internal thread	M5	Internal thread
5735040000	G 1/8	Internal thread	G 1/8	Internal thread	G 1/8	Internal thread
5735040100	G 1/4	Internal thread	G 1/4	Internal thread	G 1/4	Internal thread
R412010750	G 3/8	Internal thread	G 3/8	Internal thread	G 3/8	Internal thread
5735040300	G 1/2	Internal thread	G 1/2	Internal thread	G 1/2	Internal thread
R412010751	G 3/4	Internal thread	G 3/4	Internal thread	G 3/4	Internal thread
R412010752	G 1	Internal thread	G 1	Internal thread	G 1	Internal thread

Part No.	Flow rate value	Flow rate value	Sealing material	Weight
	Qn 1►2	Qn 2►3		
5735040900	220 l/min	300 l/min	Acrylonitrile butadiene rubber	0,03 kg
5735040000	680 l/min	1100 l/min	Polyurethane	0,08 kg
5735040100	1200 l/min	2100 l/min	Polyurethane	0,15 kg
R412010750	1800 l/min	3450 l/min	Polyurethane	0,153 kg
5735040300	3400 l/min	6100 l/min	Polyurethane	0,32 kg
R412010751	2500 l/min	9800 l/min	Polyurethane	0,45 kg
R412010752	7200 l/min	12000 l/min	Polyurethane	1,65 kg

Part No.	Fig.
5735040900	Fig. 2
5735040000	Fig. 1

Part No.	Fig.
5735040100	Fig. 1
R412010750	Fig. 1
5735040300	Fig. 1
R412010751	Fig. 1
R412010752	Fig. 1

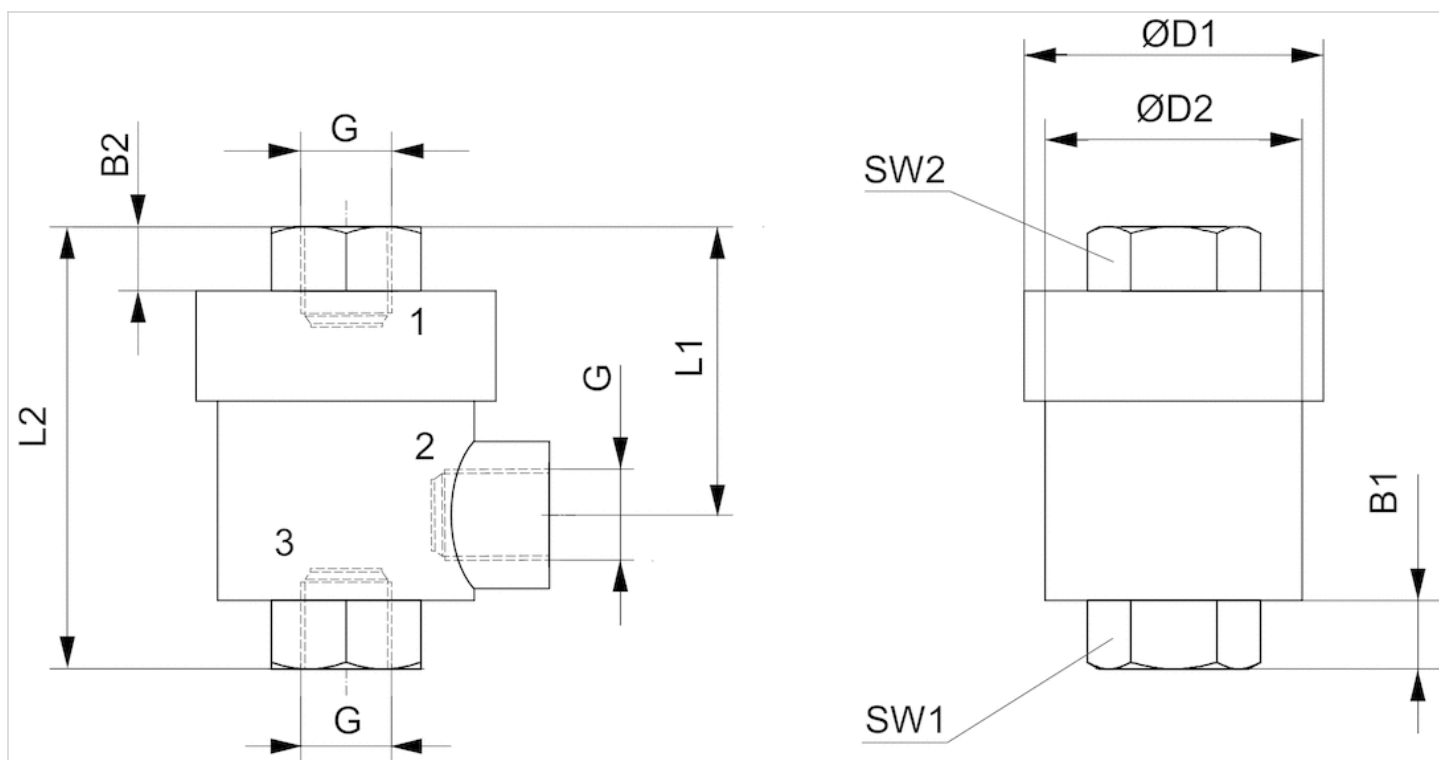
Nominal flow Q_n at 6 bar and $\Delta p = 1$ bar

Technical information

Material	
Housing	Brass, nickel-plated
Seals	Acrylonitrile butadiene rubber Polyurethane

Dimensions

Fig. 1



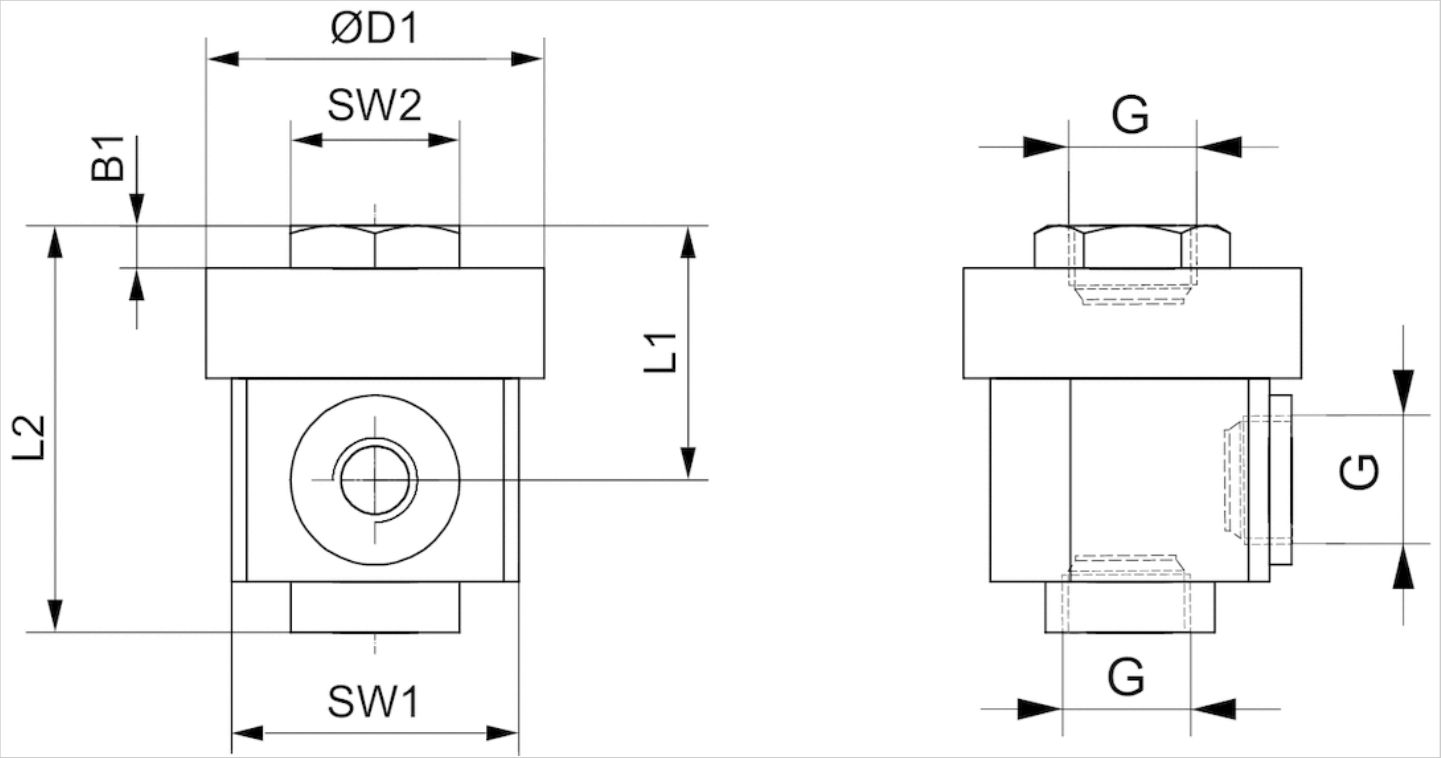
Dimensions

Part No.	Port G	B1	B2	ØD1	ØD2	L1	L2	SW1	SW2
5735040000	G 1/8	6.5	6.5	28	24	27	42	15	15
5735040100	G 1/4	9.5	9	33.5	29.5	35	53	19	19
R412010750	G 3/8	10	10	32.5	29.5	36	56	21	21
5735040300	G 1/2	13.5	13	43	40	43	72	26	26
R412010751	G 3/4	19	16	49	45.5	55	90	32	32

Part No.	Port G	B1	B2	ØD1	ØD2	L1	L2	SW1	SW2
R412010752	G 1	17	17	80	70	70	110	46	46

Dimensions

Fig. 2



Dimensions

Part No.	Port G	B1	ØD1	L1	L2	SW1	SW2
5735040900	M5	2.5	20	17	25	17	10