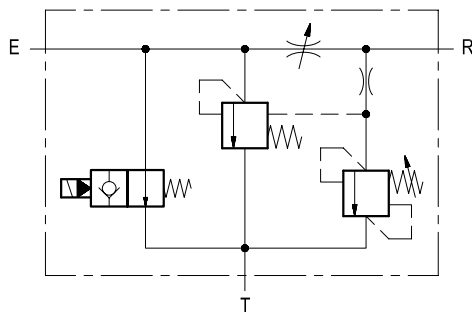


## Flow regulator, 3-way, pressure compensated, with relief and solenoid by-pass

VRFC3-VS-BPE

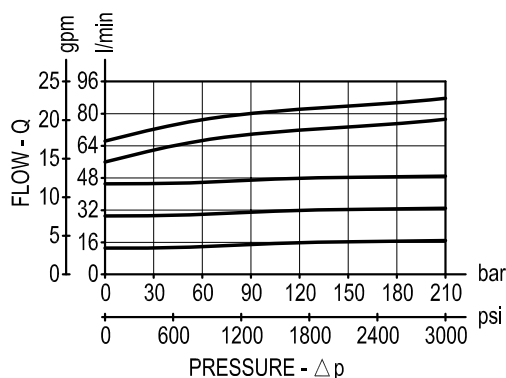
0M.38.03 - X - 04



### Description

A constant pressure compensated flow rate is established from E to R, while a minimum pressure differential of appr. 5 bar (70 psi) exists between the two ports. Input flow supplied to E in excess of the regulated output at R is by-passed to T. Regulated flow can be varied from closed to the nominal maximum rating of the valve and its pressure is controlled by a relief cartridge which will dump to Tank the output flow if the maximum pressure is reached. A normally open solenoid cartridge by-passes all Inlet flow to tank when de-energized. Reverse flow from R to E is limited by the selected opening of the restrictor and is not pressure compensated. Flow from T to R is not permitted.

### Performance



### Technical data

#### Hydraulic

Operating pressure	bar (psi)	up to 210 (3000)
Adj. relief valve: range	35-210 bar (500-3000 psi)	
Standard setting:	210 bar (3000 psi)	
QE = max inlet flow "E" port	150 l/min (40 gpm)	
QR = max regulated flow "R" port	90 l/min (24 gpm)	
Flow range adjustment	0 - 3 turns	
<b>The coil must be ordered separately</b>		

#### General

Manifold material	Aluminium	
Note: aluminium bodies are often strong enough for operating pressures exceeding 210 bar (3000 psi), depending from the fatigue life expected in the specific application. If in doubt, consult our Service Network.		
Weight	kg (lbs)	2.30 (5.1)
Viscosity	20 to 380 mm²/s (cSt)	
Fluid temperature range	°C (°F)	between -20 (-4) and +80 (176)
Other technical data	see data sheet RE 18350-50	

**Note:** for applications outside these parameters, please consult us.

