

DURAVALVE

ELECTRIC ACTUATORS



DURAVALVE ELECTRIC ACTUATORS

Features and Specifications



FEATURES

- **10 sizes**
- **Torque:** 100-5000 In-Lbs.
- **Enclosures:**
NEMA 4 Watertight Standard
NEMA 7 Explosion Proof Optional
- **Materials:**
Enclosure - Cast aluminum with a thermally bonded polyester powder coating.
Output Shaft - Stainless Steel
Fasteners - Stainless Steel

- **Voltages:**
115 VAC, 60 Hz, 1 PH. PSC — Standard
240 and 24 VAC — Optional
12 and 24 VDC — Optional
Thermal overload protection — Standard
Wired for light indication — Standard
- **Limit Switches:**
Two SPDT, Independently adjustable from 0 to 90 degrees
15A, 1/2 HP 125, 250 VAC 0.5A, 125 VDC
- **Terminal Strip Connection:** AWG 14
- **Lubrication:** Permanent
- **Installation:** Universal
- **Temperature Limits:**
-40 degrees F. to 150 Degrees F.
(Heater required at 0 degrees F. and below.)
- **CSA Certified:** Models through 3,840 In-Lbs.

OPTIONAL FEATURES

Voltages, heater-thermostat, additional limit switches, motor brake (required for butterfly valves), extended duty motors.

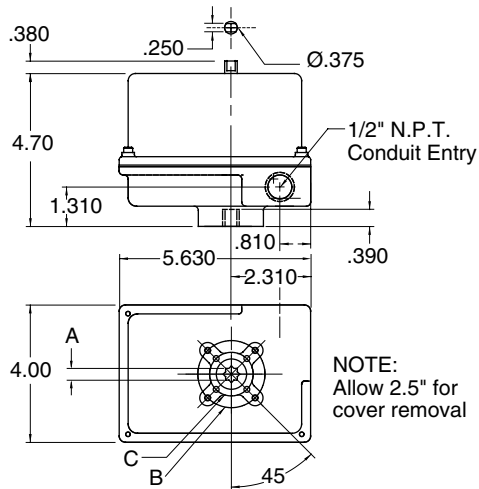
Note: Not All Options Available On All Models.

SPECIFICATIONS

Actuator Model	Output Torque (in-lb)	Duty Cycles	Standard Motor	90 Deg. Time Sec.	Locked Rotor Current/Amps	Manual Override	ISO-5211 Mtg. Pattern	Approximate Weight lbs.
DR-2A	100	75%	115 VAC, 60Hz, 1 Ph. PSC	2.5	.55	STD. (Except NEMA 7 & DC Motors)	F03/09	5
DR-2B	100	75%	115 VAC, 60Hz, 1 Ph. PSC	2.5	.55	STD. (Except NEMA 7 & DC Motors)	F04/11	5
DSR-5	200	25%	115 VAC, 60Hz, 1 Ph. PSC	5	.75	STD. (Except DC Motors)	F05/14	6
DSX-5	300	25%	115 VAC, 60Hz, 1 Ph. PSC	5	.99	STD. (Except DC Motors)	F05/14	6
DSH-10	400	25%	115 VAC, 60Hz, 1 Ph. PSC	10	.75	STD. NEMA 4 (Optional NEMA 7)	F07/17	13 (NEMA 7 16)
DMR-15	675	25%	115 VAC, 60Hz, 1 Ph. PSC	15	.75	STD. NEMA 4 (Optional NEMA 7)	F07/17	13 (NEMA 7 16)
DML-15	1000	25%	115 VAC, 60Hz, 1 Ph. PSC	15	1.1	STD. NEMA 4 (Optional NEMA 7)	F07/17	13 (NEMA 7 16)
DMH-30	1500	25%	115 VAC, 60Hz, 1 Ph. PSC	30	1.1	STD. NEMA 4 (Optional NEMA 7)	F07/17	13 (NEMA 7 16)
DLA-12	2000	100%	115 VAC, 60Hz, 1 Ph. PSC	12	1.5	STD.	SAE	30
DLX-14	3840	100%	115 VAC, 60Hz, 1 Ph. PSC	14	2.9	STD.	SAE	30
D5K-68	5000	100%	115 VAC, 60Hz, 1 Ph. PSC	68	2.9	STD.	SAE	100

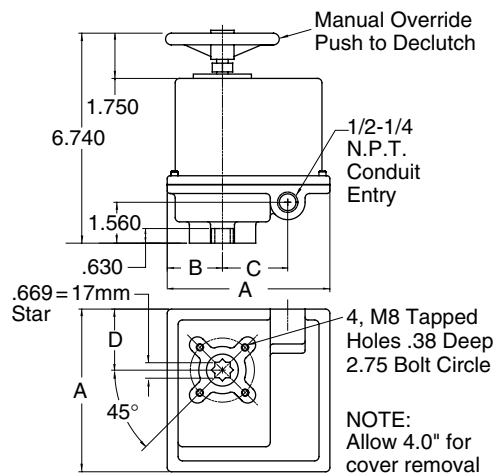
Dimensional Drawings

DR-2A & DR-2B



Model	ISO-5211 Mtg. Pattern.	A	B	C
DR-2A	F03	0.354 Star (9mm)	4, M5 TAP 0.44 DP. 1.968 B.C.	4, M5 TAP 0.44 DP. 1.417 B.C.
DR-2B	F04	0.433 Star (11mm)	4, M5 TAP 0.44 DP. 2.121 B.C.	4, M5 TAP 0.44 DP. 1.653 B.C.

DSH-10, DMR-15, DML-15 & DMH-30



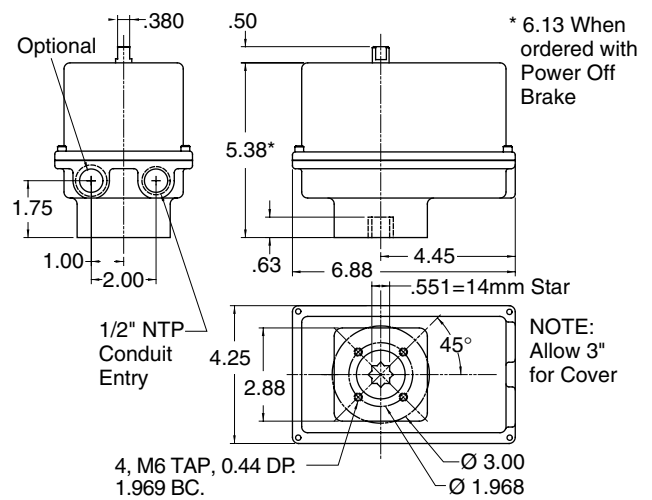
ISO-5211 - F07 Mounting Pattern

Enclosure	A	B	C	D
NEMA 4	7.0	2.30	2.81	2.63
NEMA 7	8.5	3.13	2.81	3.38

Note:
All dimensions in inches unless otherwise specified.

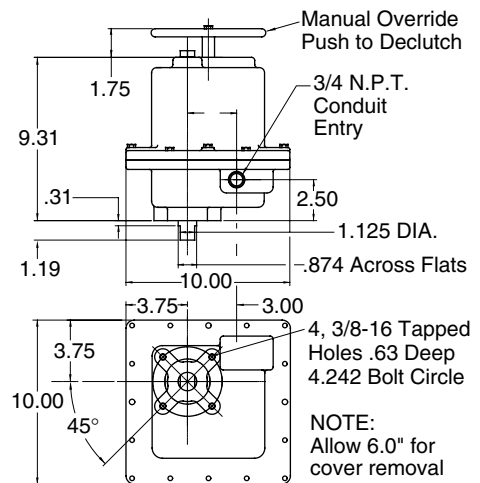


DSR-5 & DSX-5

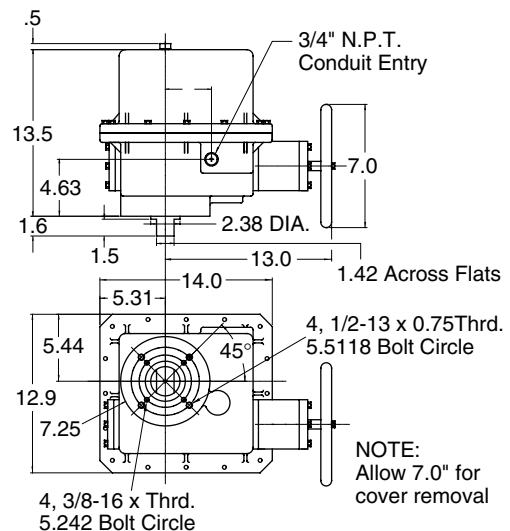


ISO-5211 - F05 Mounting Pattern

DLA-12 & DLX-14



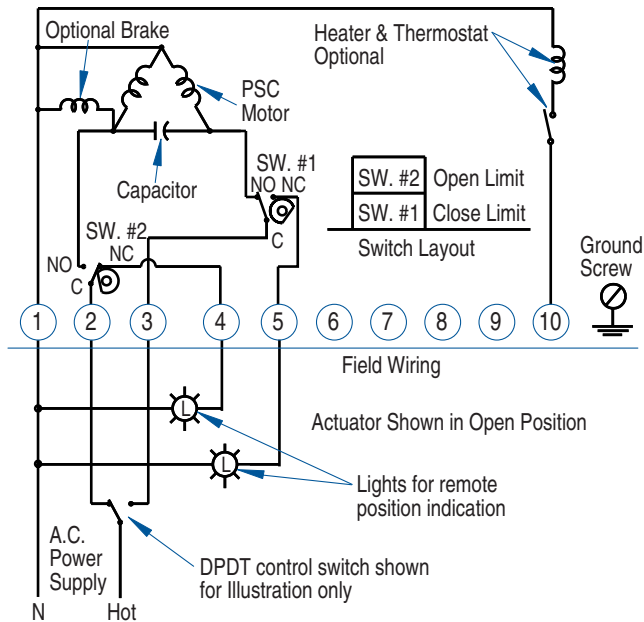
D5K-68



DURAVALVE ELECTRIC ACTUATORS

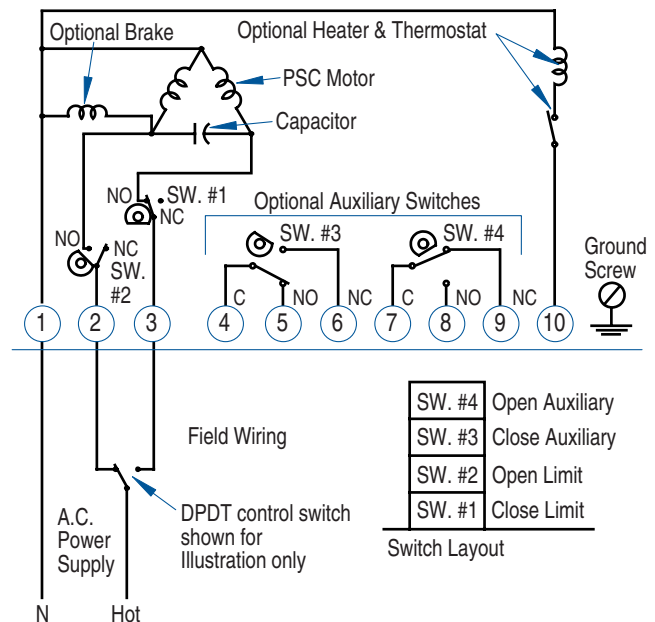
Wiring Diagrams

TYPICAL WIRING DIAGRAM



Notes:
Power to terminals 1 & 2 opens valve (CCW rotation).
Power to terminals 1 & 3 closes valve (CW rotation).
Terminals 4 & 5 for light indication.

TYPICAL WIRING DIAGRAM with TWO AUXILIARY SWITCHES



Notes:
Power to terminals 1 & 2 opens valve (CCW rotation).
Power to terminals 1 & 3 closes valve (CW rotation).
Terminals 4 through 9 for auxiliary switch connection.

Wiring diagram illustrates the actuator in the open position
actuators are shipped in the open position unless otherwise specified.

Ordering Information

When ordering please specify:

1. Model
2. Actuator Electrical Requirements
 - a) Voltage
 - b) Hertz
 - c) Phase
3. Enclosure Type
 - a) NEMA 4
 - b) NEMA 4X
 - c) NEMA 7
 - d) NEMA 4 & 7
4. Optional Equipment Required