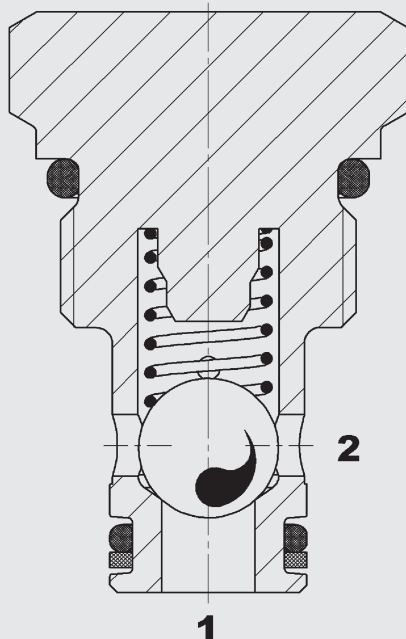


## FUNCTION



The check valve is a direct-acting, spring-loaded ball poppet valve. When there is no flow through the valve, the spring holds the ball in the closed position and therefore shuts off port 2 from port 1. The valve opens when the pressure at port 1 is higher than the pressure at port 2, including the pressure created by the spring force.

## Check Valve Ball Type, direct-acting UNF Cartridge – 350 bar RV08A-01

### FEATURES

- Main application is to prevent uncontrolled movement or creeping of loaded cylinders and also to shut-off sections of the system
- Excellent stability throughout the entire flow range
- Exposed surfaces zinc-nickel plated for increased corrosion protection (1.000 h Salt spray test)

### SPECIFICATIONS\*

Operating pressure:	max. 350 bar
Nominal flow:	max. 38 l/min
Internal leakage:	leak-free max. 5 drops/min (0,25 cm³/min) at 350 bar
Cracking pressure:	0.35 bar 1.00 bar 2.00 bar 5.00 bar
Ambient temperature range:	min. -30 °C to max. +100 °C
Media operating temperature range:	min. -30 °C to max. +100 °C
Operating fluid:	Hydraulic oil to DIN 51524 Part 1, 2 and 3
Viscosity range:	min. 7.4 mm²/s to max. 420 mm²/s
Filtration:	Class 21/19/16 according to ISO 4406 or cleaner
MTTF <sub>d</sub> :	150 - 1200 years, according to DIN EN ISO 13849-1
Installation:	No orientation restrictions
Materials:	Valve body: steel Ball: roller bearing steel Seals: NBR (standard) FKM (optional, media temperature range -20 °C to +120 °C) Back-up rings: PTFE
Cavity:	FC08-2
Weight:	0.06 kg

\*see "hints and conditions for valves" in brochure 53.000

10.3  
(0.406)

2  
(0.079)

28  
(1.102)

$\phi 12.7$   
( $\phi 0.5$ )

3/4-16 UNF-2A

\*Torque:  
Steel manifold  
(ultimate tensile strength < 360 N/mm<sup>2</sup>):  
45 Nm  
Aluminium manifold  
(ultimate tensile strength < 330 N/mm<sup>2</sup>):  
40 Nm  
(tool acc. to DIN EN ISO 6789,  
tool type II class A or B)  
For further informations see brochure  
No. 53.000  
"Conditions and instructions for valves"

19  
(0.75)

hex. SW 7/8"  
torque\*

60.7 max.  
(2.39 max.)

51.1 ± 1.6  
(2 ± 0.051)

38  
(1.496)

7.1  
(0.28)

15.2  
(0.6)

2

28.7 thick  
(1.13)

3.3  
(0.13)

41.1  
(1.62)

51.1 ± 1.6  
(2 ± 0.051)

1

millimeter (inch)  
subject to technical modification

[illegible]

Tool	Part No.
Countersink	175473
Reamer	175474