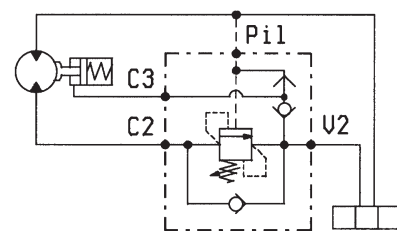
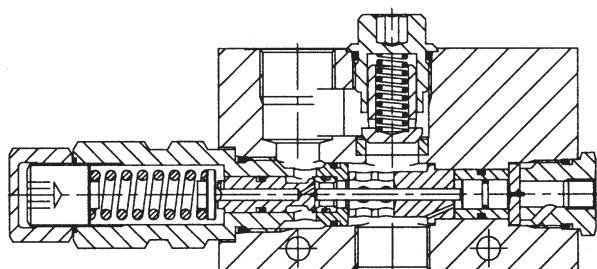
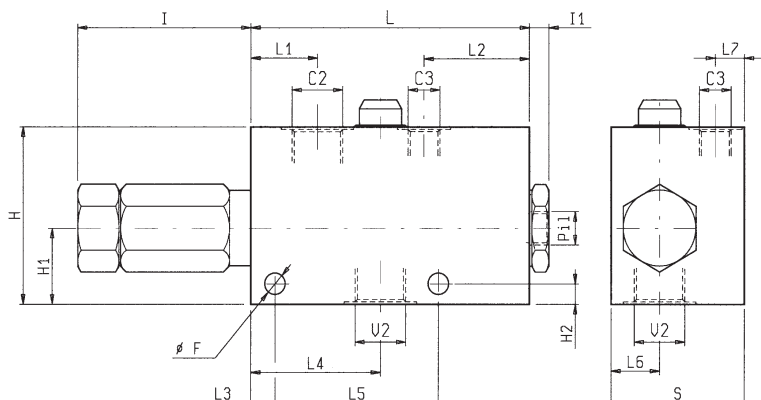




**BILANCIAMENTO, SEMPLICE EFFETTO, SERIE "NA",  
PER ARGANI**  
**PILOT ASSISTED, SERIES "NA", OVERCENTRE FOR WINCHES**

**VBSO-SE-NA-LA**

**05.41.81 - X - Y - Z**



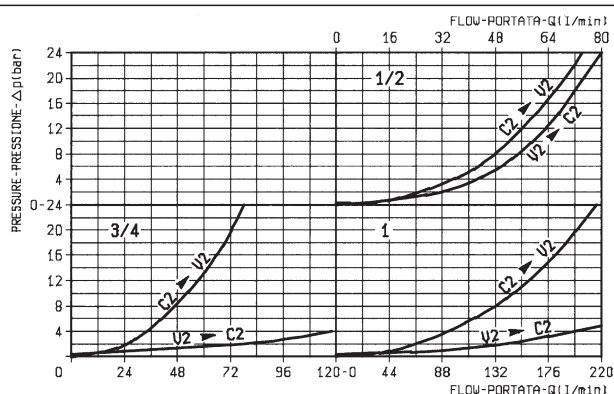
**DATI TECNICI / TECHNICAL DATA**

Pressione max. 350 bar  
Max. pressure

Portata max. vedi diagramma  
Flow see performance graph

Taratura della valvola: almeno 1.3 volte superiore  
alla pressione indotta dal carico  
Pressure setting: at least 1.3 times the load  
induced pressure

70	14	30	85	77	35	44	35	160	10	92.5	10	35	100	10.5			1	4
60	15	20	75	62.5	10	48.5	29	127.5	10	71.5	10	35	90	10.5			3/4	2.35
55	12	20	67.5	53.5	10	43.5	27.5	61	10	71.5	8	30	70	8.5			1/2	1.67
<b>S</b>	<b>L7</b>	<b>L6</b>	<b>L5</b>	<b>L4</b>	<b>L3</b>	<b>L2</b>	<b>L1</b>	<b>L</b>	<b>I1</b>	<b>I</b>	<b>H2</b>	<b>H1</b>	<b>H</b>	<b>F</b>			<b>Y</b>	<b>Peso kg Weight kg</b>



**X RAPPORTO DI PILOTAGGIO  
PILOT RATIO**

<b>03</b>	1/2 - 7.6 : 1 3/4 - 7.6 : 1 1 - 8 : 1
<b>10</b>	1/2 - 3 : 1 3/4 - 3 : 1 1 - 2.8 : 1

**MOLLE / SPRINGS**

<b>Z</b>	Campo taratura min - max bar Adj. press. range bar	Incremento press. bar / giro vite Press. increase bar / turn	Taratura standard bar (Q = 5 l/min) Std. setting bar (made at = 5 l/min)	Cod. ordinazione Ordering code	Colore Colour
1/2	20 60-210	68	200	03.51.01.152	verde green
3/4	35 100-350	105	350	03.51.01.142	giallo yellow
1	20 60-210	36	200	03.51.01.067	verde green
	35 100-350	62	350	03.51.01.057	giallo yellow

**Y ATTACCHI / PORT SIZE  
V2-C2 PIL-C3**

<b>03</b>	G 1/2	G 1/4
<b>04</b>	G 3/4	G 1/4
<b>05</b>	G 1	G 1/4