

## NOTICE

Because of their threaded connections, these ball valves are not suitable for use with GE screwed fittings. The thread depth of the threaded connections is in many cases not sufficient for this purpose. Furthermore, the required sealing surface for an EO seal is not provided.

## Stainless steel low pressure ball valves KHNVN / KHNVS

### Model code

(also order example)

**KHNVS** **Rp** **1/2** **3333** **18** **X** **SO760**

### Designation

KHNVN – low pressure ball valve – standard model  
KHNVS – low pressure ball valve – heavy duty model

### Type of connection

Rp  
G  
Notice: sealed via the thread.

### Thread size

### Materials

*Housing*  
3 = stainless steel (1.4408)

*Ball, control spindle*  
3 = stainless steel (1.4408)

*Ball seals*  
3 = PTFE

*Seals*  
3 = PTFE

### Handle

18 = stainless steel bolt-on handle, cranked, fitted

### Series

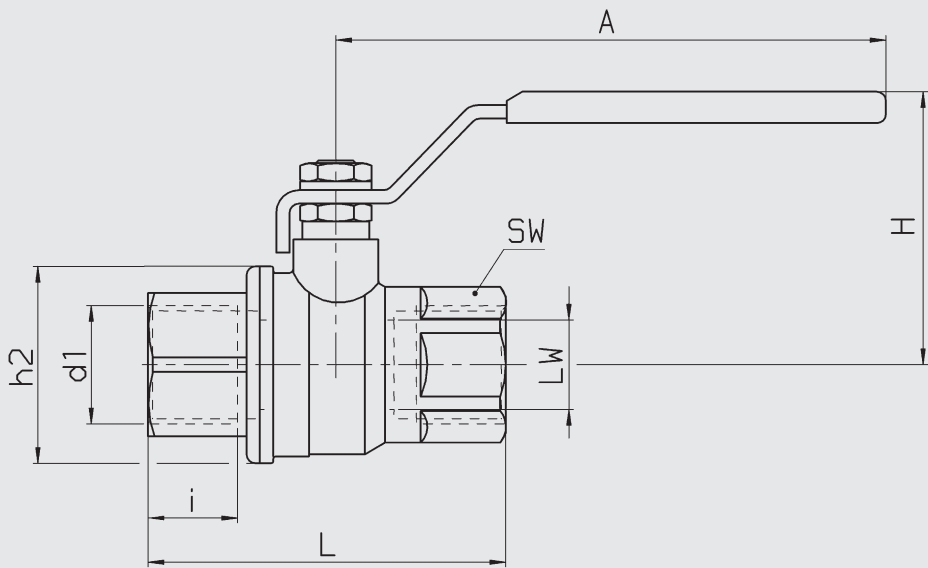
(determined by manufacturer)

### Option

SO760 = ball valve can be locked in open and closed position using padlock, padlock not supplied  
5211 = preparation for superstructures (DIN EN 5211)

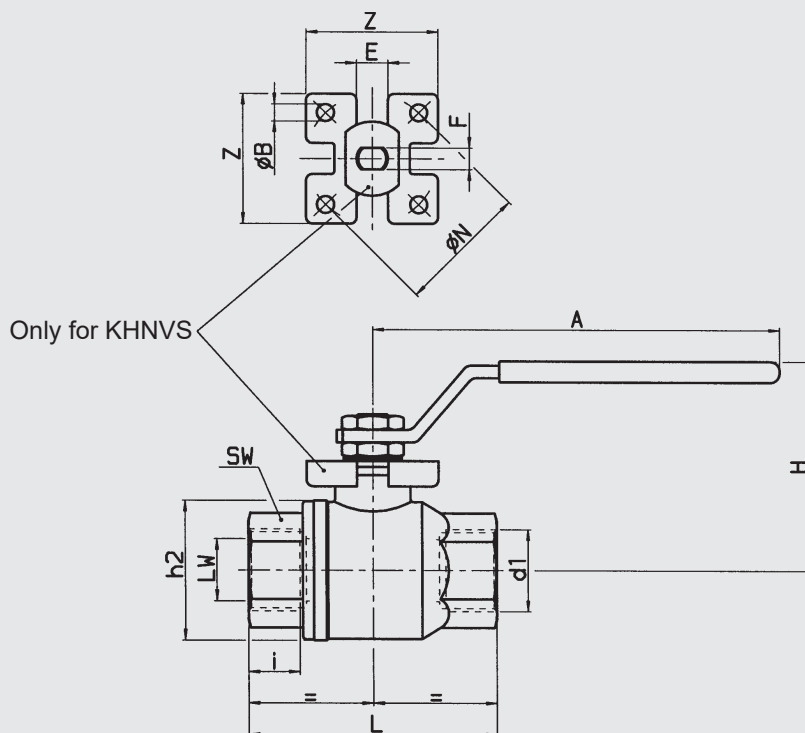
Dimensions

KHNVN



Type	d1	Nominal bore DN	ØLW [mm]	PN [bar]	i [mm]	L [mm]	H [mm]	h2 [mm]	A [mm]	SW [mm]	Weight [kg]
KHNVN	G1/4	6	9.2	63	10	50	49	26	83	19	0.27
KHNVN	G3/8	10	12.5	63	10.5	60	53	30	83	22	0.26
KHNVN	G1/2	15	15	63	13.5	75	60	35	103	26	0.32
KHNVN	G3/4	20	20	63	14.5	80	62	42	103	32	0.42
KHNVN	G1	25	25	50	17.5	90	77	48	151	38	0.67
KHNVN	G1 1/4	32	32	50	19	110	81	62	151	50	1.12
KHNVN	G1 1/2	40	38	40	19	120	91	72	194	54	1.73
KHNVN	G2	50	50	40	23.5	140	103	90	194	68	2.78

# KHNVS



Type	d1	Nominal bore DN	ØLW [mm]	PN [bar]	i [mm]	L [mm]	Øh2 [mm]	H [mm]	A [mm]	SW [mm]	Weight [kg]
KHNVS	Rp1/8	04	8	140	7.4	55.5	30	50	111	22	0.25
KHNVS	Rp1/4	06	10	140	11	55.5	30	50	111	22	0.24
KHNVS	Rp3/8	10	10	140	11.4	55.5	30	50	111	22	0.22
KHNVS	Rp1/2	16	15	140	15	66	36	53	111	27	0.30
KHNVS	Rp3/4	20	20	105	16.3	79	45	68	132	32	0.50
KHNVS	Rp1	25	25	105	19.1	93	54	77	175	41	0.95
KHNVS	Rp1 1/4	32	32	64	21.4	100	64	83	175	50	1.30
KHNVS	Rp1 1/2	40	40	64	21.4	110	80	100	250	55	2.10
KHNVS	Rp2	50	50	64	25.7	131	95	108	250	70	3.30
KHNVS	Rp2 1/2	65	65	25	30.2	159	122	126	321	90	6.81
KHNVS	Rp3	80	80	25	33.3	185	144	137	321	105	10.20
KHNVS	Rp4	100	100	25	39.3	222	177	156	381	130	17.40

Type	d1	ØB	F	E	ØN	Z
KHNVS	Rp1/8	5.5	5	8	36F03	36
KHNVS	Rp1/4	5.5	5	8	36F03	36
KHNVS	Rp3/8	5.5	5	8	36F03	36
KHNVS	Rp1/2	5.5	5	8	36F03	36
KHNVS	Rp3/4	5.5	7	10	42F04	42
KHNVS	Rp1	5.5	8	12	42F04	42
KHNVS	Rp1 1/4	5.5	8	12	42F04	42
KHNVS	Rp1 1/2	6.5	10	16	50F05	50
KHNVS	Rp2	6.5	10	16	50F05	50
KHNVS	Rp2 1/2	M8	14	20	70F07	64
KHNVS	Rp3	M8	14	20	70F07	64
KHNVS	Rp4	M10	18	24	102F10	92

Technical specifications

Type of connection:	Whitworth female thread to ISO 228 (G) Whitworth female thread to DIN 2999 (Rp)
Mounting position:	No orientation restrictions
Ambient temperature:	-20 °C to +160 °C
Nominal pressure:	up to PN 140
Operating media:	Mineral oil to DIN 51524 part 1 + 2, gaseous media, compressed air, water other media on request
Temperature of operating media:	-20 °C to +160 °C
Accessories:	All ball valves can be supplied with the following options on request: - Actuator - Limit controls - Lock

NOTE

The information in this brochure relates to the operating conditions and applications described. For applications and operating conditions not described, please contact the relevant technical department.

The operator is always responsible for determining the product suitability for the specific application. Quantified values for product characteristics are average values for a new product that undergo a time deterioration process.

Subject to technical modifications and errors.