

## VALVES IN PHASE OUT

Valves replaced by new VEI-16 (RE18323-39)

Solenoid operated valves pilot operated poppet type  
2-way normally closed  
Common cavity, Size 12

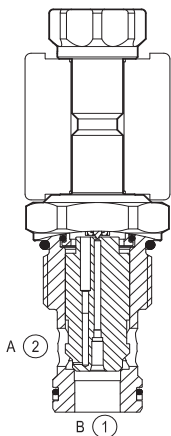
VEI-8A-12A-NC

OD.15 - X - 89 - Y - Z

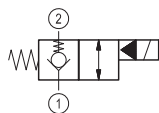
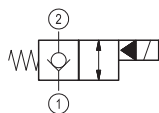
**RE 18323-13**

Edition: 11.2018

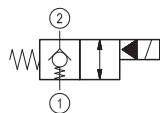
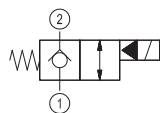
Replaces: 01.2016



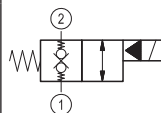
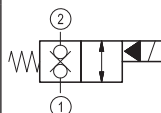
### ▼ Version 1



### ▼ Version 2



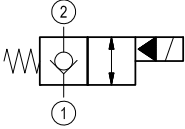
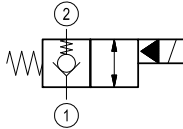
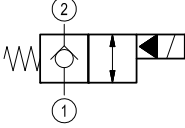
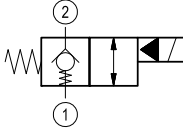
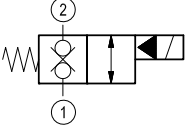
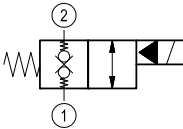
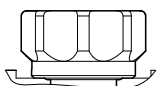
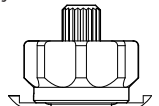
### ▼ Version 3



## Technical data

General		
Weight		0.22 kg (0.48 lbs)
Installation orientation		Optional
Ambient temperature range		-30 to 60 °C (-22 to 140 °F)
Hydraulic		
Max. operating pressure		350 bar (5000 psi)
Flow range		5 - 150 l/min (1 - 40 gpm)
Max. internal leakage		20 drops/min.
Fluid temperature range		-20 to 80 °C (-4 to 176 °F)
Fluids: Mineral-based or synthetics with lubricating properties at viscosities of 20 to 380 mm <sup>2</sup> /s (cSt)		
Installation torque		54 -66 Nm (40 - 49 ft-lbs)
Recommended degree of fluid contamination		Nominal value max. 10 µm (NAS 8) ISO 4406 19/17/14
Cavity		CA-12A-2N see 18325-70
Lines bodies and standard assemblies		Please refer to section "Hydraulic integrated circuit" or consult factory
Seal kit – version 1	code	RG12A2010520100
	material no.	R901111377
Seal kit – version 2-3	code	RG12A2010530100
	material no.	R930003374
Seal kit coil	code	RG12A1PNBR7010
	material no.	R934003958
Other technical data		See data sheet 18350-50
Electrical		
Type of voltage		DC voltage
Coil type		S8-356 see 18325-90
Supply voltage		See data sheet 18325-90
Nominal voltage		± 10%
Power consumption		20 W
Duty cycle coil		See characteristic curves %
Type of protection		See data sheet 18325-90
Note: Coils must be ordered separately		

**Ordering code**

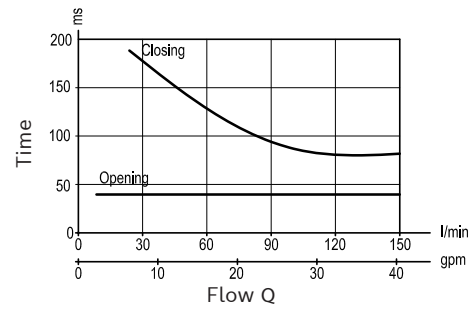
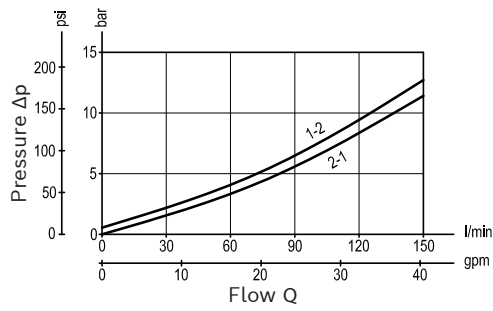
OD.15	X	89	Y	Z
Solenoid operated valves pilot operated poppet type 2-way normally closed				
<b>S0</b> = Tube not welded				
<b>S8</b> = Tube not welded with extra spring				
bidirectional type 	<b>05</b>			 for X= 05
bidirectional type 	<b>03</b>			 for X= 03
double lock 	<b>31</b>			 for X= 31
standard type <b>3A</b> 				
knob style manual override <b>3D</b> 				
<b>89</b> Common cavity: CA-12A-2N				

Type	Material number
OD1503893AS000	R901091116
OD1503893AS800	R901109961
OD1503893DS000	R901091117
OD1503893DS800	R901109962
OD1505893AS000	R901091127
OD1505893AS800	R901091128
OD1505893DS000	R901091129
OD1505893DS800	R901109978

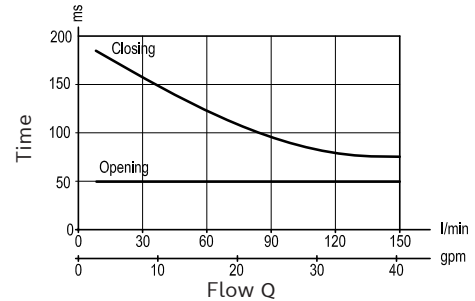
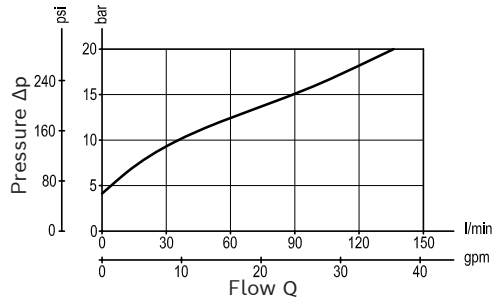
Type	Material number
OD1531893AS000	R901091168
OD1531893AS800	R901091169
OD1531893DS000	R901091170
OD1531893DS800	R901109990

**Characteristic curves****Version 1 – Version 2**

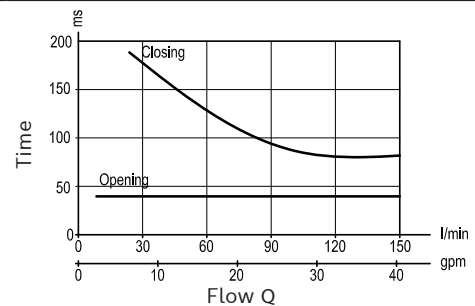
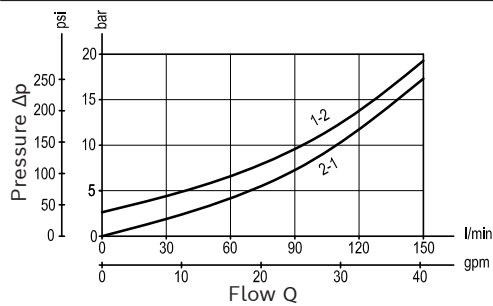
Standard



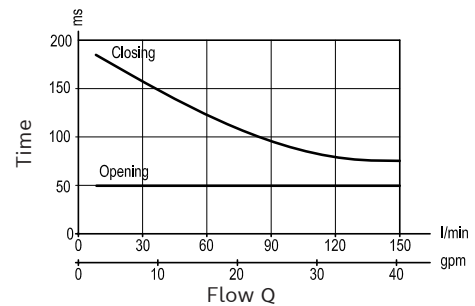
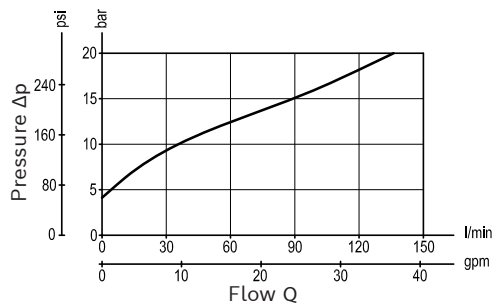
Extra spring

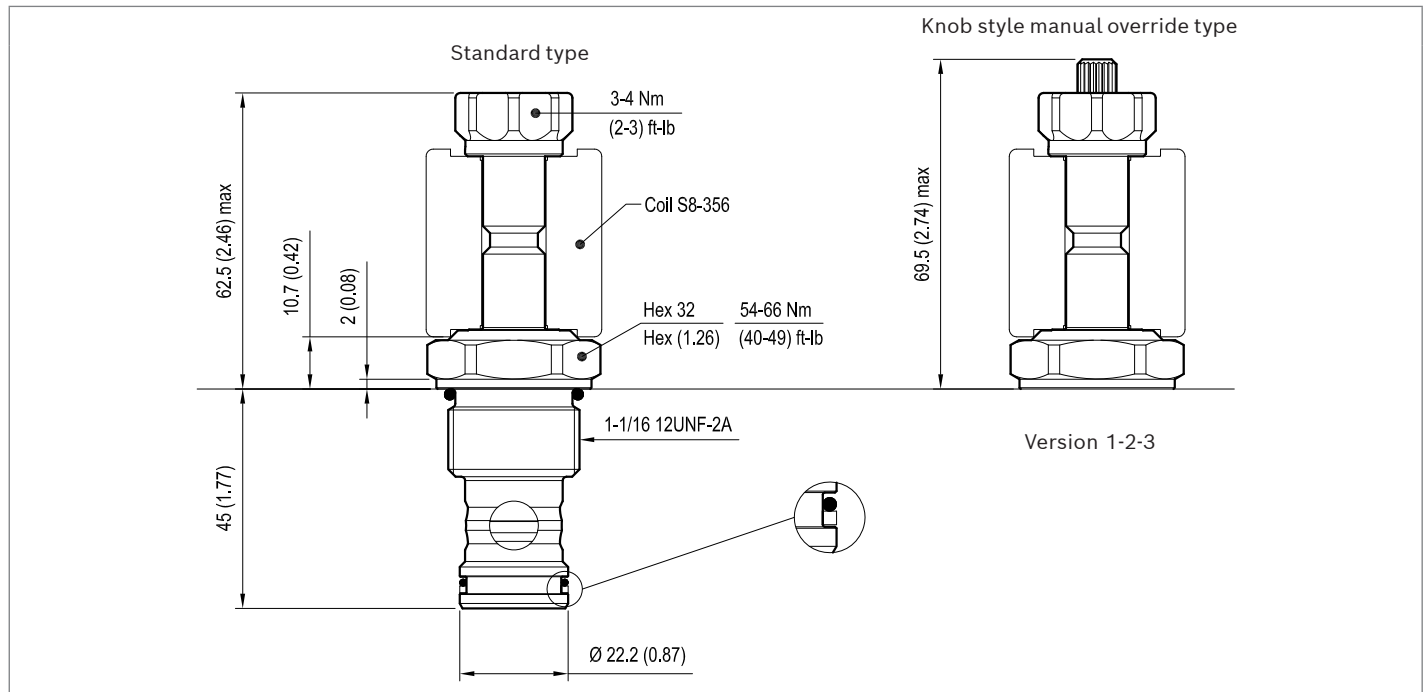
**Version 3**

Standard



Extra spring



**Dimensions**▼ **Version 1: Solenoid operated valve, poppet 2-way normally closed**▼ **Version 2: Solenoid operated valve, poppet 2-way normally closed**▼ **Version 3: Solenoid operated valve, poppet 2-way double lock normally closed**