

## VALVES IN PHASE OUT

Valves replaced by new VEI-16 (RE18324-08)

Solenoid operated valves direct acting  
spool 3-way 2-position  
Common cavity, Size 08

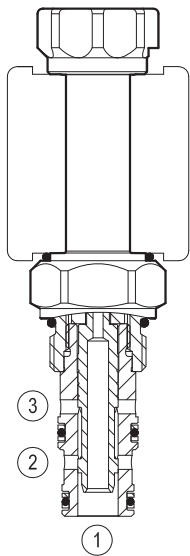
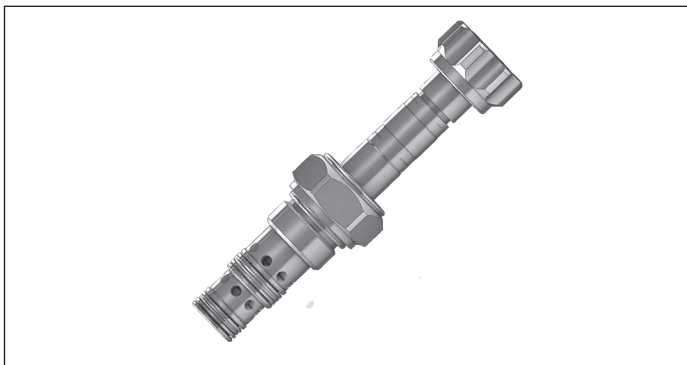
VED-8I-32

OD.13 - X - 51 - Y - Z

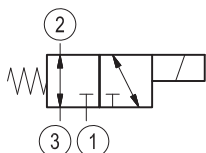
**RE 18324-61**

Edition: 03.2016

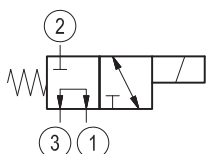
Replaces: 01.2006



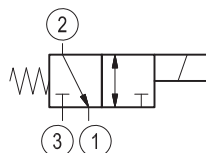
### ▼ Version 10



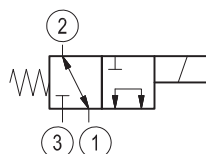
### ▼ Version 20



### ▼ Version 11



### ▼ Version 30



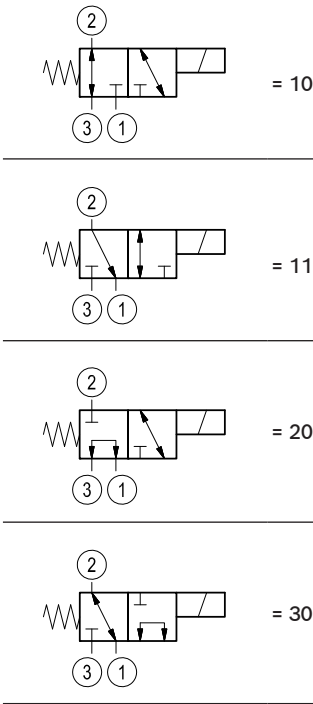
## Technical data

General		
Weight		0.14 kg (0.31 lbs)
Installation orientation		Any
Ambient temperature range -30 to 60 °C (-22 to 140 °F) - coil 20W		
Hydraulic		
Max. operating pressure		210 bar (3045 psi)
Max. flow		10 l/min. (3 gpm)
Max. internal leakage		40 cm <sup>3</sup> /min. (2.4 cu.in./min.)
Fluid temperature range		-20 to 80 °C (-4 to 176 °F)
Fluids: Mineral-based or synthetics with lubricating properties at viscosities of 20 to 380 mm <sup>2</sup> /s (cSt)		
Installation torque		39 - 51 Nm (29 - 38 ft-lbs)
Filtration		Nominal value max. 10 µm (NAS 8) ISO 4406 19/17/14
Cavity		CA-08A-3N
Seal kit	code	RG08A3010530100
	material no.	R901101723
Seal kit coil	code	RG12I1PNBR7010
	material no.	R934003957
Other technical data		See data sheet 18350-50
Electrical		
Type of voltage		DC voltage
Coil type		S8-356
Supply voltage		See data sheet 18325-90
Power consumption		See data sheet 18325-90
Duty cycle coil		See data sheet 18325-90
Type of protection		See data sheet 18325-90
Note: Coils must be ordered separately		

Ordering code

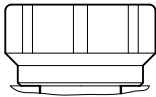
OD.13	*	51	*	00	00
-------	---	----	---	----	----

Solenoid operated valves direct acting  
spool 3-way 2-position

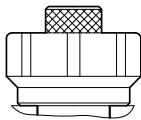


Common cavity: CA-08A-3N

30 = Standard type



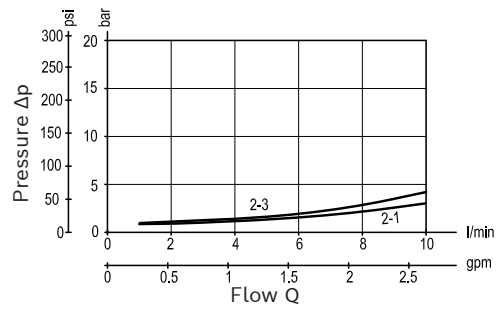
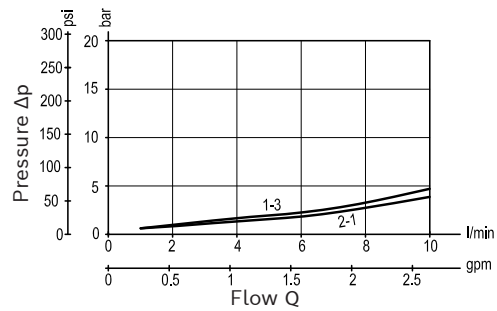
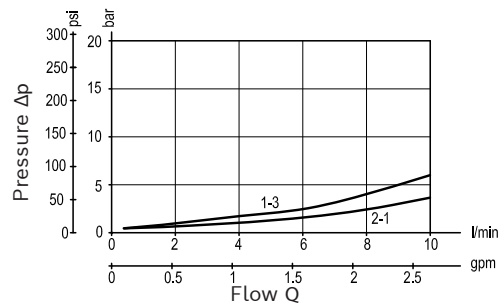
40 = knob style manual override



Preferred types

Type	Material number
OD131051300000	R901126871
OD131051400000	R901126872
OD131151300000	R901126873
OD131151400000	R901126875
OD132051300000	R901126892
OD132051400000	R901126895
OD133051300000	R901098192
OD133051400000	R901126897

Type	Material number

**Characteristic curves****Version 10 - 11****Version 20****Version 30**

**Dimensions**

▼ **Solenoid operated valves direct acting spool 3-way 2-position**

