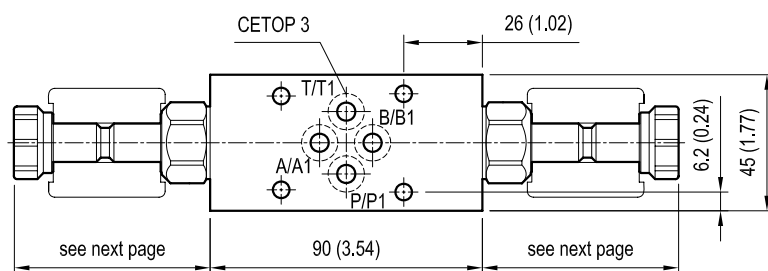
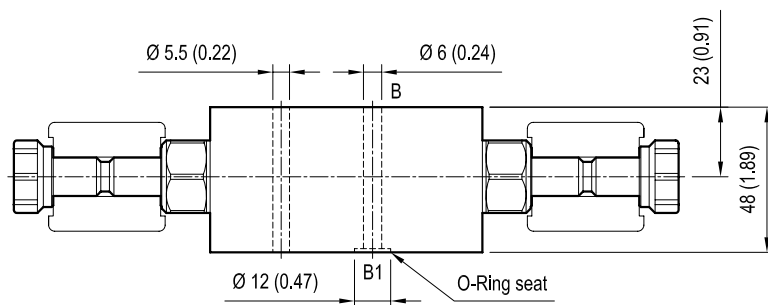


Sandwich valves, module with solenoid valve

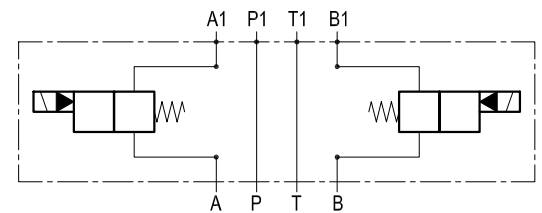
EM-VEI8A/8I-CETOP 3-A/B

OP . 15 - K - 18 - 29 - Y

Dimensions



[mm (inches)]



Cartridge schemes

monodirectional type	bidirectional type

Technical data

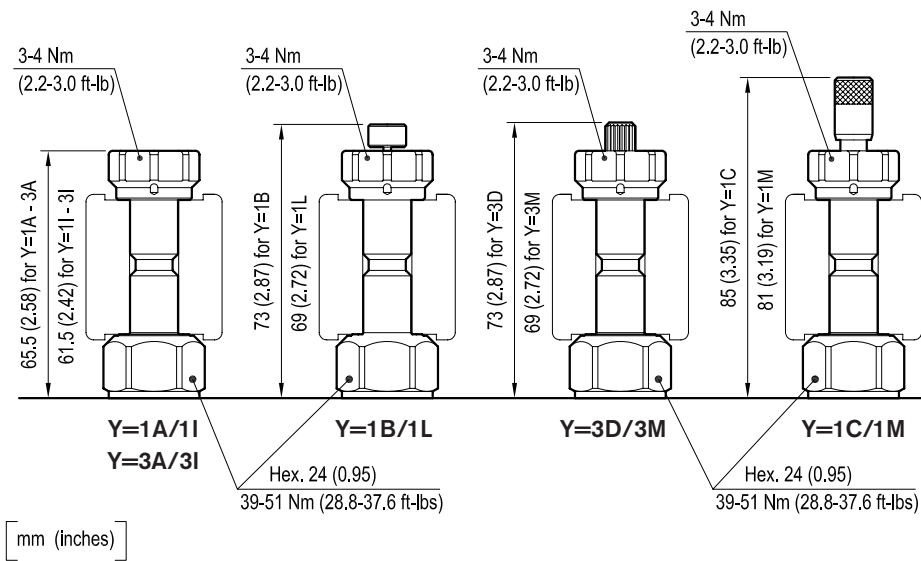
Max flow: up to 40 l/min (11 gpm)

Max operating pressure: 210 bar (3000 psi)

Standard manifolds in high strength **aluminium**.

For working pressure up to 350 bar (5000 psi) and for fatigue applications with any working pressure, steel manifolds are available upon request.

Dimensions



CARTRIDGE TECHNICAL DATA

Common cavity: **CA-08A-2N**

Filtration: 25 µm nominal or better

Minimum voltage required: 90% of nominal value

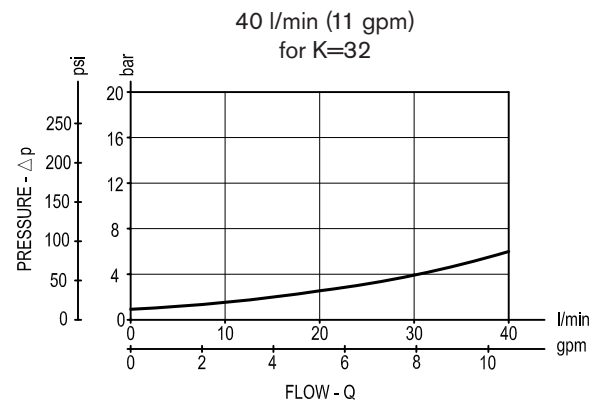
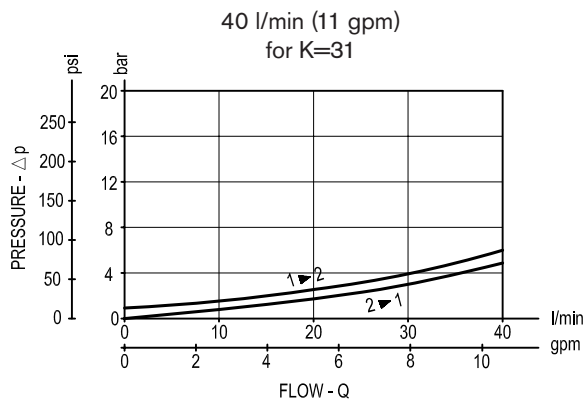
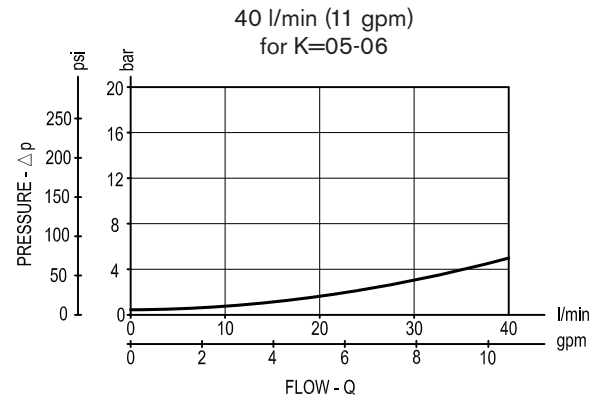
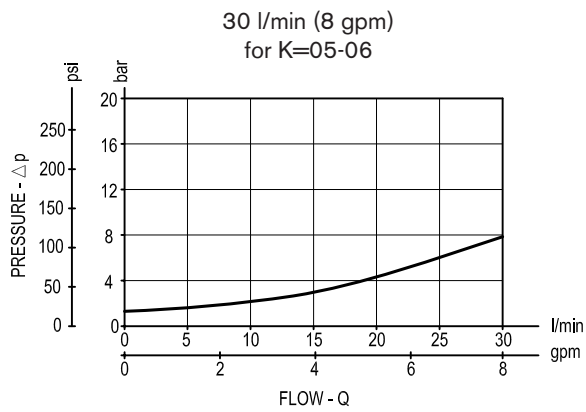
Coil : S8-356 **must be ordered separately** (see data sheets RE 18325-90)

Mounting position: unrestricted

For other details see cartridge data sheet

[illegible]

Performance graphs



Ordering code

OP15		K	18	29	Y
Sandwich valves module with solenoid valve					
Cartridge scheme (see page 1 and 2)			Rated flow (see table on page 2)		
= 05					
= 06					
= 31			Bidirectional		
= 32					
Common cavity Size 08			Flange CETOP 3 (DOT3)		

Preferred types (readily available)

Type	Material number	Type	Material number
OP150518293A00	R934002694		
OP150518293D00	R934003310		
OP150618291A00	R934002695		
OP153118293A00	R934002696		
OP153118293D00	R934003311		
OP153218291A00	R934002697		
OP153218291B00	R934002698		

Further types available by request