

# Counterbalance, vented guided poppet type

## Common cavity, Size 08

**RE 18320-11**

Edition: 03.2016

Replaces: 01.2010

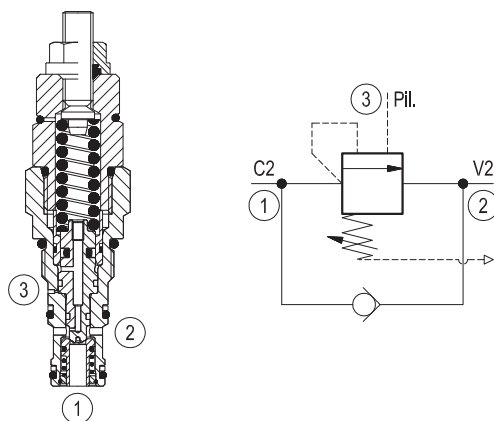
VBST-08AA

04.59.08 - X - 56 - Z



### Description

When pressure at 2 rises above the spring bias pressure, the check seat is pushed away from the piston and flow is allowed from 2 to 1. When load pressure at 1 rises above the pressure setting, the direct-acting, relief function is activated and flow is relieved from 1 to 2. With pilot pressure at 3, the pressure setting is reduced in proportion to the stated ratio of the valve, until fully open with free-flow from 1 to 2. The spring chamber is vented to atmosphere allowing operation of all functions independent of back-pressure at 2.



### Technical data

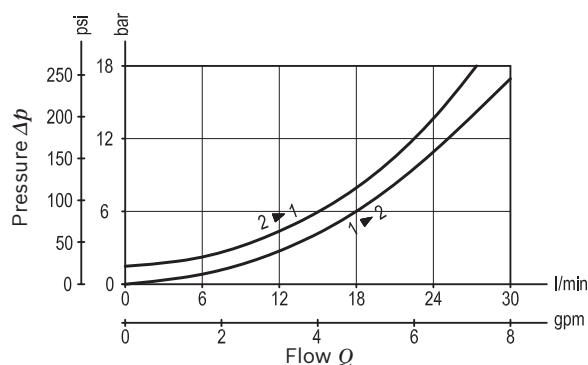
|   |  |
|---|--|
| Max. operating pressure                   | 350 bar (5000 psi)   |
| Max. flow                                 | 30 l/min (8 gpm)   |
| Max. internal leakage <sup>1)</sup>       | 15 drops/min.  |
| Fluid temperature range                   | -30 to 100 °C (-22 to 212 °F)  |
| Installation torque                       | 34 - 41 Nm (25 - 30 ft-lbs)  |
| Weight                                    | 0.19 kg (0.42 lbs)   |
| Cavity                                    | CA-08A-3C (see data sheet 18325-70)  |
| Lines bodies and standard assemblies      | Please refer to section "Hydraulic integrated circuit" or consult factory                                    |
| Seal kit <sup>2)</sup>                    | Code: RG08A9010520100<br>material no: R901101592   |
| Fluids                                    | Mineral-based or synthetics with lubricating properties at viscosities of 10 to 500 mm <sup>2</sup> /s (cSt) |
| Recommended degree of fluid contamination | Nominal value max. 10µm (NAS 8) / ISO 4406 19/17/14  |
| Installation position                     | No restrictions  |
| Other Technical Data                      | See data sheet 18350-50  |

Pressure setting: at least 1.3 times the load induced pressure.

1) At 70% of pressure setting

2) Only external seals for 10 valves

### Characteristic curve



Ordering code

|          |   |    |   |    |   |
|----------|---|----|---|----|---|
| 04.59.08 | X | 56 | Z | 00 | * |
|----------|---|----|---|----|---|

Counterbalance, vented guided  
poppet type

Pilot ratio

03 4:1

56 Common cavity, Size 08

Series O/A to L  
unchanged performances and dimensions

Version and options standard

| SPRINGS |                                |  |  |
|---------|--------------------------------|--|--|
|         | Adj. press. range<br>bar (psi) | Pressure increase<br>bar/turn (psi/turn) | Std. setting<br>bar (psi)<br>Q=5 l/min |
| 20      | 100-210 (1450-3000)            | 109 (1581)                               | 200 (2900)                             |
| 35      | 200-350 (2900-5000)            | 137 (1987)                               | 350 (5000)                             |

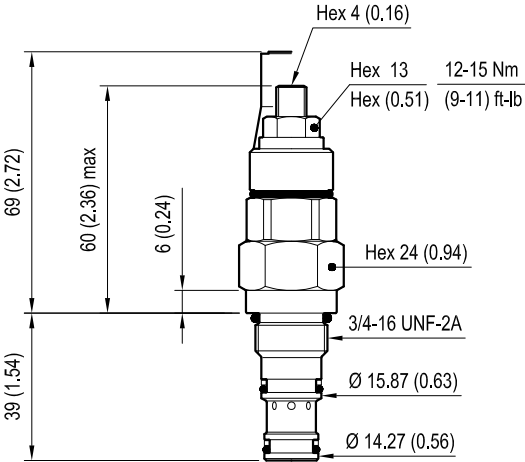
Note: Special settings available. Contact factory authorized  
representative for ordering code.

Preferred types

| Type            | Material number |
|-----------------|-----------------|
| 04590803562000B | R901096065      |
| 04590803563500B | R901096066      |

| Type | Material number |
|------|-----------------|
|      |                 |
|      |                 |

Dimensions



OPTION  
Tamper resistant cap  
ordering code: 11.04.23.002  
Mat. no. R930000752